

# 96" DUNKIRK

## BARN DOOR HARDWARE KIT

SKU: 950676



### FEATURES

- For doors up to 48" wide.
- Wheel: 2-3/4" diameter.
- Steel 1-1/4" diameter roller bearings.
- Track Size: 1/4" Steel, 1-1/2" x 96" (2).
- Strap Size: 1/4" Steel, 11-3/4" x 1-1/2".
- Optional Soft Close Adapter:
  - For use with flat rails.
  - Steel construction for long lasting durability.
  - Keeps door from slamming when opening and closing.
  - Installs concealed behind the rail.
  - Soft close kit includes:
    - Low profile soft close adapter left hand (1).
    - Low profile soft close adapter right hand (1).
    - Low profile soft close trigger (2).
    - Trigger screws (6).
    - Cone-point set screws (8).
    - Allen wrench for set screws (1).
    - Width: 12-11/16".
    - Depth: 1-1/4".
    - Height: 1-1/8".

### CONTENTS

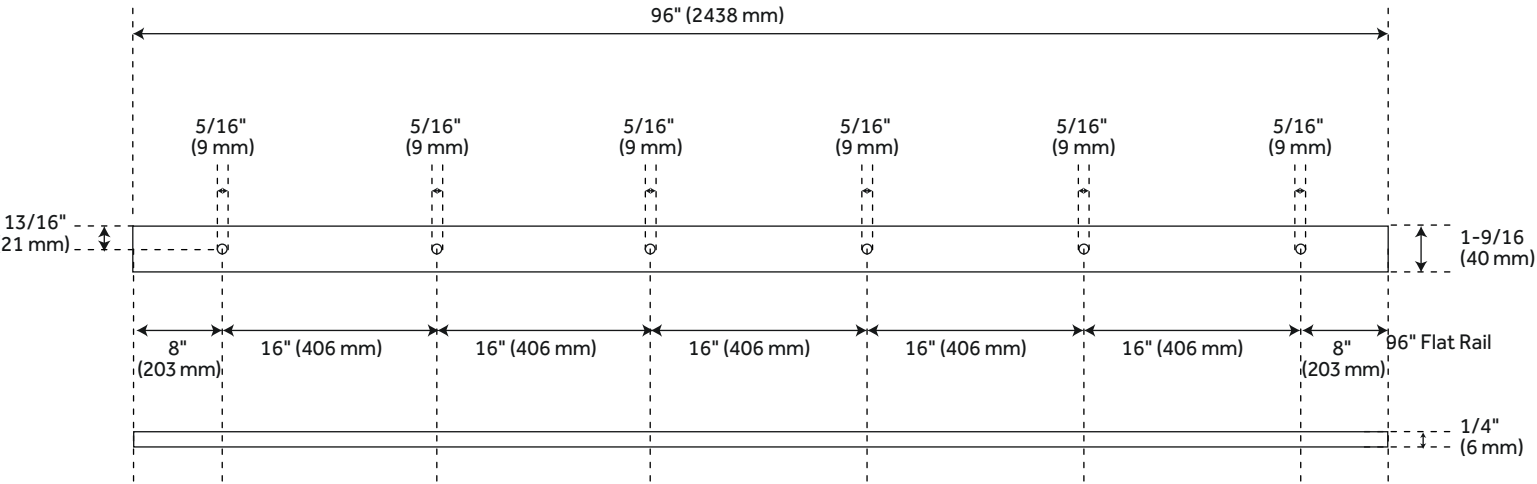
FLAT RAIL	.....	PAGE 2
STANDARD WHEEL	.....	PAGE 3
STRAIGHT STRAP HANGER	.....	PAGE 3
MORTISE FLOOR GUIDE	.....	PAGE 3
NON-MORTISE FLOOR GUIDE	.....	PAGE 3
TRACK LAG BOLT	.....	PAGE 4
FLAT RAIL SPACER	.....	PAGE 4
FLAT RAIL STOP	.....	PAGE 4
ANTI JUMP DISK	.....	PAGE 4

REVISED 10/09/2020

# 96" DUNKIRK

## BARN DOOR HARDWARE KIT

SKU: 950676



### FEATURES

- Material: Steel
- Length: 96"
- Height: 11-3/4"
- Depth: 2-1/8"
- Mounting Hardware Included: Yes
- Mounting Hardware Concealed: No
- Weight Limit (Lbs): 220

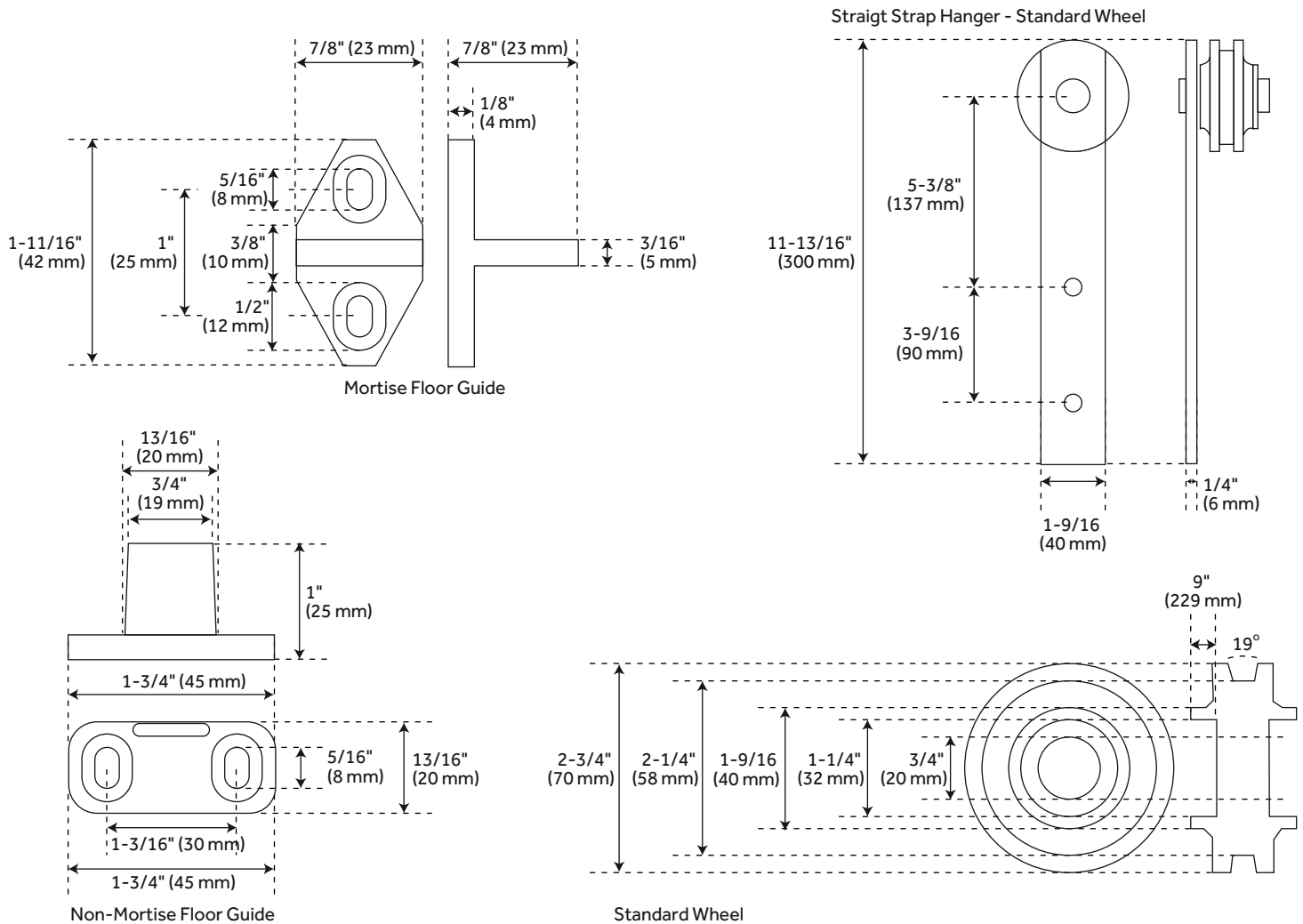
### PRODUCT IMAGE



# 96" DUNKIRK

## BARN DOOR HARDWARE KIT

SKU: 950676



### FEATURES

Material: Steel  
Length: 96"  
Height:  $11\frac{3}{4}"$   
Depth:  $2\frac{1}{8}"$   
Mounting Hardware Included: Yes  
Mounting Hardware Concealed: No  
Weight Limit (Lbs): 220

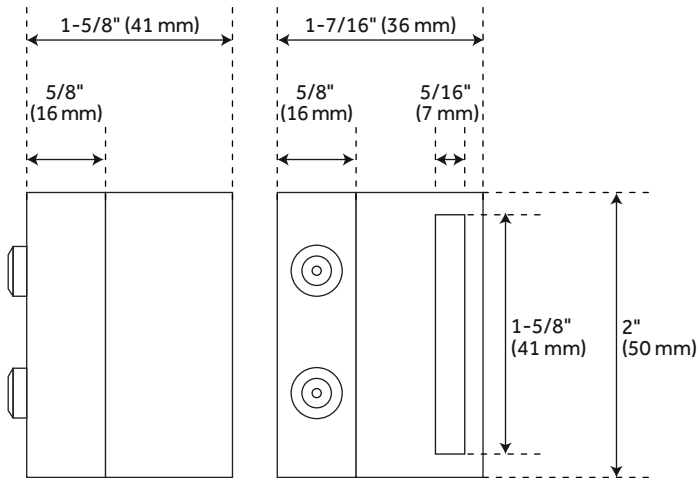
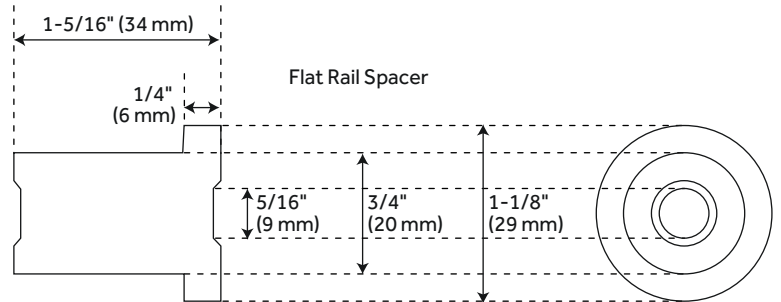
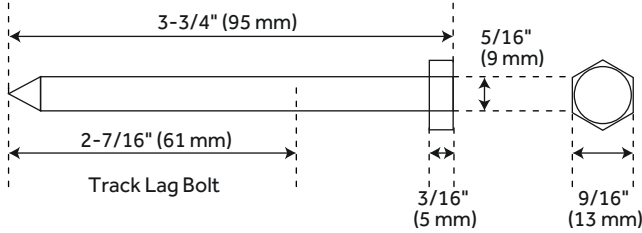
### PRODUCT IMAGE



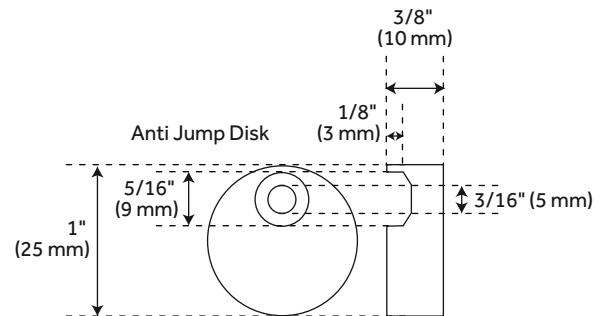
# 96" DUNKIRK

## BARN DOOR HARDWARE KIT

SKU: 950676



Flat Rail Stop Standard



### FEATURES

- Material: Steel
- Length: 96"
- Height: 11-3/4"
- Depth: 2-1/8"
- Mounting Hardware Included: Yes
- Mounting Hardware Concealed: No
- Weight Limit (Lbs): 220

### PRODUCT IMAGE

