

# 96" KARL

## TOP-MOUNT BARN DOOR HARDWARE KIT

SKU: 950680



### FEATURES

- For doors up to 48" wide.
- Roller Wheel: 3-1/4" diameter.
- Steel 2-1/2" diameter roller bearings.
- Track Size: 1/4" Steel, 1-1/2" x 96".
- Strap Size: 1/4" Steel, 10" X 1".
- Optional Soft Close Adapter:
  - For use with flat rails.
  - Steel construction for long lasting durability.
  - Keeps door from slamming when opening and closing.
  - Installs concealed behind the rail.
- Soft close kit includes:
  - Low profile soft close adapter left hand (1).
  - Low profile soft close adapter right hand (1).
  - Low profile soft close trigger (2).
  - Trigger screws (6).
  - Cone-point set screws (8).
  - Allen wrench for set screws (1).
  - Width: 12-11/16".
  - Depth: 1-1/4".
  - Height: 1-1/8".

### CONTENTS

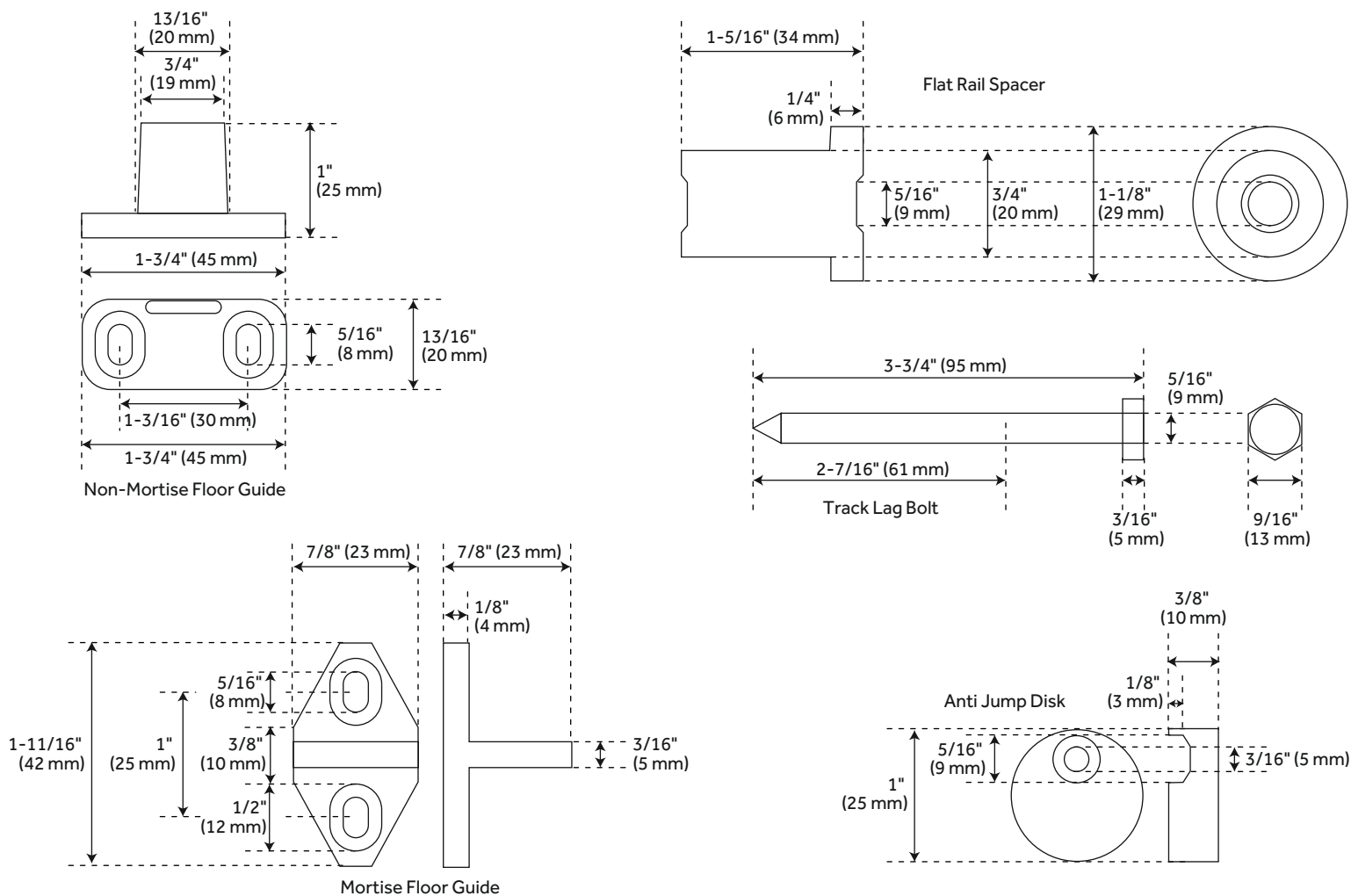
NON-MORTISE FLOOR GUIDE .....	PAGE 2
MORTISE FLOOR GUIDE .....	PAGE 2
FLAT RAIL SPACER .....	PAGE 2
TRACK LAG BOLT .....	PAGE 2
ANTI-JUMP BOLT .....	PAGE 2
FLAT RAIL .....	PAGE 3
BEARING WHEEL HANGER.....	PAGE 3
FLAT RAIL STOP .....	PAGE 3

REVISED 10/09/2020

# 96" KARL

## TOP-MOUNT BARN DOOR HARDWARE KIT

SKU: 950680



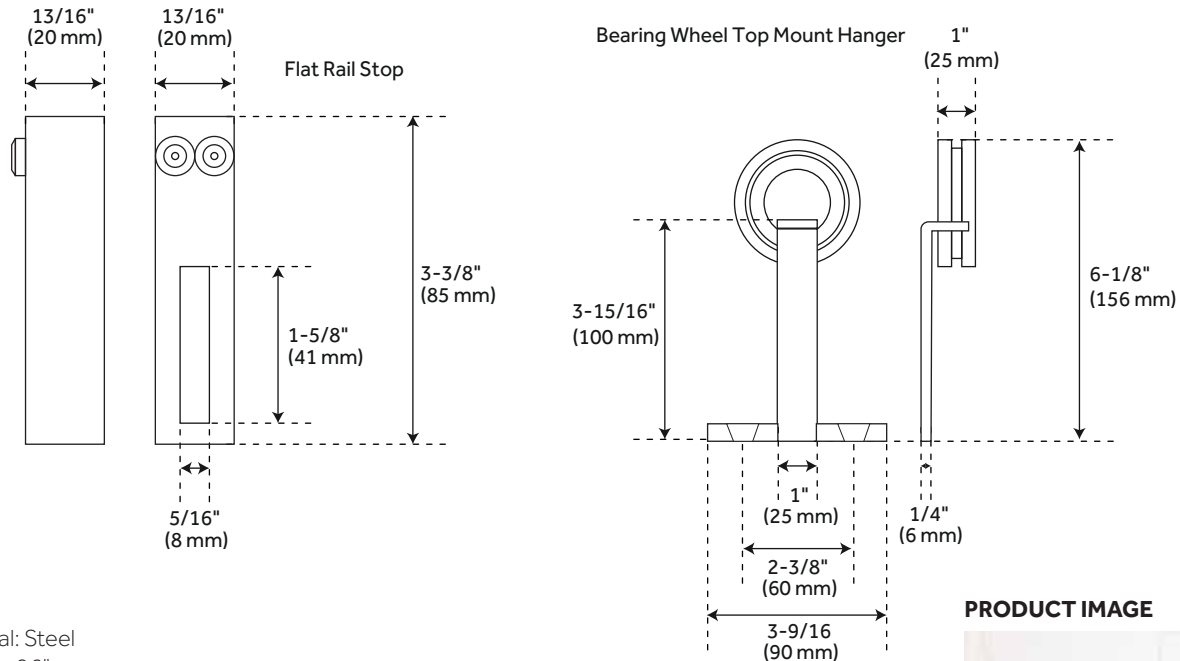
### FEATURES

Material: Steel  
 Length: 96"  
 Height: 6-1/8"  
 Depth: 1-3/8"  
 Mounting Hardware Included: Yes  
 Mounting Hardware Concealed: No  
 Weight Limit (Lbs): 220

### PRODUCT IMAGE



## SKU: 950680



Material: Steel  
Length: 96"  
Height: 6-1/8"  
Depth: 1-3/8"  
Mounting Hardware Included: Yes  
Mounting Hardware Concealed: No  
Weight Limit (Lbs): 220

## A close-up photograph of a sliding barn door hardware system. A black metal track is mounted on a white brick wall. A wooden door, with a vertical grain and a dark finish, is shown partially open, revealing the track and a black metal roller. The roller is a circular component with a central axle, mounted on the top edge of the door. The track is a long, straight bar with a small bracket at the end. The door is made of two vertical planks of wood, joined by a horizontal grain. The overall aesthetic is rustic and industrial.