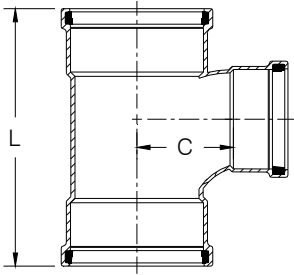


HARCO SDR-35 PVC GASKETED SEWER FITTINGS

DIMENSIONAL DATA

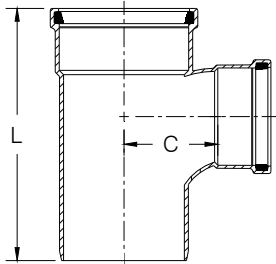
TEE- WYE GxGxG



(Molded fitting Shown)

SIZE	PART No.	STYLE	C	L	WT. (approx.)
4X4	35-050404	Molded	3.7	11.8	2.3
6X4	35-050604	Molded	4.6	15.5	4.6
6X6	35-050606	Molded	5.1	15.5	5.3
8X4	35-050804	Molded	5.6	14.2	6.8
8X6	35-050806	Molded	6.1	16.4	8.4
8X8	35-050808	Molded	6.3	17.8	9.6
10X4	35-051004	Fab	12.1	26.0	16.0
10X6	35-051006	Fab	13.8	29.0	19.0
12X4	35-051204	Fab	11.9	27.0	22.0
12X6	35-051206	Fab	14.4	30.0	26.0
15X4	35-051504	Fab	12.6	29.0	33.0
15X6	35-051506	Fab	15.8	32.0	41.0

TEE- WYE GxSxG



(Molded fitting Shown)

SIZE	PART No.	STYLE	C	L	WT. (approx.)
4X4	35-060404	Molded	3.7	11.8	2.0
6X4	35-060604	Molded	4.6	15.5	4.1
6X6	35-060606	Molded	5.1	15.5	4.5
8X4	35-060804	Molded	5.6	14.2	6.1
8X6	35-060806	Molded	6.1	16.4	7.6
8X8	35-060808	Molded	6.3	17.8	9.2

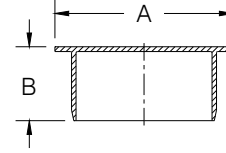
NOTES:

- All lay lengths & weights are approximate and are subject to change without notice.
- Fabricated fitting configurations may vary.

CAUTION: Vertical risers are not recommended.

Vertical risers are subject to problems without special consideration of soil/pipe interaction, dead & live loads, and installation procedures.

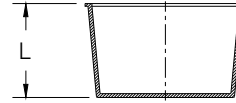
PERMANENT PLUG



(Molded fitting Shown)

SIZE	PART No.	STYLE	A	B	WT. (approx.)
4	35-4404	Molded	4.5	2.8	0.4
6	35-4406	Molded	6.7	3.7	1.1
8	35-4408	Molded	8.9	4.3	5.3
10	35-4410	Fab	11.1	6.0	7.0
12	35-4412	Fab	13.2	7.0	10.0
15	35-4415	Fab	16.2	9.0	17.0

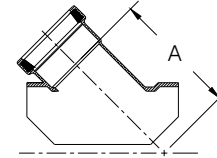
TEMPORARY PLUG (made from polyethylene)



(Molded fitting Shown)

SIZE	PART No.	STYLE	L	WT. (approx.)
4	35-4704	Molded	4.3	0.2
6	35-4706	Molded	3.8	0.3
8	35-4708	Molded	8.4	0.9

SADDLE WYE

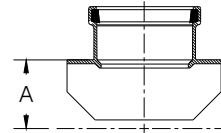


(Saddle gasket & SS straps not shown)

(Molded fitting Shown)

SIZE	PART No.	STYLE	A	WT. (approx.)
6x4	35-550604	Molded	8.9	1.4
8x4	35-550804	Molded	10.4	1.5
8x6	35-550806	Molded	12.0	3.3
10x4	35-551004	Molded	11.9	1.2
10x6	35-551006	Molded	13.0	3.3
12x4	35-551204	Molded	13.4	1.2
12x6	35-551206	Molded	14.3	3.8

SADDLE TEE



(Saddle gasket & SS straps not shown)

(Molded fitting Shown)

SIZE	PART No.	STYLE	A	WT. (approx.)
6x4	35-560604	Molded	3.3	1.0
8x4	35-560804	Molded	4.5	1.2
8x6	35-560806	Molded	4.7	2.4
10x4	35-561004	Molded	5.5	3.3
10x6	35-561006	Molded	5.7	2.3
12x4	35-561204	Molded	6.5	1.2
12x6	35-561206	Molded	6.6	3.1

CALL FOR OTHER SIZES, CONFIGURATIONS & GASKET MATERIALS.



THE HARRINGTON CORPORATION

P.O. BOX 10335 • LYNCHBURG VIRGINIA 24506 • PLANT 3721 COHEN PLACE • LYNCHBURG VIRGINIA 24501
PHONE: (434) 845-7094 • FAX: (434) 845-8562 • E-MAIL: sales@harcofittings.com