

U.S. SAWS

Surface Preparation



Industrial Concrete Flooring Equipment
2019 Product Catalog

www.ussaws.com | 877-817-6687

GRINDER-VAC PACKAGES



7" Pro Grinder-Vac Package Special

Includes: Metabo 24-230 15 amp, 6,600 rpm grinder, Generation 2 convertible dust shroud, loop handle, and (2) 7" 12 segment standard thread-on turbo cup wheels

SX60006PPG2

\$430.00



5" HD Economy Grinder-Vac Package Special

Includes: Metabo 13.5 amp, 2,800 to 9,600 rpm variable speed grinder, convertible edging style hub dust shroud, and (1) 4.5" 9 segment turbo cup wheel

SX65000EC

\$365.00

GRINDER-VAC PACKAGES



7" Pro Grinder-Vac

Includes: Metabo 15 amp 8,500 rpm or 6,600 rpm grinder, US Saws polyurethane convertible edging style pro dust shroud, loop handle, pro blade adapter nuts, blade nut wrench, and allen wrench

8,500 rpm model

SX60010CG2

\$594.00

6,600 rpm model

SX60006CG2

\$556.00



5" Pro Grinder-Vac

Includes: Metabo 13.5 amp, 2,800 to 9,600 rpm variable speed or 8 amp 10,000 rpm grinder, US Saws polyurethane convertible edging style pro dust shroud, loop handle, 4.5" 9 segment cup wheel, pro blade adapter nuts, blade nut wrench, and allen wrench

2,800-9,600 rpm model

SX65000C

\$599.00

10,000 rpm model

SX65005C

\$420.00

5" SHROUD KITS



Deluxe Shroud Kits

Custom made to fit: Bosch, DeWalt, Hilti, Makita, Metabo, and Milwaukee model grinders
Includes: convertible edging style dust shroud, aluminum adapter ring, long and short pro blade nuts, blade nut wrench, and allen wrench

Metabo models	\$209.00
Other models	\$239.00



Basic Shroud Kits

Custom made to fit: Bosch, DeWalt, Hilti, Makita, Metabo, and Milwaukee model grinders
Includes: convertible style dust shroud and aluminum adapter ring

Metabo models	\$90.00
Other models	\$159.00

7" SHROUD KITS



Deluxe Shroud Kits

Custom made to fit: Bosch, DeWalt, Hilti, Makita, Metabo, and Milwaukee model grinders
Includes: convertible edging style dust shroud, aluminum adapter ring, long and short pro blade nuts, blade nut wrench, and allen wrench

Metabo models	\$229.00
Other models	\$259.00



Basic Shroud Kits

Custom made to fit: Bosch, DeWalt, Hilti, Makita, Metabo, and Milwaukee model grinders
Includes: convertible style dust shroud and aluminum adapter ring

Metabo models	\$159.00
Other models	\$189.00

5" GRINDER-VAC ACCESSORIES



Loop Handle Assembly

Fits on a variety of grinders and provides increased operator comfort

Includes: loop handle with rubber grip, bolts, and lock washers

5" Assembly **SX53900** **\$39.00**



Pro Replacement Shrouds

Includes: polyurethane replacement shroud only; for use with U.S. Saws' adapter rings

5" Convertible	SX65852	\$85.00
5" Full	SX65850	\$65.00

7" GRINDER-VAC ACCESSORIES



7" Universal Grinder-Vac Kits

Includes: 7" convertible edging style dust shroud, (5) polyurethane adapter rings, and collar clamp

Fits 7" & 9" 15 amp grinders manufactured by:

Bosch, DeWalt, Hitachi, Makita, Metabo, or Milwaukee

Convertible Kit	SX13650	\$129.00
Full Kit	SX13600	\$99.00

Pro Replacement Shrouds

Includes: polyurethane convertible edging style replacement shroud only; for use with U.S. Saws' adapter rings

7" Convertible	SX65803	\$95.00
7" Convertible G2	SX65807	\$95.00
7" Heavy-Duty Convertible	SX65803H	\$115.00



Loop Handle Assembly

Fits on a variety of grinders and provides increased operator comfort

Includes: loop handle with rubber grip, bolts, and lock washers

7" Loop Handle **SX73907** **\$59.00**

Anti-Vibration Mount



Short - 4.5" Zec	05-69003	\$6.00
Short with 2 Spacers	05-69001	\$6.00
Medium with 1 Spacer	05-69006	\$9.00
Long - 7" Zec	05-69004	\$9.00

5" POLISHING PACKAGES



5" Pro Polishing Assembly

Includes: Metabo PE15-30 variable speed grinder (13 Amp, 800 to 3,000 RPM), 5" US Saws polyurethane convertible edging style shroud, 5" loop handle, and 5" flexible backing pad

SX65005CP

\$529.00

5" POLISHING ACCESSORIES



Standard Concrete Polishing Pad Packs

Require backing pad (sold separately)

Includes Grits: #50, #100, #200, #400, #800, #1500, #3000

5" Package

PPN5GPACK

Honeycomb Concrete Polishing Pad Packs

High production polishing pads. Require backing pad (sold separately)

Includes Grits: #50, #100, #200, #400, #800, #1500, #3000

5" Package

PHN05PACK



5" Polishing Shroud Kit for Metabo PE15-30 Grinder

Includes: convertible style dust shroud, adapter ring, and 5" backing pad

SX65216

\$169.00

7" POLISHING PACKAGES



7" Pro Polishing Assembly

Includes: Metabo PE15-30 variable speed grinder (13 Amp, 800 to 3,000 RPM), 7" convertible shroud, 5" loop handle, and 7" flexible backing pad

SX60006CP

\$559.00

7" POLISHING ACCESSORIES



Standard Concrete Polishing Pad Packs

Require backing pad (sold separately)

Includes Grits: #50, #100, #200, #400, #800, #1500, #3000

7" Package

PPN7GPACK

Honeycomb Concrete Polishing Pad Packs

High production polishing pads. Require backing pad (sold separately)

Includes Grits: #50, #100, #200, #400, #800, #1500, #3000

7" Package

PHN07PACK

7" Polishing Shroud Kit for Metabo PE-15-30 Grinder

Includes: convertible style dust shroud, adapter ring and 7" backing pad

SX60216

\$198.00

(877) 817-6687 | www.ussaws.com

DUST COLLECTION

U.S. Saws' Ultra Vac Dust Collection Systems

This line of dust collection systems is designed specifically for concrete dust and for the construction industry. Using our extensive knowledge and experience in the surface preparation industry, our Ultra Vacs are engineered to be the most efficient, durable vacuums on the market.

They feature front and rear handles for easy transportation, heavy-duty wheels that roll over cords and job site debris easily, shaker style filter clearing, large capacity dust bins, and large multi-pleated filters that allow for longer use.



DUST COLLECTION



Model	Ultra Vac 1250 Gas
Part Number	SX50005G
CFM	450
Water Lift	115
Dust Bin	12.5 Gallons
Power Source	Honda Gas Engine GX240
Filter Size	18.3 sq. ft.
Weight	170 lbs
Hose Inlet Size	3"
Frame / Body	Tube Steel / High Density Polyethylene
Price	\$5900.00



Model	Ultra Vac 1250	Ultra Vac 1250 - HEPA
Part Number	SX50005	SX50000
CFM	220	220
Water Lift	110"	110"
Dust Bin	12.5 Gallons	12.5 Gallons
Amperage	17 Amp	17 Amp
Voltage	120V	120V
Filter Size	18.3 sq. ft.	18.3 sq. ft.
Weight	96 lbs	96 lbs
Price	\$2155.00	\$2695.00



Ultra-Vac 1250 Bagger Vac

This steel frame pairs with Ultra-Vac 1250 models to convert them into a bagging vacuum system.

Vacuum sold separately.



Base Only

SX50110

\$995.00

DUST COLLECTION



Model	Ultra Vac 950 - HEPA
Part Number	SX50950
CFM	175
Water Lift	110
Dust Bin Capacity	9.5 Gallons
Amperage	14 Amp
Voltage	120V
Filter Size	13.7 sq. ft
Weight	70 lbs
Hose Inlet Size	2"
Frame/ Body	Tube Steel / High Density Polyethylene
Price	\$1625.00



Cyclone Pre-Separator

A low cost way to turn your shop-vac into an effective, industrial dust collector!

Separates 99% of the dust before it reaches the shop-vac.

Model	Cyclone Separator	Cyclone Separator with 10 Bags
Part Number	SX24445	SX24445BAG
Power Source	Powered By Your Shop Vacuum Unit	
Included Accessories	8' 2-1/4" Hose and 5 Gallon Bucket Dolly	
Price	\$230.00	\$279.00

COMPATIBLE PRODUCTS

Vacuum Model	
Cyclone Pre-separator	(1) 5" or 7" Hand-held Grinder-vac
Ultra-Vac 950	(1) 5" or 7" Hand-Held Grinder-Vac
Ultra-Vac 1250	(1) 5" or 7" Hand-Held Grinder-Vac, (1) Dust Buggy, (1) Early Entry Concrete Saw, 8" Scarifiers, Shotblasters, or Small Planetary Grinders and Polishers
Ultra-Vac 1250 Gas Vac	(1) Dust Buggy, (1) Early Entry Concrete Saw, (1) JS-130 Joint Saw, (1) CC-100 Walk-Behind Crack Chasing Saw, or Multiple Small Planetary Grinder or Joint Saws

TC-7 EDGER



The most technologically advanced edging dolly on the planet. Designed to give the operator the feel of the grinder in his hands while maintaining a comfortable upright position.

TC-7 Edger	
Part Number	SX67000
Power Source	Metabo 24- 230 15 AMP 6600 RPM
Includes	Metabo 24-230, 7" 24 segment turbo cup wheel and shroud
Power Requirements	115V 15A
Grinding Wheels Used	7" Diamond Cup Wheels, PCDs, ZEC Wheels, EZ Edge Ceramic Wheels, Polishing Pads
Weight	49lbs
Price	\$2,200.00

ADD - ON PACKAGES

Variable Speed Control Box



Add to the TC-7 to make it a variable speed polisher

SX67099
\$255.00

Polishing Set



The tools you need for polishing: 120 grit bi-turbo metal, 50-3000 resin pads, steel core backing pad & adaptor nut.

SX-TC7Polishing Set
\$470.00

VSG-10 GRINDER/POLISHER



The variable speed grinder is an easy to use, floor grinder/polisher that will prep concrete surfaces in areas that cannot be accessed by larger equipment. 115V power, variable speed and adjustable head pressure makes this machine excellent for smaller job sites.

VSG-10	
Part Number	SX61000
Power Requirement	115V 15 Amp Electric
Max RPM	400 - 1,500
Grinding Wheels Used	Fast Change Diamonds, PCDs, and Polishing Pads
Weight	155 lbs
Price	\$4,000.00



POLYMER PUMP



One- Man Polymer Pump

The New Design of this joint fill pump allows for one person operation. The unit comes standard with a 1:1 component ratio, but a 2:1 component ratio is available. Lower tanks it makes for easier filling. There is a dedicated storage area for generator or battery. Also equipped with a box for tools storage and a waste bucket holder for less drips on the floor.



SX20500

\$7250.00



This pump can also be used to mix and dispense certain polyaspartic floor coatings. Please contact customer service for more information

POLYMER PUMP



Dual Component Polymer Pump

A simple to use, easy to maintain, efficient joint fill pump. Single chain gear drive keeps the pumping ratio consistent. Semi-transparent tanks allow the user to monitor fluid levels. Can be used with a power inverter and battery for cordless use.

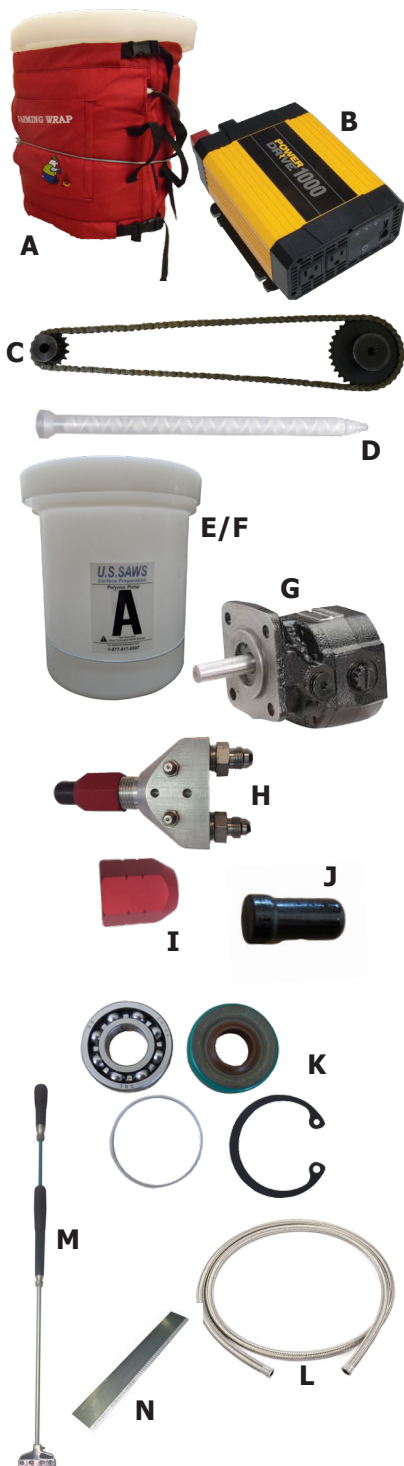
SX20000

\$6,899.00



This pump can also be used to mix and dispense certain polyaspartic floor coatings. Please contact customer service for more information

DUAL COMPONENT PUMP ACCESSORIES



(A) <u>Tank Warmers (Set of 2)</u> SX20017	\$200.00
(B) <u>Power Inverter</u> SX20018	\$300.00
(C) <u>2:1 Ratio Kit</u> SX21000	\$99.00
(D) <u>Replacement Static Mixer</u> (Quantity: 20) SX20010-20	\$53.50
(E) <u>6.5 Gallon Tank</u> SX20005-5	\$67.50 ea.
(F) <u>6.5 Gallon Tank Lid</u> SX20005-6	\$18.75 ea.
(G) <u>Replacement Pump</u> SX20201	\$395.00
(H) <u>Manifold with Grease Fittings</u> SX20118	\$150.00
(I) <u>Static Mixer Retaining Nut</u> SX20111	\$13.00
(J) <u>Static Mixer Cap</u> SX20012	\$3.00
(K) <u>Pump Seal Kit</u> SX20201-1	\$68.00
(L) <u>Hose with fittings (each)</u> SX20410	\$115.00
(M) <u>5" Hand Scraper</u> CTHDS0305ERG	\$185.00
(N) <u>5" Scraper Replacement Blades</u> 50 ct: CTHDS03BL50 100 ct: CTHDS03BL100	\$60.00 \$110.00

JOINT CLEANOUT

US Saws has been a leader and innovator in joint cleanout repair equipment for over 25 years. We are dedicated to constant improvement, meeting our customers' needs, and making the job more efficient and profitable.



HEAVY-DUTY DUST BUGGY

Heavy duty joint cleanout saw perfect for indoor control joint work. Its up-cut blade rotation allows debris to be removed from joints as your moving forward. Designed to clean out existing control joints before filling, or to remove failing or deteriorated epoxy, polyurea, or polyurethane joint fillers.

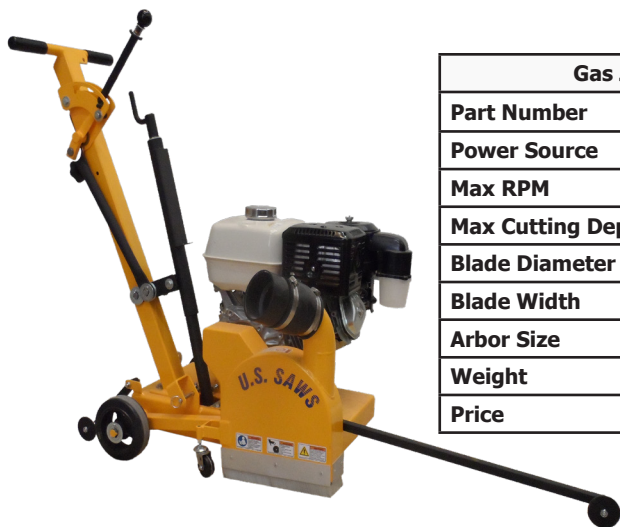


Mark3 Dust Buggy	
Part Number	SX13700
Grinder Make/Model	Metabo W24-230
Output Power	15 Amp Electric
Max RPM	6,600
Power Requirments	115V, 60Hz
Max Cutting Depth	2"
Blade Diameter	7" or 8" Dry Diamond
Blade Width	7" or 8" Dry Diamond
Blade Arbor	7/8"
Weight	56 lb
Price	\$1650.00

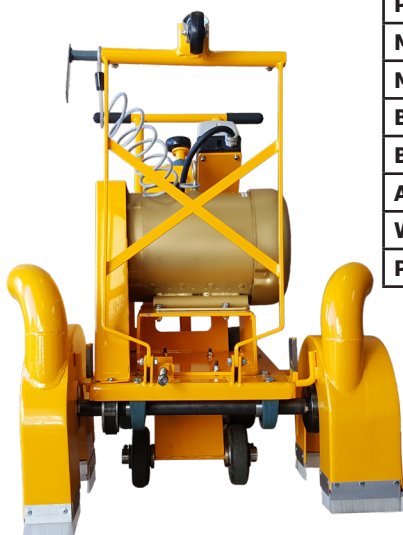


Heavy Duty Dust Buggy	
Part Number	SX13550
Grinder Make/Model	Metabo W24-230
Power Source	15 Amp Electric
Max RPM	6,600
Power Requirements	120V, 60Hz
Max Cutting Depth	2"
Blade Diameter	7" or 8" Dry Diamond
Blade Width	.090", .125", .250"
Blade Arbor	7/8"
Weight	48 lb
Price	\$1499.00

JOINT CLEANOUT SAWS



Gas JS Saw Model JS-130	
Part Number	SX77130
Power Source	13 HP Honda Gas
Max RPM	5,850
Max Cutting Depth	2-3/4"
Blade Diameter	8" or 10" Dry Diamond
Blade Width	.090", .125", .250" .375", .500"
Arbor Size	1" with Drive Pin Hole
Weight	185 lb
Price	\$4,500.00



Electric JS Saw Model JS-100E	
Part Number	SX77100E
Power Source	480V - 3 Phase Electric Motor
Max RPM	5,850
Max Cutting Depth	2-3/4"
Blade Diameter	8" or 10" Dry Diamond
Blade Width	.095", .125", .250" .375", .500"
Arbor Size	1" with Drive Pin Hole
Weight	650 lb
Price	\$7,700.00



TUC-POINTERS & CRACK CHASERS



*Tuc-Pointer shown with blade
(sold separately)*



**5 Year Warranty
on Shroud!**

Tuc-Pointer		
Part Number	SX55010	SX55014
Grinder Make/ Model	5" Metabo WE15-125	5" Metabo W9-115
Power	13.5 Amp Electric Variable Speed	8.5 Amp Electric
RPM	2,800-9,600	10,500
Power Requirements	120V, 60Hz	120V, 60Hz
Max Cutting Depth	1-1/4"	1-1/4"
Blade Diameter	4", 4.5" or 5" Dry Diamond	4", 4.5", or 5" Dry Diamond
Price	\$539.00	\$430.00



Cut Vac		
Part Number	SX70000	SK70000K
Description	Hand-Held Crack Chaser	Hand-Held Crack Chaser
Grinder/Motor Make/Model	Metabo W24-180	Metabo W24-180
Power Source	15 Amp 110V Electric	15 Amp 110V Electric
Max RPM	8,500	8,500
Max Cutting Depth	1-1/8"	1-1/8"
Blade Diameter	7" or 8"	7" or 8"
Blade Width	.250", .375"	.250", .375"
Blade Arbor	7/8"	7/8"
Weight	27 lb	47 lb
Price	\$965.00	\$1325.00



WALK-BEHIND CRACK CHASERS

CC-100

The CC-100 is the fastest and most productive walk-behind crack chaser on the market. The operator pulls the saw backward so that they have a clear view of the cutting blade. Its unique pivoting system allows the saw to cut tight curves effortlessly to reduce stopping and re-starting. It can also be used for joint cleanout.



CC-100	
Part Number	SX90102
Description	Walk-Behind Crack Chaser
Motor Make/Model	Honda GX270
Power Source	9 HP Gas
Max RPM	8,775
Max Cutting Depth	1"
Blade Diameter	6" Dry Diamond
Blade Width	.250", .375", .500"
Blade Arbor	5/8" with Drive Pin Hole
Weight	140 lb
Price	\$4,500.00

DECORATIVE SCORING SAWS

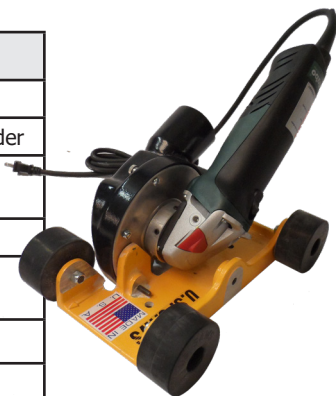
Battery Operated Scoring Saw

Part Number	SX13400
Power	DeWalt DC411 KA 18V
Speed	7,500 - 10,000 Variable Speed
Voltage	12 Amp
Blade Capacity	4", 4.5", & 5" Dry Diamond
Depth of Cut	3/4"
Arbor	5/8" / 7/8"
Weight	16 lbs
Price	\$699.00



Scoring Saw

Part Number	SX13402	SX13401
Power	W14-125 Metabo Grinder	W8-115 Metabo Grinder
Speed	7,500 - 10,000 Variable Speed	10,000
Voltage	12 Amp	12 Amp
Blade Capacity	4", 4.5", & 5" Dry Diamond	4", 4.5", & 5" Dry Diamond
Depth of Cut	3/4"	3/4"
Arbor	5/8" / 7/8"	5/8" / 7/8"
Weight	16 lbs	16 lbs
Price	\$599.00	\$699.00



360° Wheel Kit (Set of 4)

Add the 360° wheel kit to the scoring saw to turn the decorative saw, into a crack chasing saw.

Part No. SXOMNI

\$100.00



CUP WHEELS



Turbo Cup Wheels	
Description	Part No.
4"x7/8" 8 Segment Std	CW4TR8PDB
4"x7/8" 16 Segment Std	CW4TR16SDN
4.5"x7/8" 9 Segment Std	CW4TR16SDN
4.5"x7/8" 10 Segment Prem	CW45TR10PDS
4.5"x7/8" 18 Segment Std	CW45TR18SDN
4.5"x7/8" 18 Segment Prem	CW45TR18PDS
7"x7/8" 12 Segment Std	CW7TR12SDN
7"x7/8" 12 Segment Prem	CW7TR12PDS
7"x7/8" 24 Segment Std	CW7TR24SDN
7"x7/8" 24 Segment Prem	CW7TR24PDS



7" SWAT Cup Wheels	
Description	Part No.
3+3 most aggressive	CW7SW33DS
6+3 aggressive; longer life than 3+3	CW7SW63DS
9+9 longest life	CW7SW99DS

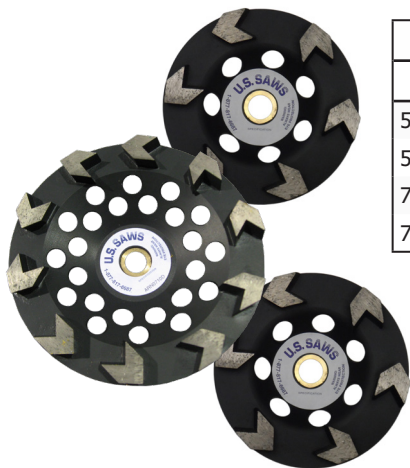


Bi- Turbo Cup Wheel	
Description	Part No.
4.5"x7/8" 14 Segment #18 Grit	CW45TN14PDS
5"x7/8" 18 Segment #16/20 Grit	CW5BT9918SDN
5"x7/8" 18 Segment #60/80 Grit	CWBT9960SDN
5"x7/8" 18 Segment #120/150 Grit	CW5BT99120SDN
7"x7/8" 3 Segment #16/20 Grit	CW7TN3SDN
7"x7/8" 6 Segment #16/20 Grit	CW7TN6SDN
7"x7/8" 9 Segment #16/20 Grit	CW7TN9SDN
7"x7/8" 18 Segment #16/20 Grit	CW7BT9918DN
7"x7/8" 18 Segment #60/80 Grit	CW7BT9960DN
7"x7/8" 18 Segment #120 Grit	CW7BT99120PDN

AGGRESSIVE CUP WHEELS

Best production when used on thin coatings, epoxy and other paint materials. The angle of the arrow shaped segment allows the wheel to scrape and grind at the same time. The design allows segments to burrow underneath coatings and adhesives to remove them.

Provides fast production rates and long life.



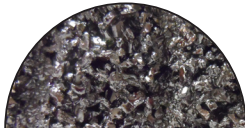
Arrow Segment Cup Wheels	
Description	Part No.
5"x7/8" 6 Segment	CW5AR6PDS
5"x5/8"-11 6 Segment	CW5AR6PTS
7"x7/8" 10 Segment	CW7AR10PDS
7"x5/8"-11 10 Segment	CW7AR10PTS

Best production when used on thick coatings, epoxy, urethane and other membrane materials without loading up. Quarter round PCD segments for fast production and long life; select fewer segments for more aggressive action.

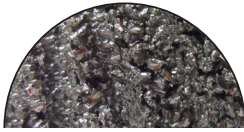
PCD Cup Wheels	
Description	Part No.
5" 4 Quarter Round Segment PCD Wheel	CW5PCD4DN
5" 6 Quarter Round Segment PCD Wheel	CW5PCD6DM
5" 12 Sharp Segment, Double Row PCD Wheel	CW5PCD12SDR
7" 6 Quarter Round Segment PCD Wheel	CW7PCD6R
7" 6 Quarter Round Segment w/3 Sweeper Segments	CW7PCD63PM
7" 8 Quarter Round Segment, Double Row PCD Wheel	CW7PCD8DN
7" 24 Sharp Segment, Triple Row PCD Wheel	CW7PCS24T



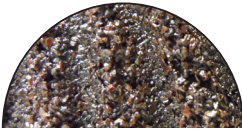
ZEC WHEELS



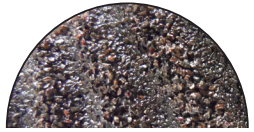
#12 Grit



#16 Grit



#24 Grit



#36 Grit



Epoxy



Glue/Mastic



Paint

Zec® Silicon Carbide Disc (The Original)

Best for removal of mastics, soft coatings, urethanes, epoxies, carpet glue, or paint. Spiral design and air holes allow disc to run cooler, preventing loading.

Several grits for different coating removal applications

No backing pad required

Sold in packages of 5



Description	Part No.
4.5" #12 Grit	ZEC4512L
4.5" #16 Grit	ZEC4516L
4.5" #24 Grit	ZEC4524L
4.5" #36 Grit	ZEC4536L
4.5" #50 Grit	ZEC4550L
4.5" #60 Grit	ZEC4560L
4.5" #80 Grit	ZEC4580L
4.5" #120 Grit	ZEC45120L
7" #12 Grit	ZEC712L
7" #16 Grit	ZEC716L
7" #24 Grit	ZEC724L
7" #36 Grit	ZEC736L

Silicon Carbide Disc (Non-branded)

Best for coatings removal of mastics, soft coatings, urethanes, epoxies, carpet glue, or paint

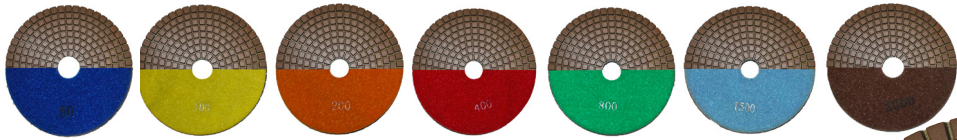
No backing pad required

Sold in packages of 5



Description	Part No.
4.5" #8 Grit	05-20749
4.5" #16 Grit	05-20750
7" #8 Grit	05-20705
7" #16 Grit	05-20700

POLISHING PADS



Concrete Polishing Pads (Standard)

*Require backing pad (sold separately)

Start with lower numbered (coarser) grit and progress to higher numbered grit



5" Package: Part No.

PPN5GPACK

7" Package: Part No.

PPN7GPACK

(Includes one of: #50, #100, #200, #400, #800, #1500, and #3000)

5" Backing Pad: Part No.

PPN5BP

7" Backing Pad: Part No.

PPN7BP

Concrete Polishing Pads		
Grit	5" Part No.	7" Part No.
#50	PPN5G0050	PPN7G0050
#100	PPN5G0100	PPN7G0100
#200	PPN5G0200	PPN7G0200
#400	PPN5G0400	PPN7G0400
#800	PPN5G0800	PPN7G0800
#1500	PPN5G1500	PPN7G1500
#3000	PPN5G3000	PPN5G3000



Concrete Polishing Pads (Honeycomb)

*Require backing pad (sold separately)

Start with lower numbered (coarser) grit and progress to higher numbered grit



5" Package: Part No.

PHN05PACK

7" Package: Part No.

PHN07PACK

(Includes one of: #50, #100, #200, #400, #800, #1500, and #3000)

5" Backing Pad: Part No.

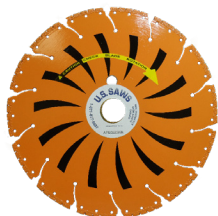
PPN5BP

7" Backing Pad: Part No.

PPN7BP

Honeycomb Polishing Pads		
Grit	5" Part No.	7" Part No.
#50	PHN050050	PHN070050
#100	PHN050100	PHN070100
#200	PHN050200	PHN070200
#400	PHN050400	PHN070400
#800	PHN050800	PHN070800
#1500	PHN051500	PHN071500
#3000	PHN053000	PHN073000

BLADES

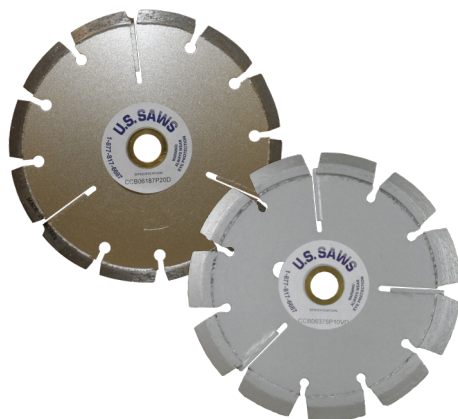


Description	Part No.
7"x.090"x7/8"	APB07090
7"x.125"x7/8"	APB07125D
8"x.095"x7/8"	APB08095D
8"x.125"x7/8"	APB08125D

Description	Part No.
8"x.095"x1" w/DPH	APB08095E
8"x.125"x1" w/DPH	APB08125E
10"x.095"x1" w/DPH	APB10095E



Description	Part No.	Description	Part No.
8"x.095"x1" w/DPH	DCB08095UE	7"x.095"x7/8"	DCB07095UD
8"x.125"x1" w/DPH	DCB08125UE	7"x.125"x7/8"	DCB07125UD
8"x.250"x1" w/DPH	DCB08250UE	7"x.250"x7/8"	DCB07250UD
10"x.110"x1" w/DPH	DCB10110UE	8"x.095"x7/8"	DCB08095UD
10"x.125"x1" w/DPH	DCB10125UE	8"x.125"x7/8"	DCB08125UD
10"x.187"x1" w/DPH	DCB10187UE	8"x.250"x7/8"	DCB08250UD
10"x.250"x1" w/DPH	DCB10250UE	8"x.375"x7/8"	DCB08375UD



Description	Part No.
"V" Shaped Segments	
4"x.375"x7/8"	CCB04375PVD
4.5"x.375"x7/8"	CCB45375PVD
5"x.375"x7/8"	CCB05375PVD

Description	Part No.
Rectangular Segments w/DPH & Kicker Segments	
6"x.250"x5/8"	CCB06250PD
6"x.375"x5/8"	CCB06375PD
6"x.500"x5/8"	CCB06500PD
"V" Shaped Segments w/DPH & Kicker Segments	
6"x.250"x5/8"	CCB06250PVD
6"x.375"x5/8"	CCB06375PVD
6"x.500"x 5/8"	CCB06500PVD

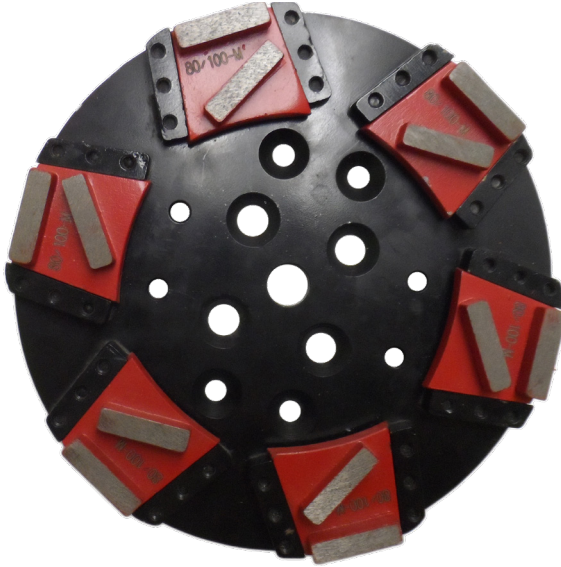
Description	Part No.	Description	Part No.
Rectangular Segments			
4"x.080"x7/8"	DCB04080U	5"x.060"x7/8"	DTB05060P
4"x.250"x7/8"	DCB04250P	5"x.080"x7/8"	DCB05080U
4"x.375"x7/8"	DCB04375P	5"x.250"x7/8"	DCB08250P
4.5"x.080"x7/8"	DCB45080U	5"x.375"x7/8"	DCB08375P

FAST CHANGE DIAMOND TOOLING

Fast Change Plate System

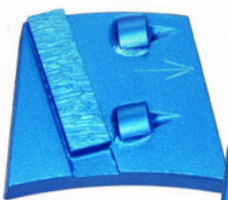
Increases production by reducing downtime due to changing out diamond tooling Easy to install.

Plates are available for the **VSG-10** and many other makes/models of planetary machines.



Grit	Part No.
Single Segment	
# 6	SWN1R6FC
# 16/20	SWN1R18FC
# 30/40	SWN1R30FC
# 60/80	SWN1R60FC
# 120/150	SWN1R120FC

Grit	Part No.
Double Segment	
# 6	DWN2R6FC
# 16/20	DWN2R18FC
# 30/40	DWN2R30FC
# 60/80	DWN2R60FC
# 120/150	DWN2R120FC



Direction	Part No.
PCD with Sweeper Segment	
Right	PWNQRRWFC
Left	PWNQRLWFC

Direction	Part No.
Standard PCD	
Right	PWNQRRFC
Left	PWNQRLFC

DIAMOND TOOLING



Ceramic/Resin Hybrid
3" velcro diamond pads

Description	Part No.
#50 Grit	HR50Q
#100 Grit	HR100Q
#200 Grit	HR200Q
#400 Grit	HR400Q
#800 Grit	HR800Q
#1500 Grit	HR1500Q



Thin Resin Pads
3" thin, velcro resin pads

Description	Part No.
#50 Grit	PPT030050
#100 Grit	PPT030100
#200 Grit	PPT030200
#400 Grit	PPT030400
#800 Grit	PPT030800
#1500 Grit	PPT031500



Resin Pads
3" thick, velcro resin pads

Description	Part No.
#50 Grit	VPN0350
#100 Grit	VPN03100
#200 Grit	VPN03200
#400 Grit	VPN03400
#800 Grit	VPN03800
#1500 Grit	VPN031500



3" Velcro Resin Pad Holder

Enables use of resin pads and 3" velcro polishing pads on fast change plates.
For use with U.S. Saws' VSG-10.

Part No. VF CRH3



9.5" Kindex ELICA Resin Pad

Application: polished concrete, trowelled concrete, concrete overlay, marble, terrazzo, and natural stone restoration and polishing

To be used wet or dry

Also available in 13", 16", 17", and 20"

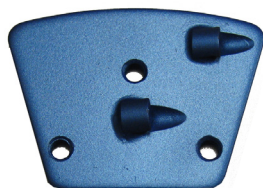
Available in #400, #800, #1500, and #3000

TRAPEZOIDS



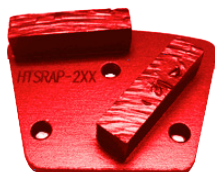
Grit	Part No.
Single Segment	
#6	SWN1R6
#16/20	SWN1R18
#30/40	SWN1R30
#60/80	SWN1R60
#120/150	SWN1R120

Grit	Part No.
Double Segment	
#6	DWN2R6
#16/20	DWN2R18
#30/40	DWN2R30
#60/80	DWN2R60
#120/150	DWN2R120



Description	Part No.
2 Quarter Round RH	PWNQRR
2 Quarter Round LH	PWNQRL

Part No.	Description
DTTR2RD18ST	#18/20 Grit Soft Bond
DTTR2RD30ST	#30/40 Grit Soft Bond
DTTR2RD60ST	#60/80 Grit Soft Bond
DTTR2RD120ST	#120/150 Grit Soft Bond
DTTR2RD18MT	#18/20 Grit Medium Bond
DTTR2RD30MT	#30/40 Grit Medium Bond
DTTR2RD60MT	#60/80 Grit Medium Bond
DTTR2RD120MT	#120/150 Grit Medium Bond
DTTR2RD18HT	#18/20 Grit Hard Bond
DTTR2RD30HT	#30/40 Grit Hard Bond
DTTR2RD60HT	#60/80 Grit Hard Bond
DTTR2RD120HT	#120/150 Grit Hard Bond



Description	Part No.
Single Seg.	PWNDCP1
Double Seg.	PWNDCP2



Grit	Part No.
Hard Bond	
#16/20	AWN2BX18
#30/40	AWN2BX30
#60/80	AWN2BX60

DIAMOND TOOLING

Diamond Pucks



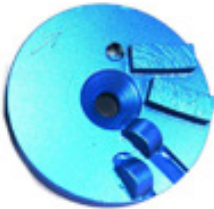
Part No.	Description
5 SEGMENT BEVELLED	
BPN030518	3" #16/20 Grit
BPN030530	3" #30/40 Grit
BPN030560	3" #60/80 Grit
BPN0305120	3" #120/150 Grit

Part No.	Description
10 SEGMENT BEVELLED	
BPN031018G	3" #16/20 Grit
BPN031030	3" #30/40 Grit
BPN031060	3" #60/80 Grit
BPN031080	3" #80/100 Grit
BPN0310120	3" #120/150 Grit

Diamond Plugs



Part No.	Description
SOLID PLUGS	
FPN0206M	2" #6 Grit
FPN0218M	2" #18 Grit
FPN0230M	2" #30/40 Grit
FPN0250M	2" #50/60 Grit
FPN0280M	2" #80/100 Grit
FPN02120M	2" #120/150 Grit



Part No.	Description
PCD-SEGMENT PLUGS	
PPLN032HL	3" (2) 1/2 Round PCD Segments, (1) Wear Segment
PPNHRL	3" (2) Half Round PCD Segments, (2) Stabilizer Segments (Left)
PPNHRR	3" (2) Half Round PCD Segments, (2) Stabilizer Segments (Right)



Part No.	Description
PLUGBODY	Tapered Plug Body w/Bolt
PPNEZPLUG	E/Z Plug Holder

DIAMOND TOOLING



10" Diamond Arrow Segmented Grinding Plates

Used for thick coatings, epoxy, glue, resin & other membrane removal. The angle of the arrow shaped segment allows segment to scrape and grind at the same time. The design allows segments to burrow underneath coatings and adhesives.

Description	Part No.
10 Segment	ARN1010P20F
20 Segment	ARN1020P20F



10" Segmented Grinding Plates

Used for cleaning, smoothing & coating removal. Designed for 10" high speed grinders. Select fewer segments for more aggressive grinding; more segments for longer life.

10 or 20 segment grinding plate with 4 bolt holes

Description	Part No.
10 Segment	FGN1010P20F
20 Segment	FGN1020P20F



Easy Edge

Easy Edge is a revolutionary design that improves the quality of edge work while reducing the scratches and gouging that metal bond cup wheels can cause. The Easy Edge™ system will eliminate metal bond cup wheels on most concrete polishing projects. Easy Edge is fast, lightweight, and easy to use resulting in a superior edge. Works well on hard, medium and soft concrete. Dry or wet.

Description	Part No.	Description	Part No.
7" #30 Grit	CTO07030G	7" #270 Grit	CTO07270G
7" #50 Grit	CTO07050G	7" #400 Grit	CTO07400G
7" #100 Grit	CTO07100G		



Supershine Spongelux Kit (17")

New and revolutionary diamond discs to restore the gloss on marble and terrazzo floors. Used regularly, they maintain floors' bright shine and look newly polished. Easy to use. Use them as a normal "floor pad" disc with mono brush machines or auto-scrubbers. They remove scratches, deep clean, and polish.

KL30178K

\$480.00



Toll Free: (877) 817-6687

11 High Street
Suffield, CT 06078
(860) 668-2402 Phone
(860) 668-2404 Fax

3702 W. Central Avenue
Santa Ana, CA 92704
(714) 434-7297 Phone
(714) 434-7299 Fax

8004-B E. Broadway Avenue
Tampa, FL 33619
(813) 621-8015 Phone
(813) 621-7125 Fax