



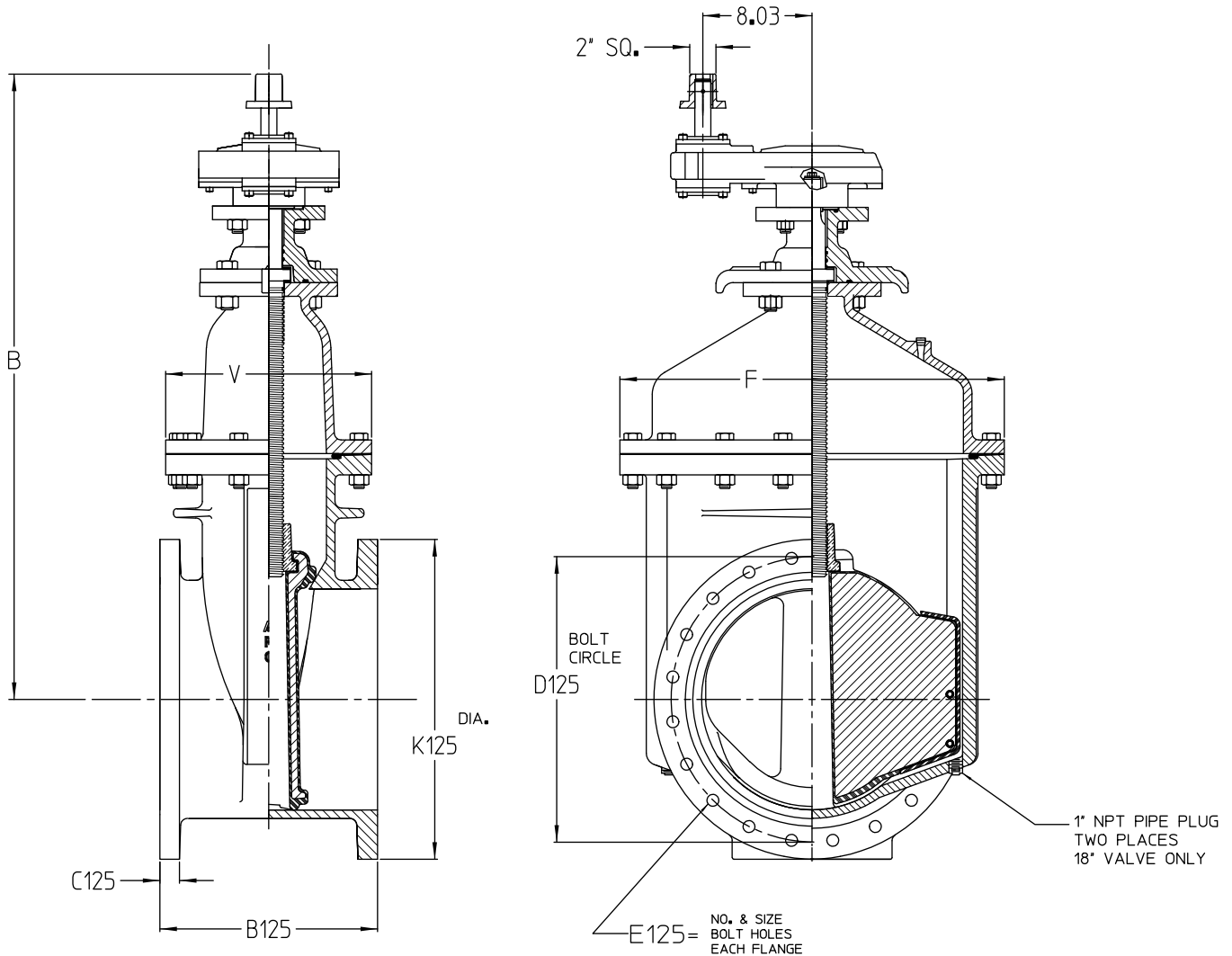
## 2500 SPECIFICATIONS

Valves 2 in.—66in. shall be resilient wedge type rated for 250 psig cold water working pressure. All ferrous components shall be ductile iron. All NRS valves, in applicable configurations, 2-1/2in.—24in. in diameter shall be Listed by Underwriters Laboratories, Inc. All OS&Y valves in applicable configurations, 3in.—24in. in diameter shall be Listed by Underwriters Laboratories, Inc. Valves 3 in.—54 in. shall be in full compliance with ANSI/AWWA C515. The words "DI" or "Ductile Iron" shall be cast on the valve. The wedge shall be ductile iron encapsulated with EPDM rubber and provided with male type guides and polymer guide covers. Bolting shall be Type 304 stainless steel and shall be provided with hexagonal heads with dimensions conforming to ANSI B18.2.1. Metric size, socket head cap screws therefore are not allowed.

- Operating nut shall be constructed of ductile iron and shall have four flats at stem connection to assure even input torque to the stem.
- All gaskets shall be pressure energized O-rings.
- Stem shall be sealed by three O-rings. The top two O-rings shall be replaceable with valve fully open and while subject to full rated working pressure. O-rings set in a cartridge shall not be allowed.
- Valve shall have thrust washers located with (1) above and (1) below the thrust collar to assure trouble-free operation of the valve.
- All internal and external surfaces of the valve body and bonnet shall have a fusion-bonded epoxy coating, complying with ANSI/AWWA C550, applied electrostatically prior to assembly.
- Valves shall be certified to NSF/ANSI Standard 61 and NSF/ANSI 372.
- Valves shall be AMERICAN Flow Control's **Series 2500 or 2500-1 Resilient Wedge Gate Valve**.

# AMERICAN Flow Control Submittal Information

## 14" - 18" SERIES 2500 RESILIENT WEDGE GATE VALVE NRS CLASS 125 FLANGED ENDS WITH SPUR GEAR ACTUATOR (FLG X FLG)



91-21397

Size	14"	16"	18"
B	42.00	45.50	51.38
B125	15.00	16.00	17.00
C125	1.38	1.44	1.56
D125	18.75	21.25	22.75
E125	12 - 1.13	16 - 1.13	16 - 1.25
F	26.00	28.25	32.00
K125	21.00	23.50	25.00
V	13.50	15.13	15.00
Turns to Open	88	100	112
Weight	822 lbs.	996 lbs.	1232 lbs.



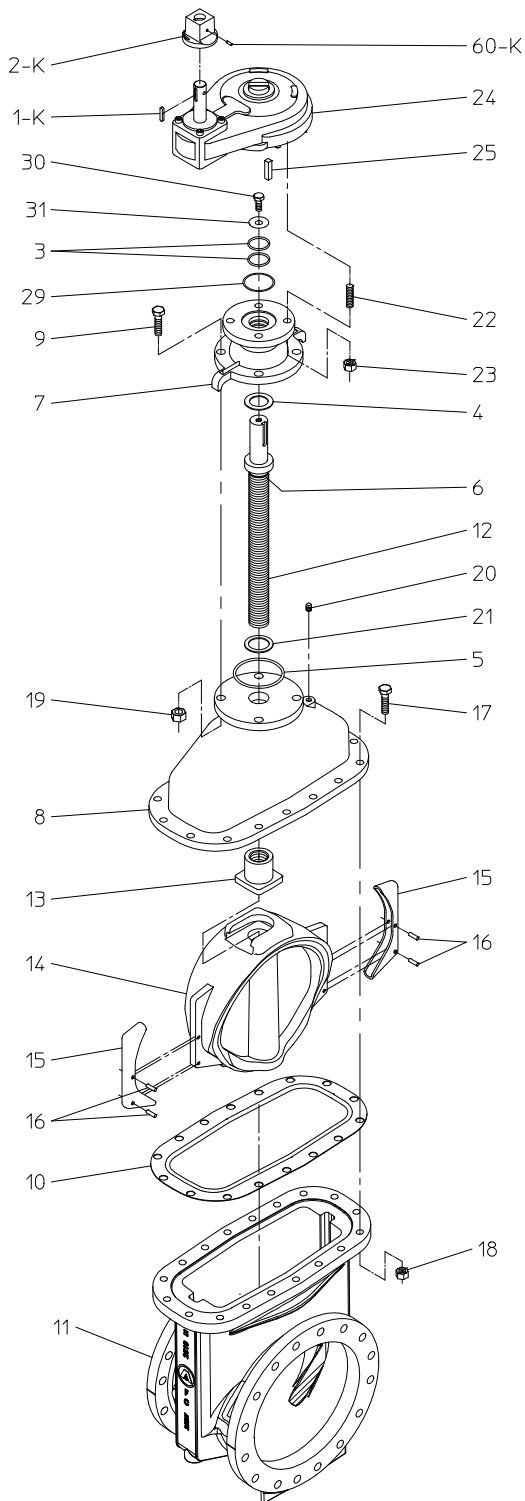
**AMERICAN**  
FLOW CONTROL

**THE RIGHT WAY**

AMERICAN Flow Control  
P.O. Box 2727  
Birmingham, Al. 35202-2727  
Phone: 800-326-8051  
Fax: 800-610-3569  
Email: afcsales@american-usa.com

Waterous Company  
125 Hardman Avenue South  
South St. Paul, Mn. 55075-1191  
Phone: 888-266-3686  
Fax: 800-601-2809  
Email: afcsales@american-usa.com

[WWW.AMERICAN-USA.COM](http://WWW.AMERICAN-USA.COM)



IL1506-3A

Construction shown is typical of the 16-inch size with flange joint end connections and is illustrative only. Construction of other sizes and end connection types vary slightly. See elsewhere on this drawing for specific details.

#### NOTES:

1. Bolt patterns of class 125 flanged ends are in accordance with ANSI/AWWA C110/A21.10 (ASME B16.1 class 125).
2. Fusion-bonded epoxy-coated in accordance with AWWA C550.
3. Certified to NSF/ANSI 61 & 372.
4. Meets requirements of AWWA C515 with rated working pressure of 250 psig.

Ref. No.	Description	Material
1-K	Key for operating nut	Steel
2-K	Operating Nut	Ductile Iron ASTM A536
3	O-Ring	Rubber
4	Upper Thrust Washer	Delrin
5	Stuffing Box Gasket	Rubber O-Ring
6	O-Ring	Rubber
7	Stuffing Box	Ductile Iron ASTM A536
8	Bonnet	Ductile Iron ASTM A536
9	Hex Head Bolt	304 Stainless Steel
10	Throat Flange Gasket	Rubber
11	Valve Body	Ductile Iron ASTM A536
12	Stem	Manganese Bronze, ASTM B763, UNS C86700
13	Wedge Nut	Silicon Bronze, ASTM B584, UNS C87600
14	Resilient Wedge	EPDM Rubber Encapsulated Ductile Iron ASTM A536
15	Wedge Cover	Acetal Polymer
16	Wedge Cover Pin	Acetal Polymer
17	Hex Head Bolt	304 Stainless Steel
18	Hex Nut	304 Stainless Steel
19	Hex Nut	304 Stainless Steel
20	Pipe Plug	Stainless Steel
21	Lower Thrust Washer	Delrin
22	Stud	304 Stainless Steel
23	Hex Nut	304 Stainless Steel
24	Spur Gear Actuator	Rotork IS-5 (2:1)
25	Key	Hardened Steel
29	Actuator Gasket	Rubber O-Ring
30	Hex Head Bolt	Zinc Plated Steel
31	Washer	Steel
60-K	Pin for Operating Nut	Stainless Steel

#### OPTIONAL MATERIALS ARE AS FOLLOWS

BOLTS and NUTS: 316 Stainless Steel

STEM: Cast NDZ-S Bronze, ASTM B763, UNS C99500

STEM: 304 Stainless Steel

STEM: 316 Stainless Steel

Open Direction ☐ Left(C.C.W.) ☐ Right(C.W.)



**AMERICAN**  
FLOW CONTROL

**THE RIGHT WAY**

AMERICAN Flow Control  
P.O. Box 2727  
Birmingham, Al. 35202-2727  
Phone: 800-326-8051  
Fax: 800-610-3569  
Email: [afcsales@american-usa.com](mailto:afcsales@american-usa.com)

Waterous Company  
125 Hardman Avenue South  
South St. Paul, Mn. 55075-1191  
Phone: 888-266-3686  
Fax: 800-601-2809  
Email: [afcsales@american-usa.com](mailto:afcsales@american-usa.com)

[WWW.AMERICAN-USA.COM](http://WWW.AMERICAN-USA.COM)