

Enclosure Selection-By Pipe Size

If you only know your pipe size because the valve manufacturer and type has yet to be determined, the chart below can help you select a Hot Box® Enclosure. Please note that the Hot Box Select-A-Box tool can potentially provide a better fit, and one of the Hot Box Select Six can cover a wider range of pipe sizes and valves types.

Backflow Preventer (Straight) Sizing Guide by pipe size								
		Standard HotBox Enclosure 12" bottom clearance		Standard HotBox Enclosure 18" bottom clearance		Standard HotBox Enclosure 30" centerline		
Pipe Size		Quarter Turn		Quarter Turn		Quarter Turn		Excluded bfp's
0.75	Part No. Model No.	HD/HF013027023 DF1/HB1		HD/HF013027035 DF1T/HB1T		HD/HF013027035 DF1T/HB1T		
1	Part No. Model No.	HD/HF013027023 DF1/HB1		HD/HF013027035 DF1T/HB1T		HD/HF013039036 DF2T/HB1T		
1.25-1.50	Part No. Model No.	HD/HF013039028 DF2/HB2		HD/HF013039036 DF2T/HB2T		HD/HF013039036 DF2T/HB2T		
2	Part No. Model No.	HD/HF013039028 DF2/HB2		HD/HF013039036 DF2T/HB2T		HD/HF013039036 DF2T/HB2T		
Pipe Size		NRS		OS&Y		NRS		OS&Y
2.5	Part No. Model No.	HD/HE/HF026070045 DF3N/EZ3/HB3N	HD/HE/HF026070045 DF3N/EZ3/HB3N	HD/HE/HF026070045 DF3N/EZ3/HB3N	HA/HD/HF026070055 HB3E-AL/DF3E/HB3E	HD/HE/HF026070045 DF3N/EZ3/HB3N	HA/HD/HF026070055 HB3E-AL/DF3E/HB3E	909RPDA (LA045072052)
3	Part No. Model No.	HD/HE/HF026070045 DF3N/EZ3/HB3N	HD/HE/HF026070045 DF3N/EZ3/HB3N	HD/HE/HF026070045 DF3N/EZ3/HB3N	HA/HD/HF026070055 HB3E-AL/DF3E/HB3E	HD/HE/HF026070045 DF3N/EZ3/HB3N	HA/HD/HF026070055 HB3E-AL/DF3E/HB3E	909RPDA (LA045072052)
4	Part No. Model No.	HA/HD032090050 HB4N/DF4N	HA/HD032090057 HB4E/DF4E	HA/HD032090050 HB4N/DF4N	HA/HD032090057 HB4E/DF4E	HA/HD032090057 HB4E/DF4E	HA/HD032090057 HB4E/DF4E	909RPDA (HA051096067) 350AST OSY (HA045072060)
6	Part No. Model No.	HA036105053 HB6N	HA036105053 HB6N	HA036105053 HB6N	HA036105064 HB6E	HA036105053 HB6N	HA036105064 HB6E	
8	Part No. Model No.	HA040118058 HB8N	HA040118074 HB8E	HA040118058 HB8N	HA040118074 HB8E	HA040118058 HB8N	HA040118074 HB8E	909RPDA (HA054153075)
10	Part No. Model No.	HA042142065 HB10N	HA042142085 HB10E	HA042142085 HB10E	HA042142085 HB10E	HA042142085 HB10E	HA042142085 HB10E	

Backflow Preventer (N pattern) Sizing Guide by pipe size								
		Standard HotBox Enclosure 12" bottom clearance		Standard HotBox Enclosure 18" bottom clearance		Standard HotBox Enclosure 30" centerline		
Pipe Size		NRS		OS&Y		NRS		OS&Y
2.5	Part No. Model No.	HD/HM041041045 DF4FE/HB4FEM	HD/HM041041045 DF4FE/HB4FEM	HD/HM041041045 DF4FE/HB4FEM	HD/HM041041045 DF4FE/HB4FEM	n/a	n/a	
3	Part No. Model No.	HD/HM041041045 DF4FE/HB4FEM	HD/HM041041045 DF4FE/HB4FEM	HD/HM041041045 DF4FE/HB4FEM	HD/HM041041045 DF4FE/HB4FEM	n/a	n/a	
4	Part No. Model No.	HD/HM041041045 DF4FE/HB4FEM	HD/HM041041045 DF4FE/HB4FEM	HA/HD/HM047047049 DF6FE/HB6FEM	HA/HD/HM047047049 DF6FE/HB6FEM	n/a	n/a	
6	Part No. Model No.	HD/HM053053056 DF8FE/HB8FEM	HD/HM053053056 DF8FE/HB8FEM	HD/HM053053056 DF8FE/HB8FEM	HD/HM053053056 DF8FE/HB8FEM	n/a	n/a	
8	Part No. Model No.	HA045072060 HB8000ANT	HA065072060 HB8000AET	HA051096067 HB8FN-DT	HA051096067 HB8FN-DT	n/a	n/a	
10	Part No. Model No.	HA045082062 HB6FN-DT	HA071105064 HB6E-D	HA071105064 HB6E-D	HA071105064 HB6E-D	n/a	n/a	450OSY (HA083123074) 475OSY (HA083123074)

The above enclosures are based from the largest backflow device for each pipe size unless listed in the "Excluded bfp's" column. Sizing verification is ultimately the responsibility of the customer. For the unheated version replace the Hotbox part number prefix "H" with an "L".

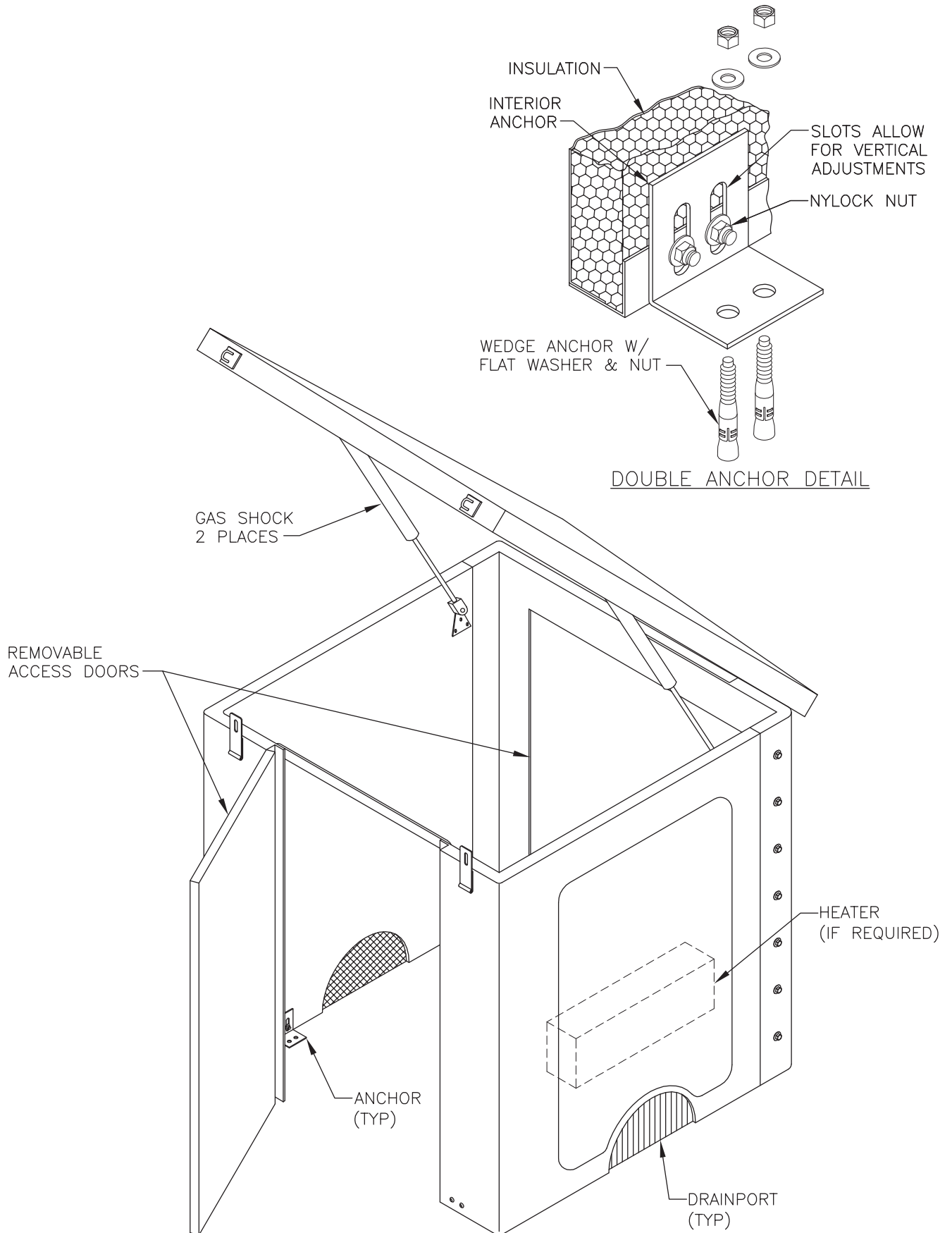
Part numbering system: **Prefix x Width x Length x Height**

Prefix Definition: (digits 1 & 2)
 HA Heated Sectional Aluminum
 HD Heated Durafold Aluminum
 HE Heated Drop Over Fiberglass
 HF Heated Fliptop Fiberglass
 HM Heated Designer Series
 HP Heated Polyethylene drop over
 LA Unheated Sectional Aluminum
 LD Unheated Durafold Aluminum
 LE Unheated Drop Over Fiberglass
 LF Unheated Fliptop Fiberglass
 LM Unheated Designer Series
 LP Unheated Polyethylene drop over

Note: The enclosure recommendations are based on the largest backflow device for each pipe size unless listed in the "Excluded bfp's" column. Sizing verification is ultimately the responsibility of the customer. Customers are also responsible for verifying the clearances meet all local code requirements.



Designer Series™ Enclosures



Flip-Top Fiberglass Enclosures

- **Easy Maintenance Access** - Flip top lid design provides quick access.
- **Weatherproof & Vandal Resistance** - Overlapping lid seam design helps keep vandals and mother nature out. Also includes a lockable top and steel anchors (padlocks are not included).
- **Durable & Corrosion Resistant** - Reinforced fiberglass with a smooth, UV resistant gelcoat provides a corrosion proof finish that both looks good and stands up to the elements.
- **Superior Freeze Protection** - Wall-mounted heater or self-regulating heat trace tape provides freeze protection.
- **Peace of Mind** - ASSE 1060 certification ensures that requirements for structural strength, drainage capacity, material construction, equipment access, and functional design are met.



Note: Standard fiberglass color is beige (optional colors are available-see page 49 for details). Also available as uninsulated enclosures (see page 35).

For unheated units, replace the “H” in the part# with an “L”. Pad size=inside Dimensions + 12”.

Catalog Part Number	Model Number	Inside Width (in)	Inside Length (in)	Inside Height (in)	Heater(s)	Glass Pad	Weight #
HF011019022	HB.75	10	18	23	30W	GG019027005	28
✓ HF013027023	HB1	13	26	23	60W	GG021035005	32
HF013027035	HB1T	13	26	36	60W	GG021035005	57
HF013039028	HB2	13	38	29	90W	GG021047005	54
HF013039036	HB2T	12	38	36	90W	GG021047005	65
HF013047028	HB2S	10	44	28	90W	N/A	64
HF013047036	HB2ST	13	47	36	90W	N/A	98
HF021033025	HB1.5	21	33	25	60W	GG029042005	55
HF025039028	HB2-D	25	39	28	(2) 90W	N/A	124
HF025039036	HB2-DT	25	39	36	(2) 90W	N/A	148
HF025047028	HB2-DS	25	47	28	(2) 90W	N/A	139
HF025047036	HB2-DST	25	47	36	(2) 90W	N/A	168
HF026070045	HB3N	27	70	46	1000W	N/A	241
HF026070055	HB3E	26	70	55	1500W	N/A	322
HF026083045	HB3NS	26	83	45	1500W	N/A	308
HF026083055	HB3ES	26	83	55	1500W	N/A	374
HLO35045035	HB3000	35	44	35	1000W	N/A	170
HLO44053044	HB4000	44	53	45	1000W	N/A	251
HLO52061052	HB5000	52	61	51	1500W	N/A	320

For unheated units, replace the “H” in the part# with an “L”. Pad size=inside Dimensions + 12”.