

PARTS AND ACCESSORIES

MODEL NUMBER	PART NUMBER	DESCRIPTION
--------------	-------------	-------------

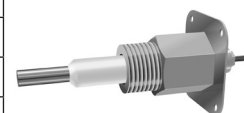
MANIFOLD FITTINGS

FOEM-1	45-300	1 1/2" x 1 1/2" x 3/4" C.I. Tee 160 PSI Max.
FOEM-2	45-304	1" x 1" x 3/4" C.I. Tee 160 PSI Max.
FOEM-3	45-305	1 1/4" x 1 1/4" x 3/4" C.I. Tee 160 PSI Max.
1" H.P. Tee	45-322	1" x 1" x 3/4" High Pressure Tee (250 PSI Max.) for use with Model EL1214-SV probe
1214C-1	45-301	1" x 1" x (3) 3/4" tapings for probe, sightglass & tri-cocks
1214C-2	45-302	1" x 1" x 3/4" C.I. Tee 250 PSI Max.
250C	45-303	1" x 1" x (3) 3/4" probe tapings. 250 PSI Max.
711C	45-309	(2) 3/4" probe tapings C.I. 35 PSI Max.
711C with fittings	45-310	711C casting as described above w/ quick hook-up fittings for gauge glass attachment.



PROBES

EL1150	45-210	3/4" NPT, 115/16" inside dimension. For 1150 Series controls.
EL1214	45-214	3/4" NPT, 27/8" inside dimension. Standard ceramic.
EL1214-SV	45-215	3/4" NPT, 21/16" inside dimension. Short ceramic.
EL1214-P	45-226	3/4" NPT, 27/8" inside dimension. Standard ceramic. Long nut (111/16").
EL1214-LSV	45-227	3/4" NPT, 21/16" inside dimension. Short ceramic.
EL1214-R	45-224	EL1214 probe in J-box with metal cover.
EL1220	45-220	1/2" NPT, 27/8" inside dimension. Standard ceramic.
EL1220-R	45-223	EL1220 probe in J-box with metal cover.
EL1220-SV	45-221	1/2" NPT, 21/16" inside dimension. Short ceramic.



COMMERCIAL/INDUSTRIAL CONTROLS

• Control box only • For field replacement • Probes and manifolds not included

711-CO	45-713	Low water cut-off. 120 VAC, 60 Hz. Supply Voltage.
724-CO	45-726	Low water cut-off. 24 VAC, 60 Hz. Supply Voltage.
250-CO	45-260	Low water cut-off. 120 VAC, 60 Hz. Supply Voltage.

PARTS

45-531-54	45-531-54	Standard wire harness for Model 1100 LWCO
45-347	45-347	Wire harness for connecting Model 1100 to Burnham PVGA, PVCGA, Series 2, New Yorker CG-D
45-348	45-348	Wire harness for connecting Model 1100 to UTC Boiler Control Module
45-349	45-349	Wire harness for connecting Model 1100 to Lochinvar Knight and Solution, Weil-McLain Ultra
45-350	45-350	Wire harness for connecting Model 1100 to Burnham CHG, SCG, PVG, Crown Bimini
45-353	45-353	Wire harness for connecting Models 1100 and 1100M to vent damper plug on boiler control modules
KUP-11A15	45-337	Plug-in relay, DPDT for 250,967,727,787 controls
KUP-14A15	45-338	Plug-in relay, 3PDT for 711,724 controls
45-024-66	45-343	24 VAC Feed Valve Assembly
45-120-66	45-344	120 VAC Feed Valve Assembly
45-725	45-725	24 VAC Feed Valve Assembly in J-Box (for 724 Series Control)
45-715	45-715	120 VAC Feed Valve Assembly in J-Box (for 711 Series Control)

**HYDROLEVEL
COMPANY**

126 BAILEY ROAD, NORTH HAVEN, CONNECTICUT 06473 www.hydrolevel.com