



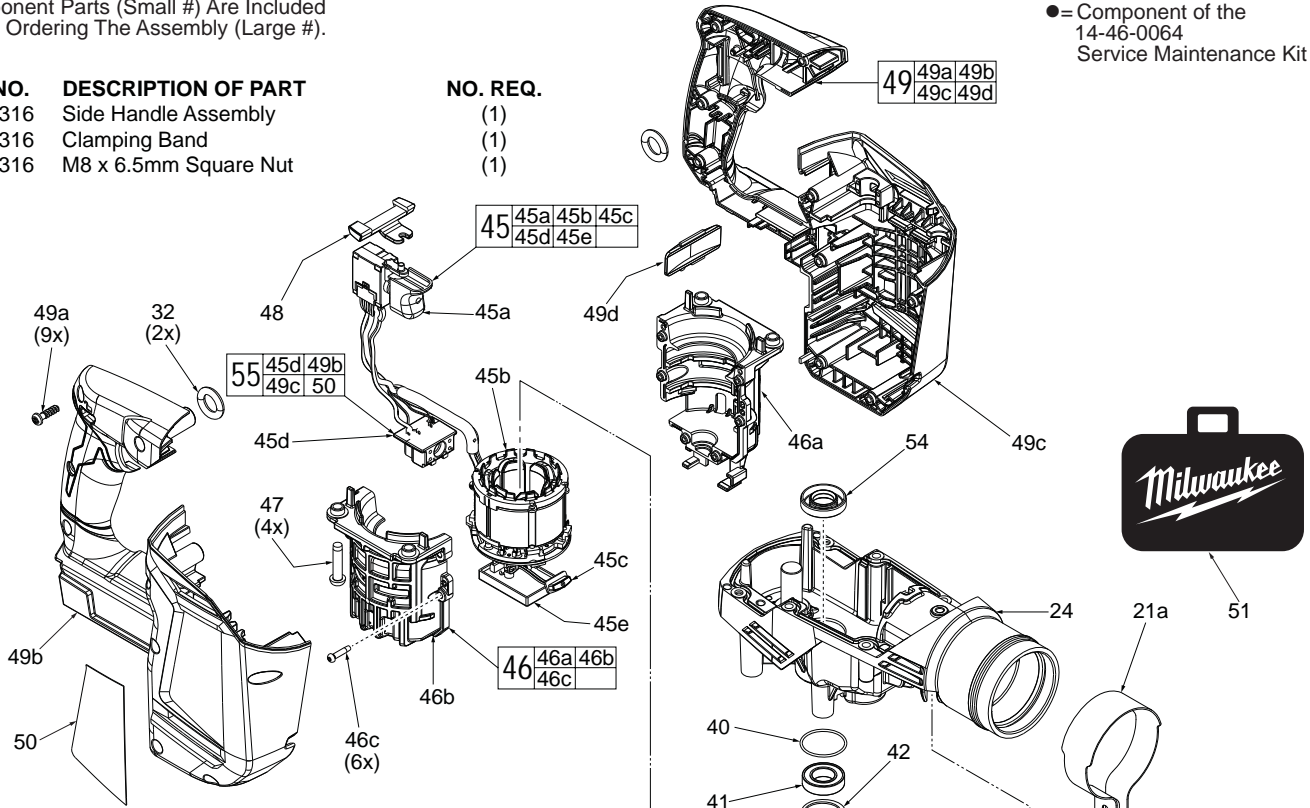
SERVICE PARTS LIST

BULLETIN NO.
54-24-2760

SPECIFY CATALOG NO. AND SERIAL NO. WHEN ORDERING PARTS		REVISED BULLETIN	DATE
M18™ FUEL™ 5Kg SDS-Max Rotary Hammer			Nov. 2015
CATALOG NO.	2717-20	WIRING INSTRUCTION	
	STARTING SERIAL NO.	SEE PAGE 4	
	G89A		

EXAMPLE:
Component Parts (Small #) Are Included
When Ordering The Assembly (Large #).

FIG.	PART NO.	DESCRIPTION OF PART	NO. REQ.
21	43-62-5316	Side Handle Assembly	(1)
21a	42-68-5316	Clamping Band	(1)
21b	06-54-5316	M8 x 6.5mm Square Nut	(1)



● = Component of the
14-46-0064
Service Maintenance Kit

FIG.	PART NO.	DESCRIPTION OF PART	NO. REQ.
21c	44-40-5316	Clamp Holder	(1)
21d	43-98-5316	Side Handle	(1)
22a	05-78-5316	M4 x 14mm Pan Hd. Taptite T-20	(1)
23	42-36-0019	Belly Shroud	(1)
24	14-29-0028	Gearcase Assembly	(1)
32	34-40-5308	● O-Ring	(2)
40	34-40-5320	O-Ring	(1)
41	02-04-0009	Ball Bearing	(1)
42	45-88-5313	Snap Ring	(1)
43	16-10-0045	Service Rotor Assembly	(1)
43a	-----	Retaining Ring	(1)
43b	-----	Rotor	(1)
43c	02-04-5382	Ball Bearing	(1)
45	14-20-0235	Electronics Assembly	(1)
45a	-----	On-Off Switch	(1)
45b	-----	Stator Assembly	(1)
45c	-----	LED Assembly	(1)
45d	-----	Terminal Block (See Item 55)	(1)
45e	-----	PCBA	(1)
46	31-44-0046	Motor Housing Insulator Assembly	(1)
46a	-----	Motor Housing Insulator Halve - Left	(1)
46b	-----	Motor Housing Insulator Halve - Right	(1)
46c	06-82-2025	M3.5 x 16mm Pan Hd. ST T-10 Screw	(6)
47	06-82-0026	M6.0 x 27mm Pan Hd. Tapt. T-30 Screw	(4)
48	42-42-0019	Locking Shuttle	(1)
49	31-44-0068	Housing/FUEL™ Logo Assembly	(1)
49a	05-78-5311	M5 x 18mm Pan Hd. ST T-20 Screw	(9)
49b	-----	Housing Halve - Right (Cover)	(1)
49c	-----	Housing Halve - Left (Support)	(1)
49d	-----	FUEL™ Logo Plate	(1)
50	12-20-0072	Service Nameplate	(1)
51	42-55-2717	Blow Molded Carrying case	(1)
54	45-06-0052	Rotary Seal	(1)
55	22-56-0014	Terminal Block/Housing Service Kit	(1)

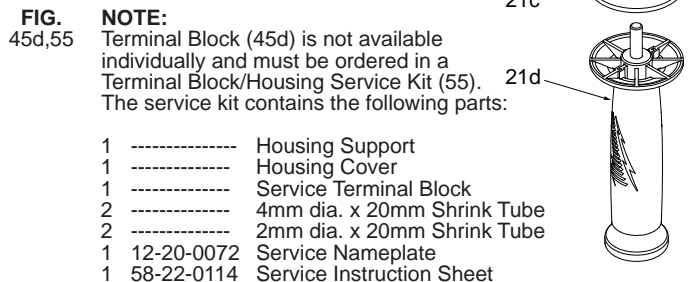
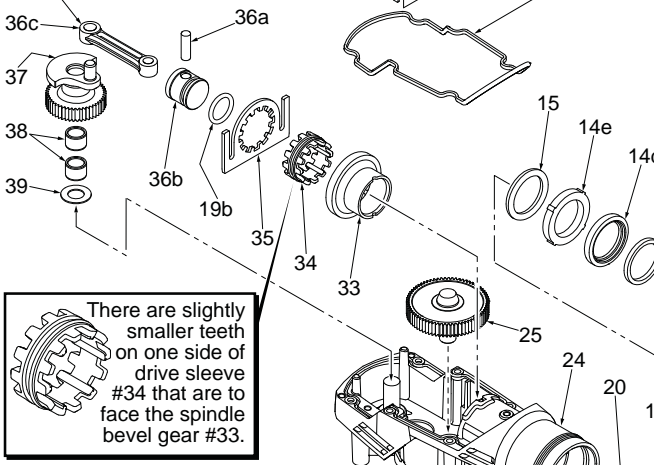
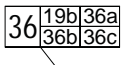
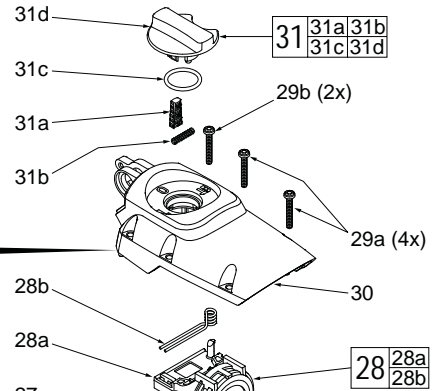
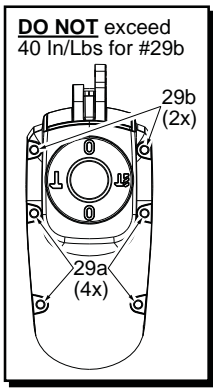


FIG. 45d,55 NOTE:
Terminal Block (45d) is not available individually and must be ordered in a Terminal Block/Housing Service Kit (55). The service kit contains the following parts:

- 1 ----- Housing Support
- 1 ----- Housing Cover
- 1 ----- Service Terminal Block
- 2 ----- 4mm dia. x 20mm Shrink Tube
- 2 ----- 2mm dia. x 20mm Shrink Tube
- 1 12-20-0072 Service Nameplate
- 1 58-22-0114 Service Instruction Sheet

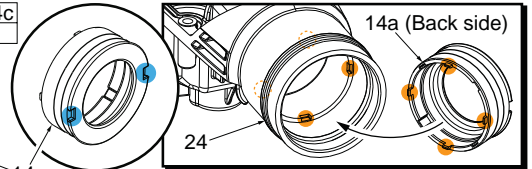
It is recommended that this kit be installed at a Milwaukee Authorized Service Station or Factory Service Center.

• See page 2 for the exploded view and parts listing of the mechanical portion of the tool and service fixtures.
• See page 3 for lubrication instructions, torques chart, maintenance instructions and service kits.
• See Page 4 for wiring instructions.



There are slightly smaller teeth on one side of drive sleeve #34 that are to face the spindle bevel gear #33.

FIG.	PART NO.	DESCRIPTION OF PART	NO. REQ.
19	45-56-5316	Striker Assembly	(1)
19a	45-56-5320	Striker	(1)
19b	34-40-5310	● O-Ring	(2)
20	45-88-5314	Washer	(1)
22b	05-78-5316	M4 x 14mm Pan Hd. Taptite T-20	(2)
24	14-29-0028	Gearcase Assembly	(1)
25	14-08-0055	Clutch Assembly	(1)
26	45-06-5316	● Rubber Gasket	(1)
27	44-66-5313	Selector Bracket Clamp Plate	(1)
28	14-46-5312	Fork Assembly	(1)
28a	-----	Fork	(1)
28b	-----	Fork Assembly Spring	(1)
29a	05-78-5315	M5 x 33mm Pan Hd. Taptite T-25	(4)
29b	05-78-5315	M5 x 33mm Pan Hd. Taptite T-25	(2)
30	31-12-0013	Gearcase Cover	(1)
31	23-66-5316	Selector Knob Assembly	(1)
31a	44-62-0710	Rubber Plug	(1)
31b	40-50-5320	Spring	(1)
31c	34-40-5309	O-Ring	(1)
31d	43-98-5321	Selector Knob	(1)
33	32-75-5316	Spindle Bevel Gear	(1)
34	45-22-5316	Drive Sleeve	(1)
35	44-66-5312	Locking Plate	(1)
36	14-09-5316	Piston and Connecting Rod Assembly	(1)



Be sure to orient front notches of bearing shield #14a at the 12:00/6:00 position or at the 9:00/3:00 position prior to installing in gearcase #24. Doing so will allow tabs in rear of bearing shield to seat in corresponding notches in gear case cavity. This must be done to allow for proper seating of retaining ring #13.

● = Component of the 14-46-0064 Service Maintenance Kit

FIG.	PART NO.	DESCRIPTION OF PART	NO. REQ.
1	45-12-5316	● Rubber Dust Shield	(1)
2	45-22-5317	Front Latch Sleeve	(1)
3	34-60-5316	● Retaining Ring	(1)
4	45-88-5316	Washer	(1)
5	34-40-5316	● Spindle O-Ring	(2)
6	45-88-5321	Washer	(1)
7	45-22-5319	Sliding Collar	(1)
8	45-22-5321	Locking Sleeve	(1)
9	45-88-5371	Washer	(1)
10	44-66-5316	Front Spring Retainer	(1)
11	40-50-5318	Spring	(1)
12	44-66-5314	Rear Spring Retainer	(1)
13	34-40-5315	Retaining Ring	(1)
14	14-46-5316	Bearing Shield Assembly	(1)
14a	-----	Bearing Shield	(1)
14b	34-40-5321	● O-Ring	(2)
14c	45-06-5170	● Felt Seal	(1)
14d	45-06-5180	● Rotary Seal	(1)
14e	02-50-5316	Bearing Ring	(1)
15	45-88-5323	● O-Ring	(1)
16	44-20-5316	Key	(2)
17	38-50-5316	SDS-Max Spindle Assembly	(1)
17a	44-82-5317	SDS-Max Spindle	(1)
17b	43-06-5317	Brake Ring	(1)
17c	45-88-5325	Rebound Ring	(2)
17d	34-60-5321	● Back Press Ring	(1)
17e	44-60-5316	Spindle Sleeve Pin	(6)
17f	44-90-5317	Steel Ring	(1)
17g	44-90-5319	● Spring Ring	(1)
17h	38-50-5323	Barrel	(1)
18	42-06-5316	Anvil Assembly	(1)
18a	-----	Anvil	(1)
18b	34-60-5319	● O-Ring	(2)
18c	45-06-5317	● Turcon Seal	(2)

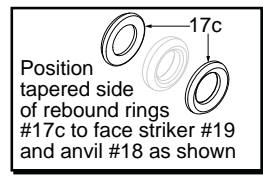
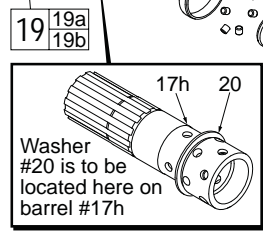
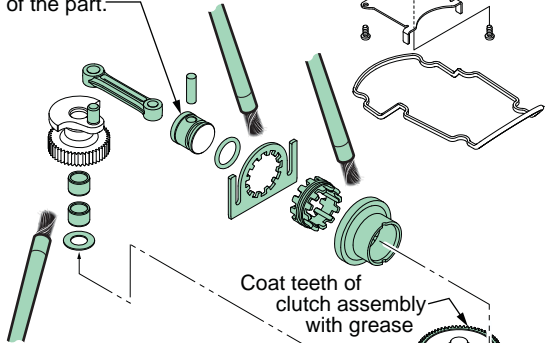


FIG.	PART NO.	DESCRIPTION OF PART	NO. REQ.
36a	-----	Wrist Pin	(1)
36b	-----	Piston	(1)
36c	44-94-0710	Connecting Rod	(1)
37	32-30-0105	Crank Shaft	(1)
38	02-50-5315	Needle Bearing	(2)
39	45-88-5327	Washer	(1)

SERVICE FIXTURES FOR THE 2717-20 and 5317-20 SDS ROTARY HAMMER	
PART NO.	DESCRIPTION OF FIXTURE
61-10-1027	Armature Press Gauge
61-10-1030	Seal Driver
61-10-1032	Seal Expander
61-10-1035	Anvil Insertion Guide
61-10-1037	Seal Driver

Lubrication Note: MILWAUKEE recommends that scheduled maintenance of this Rotary Hammer include lubrication replacement, and replacement of vital O-rings and gaskets at each carbon brush change. Doing so will prolong the life of the hammer by reducing wear to gears and mechanism parts. The carbon brushes and armature commutator in this MILWAUKEE Rotary Hammer are designed and matched for many hours of reliable performance.

Pack the rear of the piston with grease. There is to be no lubrication on the face of the part.

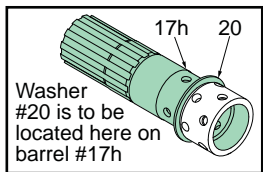


Place 2-3/16 oz. (62g) of grease in the bottom of the gearcase

Place 5/8 oz. (18g) of grease in the rear of the barrel before installing the striker

Coat teeth of clutch assembly with grease

Coat o-ring and o-ring groove prior to installing o-ring.
With o-ring installed, coat around entire side of ram



Coat the inside of the spindle driver prior to assembly

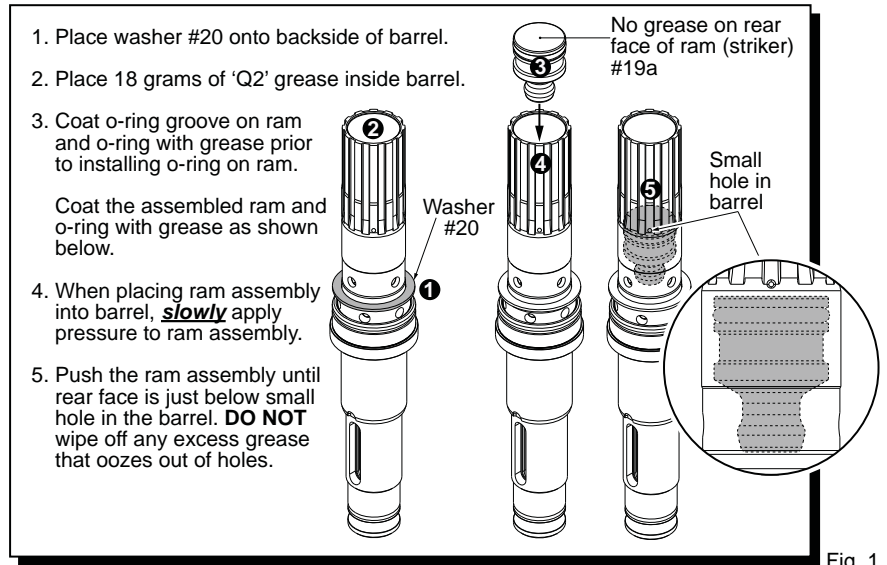


Fig. 1

LUBRICATION NOTES:
Type 'Q2' Grease, No. 49-08-5355 (2.8oz, 80g tube)

Prior to reinstalling, clean gear assemblies with a clean, dry cloth. Lightly coat all individual parts highlighted here with grease. Apply a greater amount of grease to all internal and external gear teeth. Place 18 grams of grease in the rear of the barrel prior to inserting the ram. Place the remaining grease in the bottom of the gearcase.

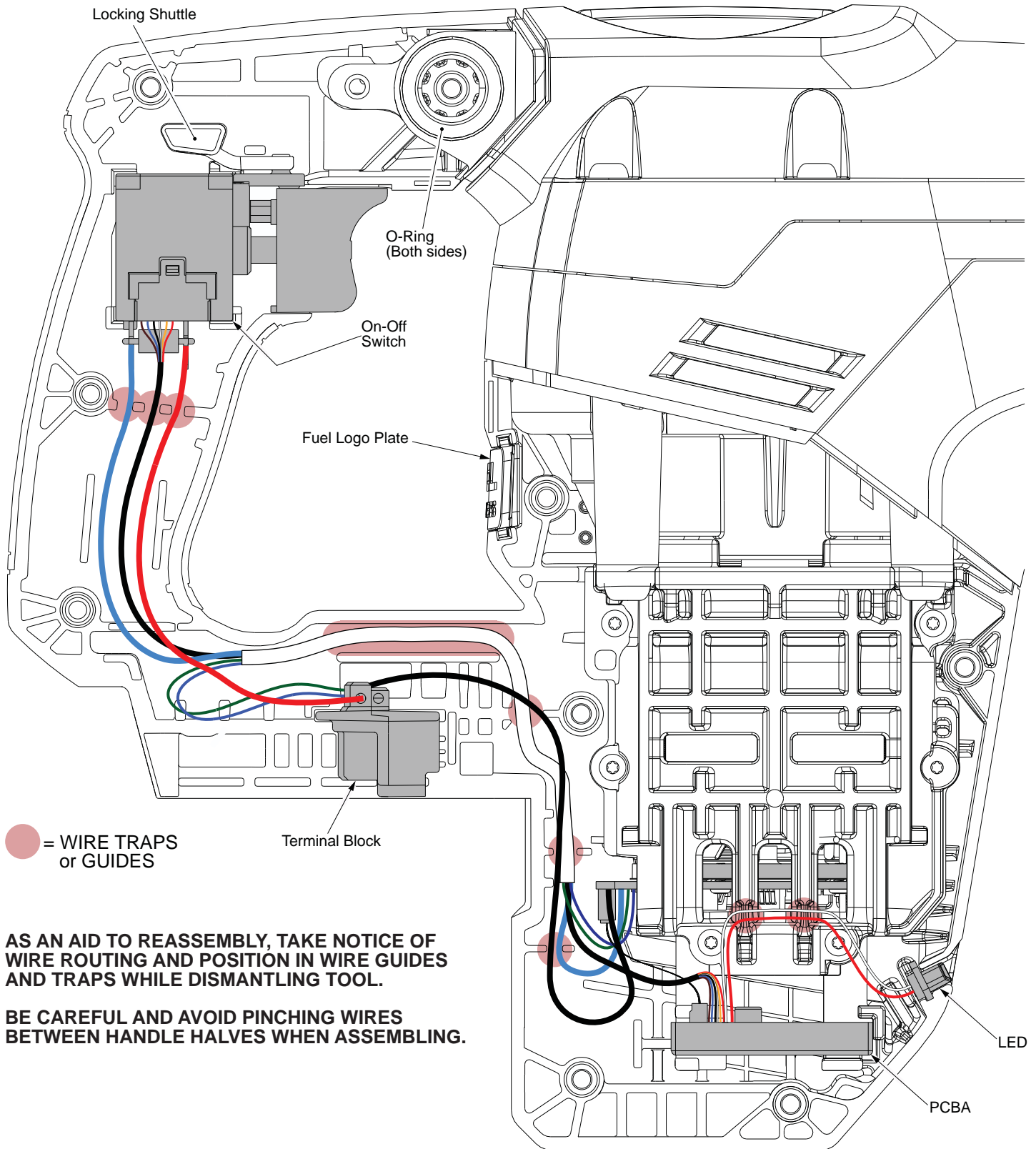
● 14-46-0064 MAINTENANCE SERVICE KIT

THIS KIT CONTAINS:

1	45-12-5316	Rubber Dust Shield
1	34-60-5316	Retaining Ring
2	34-40-5316	Spindle O-Ring
2	34-60-5319	O-Ring
2	34-40-5321	O-Ring
1	45-06-5170	Felt Seal
1	45-06-5180	Rotary Seal
1	45-88-5323	O-Ring
2	45-06-5317	Turcon Seal
1	34-60-5321	Back Press Ring
2	34-40-5310	O-Ring
1	45-06-5316	Rubber Gasket
2	34-40-5308	O-Ring
1	44-90-5319	Spring Ring
1	49-08-5355	'Q2' Grease (2.8oz/80g tube)

FASTENER TORQUE SPECIFICATIONS (IN./LBS.)

FIG. NO.	WHERE USED	SEATING TORQUE	
		In/Lbs	Nm
22a	Belly Shroud - 1x	22	2.5±0.3
22b	Selector Bracket Clamp Plate - 2x	22	2.5±0.3
29a	Gearcase Cover (middle & front positions - 4x)	52	5.9±0.3
29b	Gearcase Cover (rear position - 2x)	38	4.3±0.3
46c	Motor Housing Insulator - 6x	10	1.2±0.2
47	Motor Housing Insulator - 4x	50	5.7±0.3
49a	Housing Halve - Right (Cover) - 9x	25	2.9±0.3



AS AN AID TO REASSEMBLY, TAKE NOTICE OF WIRE ROUTING AND POSITION IN WIRE GUIDES AND TRAPS WHILE DISMANTLING TOOL.

BE CAREFUL AND AVOID PINCHING WIRES BETWEEN HANDLE HALVES WHEN ASSEMBLING.