



# Lustra™

## Commercial Elongated Toilet Seat

### K-4654-A

#### Features

- Kohler plumbing products mean beautiful form as much as reliable function.
- Elongated, open-front toilet seat with support arms and cover.
- Includes an antimicrobial agent that protects the toilet seat from odor- and stain-causing bacteria, mold and mildew. Antimicrobial agent does not protect the user from disease-causing bacteria.

#### Material

- Made of solid polypropylene and is resistant to staining, fading, chipping and peeling.

#### Recommended Products/Accessories

K-23724 Toilet cleaner & disinfectant



#### Codes/Standards

None Applicable

#### KOHLER® One-Year Limited Warranty

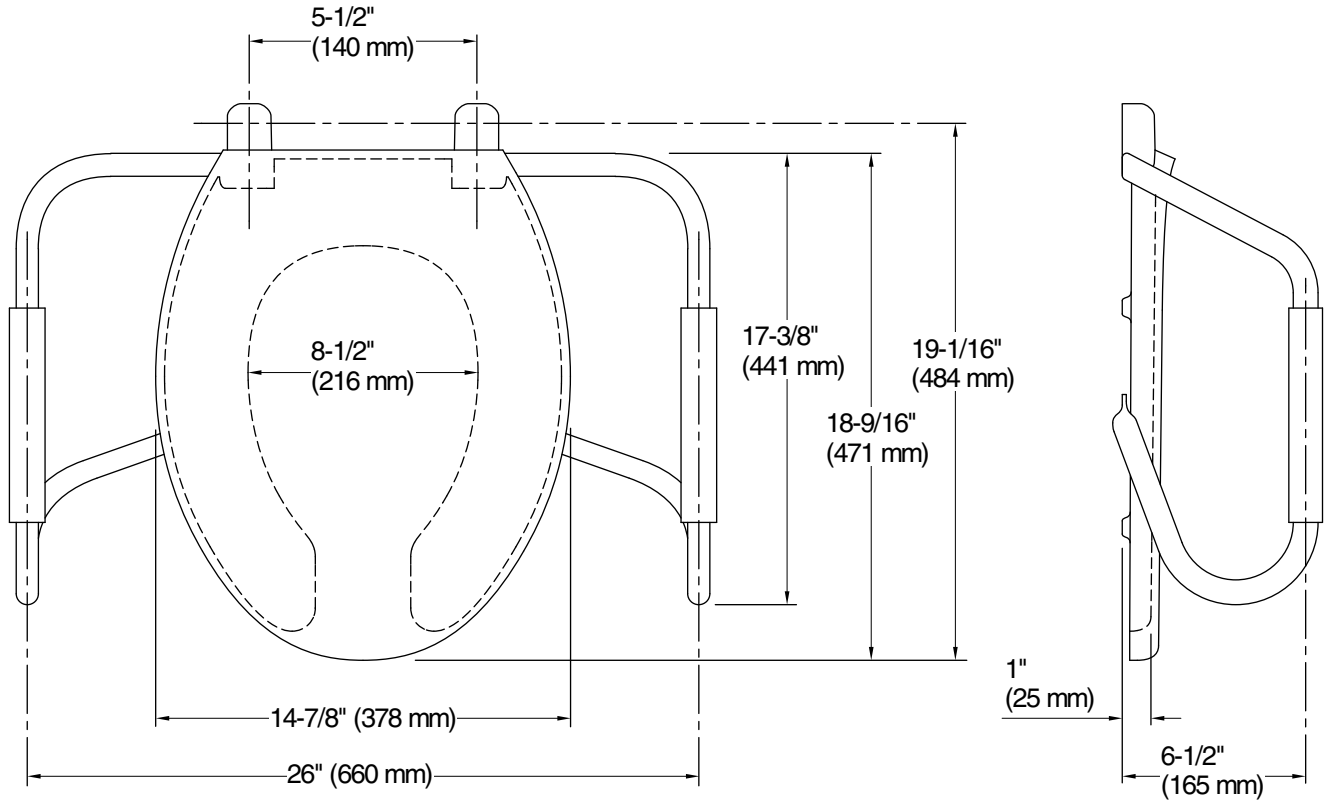
See website for detailed warranty information.

#### Available Colors/Finishes

*Color tiles intended for reference only.*

Color	Code	Description
-------	------	-------------

	0	White
--	---	-------



## Technical Information

All product dimensions are nominal.

Seat shape type: Elongated

Seat front type: Open-front

Seat-mounting holes: 5-1/2" (140 mm)

## Notes

Install this product according to the installation guide.

NOTE: These toilet seats cannot be installed onto one piece toilets that have pre-installed anchor nuts.