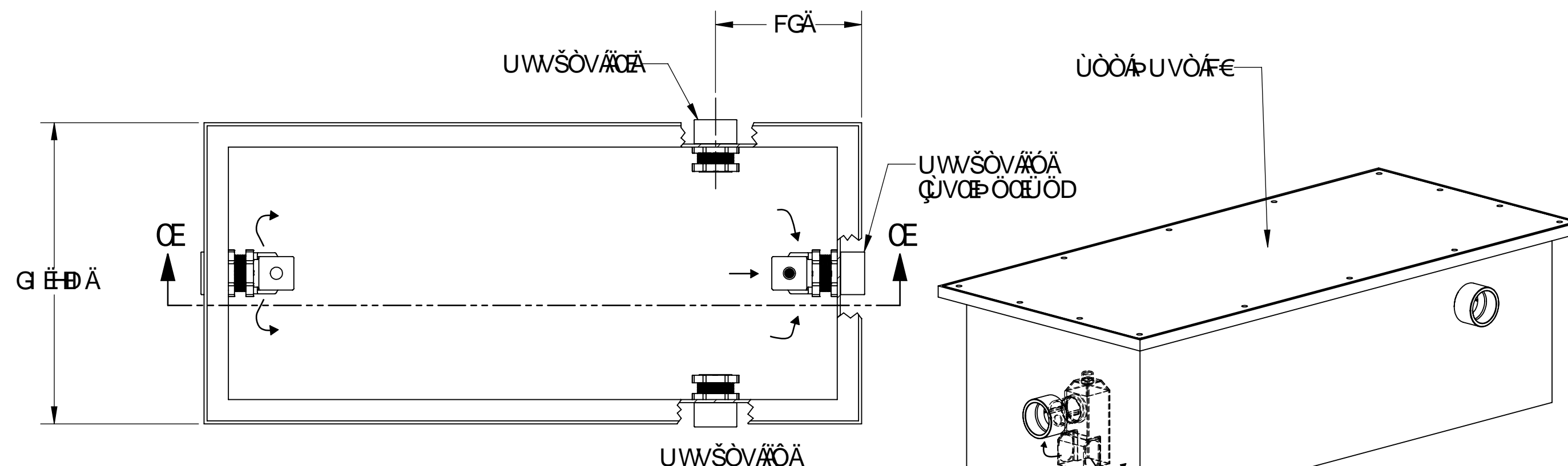
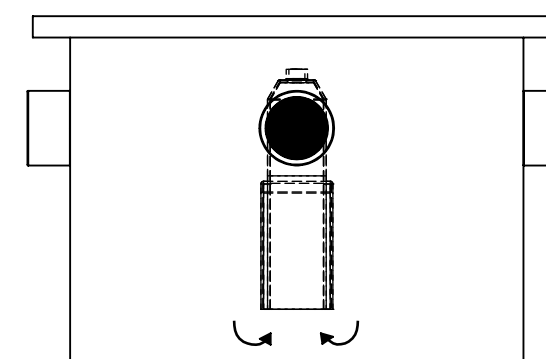
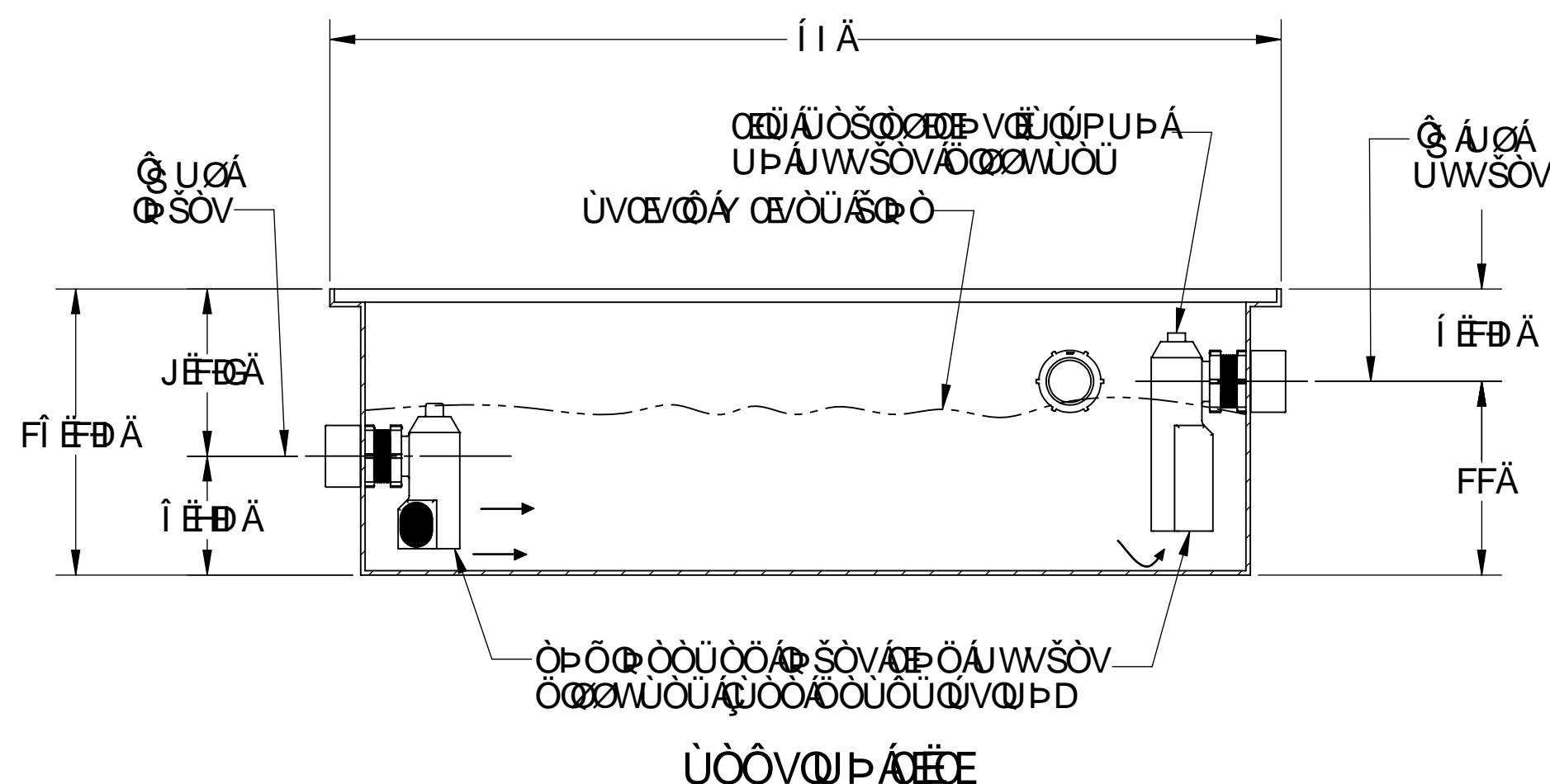


CDH-CBG.
 "T aŕ Á a ^ á @ ^ a a ſ } } ^ & c } •
 " I Á ſ a Á ^ á Á a ^ Á Á a ſ Á a ^ á @ ^ a a ſ } } ^ & c } •



HC DJ 9K
fK #C '7 C J 9Ft



Ò Þ Ö Å Ö Ø

The diagram illustrates five types of pollution control equipment, each represented by a circular icon and a label below it:

- grease interceptors**: Icon showing a single drop of liquid.
- oil separators**: Icon showing a rectangular tank with internal baffles.
- solids interceptors**: Icon showing three stacked spheres.
- chemical waste tanks**: Icon showing a laboratory flask.
- process systems**: Icon showing a complex industrial process with multiple tanks and pipes.

D5 F H' B I A 6 9 F . D5 H; !) \$! @					
DESCRIPTION:			SPECIFICATION SHEET		
VÜŒÚÒÜÀÙÖÒÁUŠỲÒVPÿŞòÞÒ ÔÜŒŸŌÀŦVÔÜŒŮVUÛÄ€ŐTĚFŠŬWŎ ŎŒSSUPŰÊFG ÁÜŒŸŌÁUUWÞŬÂŐŒŸŒŶY			GW Jy f'Df cXi Wg -) \$\$ K ccXY bX'FcUX 9Xk ŴXgj J'YZ? G**%&% HY.; ,\$\$!, &+!+% : U.; ,\$\$!, &+!- **(k k k 'gW Jy fdfcXi Wg'Wca A UX YJb'H Y'I 'G'5		
8 K ; ` 6 M H9I	85 H9. %&/#- # \$ +	F9 J. &'!"%&/#/&	A5 H@ D9		