

## Pipe Fittings NPT Threaded, Ductile Iron

### General Description

The Tyco® Series 800 Threaded Pipe Fittings and California Tees & Elbows are manufactured from ductile iron. They are stronger and more corrosion resistant than cast iron fittings. The additional strength is provided by the ductile properties and by adding magnesium while the iron is being poured into the final cast shape. Although lighter than standard cast iron, the fittings have an added advantage of being less susceptible to cracking due to their added strength.

The Series 800, California, and Figure 719 Threaded Pipe Fittings are a re-designation for the Central Series 800, California, and Figure 719 Threaded Pipe Fittings.

#### WARNINGS

*The Threaded Pipe Fittings described herein must be installed and maintained in compliance with this document, as well as with the applicable standards of the National Fire Protection Association, in addition to the standards of any other authorities having jurisdiction. Failure to do so may impair the performance of these devices.*

*The owner is responsible for maintaining their fire protection system and devices in proper operating condition. The installing contractor or sprinkler manufacturer should be contacted with any questions.*

### Technical Data

#### Approvals:

UL Listed and FM Approved

#### Maximum Working Pressure:

Series 800 and California Fittings:  
250 psi (17,2 bar)

Figure 719 Plug:  
250 psi (17,2 bar)

#### Material:

Series 800 and California Fittings:  
Ductile Iron

Figure 719 Plug:  
Cast Iron

#### Pipe Thread:

NPT per ANSI B1.20.1

### Installation

Apply Teflon<sup>†</sup> tape or high quality pipe joint compound on male pipe threads and tighten two to three turns beyond hand tight.

#### NOTE

*Installers who have not used ductile iron threaded fittings should be instructed that the fittings are stronger than the pipe and overtightening the fitting can create leaks and cause damage to pipe threads. In general, there is about one-half turn difference between cast iron and ductile iron fittings. Apply Teflon tape or high quality pipe joint compound on the male pipe threads and tighten two to three turns beyond hand tight. If an automatic make-on machine is being used, please exercise caution in setting the machine to the proper parameters prior to tightening fittings onto the male pipe threads.*

### Limited Warranty

Products manufactured by Tyco Fire & Building Products (TFBP) are warranted solely to the original Buyer for ten (10) years against defects in material and workmanship when paid for and properly installed and maintained under normal use and service. This warranty will expire ten (10) years from date of shipment by TFBP. No warranty is given for products or components manufactured by companies not affiliated by ownership with TFBP or for products and components which have been subject to misuse, improper installation, corrosion, or which have not been installed, maintained, modified or repaired in accordance with applicable

Standards of the National Fire Protection Association, and/or the standards of any other Authorities Having Jurisdiction. Materials found by TFBP to be defective shall be either repaired or replaced, at TFBP's sole option. TFBP neither assumes, nor authorizes any person to assume for it, any other obligation in connection with the sale of products or parts of products. TFBP shall not be responsible for sprinkler system design errors or inaccurate or incomplete information supplied by Buyer or Buyer's representatives.

In no event shall TFBP be liable, in contract, tort, strict liability or under any other legal theory, for incidental, indirect, special or consequential damages, including but not limited to labor charges, regardless of whether TFBP was informed about the possibility of such damages, and in no event shall TFBP's liability exceed an amount equal to the sales price.

The foregoing warranty is made in lieu of any and all other warranties, express or implied, including warranties of merchantability and fitness for a particular purpose.

This limited warranty sets forth the exclusive remedy for claims based on failure of or defect in products, materials or components, whether the claim is made in contract, tort, strict liability or any other legal theory.

This warranty will apply to the full extent permitted by law. The invalidity, in whole or part, of any portion of this warranty will not affect the remainder.

### Ordering Procedure

When placing an order, indicate the full product name. Please specify the quantity, figure number, wall thickness, and size.

<sup>†</sup> registered trademark of E. I. du Pont de Nemours and Company or its affiliates.

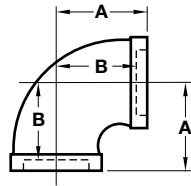


FIGURE 811  
90° ELBOW

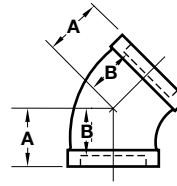


FIGURE 813  
45° ELBOW

Nominal Pipe Size	Figure 811				Figure 813			
	ANSI Inches DN	A Inches (mm)	B Inches (mm)	Approx. Weight Lbs. (kg)	Part Number	A Inches (mm)	B Inches (mm)	Approx. Weight Lbs. (kg)
1/2 DN15	1.13 (28,7)	0.56 (14,2)	0.24 (0,11)	86206	0.88 (22,4)	0.38 (9,7)	0.22 (0,09)	86780
3/4 DN20	1.31 (33,3)	0.75 (19,0)	0.40 (0,18)	86205	1.00 (25,4)	0.44 (11,2)	0.33 (0,15)	86781
1 DN25	1.50 (38,1)	0.81 (20,6)	0.64 (0,29)	86200	1.13 (28,7)	0.81 (20,6)	0.48 (0,21)	86280
1-1/4 DN32	1.75 (44,5)	1.06 (26,9)	0.95 (0,43)	86201	1.31 (33,3)	0.63 (16,0)	0.73 (0,33)	86281
1-1/2 DN40	1.94 (49,3)	1.19 (30,2)	1.24 (0,56)	86202	1.44 (36,6)	0.69 (17,5)	0.93 (0,42)	86282
2 DN50	2.25 (57,1)	1.50 (38,1)	1.74 (0,79)	86203	1.68 (42,7)	0.94 (23,9)	1.55 (0,70)	86283
2-1/2 DN65	2.69 (68,3)	1.56 (39,6)	3.28 (1,49)	86204	1.94 (49,3)	1.00 (25,4)	2.70 (1,22)	86782

**TABLE 1**  
**NOMINAL DIMENSIONS FIGURES 811 & 813**

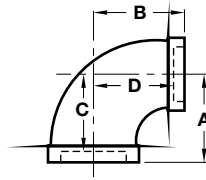


FIGURE 812  
90° REDUCING ELBOW

Nominal Pipe Size	Figure 812					
	ANSI Inches DN	A Inches (mm)	B Inches (mm)	C Inches (mm)	D Inches (mm)	Approx. Weight Lbs. (kg)
3/4 x 1/2 DN20 x 15	1.19 (30,2)	1.19 (30,2)	0.63 (16,0)	0.63 (16,0)	0.33 (0,15)	86342
1 x 1/2 DN25 x 15	1.25 (31,8)	1.38 (35,1)	0.56 (14,2)	0.81 (20,6)	0.44 (0,20)	86210
1 x 3/4 DN25 x 20	1.38 (35,1)	1.44 (36,6)	0.69 (17,5)	0.88 (22,4)	0.53 (0,24)	86211
1-1/4 x 1/2 DN32 x 15	1.31 (33,3)	1.50 (38,1)	0.63 (16,0)	0.94 (23,9)	0.64 (0,29)	86212
1-1/4 x 3/4 DN32 x 20	1.44 (36,6)	1.63 (41,4)	0.75 (19,0)	1.06 (26,9)	0.75 (0,34)	86213
1-1/4 x 1 DN32 x 25	1.56 (39,6)	1.68 (42,7)	0.88 (22,4)	1.00 (25,4)	0.77 (0,35)	86214
1-1/2 x 3/4 DN40 x 20	1.50 (38,1)	1.75 (44,4)	0.75 (19,0)	1.19 (30,2)	0.95 (0,43)	86221
1-1/2 x 1 DN40 x 25	1.63 (41,4)	1.81 (46,0)	0.88 (22,4)	1.13 (28,7)	0.99 (0,45)	86215
1-1/2 x 1-1/4 DN40 x 32	1.81 (46,0)	1.88 (47,8)	1.13 (28,7)	1.19 (30,2)	1.14 (0,52)	86216
2 x 3/4 DN50 x 20	1.63 (41,4)	1.94 (49,3)	0.88 (22,4)	1.38 (35,1)	1.39 (0,63)	86217
2 x 1 DN50 x 25	1.75 (44,4)	2.06 (52,3)	2.00 (50,8)	1.31 (33,3)	1.58 (0,72)	86218
2 x 1-1/2 DN50 x 40	2.00 (50,8)	2.19 (55,6)	1.25 (31,8)	1.44 (36,6)	1.67 (0,76)	86220
2-1/2 x 2 DN65 x 50	2.38 (60,5)	2.63 (66,8)	1.25 (31,8)	1.88 (47,8)	3.01 (1,36)	86262

**TABLE 2**  
**NOMINAL DIMENSIONS FIGURE 812**

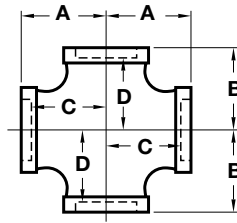


FIGURE 817  
CROSS

Nominal Pipe Size	Figure 817					
ANSI Inches DN	A Inches (mm)	B Inches (mm)	C Inches (mm)	D Inches (mm)	Approx. Weight Lbs. (kg)	Part Number
1 DN25	1.50 (38,1)	1.50 (38,1)	0.81 (20,6)	0.81 (20,6)	0.97 (0,44)	86284
1-1/4 DN32	1.75 (44,4)	1.75 (44,4)	1.06 (26,9)	1.06 (27,0)	1.59 (0,72)	86285
1-1/2 DN40	1.94 (49,3)	1.94 (49,3)	1.19 (30,2)	1.19 (30,2)	1.89 (0,86)	86286
2 DN50	2.25 (57,1)	2.25 (57,1)	1.50 (38,1)	1.50 (38,1)	2.93 (1,33)	86287
1-1/4 x 1-1/4 x 1 x 1 DN32 x 32 x 25 x 25	1.69 (42,9)	1.56 (39,6)	1.00 (25,4)	0.88 (22,4)	1.25 (0,56)	86289
1-1/2 x 1-1/2 x 1 x 1 DN40 x 40 x 25 x 25	1.81 (46,0)	1.63 (41,4)	1.06 (26,9)	1.94 (49,3)	1.48 (0,71)	86322
2 x 2 x 1 x 1 DN50 x 50 x 25 x 25	2.00 (50,8)	1.75 (44,4)	1.25 (31,8)	1.06 (26,9)	2.64 (1,20)	86291

**TABLE 3**  
**NOMINAL DIMENSIONS FIGURE 817**

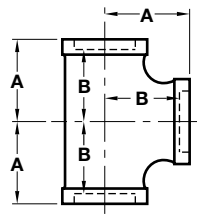


FIGURE 814  
IRON TEE

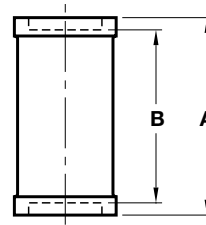


FIGURE 818  
STRAIGHT COUPLING

Nominal Pipe Size	Figure 814				Figure 818			
	ANSI Inches DN	A Inches (mm)	B Inches (mm)	Approx. Weight Lbs. (kg)	Part Number	A Inches (mm)	B Inches (mm)	Approx. Weight Lbs. (kg)
1/2 DN15	1.13 (28,7)	0.56 (14,2)	0.33 (0,15)	86340	1.38 (35,1)	0.31 (7,9)	0.18 (0,08)	72779
3/4 DN20	1.31 (33,3)	0.75 (19,0)	0.50 (0,23)	86341	1.63 (41,4)	0.56 (14,0)	0.26 (0,11)	72778
1 DN25	1.50 (38,1)	0.81 (20,6)	0.85 (0,38)	86230	1.75 (44,4)	0.38 (9,7)	0.44 (0,20)	72755
1-1/4 DN32	1.75 (44,4)	1.06 (26,9)	1.30 (0,59)	86231	2.00 (50,8)	0.56 (14,0)	0.54 (0,24)	72754
1-1/2 DN40	1.94 (49,3)	1.19 (30,2)	1.63 (0,74)	86232	2.19 (55,6)	0.75 (19,0)	0.71 (0,32)	72753
2 DN50	2.25 (57,1)	1.50 (38,1)	2.63 (1,19)	86233	2.63 (66,8)	1.13 (28,7)	1.15 (0,52)	72752
2-1/2 DN65	2.69 (68,3)	1.56 (39,6)	4.55 (2,06)	86234	3.00 (76,2)	0.75 (19,0)	2.29 (1,04)	72758

**TABLE 4**  
**NOMINAL DIMENSIONS FIGURES 814 & 818**

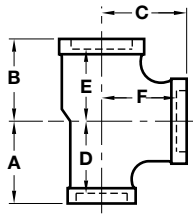


FIGURE 815  
REDUCING TEE

Nominal Pipe Size	Figure 815							Approx. Weight Lbs. (kg)	Part Number
ANSI Inches DN	A Inches (mm)	B Inches (mm)	C Inches (mm)	D Inches (mm)	E Inches (mm)	F Inches (mm)			
3/4 x 3/4 x 1/2 DN20 x 20 x 15	1.19 (30,2)	1.19 (30,2)	1.25 (31,8)	0.63 (16,0)	0.63 (16,0)	0.69 (17,5)	0.46 (0,21)	86235	
3/4 x 3/4 x 1 DN20 x 20 x 25	1.44 (36,6)	1.44 (36,6)	1.38 (35,1)	0.88 (22,4)	0.88 (22,4)	0.69 (17,5)	0.68 (0,31)	86755	
1 x 1/2 x 1 DN25 x 15 x 25	1.50 (38,1)	1.38 (35,1)	1.50 (38,1)	0.81 (20,6)	0.81 (20,6)	0.81 (20,6)	0.70 (0,32)	86236	
1 x 3/4 x 1/2 DN25 x 20 x 15	1.25 (31,8)	1.19 (30,2)	1.38 (35,1)	0.56 (14,2)	0.63 (16,0)	0.81 (20,6)	0.63 (0,28)	86756	
1 x 3/4 x 3/4 DN25 x 20 x 20	1.38 (35,1)	1.31 (33,3)	1.44 (36,6)	0.69 (17,5)	0.75 (19,0)	0.88 (22,4)	0.68 (0,31)	86757	
1 x 3/4 x 1 DN25 x 20 x 25	1.50 (38,1)	1.44 (36,6)	1.50 (38,1)	0.81 (20,6)	0.88 (22,4)	0.81 (20,6)	0.77 (0,35)	86237	
1 x 1 x 1/2 DN25 x 25 x 15	1.25 (31,8)	1.25 (31,8)	1.38 (35,1)	0.56 (14,3)	0.56 (14,3)	0.81 (20,6)	0.66 (0,30)	86238	
1 x 1 x 3/4 DN25 x 25 x 20	1.38 (35,1)	1.38 (35,1)	1.44 (36,6)	0.69 (17,5)	0.69 (17,5)	0.88 (22,4)	0.73 (0,33)	86239	
1 x 1 x 1-1/4 DN25 x 25 x 32	1.69 (42,9)	1.69 (42,9)	1.56 (39,6)	1.00 (25,4)	1.00 (25,4)	0.88 (22,4)	0.97 (0,44)	86240	
1 x 1 x 1-1/2 DN25 x 25 x 40	1.81 (46,0)	1.81 (46,0)	1.63 (41,4)	1.13 (28,6)	1.13 (28,6)	0.88 (22,4)	1.14 (0,52)	86241	
1-1/4 x 1 x 1/2 DN32 x 25 x 15	1.94 (49,2)	1.25 (31,8)	1.56 (39,6)	0.63 (15,9)	0.56 (14,3)	1.00 (25,4)	0.81 (0,37)	86242	
1-1/4 x 1 x 3/4 DN32 x 25 x 20	1.44 (36,6)	1.38 (35,1)	1.62 (41,2)	0.75 (19,0)	0.69 (17,5)	1.06 (27,0)	0.90 (0,41)	86243	
1-1/4 x 1 x 1 DN32 x 25 x 25	1.56 (39,6)	1.50 (38,1)	1.69 (42,9)	0.88 (22,4)	0.81 (20,6)	1.00 (25,4)	1.03 (0,47)	86244	
1-1/4 x 1 x 1-1/4 DN32 x 25 x 32	1.75 (44,4)	1.69 (42,9)	1.75 (44,4)	1.06 (27,0)	1.00 (25,4)	1.06 (27,0)	1.10 (0,50)	86245	
1-1/4 x 1 x 1-1/2 DN32 x 25 x 40	1.88 (47,6)	1.81 (46,0)	1.81 (46,0)	1.19 (30,1)	1.13 (28,6)	1.06 (27,0)	1.43 (0,65)	86246	
1-1/4 x 1-1/4 x 1/2 DN32 x 32 x 15	1.38 (35,1)	1.38 (35,1)	1.56 (39,6)	0.69 (17,5)	0.69 (17,5)	1.00 (25,4)	0.87 (0,39)	86247	
1-1/4 x 1-1/4 x 3/4 DN32 x 32 x 20	1.44 (36,6)	1.44 (36,6)	1.63 (41,4)	0.75 (19,0)	0.75 (19,0)	1.06 (27,0)	0.96 (0,43)	86248	
1-1/4 x 1-1/4 x 1 DN32 x 32 x 25	1.56 (39,6)	1.56 (39,6)	1.69 (42,9)	0.88 (22,4)	0.88 (22,4)	1.00 (25,4)	1.10 (0,50)	86249	
1-1/4 x 1-1/4 x 1-1/2 DN32 x 32 x 40	1.88 (47,6)	1.88 (47,6)	1.81 (46,0)	1.81 (46,0)	1.81 (46,0)	1.06 (27,0)	1.50 (0,68)	86250	
1-1/4 x 1-1/4 x 2 DN32 x 32 x 50	2.13 (54,1)	2.13 (54,1)	2.00 (50,8)	1.44 (36,6)	1.44 (36,6)	1.13 (28,6)	2.00 (0,91)	86251	
1-1/2 x 1 x 1/2 DN40 x 25 x 15	1.44 (36,6)	1.31 (33,3)	1.69 (42,9)	0.69 (17,5)	0.63 (15,9)	1.13 (28,6)	0.97 (0,44)	86252	
1-1/2 x 1 x 3/4 DN40 x 25 x 20	1.50 (38,1)	1.38 (35,1)	1.75 (44,4)	0.75 (19,0)	0.69 (17,5)	1.19 (30,2)	1.14 (0,52)	86253	
1-1/2 x 1 x 1 DN40 x 25 x 25	1.63 (41,4)	1.50 (38,1)	1.81 (46,0)	0.88 (22,4)	0.81 (20,6)	1.13 (28,7)	1.14 (0,52)	86254	
1-1/2 x 1 x 1-1/2 DN40 x 25 x 40	1.94 (49,3)	1.81 (46,0)	1.94 (49,2)	1.19 (30,2)	1.13 (28,6)	1.19 (30,2)	1.52 (0,69)	86255	

TABLE 5 (1 OF 2)  
NOMINAL DIMENSIONS FIGURE 815

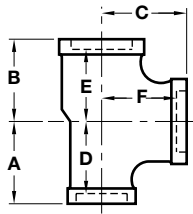


FIGURE 815  
REDUCING TEE

Nominal Pipe Size	Figure 815							Approx. Weight Lbs. (kg)	Part Number
ANSI Inches DN	A Inches (mm)	B Inches (mm)	C Inches (mm)	D Inches (mm)	E Inches (mm)	F Inches (mm)			
1-1/2 x 1-1/4 x 1/2 DN40 x 32 x 15	1.44 (36,6)	1.31 (33,3)	1.69 (42,9)	0.69 (17,5)	0.63 (16,0)	1.13 (28,7)	1.03 (0,47)	86257	
1-1/2 x 1-1/4 x 3/4 DN40 x 32 x 20	1.50 (38,1)	1.44 (36,6)	1.75 (44,5)	0.75 (19,0)	0.75 (19,0)	1.19 (30,1)	1.10 (0,50)	86258	
1-1/2 x 1-1/4 x 1 DN40 x 32 x 25	1.63 (41,4)	1.56 (39,7)	1.81 (46,0)	0.88 (22,4)	0.88 (22,4)	1.13 (28,7)	1.31 (0,59)	86259	
1-1/2 x 1-1/4 x 2 DN40 x 32 x 50	2.19 (55,6)	2.13 (54,1)	2.00 (50,8)	1.44 (36,6)	1.44 (36,6)	1.25 (57,1)	1.94 (0,88)	86260	
1-1/2 x 1-1/2 x 1/2 DN40 x 40 x 15	1.44 (36,6)	1.44 (36,6)	1.69 (42,9)	0.69 (17,5)	0.69 (17,5)	1.13 (28,7)	1.14 (0,52)	86261	
1-1/2 x 1-1/2 x 3/4 DN40 x 40 x 20	1.50 (38,1)	1.50 (38,1)	1.75 (44,4)	0.75 (19,0)	0.75 (19,0)	1.19 (30,1)	1.23 (0,56)	86262	
1-1/2 x 1-1/2 x 1 DN40 x 40 x 25	1.63 (41,2)	1.63 (41,2)	1.81 (46,0)	0.88 (22,4)	0.88 (22,4)	1.13 (28,7)	1.38 (0,62)	86263	
1-1/2 x 1-1/2 x 1-1/4 DN40 x 40 x 32	1.81 (46,0)	1.81 (46,0)	1.88 (47,6)	1.06 (27,0)	1.06 (27,0)	1.19 (30,1)	1.50 (0,68)	86264	
1-1/2 x 1-1/2 x 2 DN40 x 40 x 50	2.19 (55,5)	2.19 (55,5)	2.00 (50,8)	1.44 (36,6)	1.44 (36,6)	1.25 (31,7)	2.00 (0,91)	86265	
2 x 1 x 2 DN50 x 25 x 50	2.25 (57,2)	2.00 (50,8)	2.25 (57,2)	1.50 (38,1)	1.31 (33,3)	1.50 (38,1)	2.18 (0,99)	86266	
2 x 1-1/4 x 2 DN50 x 32 x 50	2.25 (57,2)	2.13 (54,1)	2.25 (57,2)	1.50 (38,1)	1.44 (36,6)	1.50 (38,1)	2.31 (1,05)	86267	
2 x 1-1/2 x 1/2 DN50 x 40 x 15	1.50 (38,1)	1.44 (36,6)	1.88 (47,8)	0.75 (19,0)	0.69 (17,5)	1.31 (33,3)	1.50 (0,68)	86268	
2 x 1-1/2 x 3/4 DN50 x 40 x 20	1.63 (41,4)	1.50 (38,1)	1.94 (49,3)	0.88 (22,4)	0.75 (19,0)	1.38 (35,0)	1.61 (0,73)	86269	
2 x 1-1/2 x 1 DN50 x 40 x 25	1.75 (44,5)	1.63 (41,4)	2.00 (50,8)	1.00 (25,4)	0.88 (22,4)	1.31 (33,3)	1.65 (0,75)	86270	
2 x 1-1/2 x 1-1/2 DN50 x 40 x 40	2.06 (52,4)	1.94 (49,2)	2.19 (55,5)	1.31 (33,3)	1.19 (30,2)	1.44 (36,6)	2.03 (0,92)	86272	
2 x 1-1/2 x 2 DN50 x 40 x 50	2.25 (57,1)	2.19 (55,5)	2.50 (63,5)	1.50 (38,1)	1.44 (36,6)	1.50 (38,1)	2.37 (1,07)	86273	
2 x 2 x 1/2 DN50 x 50 x 15	1.50 (38,1)	1.50 (38,1)	1.88 (47,8)	0.75 (19,0)	0.75 (19,0)	1.31 (33,3)	1.50 (0,68)	86222	
2 x 2 x 3/4 DN50 x 50 x 20	1.63 (41,4)	1.63 (41,4)	1.94 (49,3)	0.88 (22,4)	0.88 (22,4)	1.38 (35,0)	1.67 (0,76)	86223	
2 x 2 x 1 DN50 x 50 x 25	1.75 (44,5)	1.75 (44,5)	2.00 (50,8)	1.00 (25,4)	1.00 (25,4)	1.31 (33,3)	1.91 (0,86)	86224	
2 x 2 x 1-1/4 DN50 x 50 x 32	1.88 (47,8)	1.88 (47,8)	2.13 (54,1)	1.13 (28,7)	1.13 (28,7)	1.44 (36,6)	2.05 (0,93)	86225	
2 x 2 x 1-1/2 DN50 x 50 x 40	2.00 (50,8)	2.00 (50,8)	2.19 (55,6)	1.25 (31,8)	1.25 (31,8)	1.50 (38,1)	2.11 (0,96)	86226	
2 x 2 x 2-1/2 DN50 x 50 x 65	2.63 (66,8)	2.63 (66,8)	2.38 (60,5)	1.75 (44,5)	1.88 (47,8)	1.44 (36,6)	3.67 (1,66)	86227	
2-1/2 x 2 x 3/4 DN65 x 50 x 20	1.75 (44,5)	1.63 (41,4)	2.31 (58,7)	0.63 (15,9)	0.88 (22,4)	1.75 (44,5)	2.22 (1,01)	86274	

TABLE 5 (2 OF 2)  
NOMINAL DIMENSIONS FIGURE 815

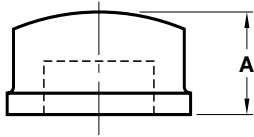


FIGURE 820  
CAP

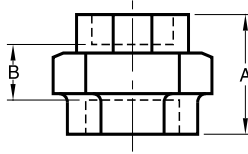


FIGURE 830  
BRASS SEAT UNION

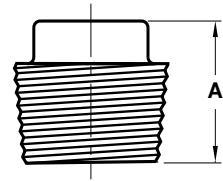


FIGURE 719  
PLUG

Nominal Pipe Size	Figure 820			Figure 830				Figure 719		
	A Inches (mm)	Approx. Weight Lbs. (kg)	Part Number	A Inches (mm)	B Inches (mm)	Approx. Weight Lbs. (kg)	Part Number	A Inches (mm)	Approx. Weight Lbs. (kg)	Part Number
1/2 DN15	0.88 (22,4)	0.15 (0,06)	72776	1.88 (47,8)	0.81 (20,6)	0.47 (0,21)	86207	0.94 (23,9)	0.10 (0,04)	86292
3/4 DN20	1.00 (25,4)	0.22 (0,10)	72777	2.00 (50,8)	0.94 (23,9)	0.66 (0,30)	86275	1.13 (28,7)	0.18 (0,08)	86293
1 DN25	1.18 (30,0)	0.33 (0,15)	72824	2.19 (55,6)	0.81 (20,6)	1.08 (0,49)	86276	1.25 (31,7)	0.28 (0,13)	86294
1-1/4 DN32	1.31 (33,3)	0.54 (0,24)	72756	2.50 (63,5)	1.06 (26,9)	1.54 (0,70)	86277	1.38 (35,1)	0.50 (0,23)	86295
1-1/2 DN40	1.38 (35,1)	0.68 (0,31)	72822	2.63 (66,8)	1.19 (30,2)	2.03 (0,92)	86278	1.44 (36,6)	0.70 (0,32)	86296
2 DN50	1.50 (38,1)	0.96 (0,43)	72823	3.13 (79,5)	1.63 (41,4)	3.15 (1,43)	86279	1.50 (38,1)	0.90 (0,41)	86297
2-1/2 DN65	1.75 (44,5)	1.80 (0,82)	72825	-	-	-	-	-	-	-

**TABLE 6**  
**NOMINAL DIMENSIONS FIGURES 820, 830 & 719**



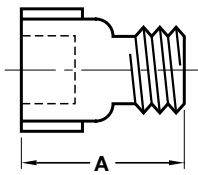


FIGURE 825  
EXTENSION PIECE

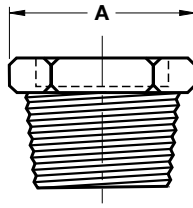


FIGURE 827  
HEX BUSHING

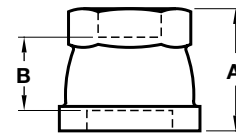
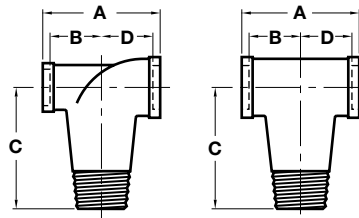


FIGURE 816  
REDUCING COUPLING

Nominal Pipe Size	Figure 825 Extension Piece			Figure 827 Hex Bushing			Figure 816 Reducing Coupling				
	ANSI Inches DN	A Inches (mm)	Approx. Weight Lbs. (kg)	Part Number	A Inches (mm)	Approx. Weight Lbs. (kg)	Part Number	A Inches (mm)	B Inches (mm)	Approx. Weight Lbs. (kg)	Part Number
1/2 x 1/2 DN15 x 15	1.50 (38,1)	0.20 (0,09)	72751	-	-	-	-	-	-	-	-
1/2 x 1/2 DN15 x 15	2.00 (50,8)	0.27 (0,12)	72980	-	-	-	-	-	-	-	-
3/4 x 3/4 DN20 x 20	1.50 (38,1)	0.22 (0,10)	72981	-	-	-	-	-	-	-	-
3/4 x 3/4 DN20 x 20	2.00 (50,8)	0.31 (0,14)	73982	-	-	-	-	-	-	-	-
3/4 x 1/2 DN20 x 15	-	-	-	-	-	-	1.75 (43,2)	0.69 (17,5)	0.38 (0,17)	86772	
1 x 1/2 DN25 x 15	-	-	-	1.06 (26,9)	0.22 (0,10)	72726	1.69 (42,9)	0.50 (12,7)	0.38 (0,17)	86228	
1 x 3/4 DN25 x 20	-	-	-	1.06 (26,9)	0.18 (0,08)	72762	1.75 (43,2)	0.50 (12,7)	0.53 (0,24)	86229	
1-1/4 x 1 DN32 x 25	-	-	-	1.19 (30,2)	0.31 (0,14)	72763	-	-	-	-	
1-1/2 x 1 DN40 x 25	-	-	-	1.25 (31,7)	0.53 (0,24)	72757	-	-	-	-	
1-1/2 x 1-1/4 DN40 x 32	-	-	-	1.25 (31,7)	0.35 (0,10)	72764	-	-	-	-	
2 x 1 DN50 x 25	-	-	-	1.38 (35,1)	0.75 (0,34)	72759	-	-	-	-	
2 x 1-1/4 DN50 x 32	-	-	-	1.38 (35,1)	0.69 (0,31)	72761	-	-	-	-	
2 x 1-1/2 DN50 x 40	-	-	-	1.38 (35,1)	0.62 (0,28)	72775	-	-	-	-	

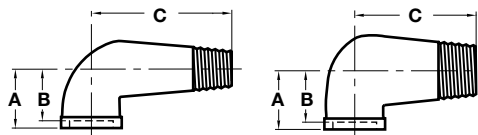
**TABLE 7**  
**NOMINAL DIMENSIONS FIGURE 825, 827 & 816**



**CALIFORNIA TEES**

Nominal Pipe Size	California Tees					
ANSI Inches DN	A Inches (mm)	B Inches (mm)	C Inches (mm)	D Inches (mm)	Approx. Weight Lbs. (kg)	Part Number
1 x 1/2 x 1 DN25 x 15 x 25	1.50 (38,1)	0.88 (22,4)	3.00 (76,2)	0.75 (19,1)	0.95 (0,43)	42000
1 x 1 x 1 DN25 x 25 x 25	1.50 (38,1)	0.75 (19,1)	3.00 (76,2)	0.75 (19,1)	0.95 (0,43)	42001

**TABLE 8  
NOMINAL DIMENSIONS CALIFORNIA TEES**



**STREET ELBOWS**

Nominal Pipe Size	Street Elbows				
ANSI Inches DN	A Inches (mm)	B Inches (mm)	C Inches (mm)	Approx. Weight Lbs. (kg)	Part Number
1 x 1/2 DN25 x 15	1.50 (38,1)	0.75 (19,1)	3.00 (76,2)	0.70 (0,32)	42003
1 x 1 DN25 x 25	1.50 (38,1)	0.75 (19,1)	3.00 (76,2)	0.90 (0,40)	42002

**TABLE 9  
NOMINAL DIMENSIONS STREET ELBOWS**