

Pollardwater

Flowmaster 250

Portable Flow & Pressure Test Instrument

The TSI Flowmaster provides the most reliable and accurate flow and pressure measurements. Invaluable for hydrant testing, pump testing, flushing and water main condition testing.

Measures flow rates up to 1350USGPM / 5,000lpm and pressures up to 350 PSI / 25 bar. The electro-magnetic sensor has no moving parts - measurement is not affected by debris in the water stream.

Applications

- Hydrant Testing
- Flushing
- Trunk Main Conditioning
- Minimum Night Flow Measurement

Features

- Ease of Use
- Electromagnetic Sensor - No Moving Parts
- High Accuracy - Digital Pressure +/- 1% of Range
- Flowrate Accuracy: $\pm 4\%$
- Robust Construction
- Internal Rechargeable NiMH Battery - Up to 10 Hours Operating Battery Life

2 Display Modes

- US GPM
- Litres per minute (lpm)
- Dual Pressure Readout (PSI/Bar)





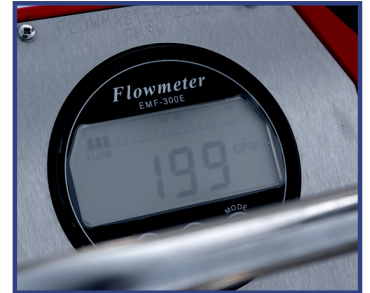
Lightweight & Portable



Easy to Read Pressure Readout



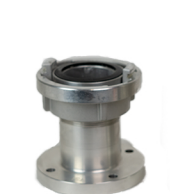
Robust Engineering



Simple Readout Display

Other Adaptors Available

Including:



• Storz 65/B/C



• BS Fitting



• NH Valve

Transport Case Available

with interior compartments
for Flowmaster & accessory kit,
castor wheels & handle.



Technical Data Flowmaster 250

(EN ISO 12100-1, EN ISO 12100-2, EN 60204)

Battery power supply: rechargeable battery, 10 hours operation,
12 V DC, 2.2 Ah, separate charger included with delivery.
Working temperature: -10 to +50°C.
Connections: 2.5" NH Female Swivel on Inlet, Male on Outlet
Dimensions: 210 mm height, 240 mm width, 390 mm depth.
Weight: 12.5 kg Housing: Aluminium.

Flow Meter:

Type: Electromagnetic.

Operating range: 15-1350 US GPM / 60-5000 LPM

Accuracy: 9 to 200 USGPM \pm 4 USGPM, >200 USGPM \pm 4%.

Standard functions: Display of current flow rate, display of volume.

LCD display: 4-digit, character size 18 mm, background illumination.

Pressure Gauge: Operating Range: 0-350PSI / 0 - 25 bar (\pm 1%)

Part Number: T0342002