

Pollardwater

Flowmaster 250DL

Portable Flow & Pressure Test Instrument with Data Logger

The Flowmaster 250DL measures the flow rate and the pressure at every water drawing off point and produces verifiable reports.

Measures flow rates up to 1350USGPM / 5,000lpm and pressures up to 350 PSI / 25 bar. It's integrated data logger stores up to 360 hours of measurements that can be downloaded to a computer. Predefined reports and graphs can be printed.

Applications

- Hydrant Testing
- Flushing
- Trunk Main Conditioning
- Minimum Night Flow Measurement

Features

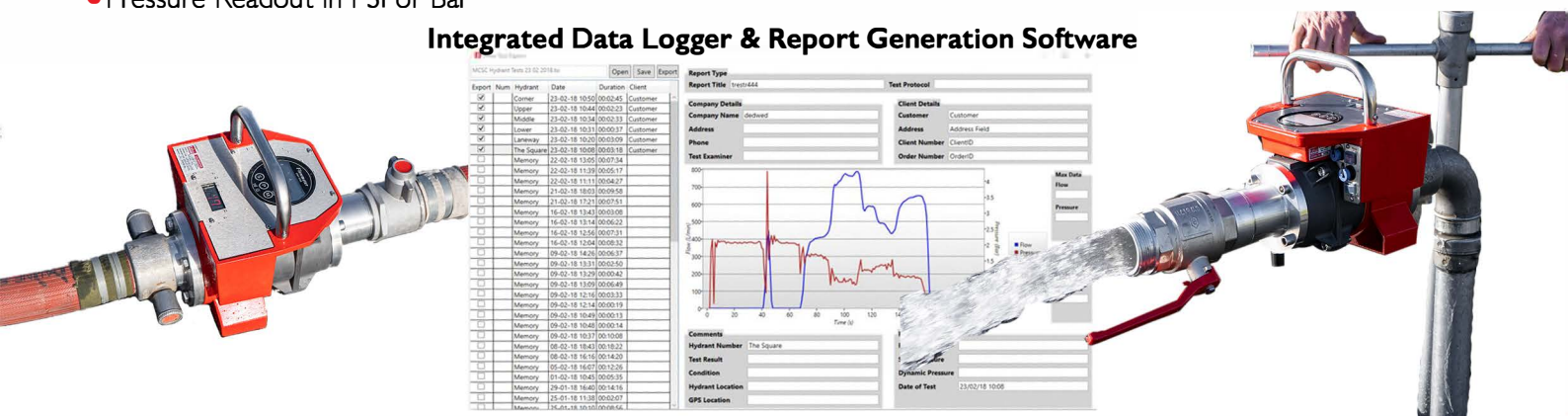
- Ease of Use
- Electromagnetic Sensor - No Moving Parts
- High Accuracy - Digital Pressure +/- 1% of Range
- Flowrate Accuracy: $\pm 4\%$
- Integrated Data Logger
- Internal Rechargeable NiMH Battery - Up to 10 Hours Operating Battery Life
- Robust Construction

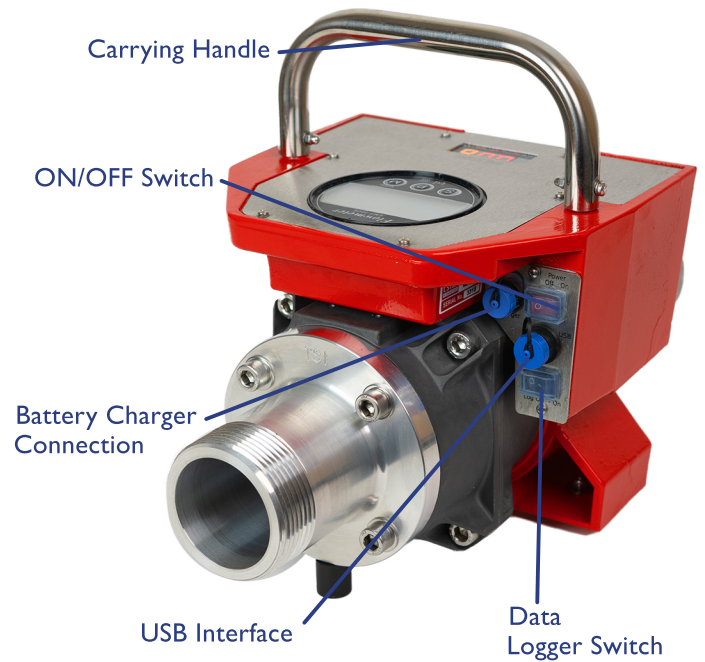
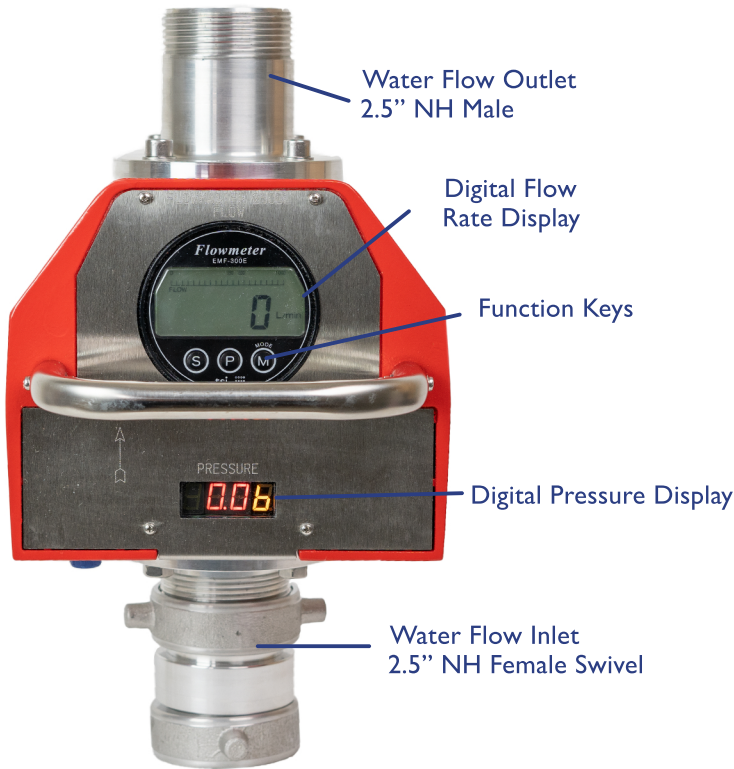
2 Display Modes

- US GPM
- Litres per minute (lpm)
- Pressure Readout in PSI or Bar



Integrated Data Logger & Report Generation Software





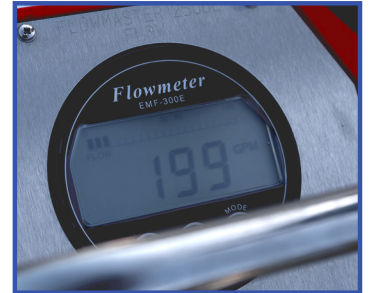
Lightweight & Portable



Easy to Read Pressure Readout



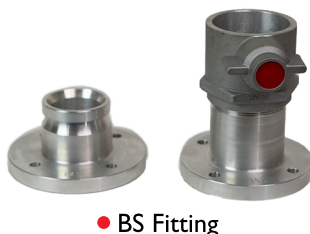
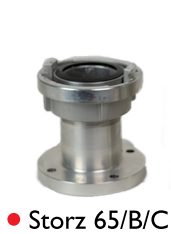
Robust Engineering



Simple Readout Display

Other Adaptors Available

Including:



Transport Case Available

with interior compartments
for Flowmaster & accessory kit,
castor wheels & handle.



Technical Data Flowmaster 250DL

(EN ISO 12100-1, EN ISO 12100-2, EN 60204)

Internal Data Logger: Record Up to 12 Hours of Flow and Pressure Readings
Battery power supply: rechargeable battery, 10 hours operation.
12V DC, 2.2 Ah, separate charger included with delivery.
Working temperature: -10 to +50°C.
Connections: 2.5" NH Female Swivel on Inlet, Male on Outlet
Dimensions: 210 mm height, 240 mm width, 390 mm depth.
Weight: 12.5 kg Housing: Aluminium.

Flow Meter:
Type: Electromagnetic.
Operating range: 15-1350 US GPM / 60-5000 LPM
Accuracy: 9 to 200 GPM ± 4 GPM, >200 GPM $\pm 4\%$.
Standard functions: Display of current flow rate, display of volume.
LCD display: 4-digit, character size 18 mm, background illumination.
Pressure Transducer: Operating Range: 0-350PSI / 0 - 25 bar ($\pm 1\%$)