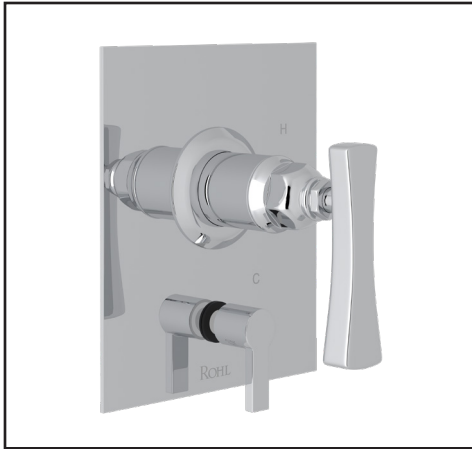


ROHL.

Authentic Luxury for Kitchen and Bath®



www.ferguson.com



MATHESON® PRESSURE BALANCE TRIM WITH DIVERTER

Transitional Matheson®

ML2016NLM

FEATURES

- Single handle control
- Trim for concealed pressure balance rough valve with diverter
- Brass construction
- Showerhead to tub spout or handshower diverter
- Must order RDD-2 rough valve to complete

COLORS/FINISHES

- Polished Chrome
- Polished Nickel
- Satin Nickel

WARRANTY

- Limited Lifetime

