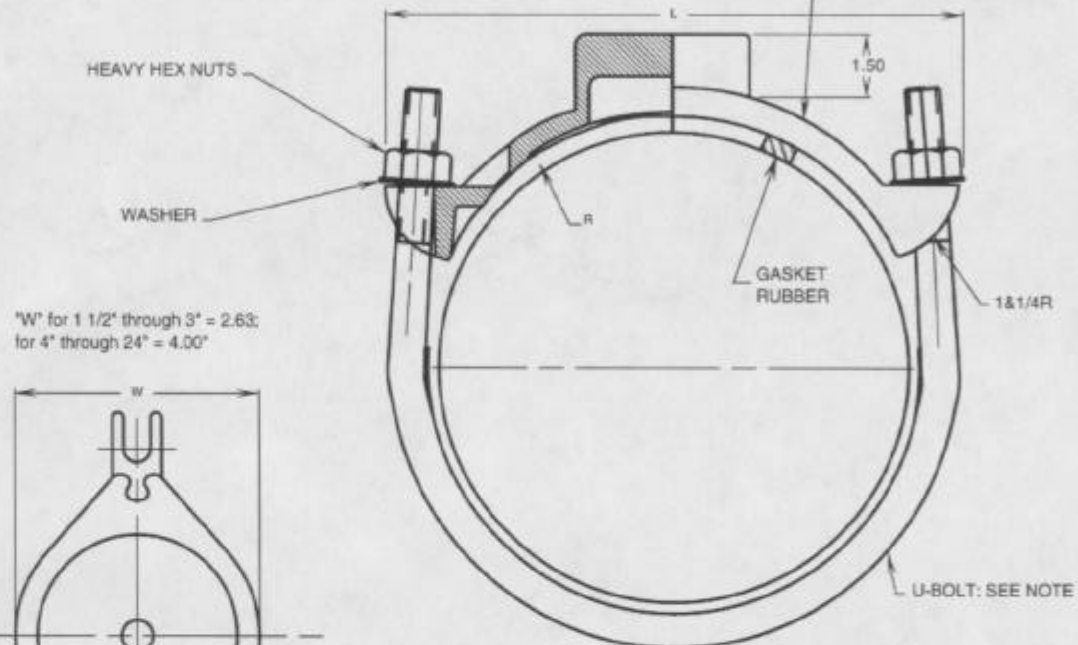


B1506-A

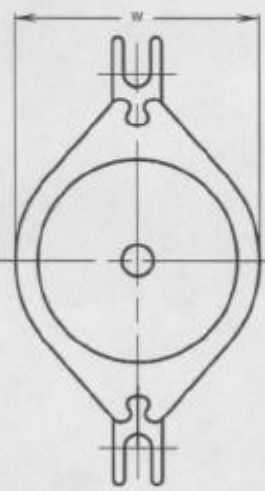
NOMINAL SIZE	O.D. PIPE RANGE	LENGTH(L)	RADIUS(R)
1 1/2"	1.90 - 2.13	4.688	1.07
2"	2.38 - 2.50	4.500	1.25
3"	3.45 - 4.05	5.563	2.21
4"	4.00 - 4.50	6.875	2.25
	4.50 - 5.40	7.563	2.70
6"	6.00 - 6.63	8.750	3.32
	6.63 - 6.90	8.875	3.45
8"	6.63 - 7.60	9.625	3.80
	8.00 - 8.63	10.750	4.32
10"	8.63 - 9.05	11.125	4.53
	8.63 - 9.80	11.750	4.90
12"	10.00 - 10.75	13.375	5.38
	10.75 - 11.10	13.125	5.55
12"	11.10 - 12.12	14.000	6.06
	12.00 - 12.75	15.313	6.38
12"	12.75 - 13.20	15.125	6.60
	13.20 - 14.38	16.188	7.19

REVISIONS			
REV	DESCRIPTION	DATE	APPROVED


BODY - DUCTILE (NONDULAR) IRON
ASTM A536 - 80 GRADE 65 - 45 - 12



"W" for 1 1/2" through 3" = 2.63;
for 4" through 24" = 4.00"



NOTE: For sizes 1-1/2" through 3", 1/2" national coarse roll thread, electro-galvanized mild steel strap with heavy hex nuts and 1/2" flat washers. 4" and above uses 5/8" national coarse roll thread, high tensile strength, low allow steel, with heavy hex nut and 5/8" flat washer, electro-galvanized, meeting AWWA C-111 composition specifications.

UNLESS OTHERWISE SPECIFIED DIMENSIONS ARE IN INCHES TOLERANCES ARE ON: 2 PL DECIMALS +/- 3 PL DECIMALS +/- ANGLES +/- FRACTIONS +/-	SIGNATURES	DATE	 <p>ROMAC IND. INC., SEATTLE WA</p>
	DRWN J. GREGOR	10/30/97	
	CHECKED <i>[Signature]</i> 12/12/97		
	ENGRG		
	ISSUED		TITLE 101 SADDLE (1 1/2"-12")
		SIZE A	DWG NO. B1506-A
		SCALE NTS	SHEET 1 OF 1