



EAU Series Automated True Union Ball Valves

1/2" TO 2" PVC AND CPVC

VALVE FEATURES

- PVC and CPVC
- FPM or EPDM Seals
- PTFE Seats
- Full Port Design
- Fully Serviceable
- Double O-Ring Stem Seals

ACTUATOR FEATURES

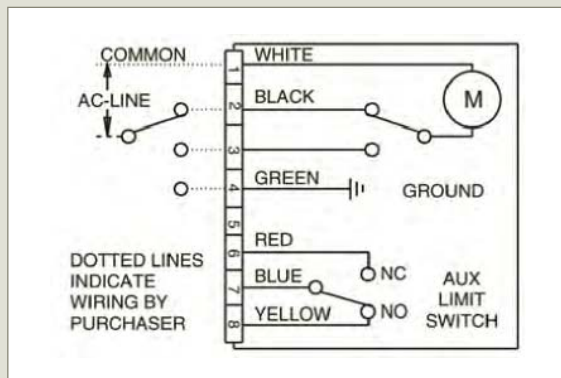
- UL/CSA Listed Motor
- Thermoplastic NEMA 4/4X Enclosure
- 2.5 Second, 90° Cycle Time
- Permanently Lubricated Gear Train
- Actuator Brake
- 90 or 180° Operation
- Unidirectional, Not Reversing
- Terminal Block Connections
- Standard 120 VAC
- End of Travel Dry Contact Limit Switch
- Thermal Overload Protection
- Lightweight, Compact and Inexpensive

MATERIALS

- PVC Cell Class 12454 per ASTM D1784
- CPVC Cell Class 23447 per ASTM D1784
- FPM and EPDM Seals

[Click Here
For Your Free Quote](#)

WIRING DIAGRAM



SELECTION CHART

SIZE	VALVE MATERIAL	END CONNECTION	VALVE SEALS	VALVE PRESSURE RATING
1/2" - 2" (DN15 - DN50)	PVC or CPVC	Socket and Threaded	FPM or EPDM	250 PSI @ 70°F Non-Shock

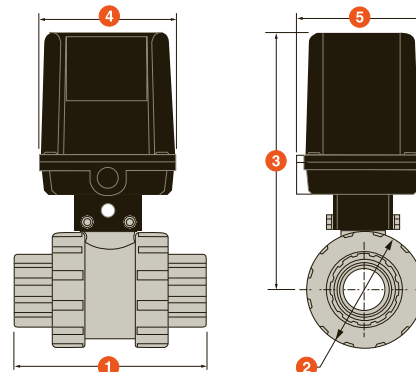
EAU Series Automated True Union Ball Valves

1/2" TO 2" PVC AND CPVC

TECHNICAL INFORMATION, *CONTINUED*

DIMENSIONS

SIZE in/DN	1 in/mm	2 in/mm	3 in/mm	4 in/mm	5 in/mm	WEIGHT lbs/kg
1/2/15	4.63/118	2.25/57	8.40/213	4.88/124	4.13/105	6.80/3.08
3/4/20	4.75/121	2.63/67	8.60/218	4.88/124	4.13/105	6.80/3.08
1/25	5.25/133	3.00/76	9.10/231	4.88/124	4.13/105	7.10/3.22
1-1/4/32	6.30/160	4.00/102	9.50/241	4.88/124	4.13/105	8.00/3.63
1-1/2/40	6.75/171	4.00/102	9.50/241	4.88/124	4.13/105	8.10/3.67
2/50	8.00/203	4.75/121	10.10/257	4.88/124	4.13/105	9.80/4.45



Dimensions are subject to change without notice – consult factory for installation information

ACTUATOR SPECIFICATIONS

MODEL	EAUTB
Torque Output (in-lbs)	140
Standard Voltage	120 VAC
Duty Cycle	25%
Thermal Overload	Standard
Cycle Time (secs*)	2.5/5.0
Conduit Entry	1/2" NPT
Enclosure	NEMA 4/4X
Enclosure Material	Polypropylene
Max Current Amps @ 115 VAC	1.8 (60 Hz), 2.8 (50 Hz)

VALVE SPECIFICATIONS

VALVE TYPE	TRUE UNION
Material of Construction	PVC, CPVC
Seals	FPM/EPDM
Seats	PTFE
End Connections	Socket or Threaded
Sizes	1/2", 3/4", 1", 1-1/4" 1-1/2" and 2"
Pressure Rating	250 PSI @ 70°F non-shock
Design	Full Port

* EAU28 = 5.0, EAU29 = 2.5

Cv VALUES

SIZE in/DN	Cv VALUES	SIZE in/DN	Cv VALUES
1/2/15	8.0	1-1/4/32	75.0
3/4/20	15.0	1-1/2/40	90.0
1/25	29.0	2/50	140.0

PRESSURE LOSS CALCULATION FORMULA

$$\Delta P = \left[\frac{Q}{C_v} \right]^2$$

ΔP = Pressure Drop

Q = Flow in GPM

Cv = Flow Coefficient



Hayward is a registered trademark
of Hayward Industries, Inc.
© 2015 Hayward Industries, Inc.

Contact Hayward Flow Control with questions: **USA:** 1-888-429-4635 • Fax: 1-888-778-8410 • One Hayward Industrial Drive • Clemmons, NC 27012 USA
Canada: 1.888.238.7665 • Fax: 1.905.829.3636 • 2880 Plymouth Drive • Oakville, ON L6H 5R4 Canada • Email: hflowcanada@haywardnet.com
Visit us at: www.haywardflowcontrol.com • E-mail: hflow@haywardnet.com