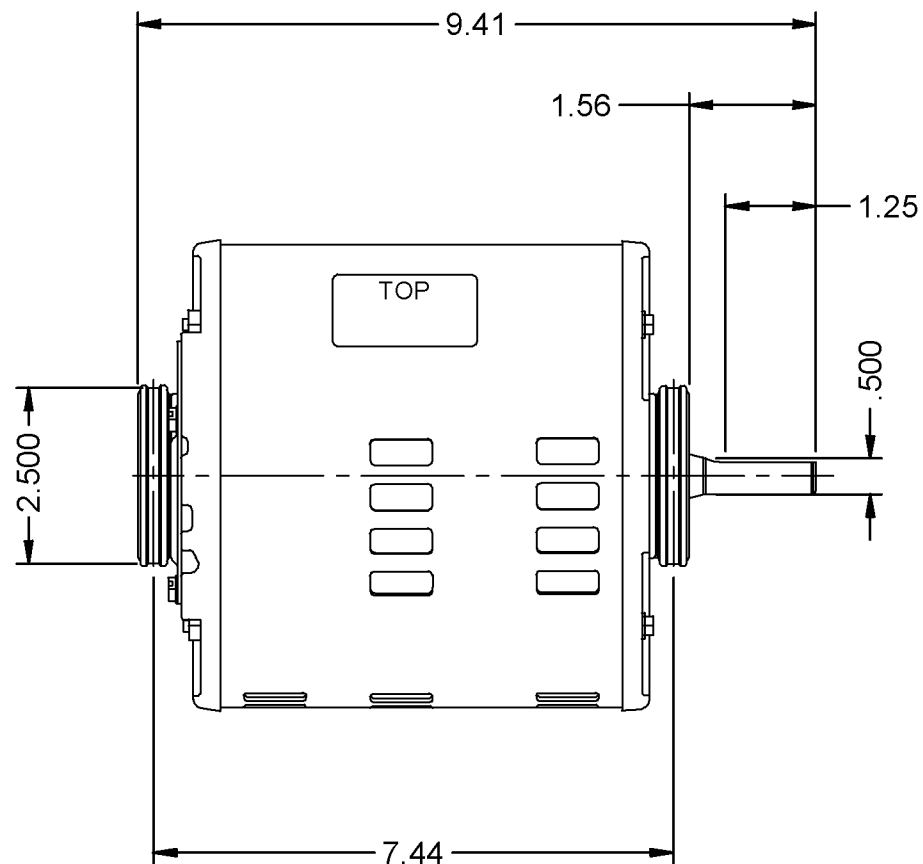
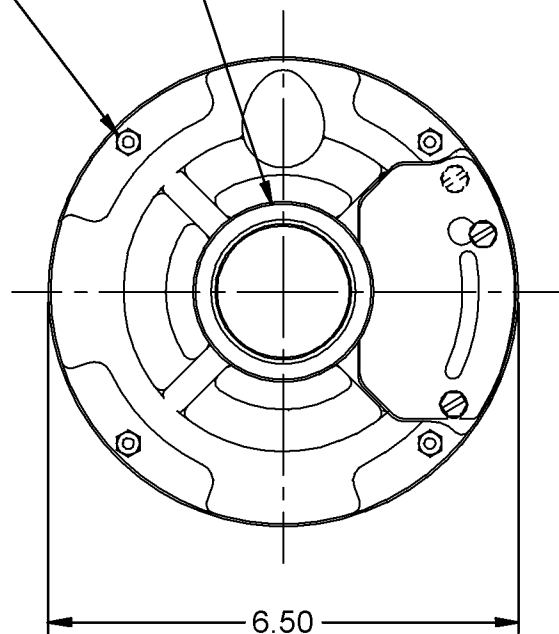



SEE NOTE #1  
MANUFACTURING OPTION

OIL PLUG  
(BOTH ENDS)



NOTE:  
#1) MANUFACTURING OPTION: MOTOR CONSTRUCTION  
MAY BE E-LOC OR STATOR SCREWS.

© EMERSON ELECTRIC CO. 4/15/2004

| MODEL          |                                       | REF. | CUSTOMER          | HP. | VOLTS  | AMPS | HZ. | R.P.M. | ROTATION  | CUST. PT. NO. |      |
|----------------|---------------------------------------|------|-------------------|-----|--|------|-----|--------|---|---------------|------|
| S63NXSSF-7127  |                                       |      |                   | 1/2 | 115  | 8.2  | 60  | 1725   | C.CW. LEAD END  | EC6768        |      |
| PAGE 1<br>OF 1 | REVISION RECORD FOR: ECO 221863       |      |                   |     | INFORMATION DISCLOSED ON THIS DOCUMENT IS CONSIDERED PROPRIETARY AND SHALL NOT BE REPRODUCED OR DISCLOSED WITHOUT WRITTEN CONSENT OF EMERSON ELECTRIC COMPANY. |      |     |        | <div><br/><b>EMERSON.</b><br/>Motor Technologies</div> |               |      |
|                | REDRAWN FROM MSTATON TO SOLID EDGE.   |      |                   |     |  |      |     |        |   |               |      |
|                | NAMEPLATE RELOCATED, E-LOCKS REMOVED. |      |                   |     |  |      |     |        |   |               |      |
| REVISION DATE  |                                       |      |                   |     |  |      |     |        |   |               |      |
| 4-15-04        |                                       |      |                   |     | ALL DIMENSIONS ARE FOR REFERENCE ONLY UNLESS TOLERANCE IS GIVEN.   |      |     |        |   |               |      |
| ISSUED BY      | REVIEWED BY                           |      | ENGINEER APPROVED |     | TITLE  |      |     |        | CODE  | ITEM NO.      | SIZE |
| M. ORTIZ       | C. DOMINGUEZ                          |      | A. SERRANO        |     | ASSEMBLED VIEW   |      |     |        | V01   | 256230        | A    |