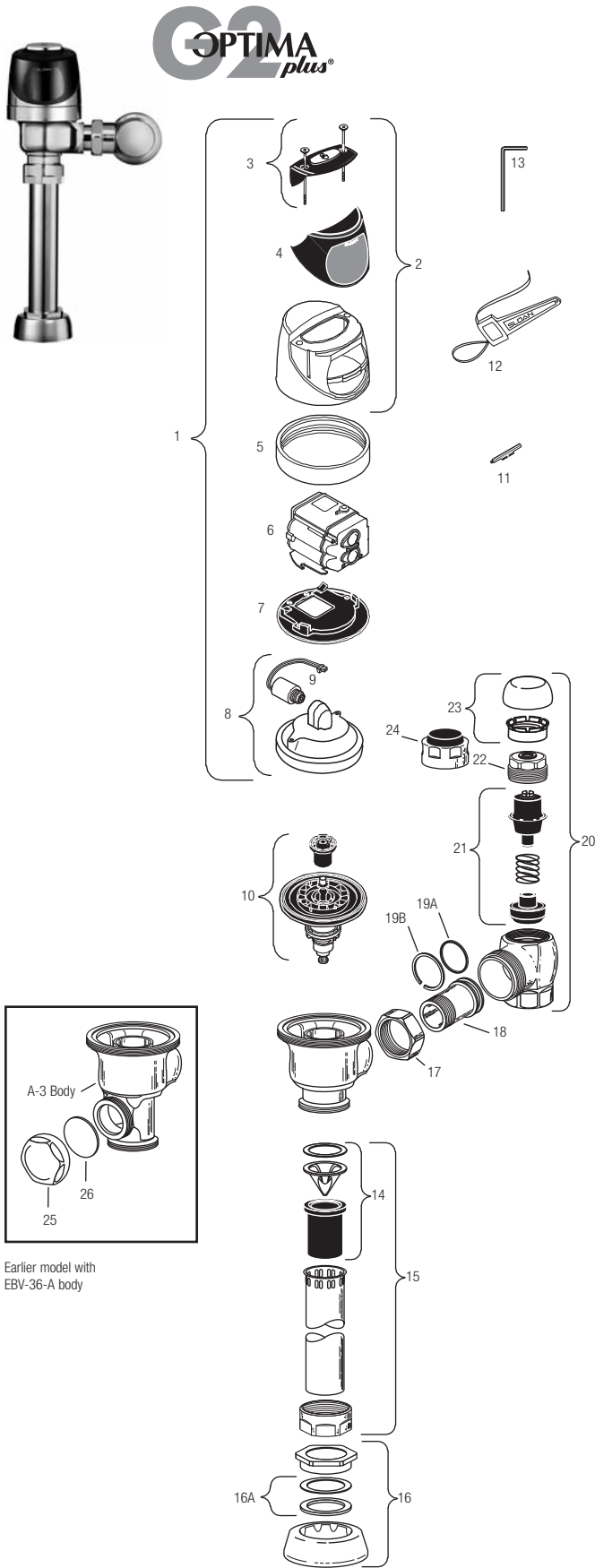


# G2 Optima Plus® Flushometer

For use with Sloan's G2 Optima Plus® flushometer introduced May, 2003.  
 For older Optima Plus® flushometers (produced from 1992 – 2003) and Regal Pro® Optima Plus® flushometers see pages 66 thru 71.



Earlier model with EBV-36-A body

## SENSOR MODULE COMPONENT PARTS

Item No.	Code No.	Part No.	Description
1.	<b>0325160</b>	EBV-138-A	G2 Cover/Ring/Sensor Assembly – Water Closet
	<b>0325161</b>	EBV-139-A	G2 Cover/Ring/Sensor Assembly – Urinal
	<b>0325166</b>	EBV-149-A	G2 Cover/Ring/Sensor Assembly – Water Closet w/Zurn Ring
	<b>0325167</b>	EBV-150-A	G2 Cover/Ring/Sensor Assembly – Urinal w/Zurn Ring
2.	<b>0325168</b>	EBV-142-A	Cover Assembly
3.	<b>0325172</b>	EBV-130-A	Override Button Assembly includes screws & hex wrench
	<b>0325170</b>	EBV-132-A	Screws (2) and Allen Wrench Only
4.	<b>0325169</b>	EBV-131	Lens Window Cover
5.	<b>0325804</b>	EBV-14	Locking Ring CP
	<b>0325210</b>	EBV-168	Locking Ring CP
6.	<b>3325524</b>	EBV-31-A	Locking Ring – for Zurn Valves
	<b>3325450</b>	EBV-129-A-C	G2 Electronic Module – Water Closet
	<b>3325451</b>	EBV-129-A-U	G2 Electronic Module – Urinal
7.	<b>0325171</b>	EBV-134	Cover Rest Plate
8.	<b>3325456</b>	EBV-145-A	Inside Cover Assembly (includes solenoid EBV-136-A)
	<b>3325089</b>	EBV-1010-A	Inside Cover Assembly (excludes solenoid)
9.	<b>3325453</b>	EBV-136-A	Solenoid (For G2 Modules only)*
10.	<b>SEE CHART NEXT PAGE</b>		Flex Tube Diaphragm Kit

\* Refer to Page 58 for instructions regarding solenoid replacement.

## ACCESSORIES

11.	<b>0325107</b>	EBV-91	Trimpot Adjustment Screwdriver
12.	<b>0305823</b>	EBV-22	Strap Wrench
13.	<b>0325170</b>	EBV-132-A	Allen Wrench

## VALVE COMPONENT PARTS

14.	<b>3323182</b>	V-651-A	Vacuum Breaker Repair Kit
15.	<b>0393004</b>	V-600-AA	3/4" x 9" CP Vacuum Breaker
	<b>0393006</b>	V-600-AA	1-1/4" x 9" CP Vacuum Breaker
	<b>3393007</b>	V-600-AA	1-1/2" x 9" CP Vacuum Breaker
16.	<b>0306125</b>	F-5-AW	3/4" CP Spud Coupling
	<b>0306140</b>	F-5-AU	1-1/4" CP Spud Coupling
	<b>0306146</b>	F-5-AT	1-1/2" CP Spud Coupling
16A.	<b>SEE SLIP JOINT GASKETS AND RINGS TABLE ON NEXT PAGE</b>		
17.	<b>0308676</b>	H-550	CP Stop Coupling
18.	<b>0308801</b>	H-551-A	CP Adjustable Tailpiece 2-1/16" long
19A.	<b>5308696</b>	H-553	O-ring – 24 per package
19B.	<b>5308381</b>	H-552	Locking ring – 12 per package
20.	<b>3308386</b>	H-700-A	1" Screwdriver Bak-Chek® Stop CP – complete
	<b>3308384</b>	H-700-A	3/4" Screwdriver Bak-Chek® Stop CP – complete
21.	<b>3308853</b>	H-541-A	Control Stop Repair Kit †
	<b>3308856</b>	H-543-A	Control Stop Repair Kit † 3/4" H-540/H-600 only
22.	<b>0308612</b>	H-622	CP Bonnet †
	<b>0308843</b>	H-577	CP Bonnet † – <b>OBSELETE</b>
23.	<b>3308772</b>	H-1010-A	Vandal Resistant Control Stop Cap Assembly †
	<b>3308790</b>	H-1009-A	Vandal Resistant Control Stop Cap Assembly †
24.	<b>3325816</b>	EBV-1019-A	3/4" Decorative Stop Cap
	<b>3308866</b>	H-574	1" Decorative Stop Cap
25.	<b>3325814</b>	EBV-1017-A	Handle Cap — Metal
26.	<b>0311042</b>	K-46	Blind Nut Gasket

† For use with 1" and 3/4" H-700-A and 1" H-600-A Bak-Chek® screwdriver control stop

‡ For use with H-600-A 3/4" screwdriver Bak-Chek® control stops