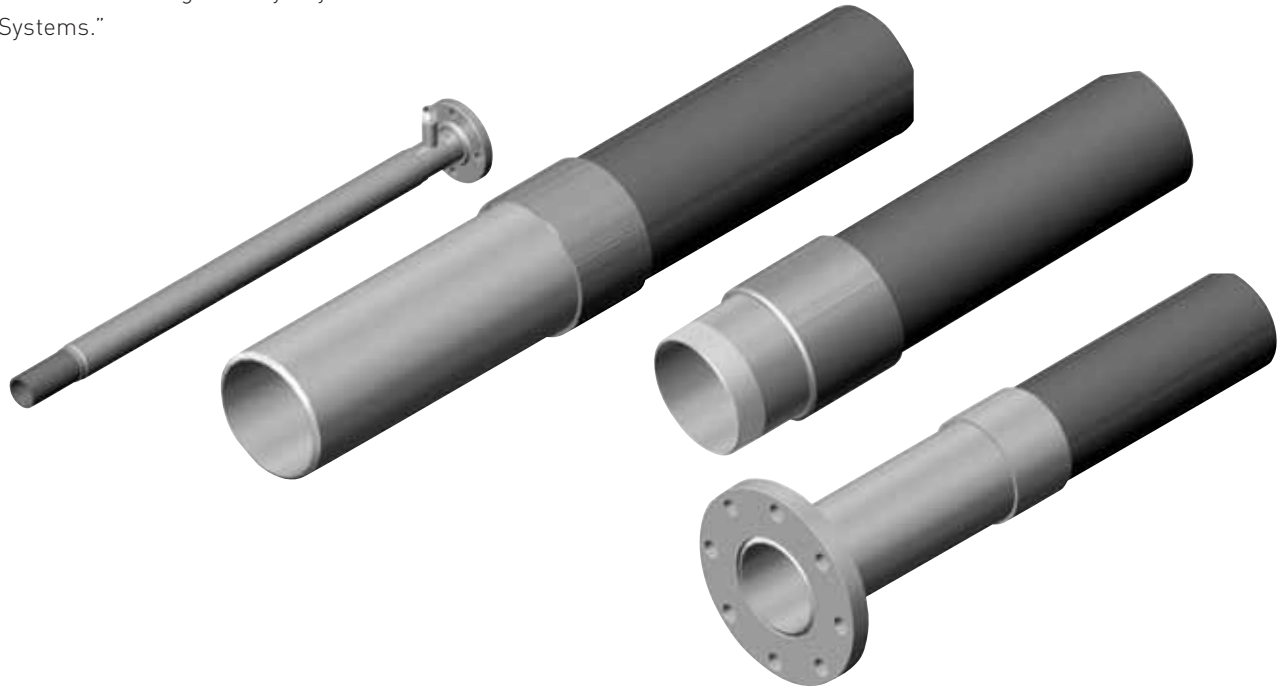


Risers and Transitions: Overview

All the PE-to-Steel transition joints used in Risers and Transition Fittings produced by Georg Fischer Central Plastics are designed to exceed the operating capabilities of the PE pipe in which it is installed. All joints, regardless of the market in which they are sold, are designed to meet or exceed ASTM D 2513 – Category 1 specifications as well as ASTM F1973.

ASTM D 2513, Category 1 specification requires that the fittings maintain a pressure-tight seal and able to maintain this seal while subjected to stresses that will cause the PE pipe to yield. Fittings used in applications where the expansion and contraction properties of PE pipe in addition to the normal stresses encountered during typical installations are mandated by most governing agencies to have a Category 1 rating.

Additionally, all Georg Fischer Central Plastics Risers and Transitions are designed to meet ASTM F1973 "Standard specification for Factory Assembled Anodeless Risers and Transitions Fittings in Polyethylene Fuel Gas Distribution Systems."



Risers & Transition Fittings

Risers and Transitions: Anodeless Risers

Since 1965, Georg Fischer Central Plastics has offered a complete line of Anodeless Meter Risers for residential and commercial applications. Anodeless Meter Risers offer a simple, reliable, factory manufactured method for transitioning PE pipe from below ground to an above ground piping system. The polyethylene pipe remains the gas carrier until it is above ground, thereby minimizing underground corrosion concerns as well as eliminating the need for cathodic protection.

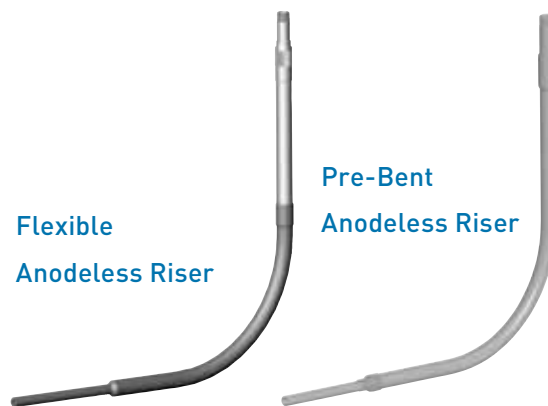
Anodeless Risers can be selected from a group of standard items or can be manufactured to meet the customer's specific requirements. A wide variety of options ensures that the need of the customer is met.

Features and Benefits

- PE-to-Steel transition joint is stronger than the PE pipe.
- Riser design utilizes an O-Ring for added security for extreme conditions.
- No gas-carrying welds are utilized in the riser design.
- All products are protected with an electrostatically-applied fusion-bonded epoxy powder coating specifically designed for the exterior of gas petroleum pipelines.
- Risers can be manufactured to meet custom specifications.
- No Cathodic protection required.
- Factory pre-assembly and bundling options available.
- Specialized inventory programs available.



Anodeless Riser w/Extended Length of PE Pipe



Flexible Anodeless Riser

Pre-Bent Anodeless Riser

Risers and Transitions: Anodeless Risers (continued)

Available Options

Riser Style

- Pre-bent
- Pre-bent w/extended length of PE pipe
- Straight
- Straight w/fused pup
- Flexible
- Steel x flex

Outlet options

- Threaded
- Beveled for welding
- Flanged
- By-pass outlets

Pipe coatings

- Fusion bonded epoxy
- Fusion bonded polyester

Custom dimensions

- Custom vertical dimensions
- Custom horizontal dimensions
- Inlet pe pipe ½" CTS to 12" IPS
- Outlet steel size ½" NPT to 12" NPT
- PE pigtail length from 6" to 250'

Other options

- Tracer wire connectors
- Factory installed gas valve
- Factory installed mechanical connector
- Sch 40 and Sch 80 pipe nipple
- Shear protection sleeves
- UV protection sleeves
- Mounting brackets, stakes, and wall brackets
- Special packaging and labeling
- Metric sizes available
- Sch 40 and thin-wall tubing for casing
- Pressure seal on horizontal end

Testing and Compliance

All GF Central Plastics risers meet or exceed the following applicable standards and are subjected to an extensive testing program to ensure consistent performance in the field that is safe, robust and reliable.

- DOT Code of Federal Regulations, Title 49, Part 192
- ASTM D2513 - Standard Specification for Thermoplastic gas pressure pipe, tubing, and fittings qualified Category 1 requirements
 - ASTM D1598 - Test Method for Time to Failure of plastic pipe under constant internal pressure (Sustained Pressure Test)
 - ASTM D1599 - Test Method for resistance to short term hydraulic pressure of plastic pipe, tubing and fittings (Quick Burst)
 - ASTM D638 - Test Method for Tensile Testing
- ASTM F1973 - Standard Specification for Factory Assembled Anodeless Risers and Transition Fittings.
 - ASTM E515 - Test Method for Leak Testing
 - ASTM D638 - Test Method for Tensile Testing
 - ASTM F1588 - Test Method Constant Tensile Load Test- ASTM F1973, 7.4 - Test Method for Temperature Cycling Test
- Complies with CSA B137.4
- Listed with IAPMO/UPC (where applicable)

Technical Specifications

- Steel gas carrier - ASTM A53/API5L
- Pipe threads - ANSI B1.20.1
- Steel compression ring - ASTM A513
- Buna O-ring seal - ASTM D2000
- Protective coating

All parts are protected with an electrostatically applied fusion-bonded epoxy powder coating specifically designed for the exterior of gas petroleum pipelines.

- 8 mil minimum thickness
- AGA 49 grey
- Cathodic disbondment testing per ASTM G8
- Salt spray testing per ASTM B117
- Impact resistance testing per ASTM G14

Anodeless Risers: with PE2406/PE2708 Pipe



COMMERCIAL Anodeless Risers w/PE2406/PE2708 Pipe

Size	Description	Part Number	Wt.	Box / Pallet
1¼" MPT × 1¼" IPS	DR10 30V × 30H	6380293	10.00	6 / 84
1¼" MPT × 1¼" IPS	DR10 30V × 30H w/STAB	6360473	11.50	6 / 84
1¼" MPT × 1¼" IPS	DR10 36V × 24H	6380294	10.00	6 / 84
1½" MPT × 1½" IPS	DR11 30V × 24H	6380305 ✓	12.00	4 / 56
1½" MPT × 1½" IPS	DR11 36V × 26H	6380296	12.00	4 / 56
2" MPT × 2" IPS	DR11 36V × 34H	6380295	19.00	15 / 15
2" MPT × 2" IPS	DR11 36V × 34H w/STAB	6380262	21.00	15 / 15
2" MPT × 2" IPS	DR11 48V × 36H	6380272	23.00	15 / 15
2" MPT × 2" IPS	DR11 30V × 30H STUB ELL	6381012	18.00	2 / 28
2" MPT × 2" IPS	DR11 36V × 24H STUB ELL	6380177	18.00	2 / 28
2" MPT × 2" IPS	DR11 56" STEEL STRAIGHT	10002746	19.00	100 / 100
2" MPT × 2" IPS	DR11 36V × 34H FLANGED	10001228	23.00	10 / 10
3" MPT × 3" IPS	STUB 30" STEEL	6381013	31.40	1 / 24
3" MPT × 3" IPS	STUB 30" STEEL w/STAKE	6381015	31.40	1 / 24
3" MPT × 3" IPS	30" STEEL FLANGED	6381017	36.00	15
3" MPT × 3" IPS	42V × 24H STUB ELL	6381011	34.76	16 / 16
3" MPT × 3" IPS	STUB 42V × 24H FLANGED	10001419	40.00	15
4" MPT × 4" IPS	STUB 30" STEEL	6381014	40.00	1 / 24
4" MPT × 4" IPS	STUB 30" STEEL w/STAKE	6381016	43.00	1 / 20
4" MPT × 4" IPS	30" STEEL FLANGED	6381018	50.00	1 / 24
4" MPT × 4" IPS	42V × 24H STUB ELL	6381010	41.78	12 / 12
4" MPT × 4" IPS	42V × 24H FLANGED ELL	10001907	31.78	12 / 12
6" MPT × 6" IPS	40" STEEL FLANGED	10001275	70.00	1 / 4

Protective sleeves are available on request.

Please call for sizes and prices.

GF Central Plastics offers thousands of different riser configurations.

The configurations listed here are our standard stocking sizes.