

## MULTI-TURN BEVEL GEAR OPERATOR

FNW can supply any multi-turn valves, such as gate and knife gate valves, with bevel gear operators. For the stock operators below, FNW can supply various accessories such as square drive nuts, hand wheel extensions, spur gear reduction, hand wheel locking devices, chain wheels, and stem covers. Call FNW for your specific gear operator requirements.

### Features

- Rugged Ductile Iron Housing & Base
- Durable Carbon Steel Bevel Gear & Pinion
- Welded Steel Tube Hand Wheel
- Hand Wheel Speed Handle
- Keyed Hand Wheel Connection
- Threaded & Set Screwed Top Facilitates Stem Covers
- Grease Fitting

### Standards

- Mounting Flange: ISO 5210



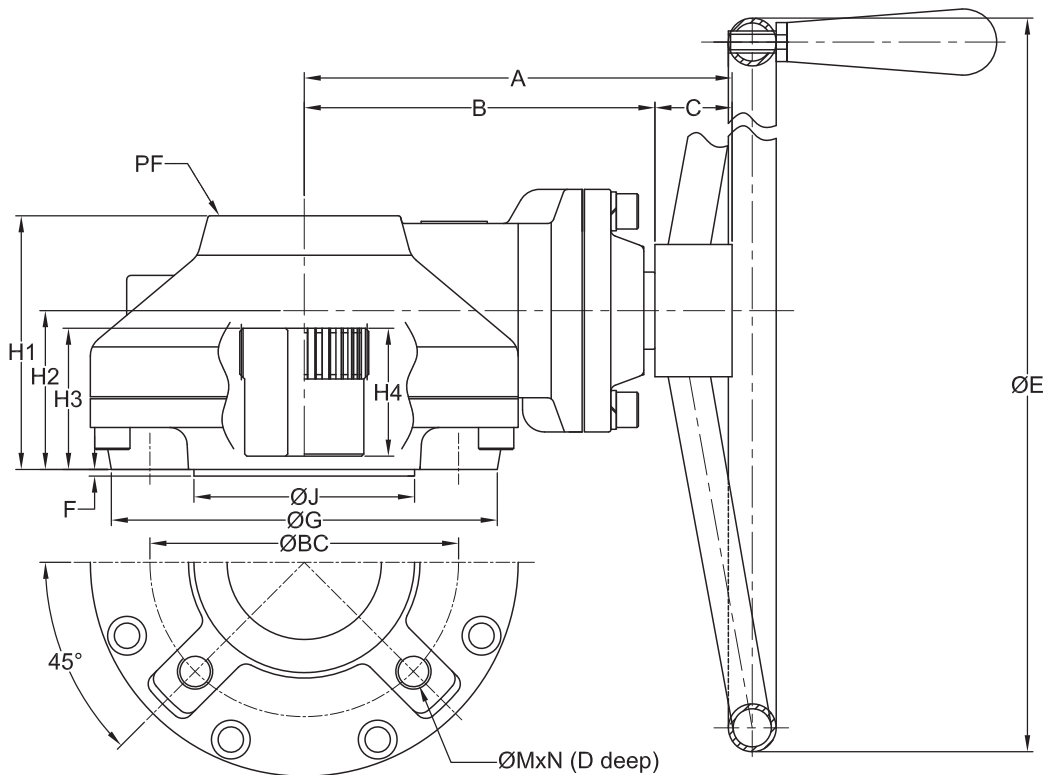
### Mechanical Specifications

Model	Gear Ratio	Max. Thrust (lbs)	Maximum Torque (ft-lbs)		Mechanical Advantage	Maximum Stem Diameter (in)		ISO Mounting Flange	Weight (lbs)
			In	Out		Threaded	Keyed		
B3	3.5 : 1	28,420	158	507	3.2	1.81	1.50	F14	45.5
B5	4.0 : 1	42,741	320	1151	3.6	2.44	2.16	F20	91

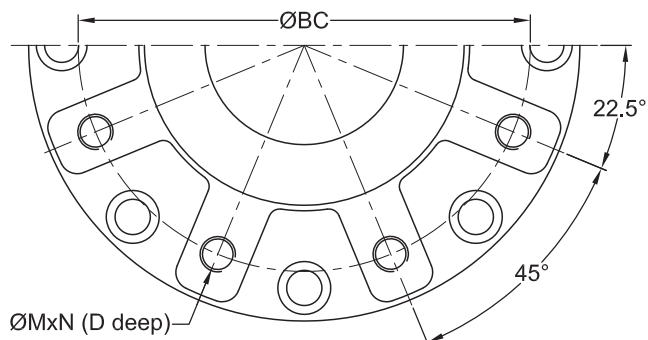
### Part Number

Model	Part Number
B3	FNWBGTM B3
B5	FNWBGTM B5

## MULTI-TURN BEVEL GEAR OPERATOR



**SIZE B3**



**SIZE B5**

### Standard Materials

Part No.	Description	Material
1	Housing	Ductile Iron ASTM A536 Gr. 65-45-12
2	Base	Ductile Iron ASTM A536 Gr. 65-45-12
3	Bevel Gear	Carbon Steel ASTM A576-1045
4	Bevel Pinion	Carbon Steel ASTM A576-1045
5	Drive Sleeve	Ductile Iron ASTM A536 Gr. 65-45-12
6	Drive Bushing	Bronze ASTM B584-C86200

### Dimensions (inches)

Model	A	B	ØC	ØE	F	ØG	ØJ	H1	H2	H3	H4	BC	ØM	D	N	PF (Straight)
B3	7.64	6.26	1.38	15.75	0.12	6.89	3.94	4.53	2.83	2.52	2.28	5.51	5/8-11	0.79	4	2-1/2" - 11
B5	9.17	7.80	1.38	24.80	0.12	9.65	5.51	6.02	4.09	3.58	3.15	8.07	5/8-11	1.18	8	3" - 11