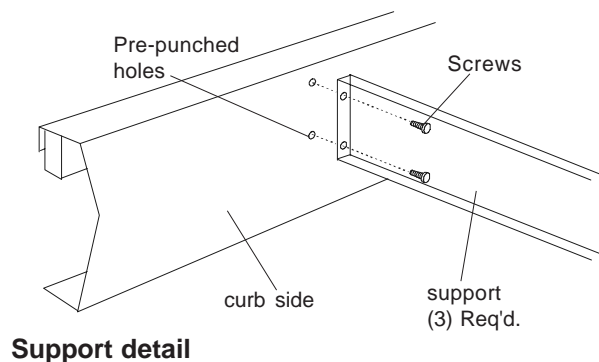
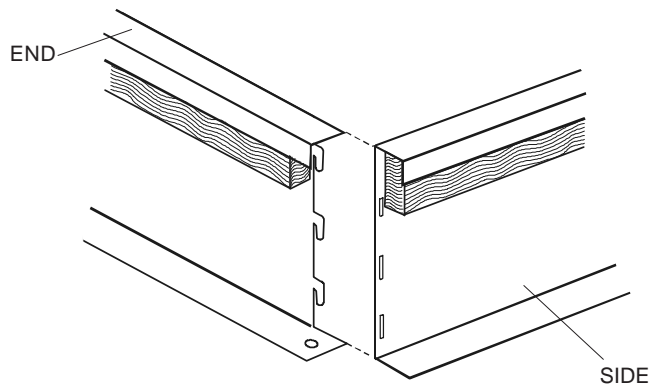


MicroMetl accessories simplify and minimize installation procedures on rooftop applications. Read these instructions completely before beginning. These installation instructions pertain to the 0572 series roofcurbs, the corresponding concentric package, ducts and diffusers.

Care must be exercised in locating the unit's roofcurb and roof opening. The HVAC system should cross enough roof supports to safely distribute the system's weight over the roof.

ILL.#1



INSTRUCTIONS:

1. Unpackage curb and locate all parts.
2. Bring together (1) curb side and (1) curb end. Insert tabs on curb end into slots on curb side. Press together until tab locks in place. It may be necessary to firmly step on top of curb end to lock tab in place. Repeat for all (4) corners.
3. If lifting curb after it has been assembled, hammer all corner tabs over to side.
4. Install (3) long supports on duct end of curb (see next page for dimensions). Now install (2) shorter duct support.
5. Install (2) deck pans on compressor end of curb.
6. Square up curb by measuring diagonally across curb corners. Set curb in place over roof opening.
7. Manufacture duct and drop onto curb. Install gasketing around top perimeter of curb and around top duct flanges.

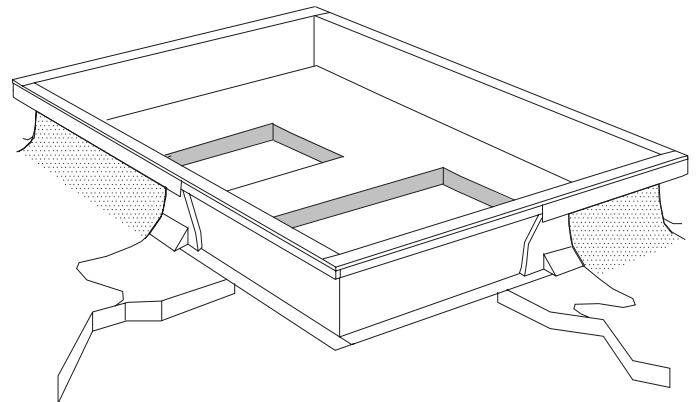


Illustration #3

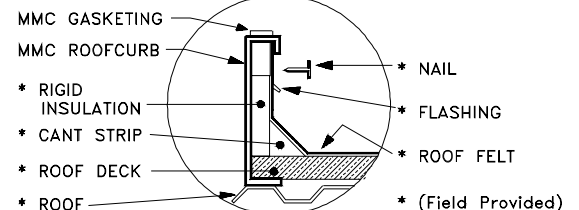
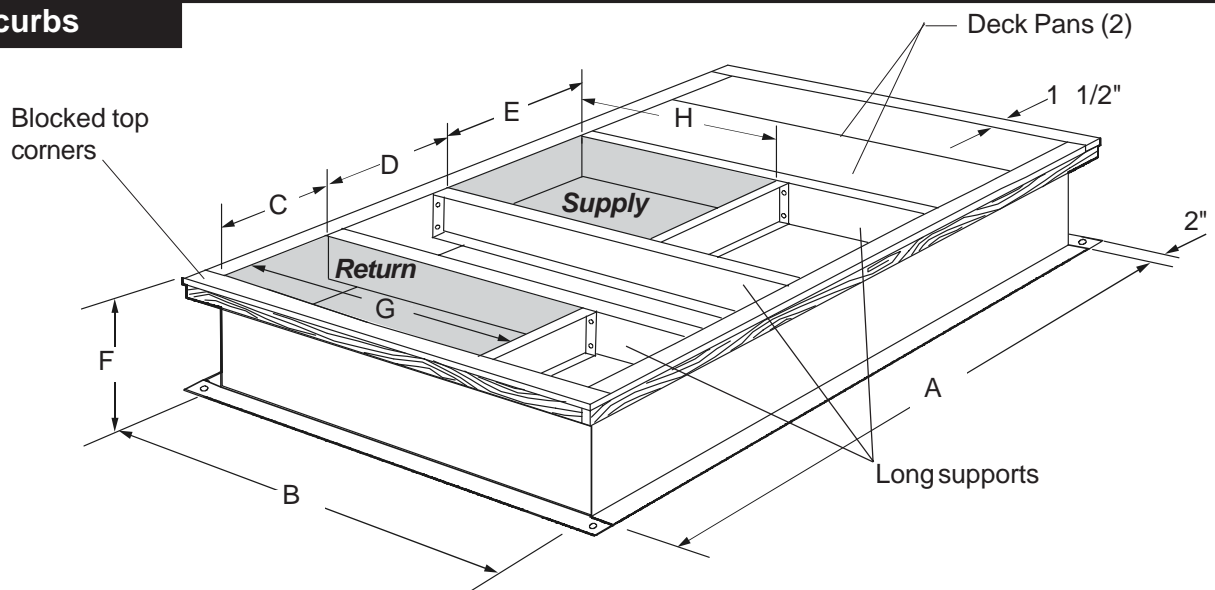


Illustration #4

ROOFING DETAIL

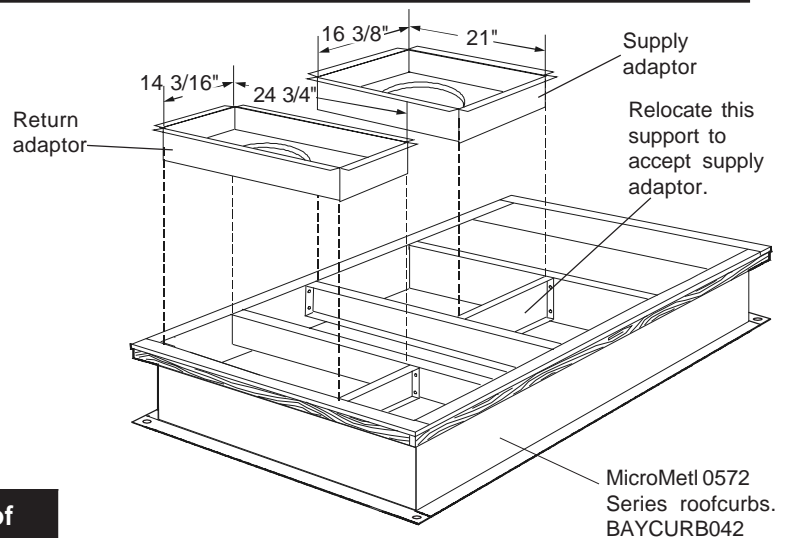
0572 Roofcurbs



Roofcurb Specifications (in inches)

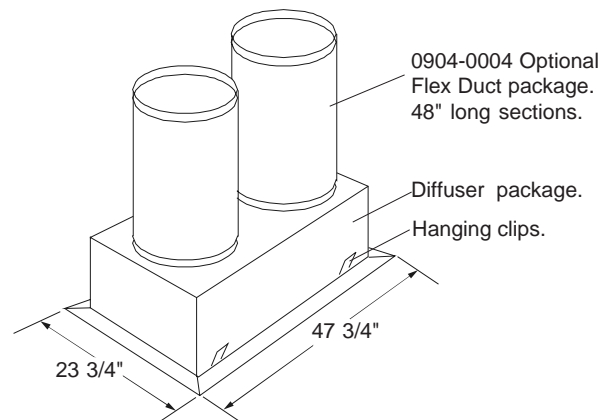
MicroMetl Part No.	Trane Curb No.	A	B	C	D	E	F	G	H
0572A-014A	BAYCURB042A	61.76"	37.42"	14.55"	8.38"	16.70"	14	25.18"	18.88"
0572A-018A	N/A						18		
0572A-024A	N/A						24		

Flex duct concentric packages



Flex Type Concentric package consists of Concentric Adaptor and Diffuser package

Concentric Adaptor / Diffuser Package P/N	Description
7017-722A	Flush mount diffuser and concentric adaptor
7018-722A	Drop diffuser and concentric adaptor



ADJUSTABLE PITCH / ADJUSTABLE HEIGHT CURBS INSTRUCTIONS

This MicroMetl Adjustable Pitch Curb is for roofs with pitches up to 1" in 12".

1. Unpackage roofcurb. Separate parts for top section, bottom section and decks / supports.
2. **Bottom section:** Assemble the (2) sides and (2) ends. The attachment flanges on the ends go to the inside of the sides.

Use (2) 3/4" long tek screws in each corner to assemble. The screws are inserted from outside the curb inwards.

3. **Top section:** Assemble the (2) sides and (2) ends. The attachment flanges on the ends go to the inside of the sides.

Use (3) 3/4" tek screws in each corner to assemble. The top screw will go into the wood nailer. The screws are inserted from inside the curb outward.

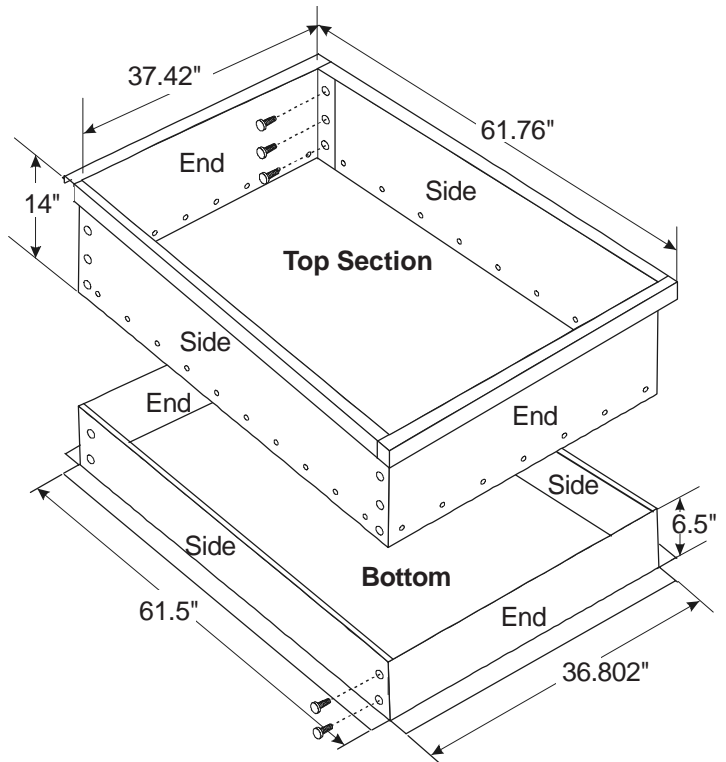


Figure 1

4. Install the deck pans and duct supports to the top of the top section. See Figure 2. Gasket the top 1 1/2" perimeter and around the duct openings.

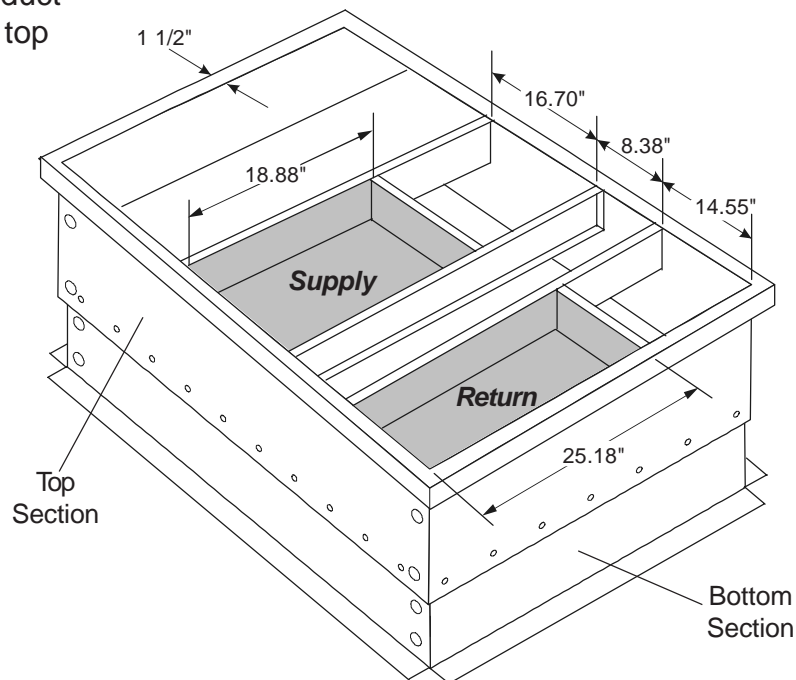


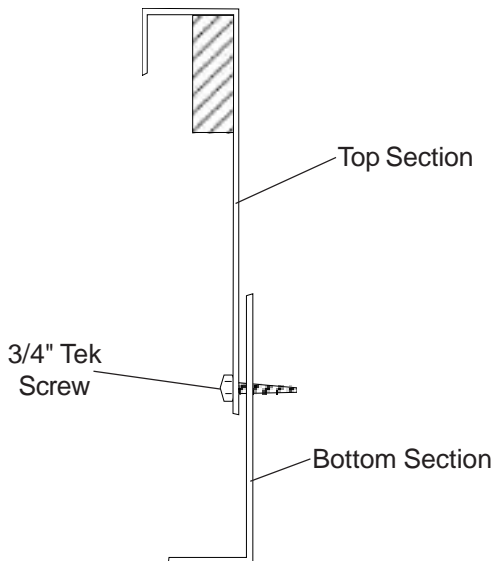
Figure 2

ADJUSTABLE PITCH / ADJUSTABLE HEIGHT CURBS (CONT.)

5. Locate the bottom section assembly over the roof openings. The roof opening sizes listed in the HVAC unit specifications are appropriate (unless using a hard duct type concentric diffuser package). Secure the bottom section to the roof.
6. Slide the top section over the bottom section. Level the top section and prop-up in place.

NOTE:

This curb can be used on roofs with a pitch up to 1" in 12". If curb is pitched on the short side, the roof pitch can be even greater.



**Figure 4
Detail**

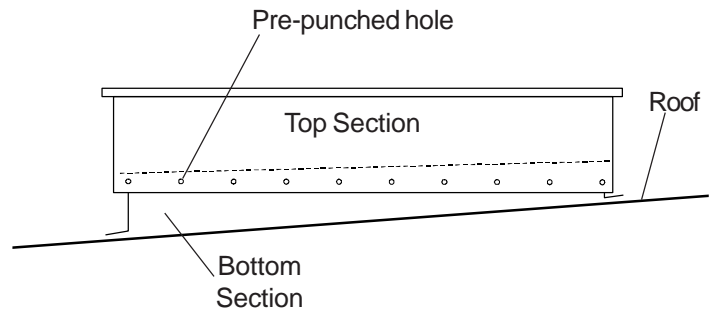


Figure 3

7. Through the pre-punched holes along the bottom base of the top section, insert 3/4" tek screws. This will secure the top section to the bottom section.

The pre-punched holes are 6" apart. **It is important that you install the screws through every hole.**

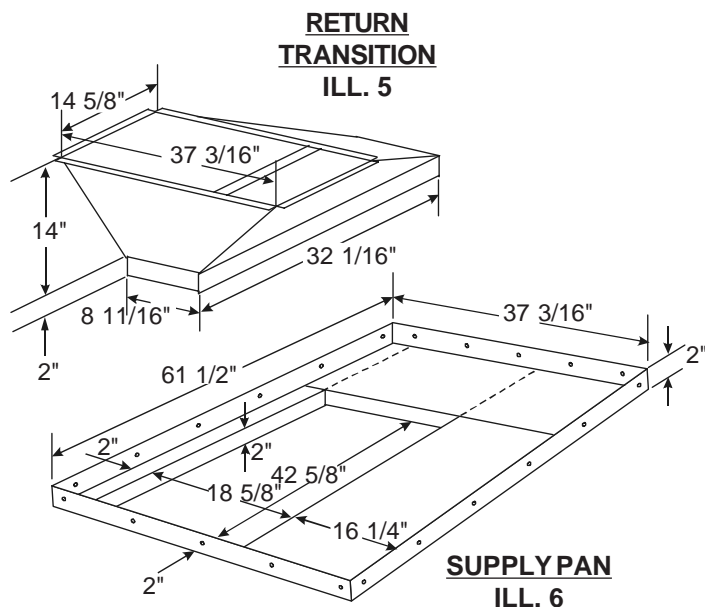
8. Roof in the curb according to the local or other appropriate codes.
9. Manufacture the supply and return duct according to the dimensions shown in Table 2.

Hard duct concentric instructions:

1. Follow roofcurb installation instructions. Do not install duct supports as they will not be used. Also, do not install deck pans until concentric adaptors have been installed.
2. Assemble the supply pan assembly, per ILL. 6. Install the supply pan assembly into the curb. Supply pan will set all the way at the bottom of the curb, see ILL. 7 & 9. Screw pan assembly to curb.
3. Assemble the return transition.
NOTE: Insulation is on the inside. See ILL. 5. Install return transition into roofcurb, ILL. 8 & 9. Top of transition will hang from top of curb.
4. Duct kits may be field-cut to length, as required.
5. Secure return air duct to return air collar on diffuser.
Secure supply air duct to supply air collar on diffuser
6. Hoist diffuser/duct assembly into position and support as shown in Fig. 3 (on page 4). Attach duct kit to transition assembly. Tape and caulk as required. See page 4 for hanging details.
7. Install gasketing on roofcurb and set unit in place.

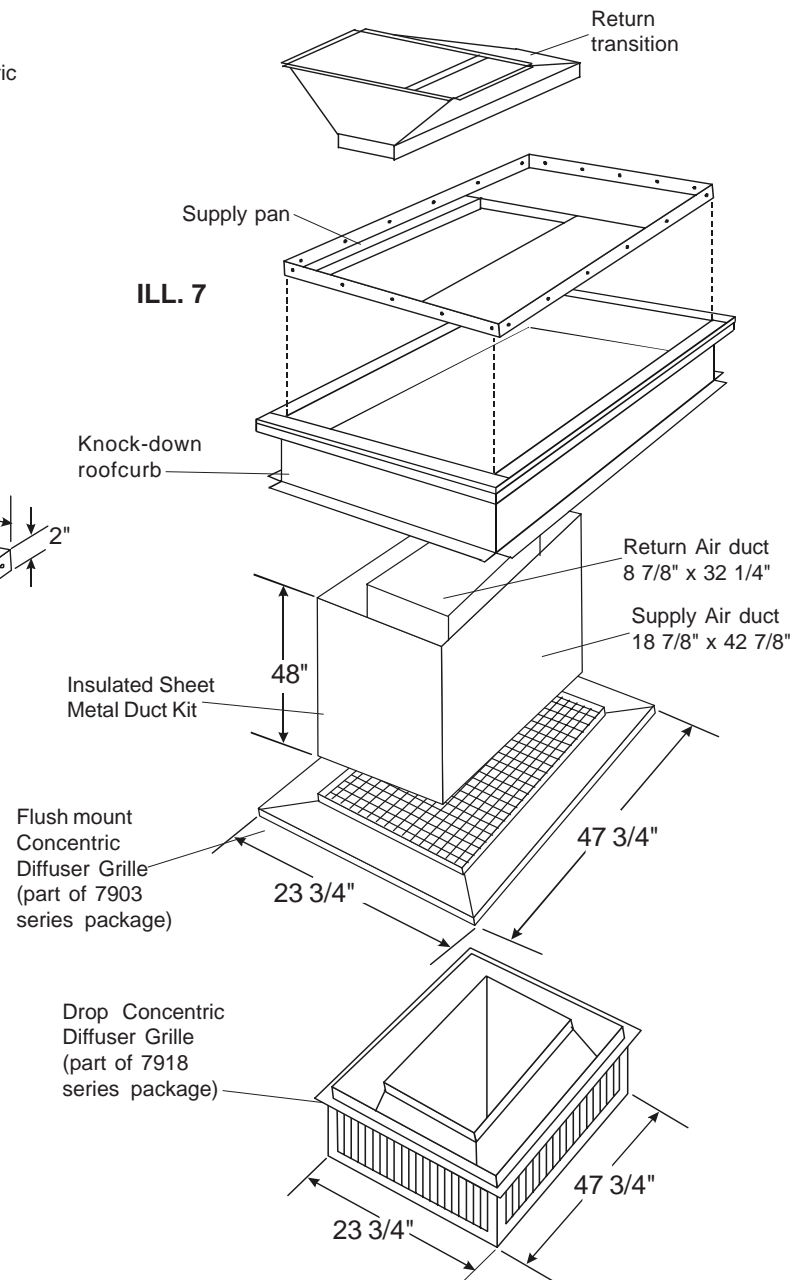
Hard duct type concentric packages

Hard Duct Type Concentric Transition package (Includes both the return and supply air transitions, sheet metal duct kit and concentric diffuser grille).

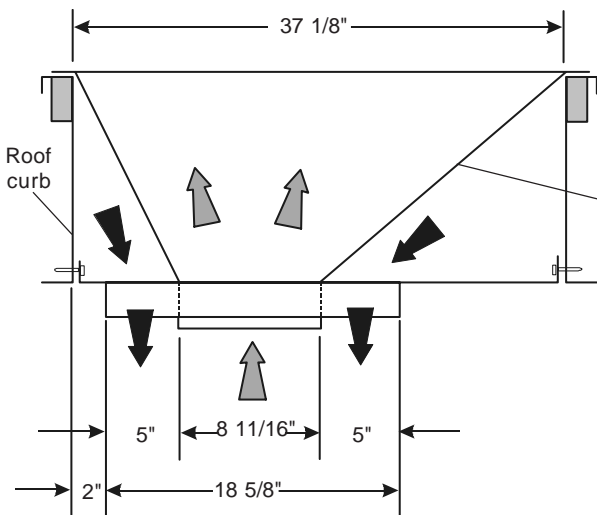


IMPORTANT NOTE:

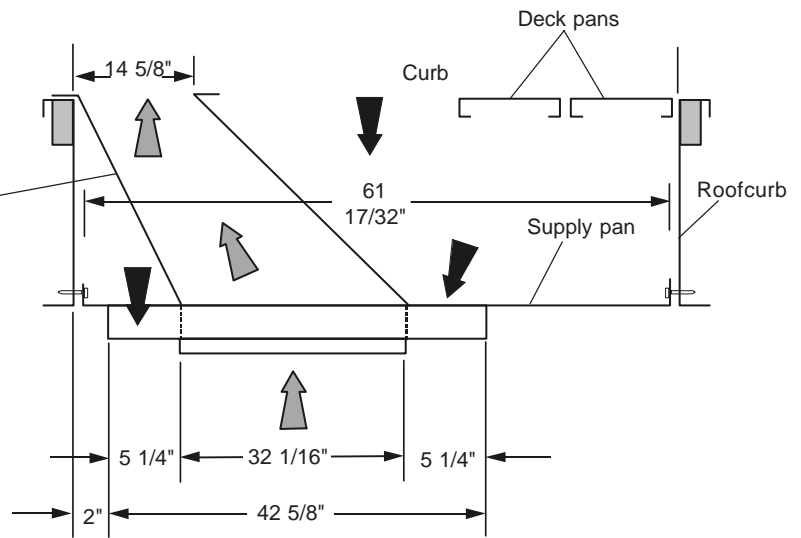
To accommodate hard duct concentric package, roof opening must be 20" x 44".



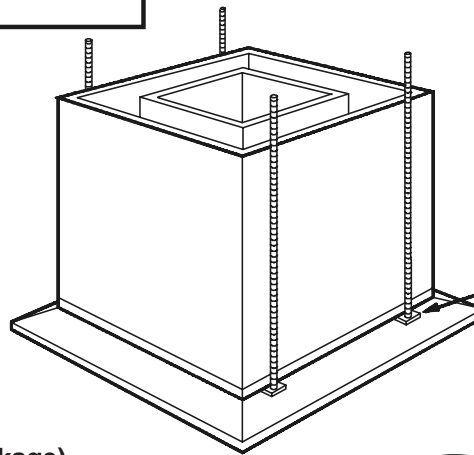
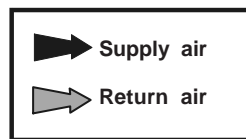
Hard type duct package assembly & details



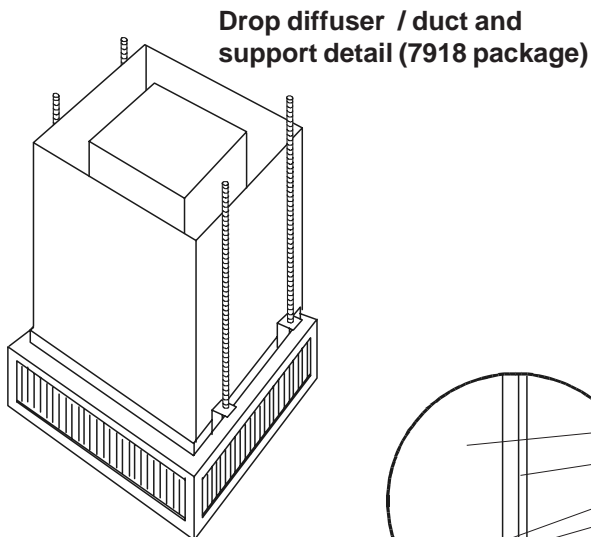
END VIEW
ILL. 8



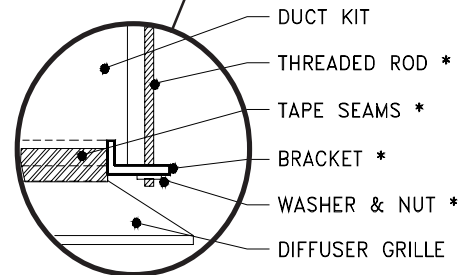
SIDE VIEW
ILL. 9



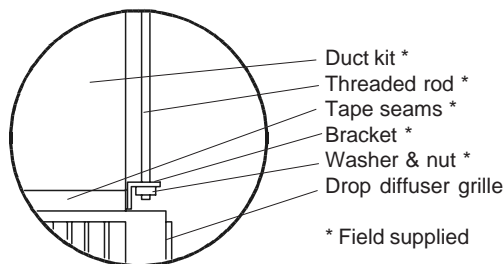
**FLUSH MOUNT DIFFUSER/
DUCT AND SUPPORT
DETAIL (7903 package)**



**Drop diffuser / duct and
support detail (7918 package)**



BRACKET DETAIL * (Field Supplied)



* Field supplied

BRACKET DETAIL

MMC Indianapolis, IN

MMC West Sparks, NV

Manufacturer reserves the right to discontinue, or change at any time, specifications, designs and prices without notice and without incurring obligations.

Form No. 2838-2P

Copyright MicroMetl Corporation 2001. All rights reserved.