

TH-5034 (3/4" THERMAX THERMOSTATIC VALVE AND TRIM)

1

VALVE BODY

SLEEVE

PROJECTION ON THE SLEEVE

GROOVE ON THE VALVE BODY

2

SLEEVE IS ON THE VALVE BODY FULLY

TEMPERATURE LIMITER

HANDLE TRIM

AA 00TH-AA*	AC 00TH-AC*	BF 00TH-BF*	CA 00TH-CA*	CC 00TH-CC*
CD 00TH-CD*	CN 00TH-CN*	CV 00TH-CV*	DD 00TH-DD*	DV 00TH-DV*
ER 00TH-ER*	FF 00TH-FF*	HH 00TH-HH*	JC SAME AS TL*	LA PH-1111-1*
LC 00TH-LC*	LL 00TH-LL*	LM 00TH-LM*	LS 00TH-LS*	LV 00TH-LV*
ML 00TH-ML*	MX 00TH-MX*	NC 00TH-NC*	NL 00TH-NL*	NX 00TH-NX*
RE 00TH-RE*	RP 00TH-RP*	RX 00TH-RX*	SL 00TH-SL*	TL 00TH-NX*
TT 00TH-TT*	VL 00TH-VL*	VX 00TH-VX*	WE 00TH-WE*	WG 00TH-WG*
XL 00TH-XL*	XA 00TH-XA*	TD 00YY-TD	TX 00YY-TX	

3

Plate Mounting Screws

Wall

Temperature Dial

Numerical Dial Mounting Screw

Top View

CENTER MARK

90 100 110

4

Wall

Temperature Dial

Numerical Dial Mounting Screw

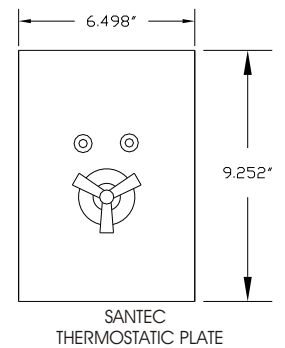
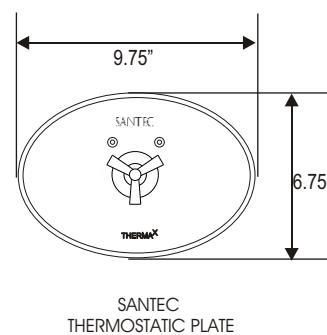
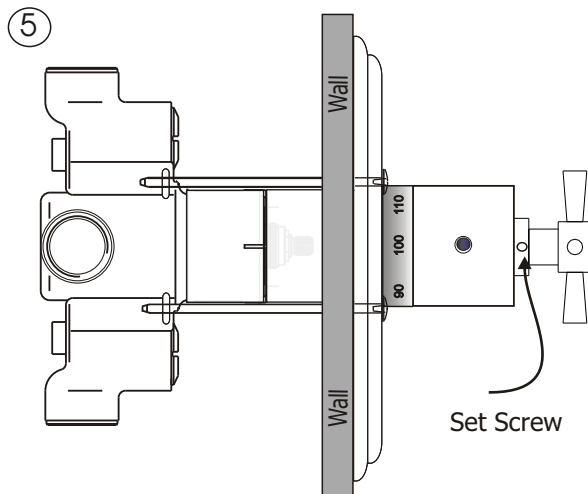
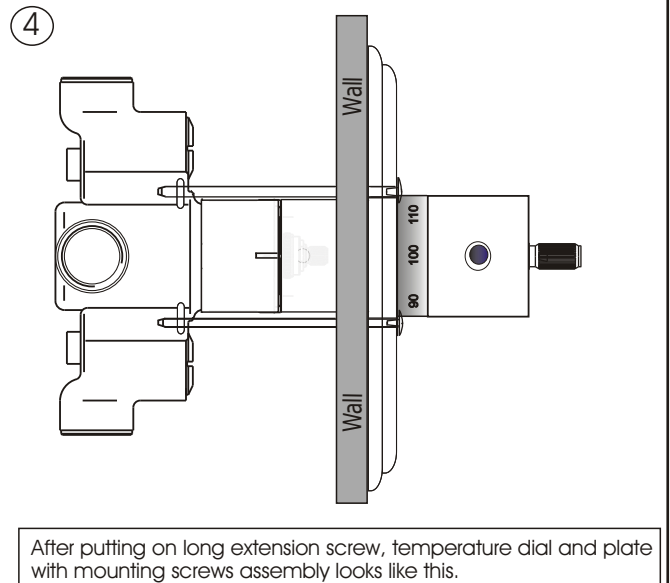
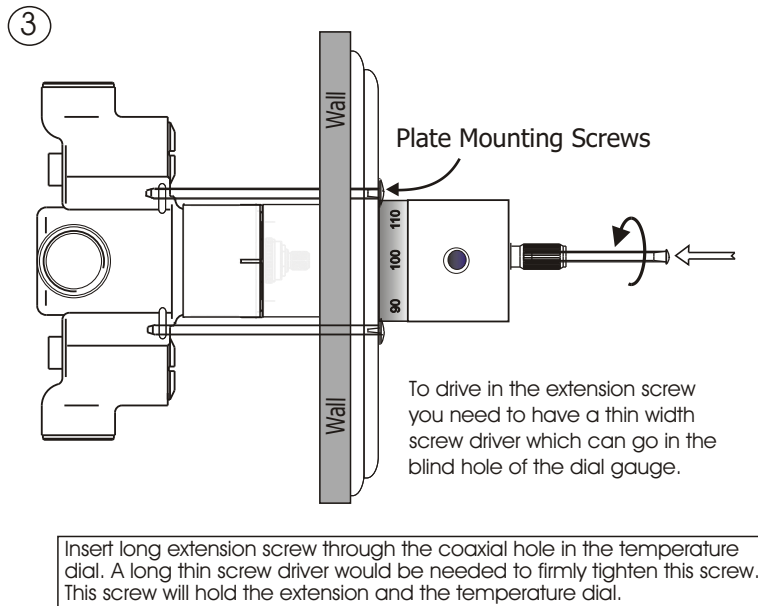
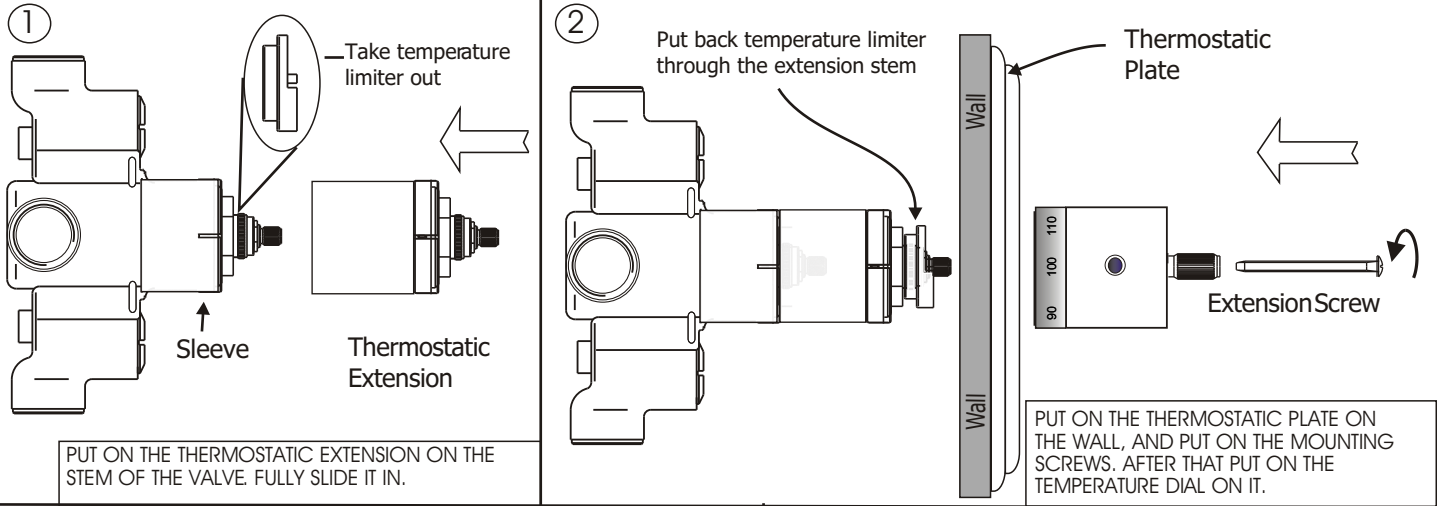
5

Wall

Set Screw

Allen key

TH-5034 (3/4" THERMAX THERMOSTATIC VALVE AND TRIM WITH OPTIONAL EXTENSION)



Santec Inc.
3501 Challenger Street, Torrance, CA 90503
Tel: (310) 542-0063 Fax (310) 542-5681
www.santecfaucet.com