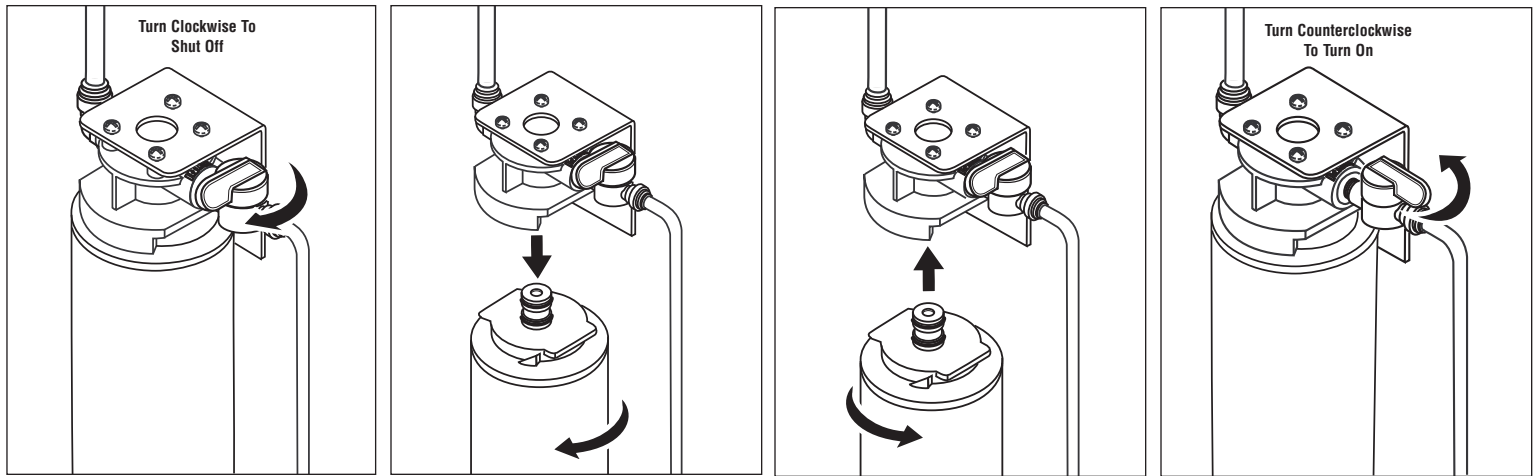


Replacement Cartridge Change Instructions

FM DWS 1500



1. Close the feed water valve and lift up the faucet handle. Wait approximately 10 seconds for the water pressure to depressurize. Return faucet handle to the off position.
2. Twist the filter cartridge 1/4 turn counterclockwise (as viewed from the bottom) so that the ears on the cartridge are able to disengage from the head. Firmly pull the cartridge downward to remove it from the head.
3. Remove the new filter cartridge from its sanitary sealed wrapper. (Double check to see that it is the correct replacement filter cartridge by comparing the labels.)
4. Using either tap water, food grade silicon lubricant or glycerine, lubricate the O-ring seals to make cartridge insertion easier. **Do not use petroleum jelly.**

5. Line up the cartridge ears, insert the cartridge and push it up into the head until it is fully seated. Twist the cartridge 1/4 turn clockwise to lock it into place.
6. Open the feed water valve and carefully check for leaks.
7. Lift up on faucet handle to purge air and carbon fines from the new filter cartridge. Flush 3 gallons through system before use (approximately 6 min).

NOTE: It is normal to have small air bubbles present in the product water for 1-2 days after installation and filter changes. This may result in cloudy filtered water.

It is recommended that cartridges be replaced every 6-12 months, depending on local water conditions and use.

System Location (Fig.1)

