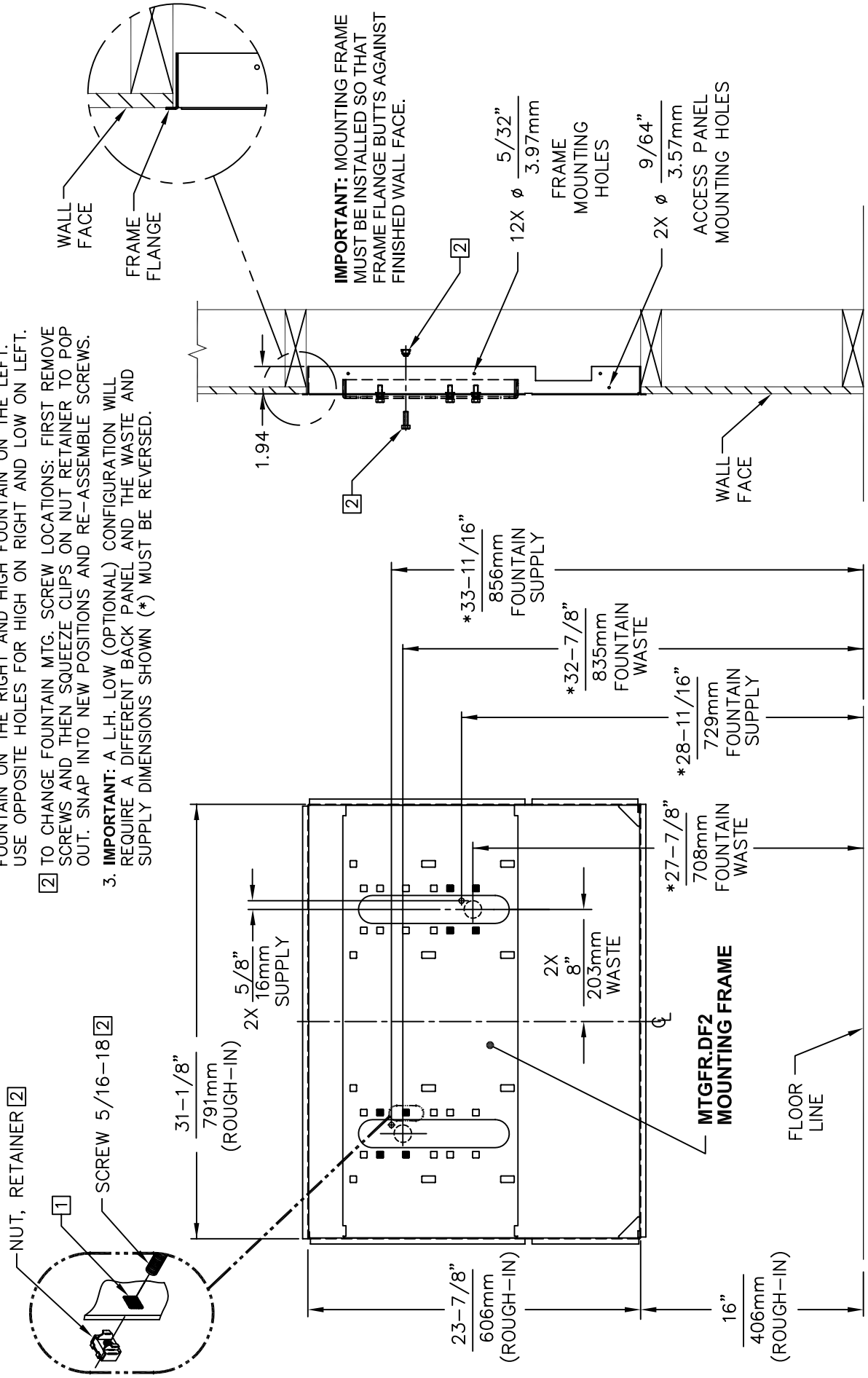


THIS DOCUMENT IS TRUE AND CORRECT AT TIME OF PUBLICATION. CONTINUED PRODUCT IMPROVEMENTS MAKE SPECIFICATIONS AND MEASUREMENTS SUBJECT TO CHANGE WITHOUT NOTICE.

NOTES:


- 1 HOLE COMBINATION SHOWN BELOW IS FOR USE WITH LOW FOUNTAIN ON THE RIGHT AND HIGH FOUNTAIN ON THE LEFT. USE OPPOSITE HOLES FOR HIGH ON RIGHT AND LOW ON LEFT.
- 2 TO CHANGE FOUNTAIN MTG. SCREW LOCATIONS: FIRST REMOVE SCREWS AND THEN SQUEEZE CLIPS ON NUT RETAINER TO POP OUT. SNAP INTO NEW POSITIONS AND RE-ASSEMBLE SCREWS.
- 3. **IMPORTANT:** A L.H. LOW (OPTIONAL) CONFIGURATION WILL REQUIRE A DIFFERENT BACK PANEL AND THE WASTE AND SUPPLY DIMENSIONS SHOWN (*) MUST BE REVERSED.



IMPORTANT: MOUNTING FRAME MUST BE INSTALLED SO THAT FRAME FLANGE BUTTS AGAINST FINISHED WALL FACE.

- 4. HOLD ROUGH-IN DIMENSIONS ± 1/8" (3.2mm).
- 5. WHEN INSTALLING THIS UNIT, LOCAL, STATE OR FEDERAL CODES SHOULD BE ADHERED TO. FOR INSTALLATION HEIGHTS OTHER THAN SHOWN, DIMENSIONS MARKED (*) MUST BE ADJUSTED ACCORDINGLY.

**FOR USE WITH MODELS:
1011MS & 1011HPSMS**



INFO FAX : 1-888-FAX-HAWS (1-888-329-4297)
 1455 Kleppe Ln, Sparks NV, 89431
 Phone: 775-359-4712 Fax: 775-359-7424
 Haws AG, Bachweg 3 CH-3401 Birsach, Switzerland
 Haws Mfg Pte Ltd, 74 Sungei Kadut Loop, Singapore 729531
 e-mail: haws@hawscc.com Website: www.hawscc.com

EST. NO.	REVISION PER	DATE	BY	DATE	APPROVED
	ECN: 4173	08/97			

MODEL(S): MOUNTING FRAME
 MTGFR.DF2
 INFO. FAX. DOC. # 26843732
 SCALE: 1:10 DRAWING TYPE: INSTALLATION/FABRACK

DRAWING NUMBER	0002080297
DRAWING NUMBER	13161C00
SIZE	A
SHEET	1 OF 1