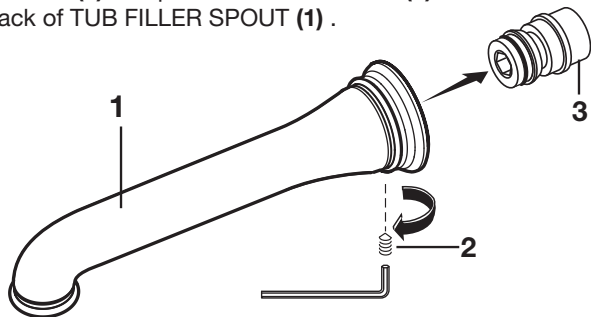


1 REMOVE SPOUT ADAPTER

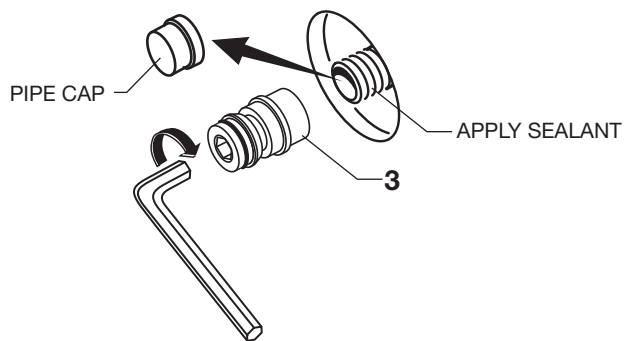
CAUTION: Protect finish on TUB SPOUT when installing.

- To install TUB FILLER SPOUT (1) first remove SET SCREW (2) and pull SPOUT ADAPTER (3) from back of TUB FILLER SPOUT (1).



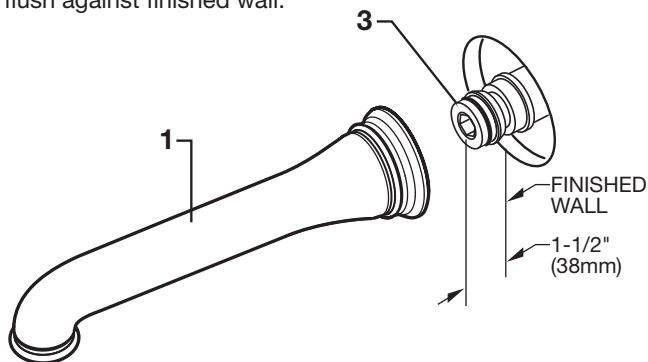
2 REMOVE PIPE CAP

- Remove PIPE CAP. Apply sealant to pipe nipple. With a 1/2" (12.7mm) hex wrench thread SPOUT ADAPTER (3) onto pipe nipple.



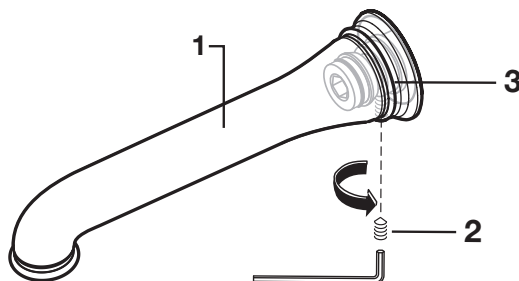
3 INSTALL SPOUT

- The SPOUT ADAPTER (3) should extend 1-1/2" (38mm) from finished wall.
- Push TUB FILLER SPOUT (1) onto SPOUT ADAPTER (3) flush against finished wall.



4 SECURE SPOUT

- Align spout and tighten SET SCREW (2) to secure TUB FILLER SPOUT (1) to SPOUT ADAPTER (3).



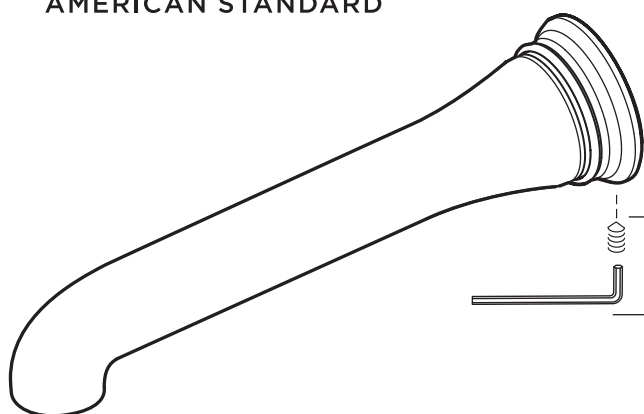
DXV

AMERICAN STANDARD

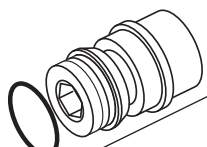
Randall™
Wall Tub Spout

MODEL NUMBER

D35102.760



M964583-0070A
SPOUT O-RING



M964587-0070A
1/2" x 3/4" SPOUT ADAPTER
(WITH 1/2" FLUSH BUSHING)

M964661-0070A
SET SCREW KIT

Replace the "YYY" with appropriate finish code

| | |
|-----------------|-----|
| POLISHED CHROME | 100 |
| BRUSHED NICKEL | 144 |
| PLATINUM NICKEL | 150 |



H961530-YYY0A
STREAM STRAIGHTENER