

INSTALLATION INSTRUCTIONS

Percy™ Handle Trim Kit for 2 Way or 3 Way In-Wall Diverter

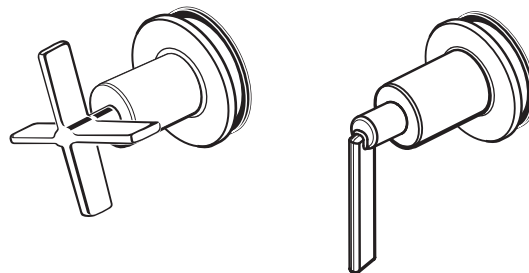
Cross Handle
Model D35105.434

Cylinder Handle
Model D35105.430

*Thank you for selecting DXV by American Standard.
To ensure that your installation proceeds smoothly,
please read these instructions carefully
before you begin.*



AMERICAN STANDARD



RECOMMENDED TOOLS AND MATERIALS

Most of the procedures require the use of common tools and materials, which are available from hardware and plumbing, supply stores. It is essential that the tools and materials be on hand before work is begun.



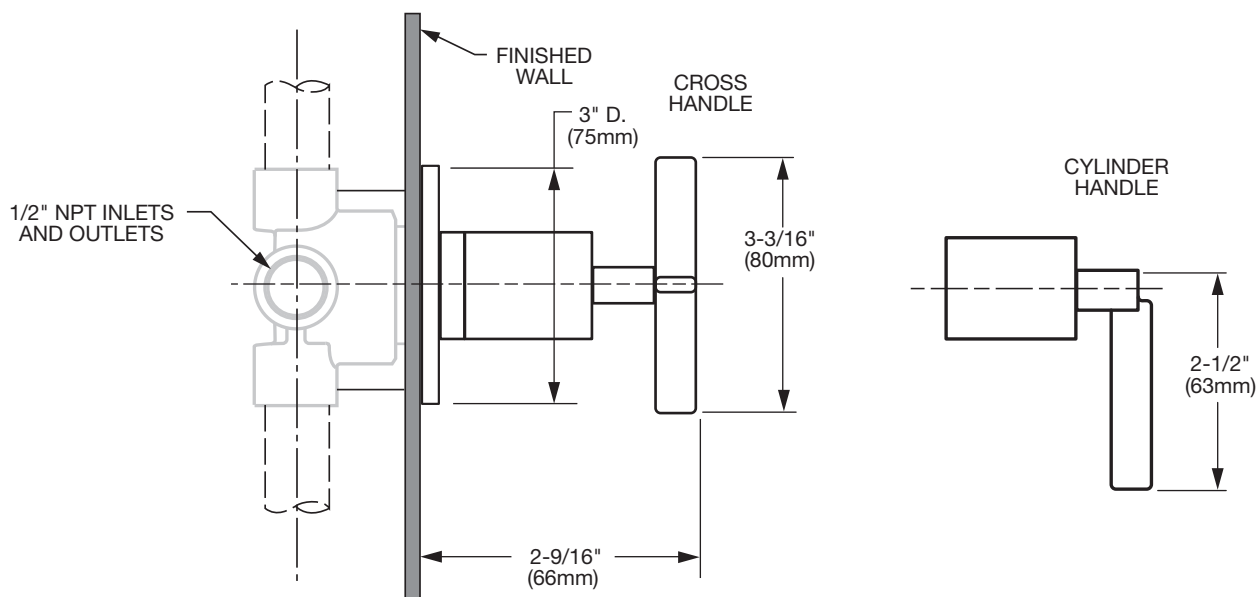
Channel Locks



Adjustable Wrench

ROUGHING-IN DIMENSIONS:

- For reference



In the United States:

DXV by American Standard
One Centennial Avenue
Piscataway, New Jersey 08855
Attention: Director of Customer Care

For residents of the United States, warranty information may also be obtained by calling the following toll free number: (800) 227-2734
www.DXV.com

In Canada:

DXV by American Standard
5900 Avebury Road
Mississauga, Ontario
L5R 3M3
Canada

Toll Free: 1-800-387-0369
Local: 905-306-1093
Fax: 1-800-395-1498
www.DXV.ca

In Mexico:

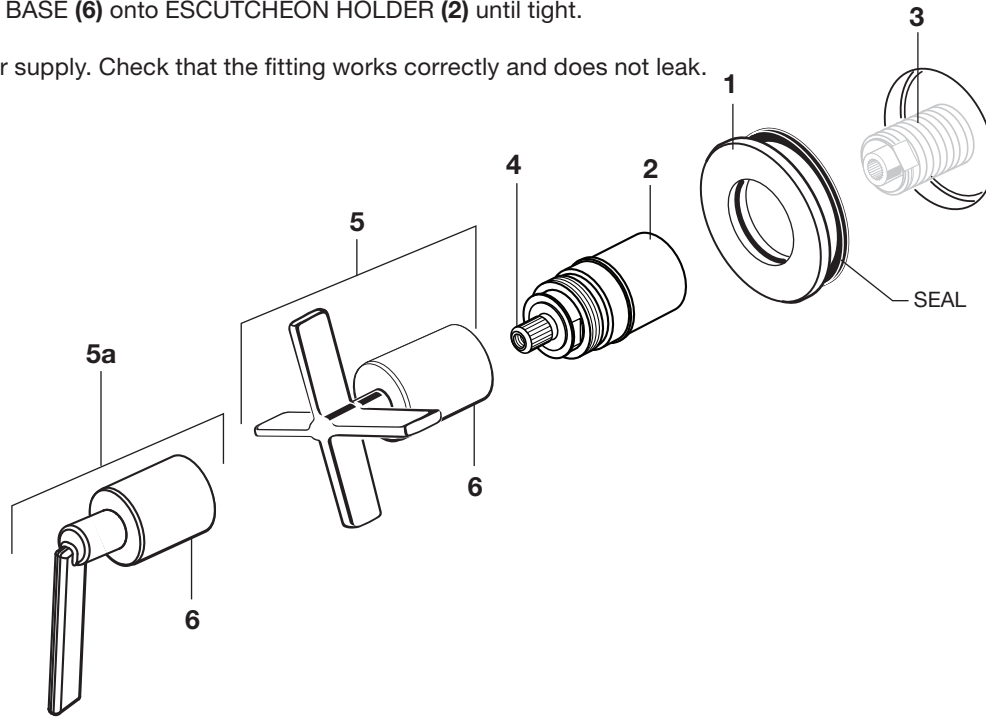
DXV by American Standard
Via Morelos 330
Col. Santa Clara Coatitla
Ecatepec, Estado de México 55540

Toll Free: 01-800-8391200
www.DXV.mx

SAVE FOR FUTURE USE

1 INSTALL HANDLE **CAUTION** Turn off hot and cold water supplies before beginning.

- Install ESCUTCHEON (1) onto ESCUTCHEON HOLDER (2). Thread ESCUTCHEON HOLDER (2) with ESCUTCHEON (1) onto DIVERTER VALVE (3) until ESCUTCHEON (1) is flush against finished wall.
- Align HANDLE as shown or as desired and install HANDLE ASSEMBLY (5, 5a) onto VALVE STEM (4).
- Thread HANDLE BASE (6) onto ESCUTCHEON HOLDER (2) until tight.
- Turn on the water supply. Check that the fitting works correctly and does not leak.



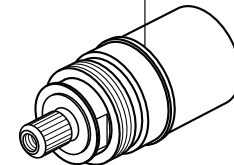
AMERICAN STANDARD

M964623-YYY0A
CYLINDER HANDLE

M964622-YYY0A
CROSS HANDLE

H960835.XXX
EXTENSION

M964750-YYY0A
ESCUTCHEON KIT



Percy™
Handle Trim Kit
for 2 Way or 3 Way
In-Wall Diverter

MODEL NUMBERS

Cross Handle
D35105.434

Cylinder Handle
D35105.430

Replace the "XXX" or "YYY"
with appropriate finish code

POLISHED CHROME	100
BRUSHED NICKEL	144

H2749.191
EXTENSION KIT