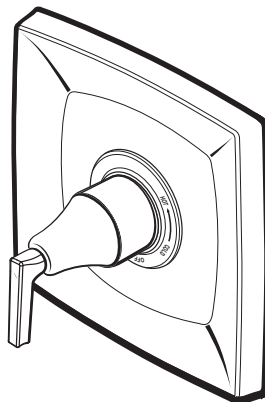


INSTALLATION INSTRUCTIONS

Keefe™ Pressure Balanced Shower Valve Trim Kit

Model D35104.500

Thank you for selecting DXV by American Standard.
To ensure that your installation proceeds smoothly,
please read these instructions carefully
before you begin.



AMERICAN STANDARD

RECOMMENDED TOOLS AND MATERIALS

Most of the procedures require the use of common tools and materials, which are available from hardware and plumbing, supply stores. It is essential that the tools and materials be on hand before work is begun.



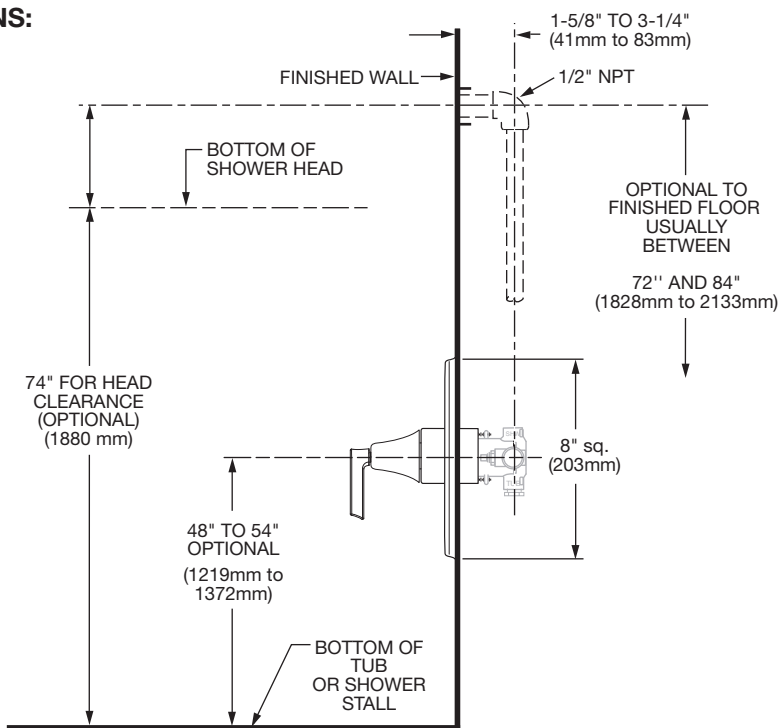
Phillips Screwdriver



Regular Screwdriver

ROUGHING-IN DIMENSIONS:

- For reference



In the United States:

DXV by American Standard
One Centennial Avenue
Piscataway, New Jersey 08855
Attention: Director of Customer Care

For residents of the United States, warranty
information may also be obtained by calling
the following toll free number: (800) 227-2734
www.DXV.com

In Canada:

DXV by American Standard
5900 Avebury Road
Mississauga, Ontario
L5R 3M3
Canada

Toll Free: 1-800-387-0369
Local: 905-306-1093
Fax: 1-800-395-1498
www.DXV.ca

In Mexico:

DXV by American Standard
Via Morelos 330
Col. Santa Clara Coatitla
Ecatepec, Estado de México 55540

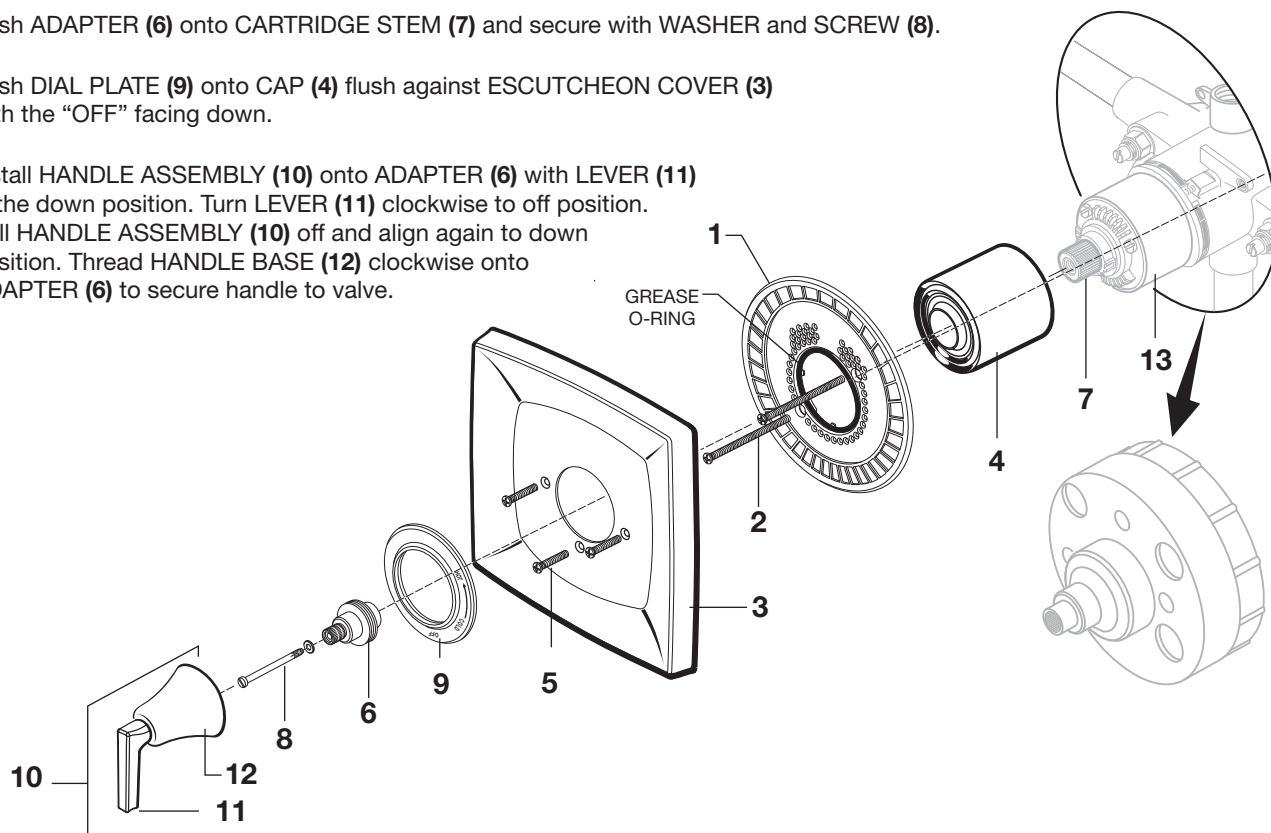
Toll Free: 01-800-8391200
www.DXV.mx

SAVE FOR FUTURE USE

1 INSTALL TRIM

CAUTION: Protect finish on **SHOWER ARM** and **SHOWER HEAD** when installing.

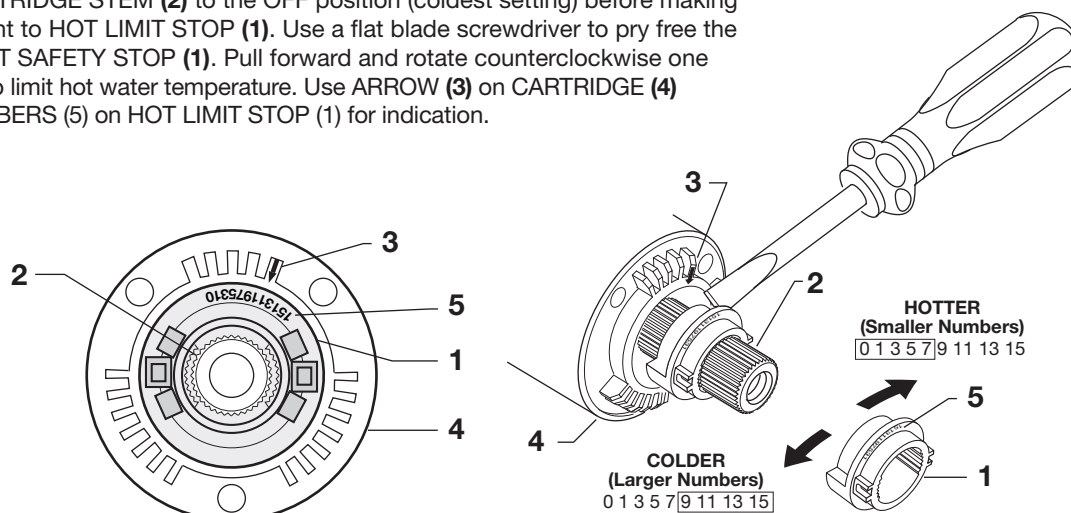
- Push **CAP (4)** over **VALVE CARTRIDGE (13)** until seated against stop.
- Mount **ESCUTCHEON HOLDER (1)** with gasket to fitting using two **LONG SCREWS (2)**. Push the **ESCUTCHEON COVER (3)** over **CAP (4)**. Align screw holes in **ESCUTCHEON COVER (3)** with holes in **ESCUTCHEON HOLDER (1)**. Fasten with three **MOUNTING SCREWS (5)**.
- Push **ADAPTER (6)** onto **CARTRIDGE STEM (7)** and secure with **WASHER** and **SCREW (8)**.
- Push **DIAL PLATE (9)** onto **CAP (4)** flush against **ESCUTCHEON COVER (3)** with the "OFF" facing down.
- Install **HANDLE ASSEMBLY (10)** onto **ADAPTER (6)** with **LEVER (11)** in the down position. Turn **LEVER (11)** clockwise to off position. Pull **HANDLE ASSEMBLY (10)** off and align again to down position. Thread **HANDLE BASE (12)** clockwise onto **ADAPTER (6)** to secure handle to valve.



2 ADJUST HOT LIMIT STOP

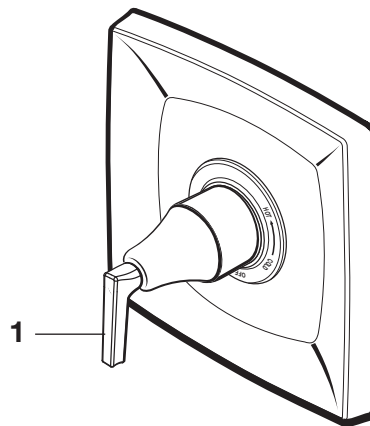
By restricting **HANDLE** rotation and limiting the amount of hot water allowed to mix with the cold, the **HOT LIMIT SAFETY STOP (1)** reduces risk of accidental scalding. To set the maximum hot water temperature of your faucet, all you need to do is adjust the setting on the **HOT LIMIT SAFETY STOP (1)**.

- Turn **CARTRIDGE STEM (2)** to the OFF position (coldest setting) before making adjustment to **HOT LIMIT STOP (1)**. Use a flat blade screwdriver to pry free the **HOT LIMIT SAFETY STOP (1)**. Pull forward and rotate counterclockwise one number to limit hot water temperature. Use **ARROW (3)** on **CARTRIDGE (4)** and **NUMBERS (5)** on **HOT LIMIT STOP (1)** for indication.



3 TEST INSTALLED FITTING

- Turn VALVE "off".
- With HANDLE (1) in "off" position, turn on water supplies and check all connections for leaks.
- Operate HANDLE and flush water lines thoroughly. Check the function for proper operation.



AMERICAN STANDARD

Replace the "YYY" with appropriate finish code

POLISHED CHROME	100
BRUSHED NICKEL	144

Keefe™ Pressure Balanced Shower Valve Trim Kit

MODEL NUMBER

D35104.500

