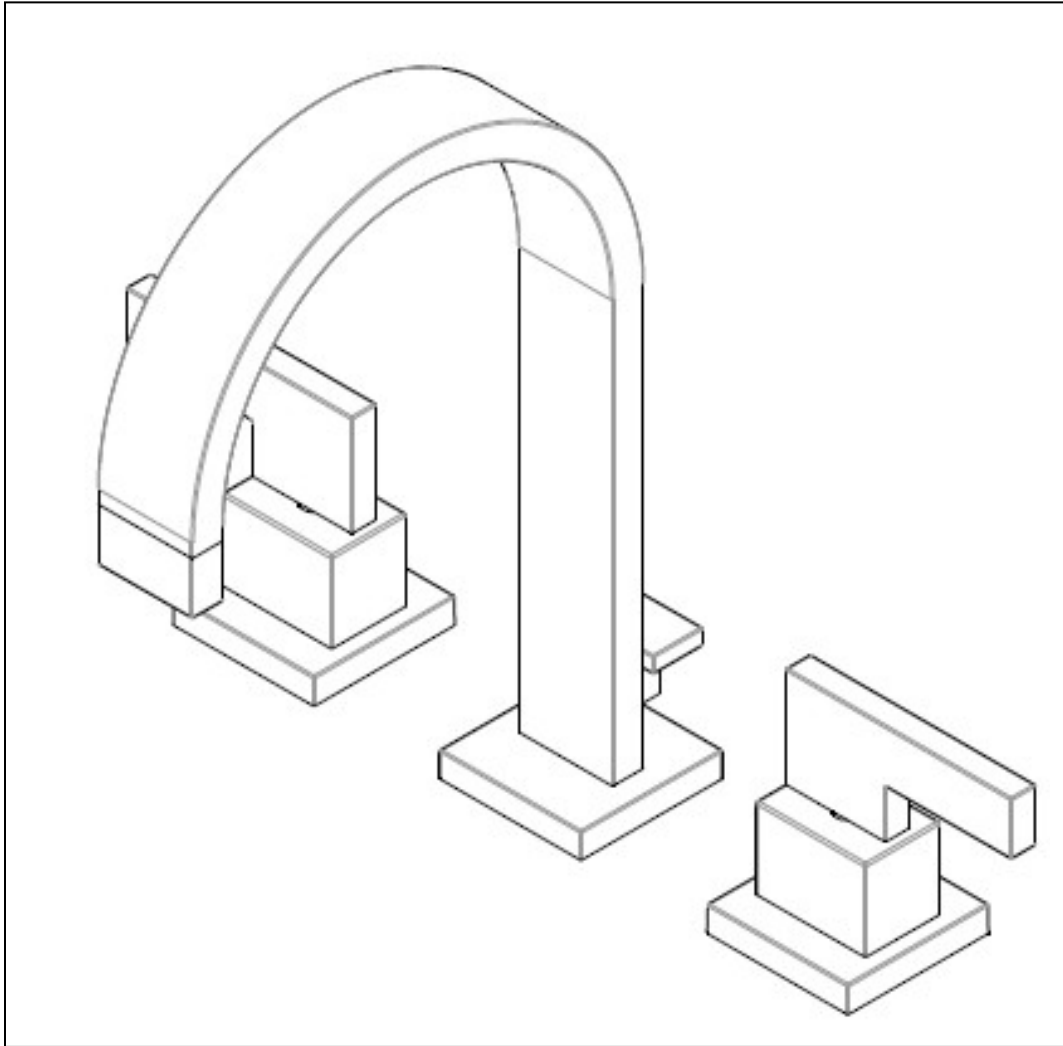


INSTALLATION INSTRUCTIONS  
WIDESPREAD LAVATORY FAUCET  
MODEL No: FE-8700

NEWPORT  
365

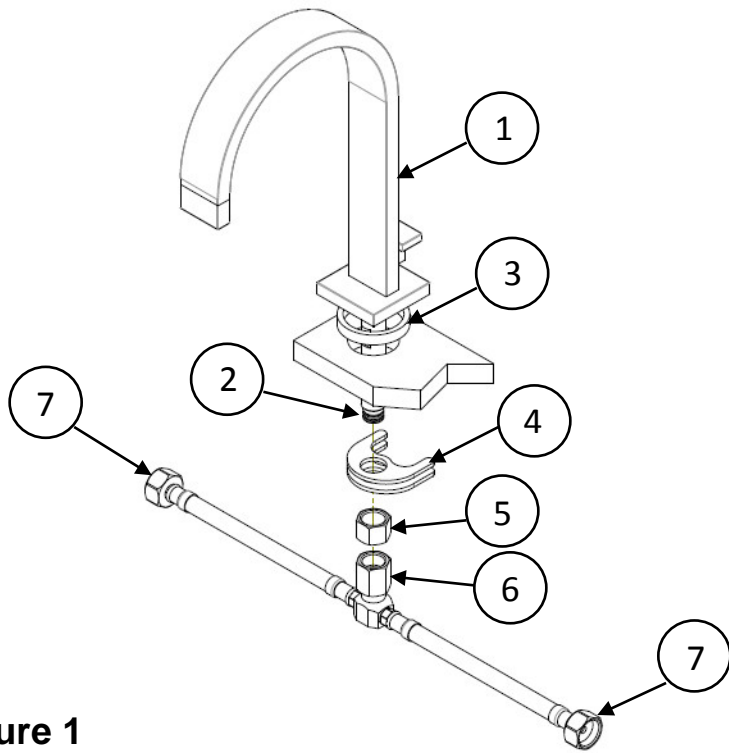


**Congratulations on the purchase of your Newport product, an excellent choice, that will give you years of quality service and enhance the look and style of your home.**

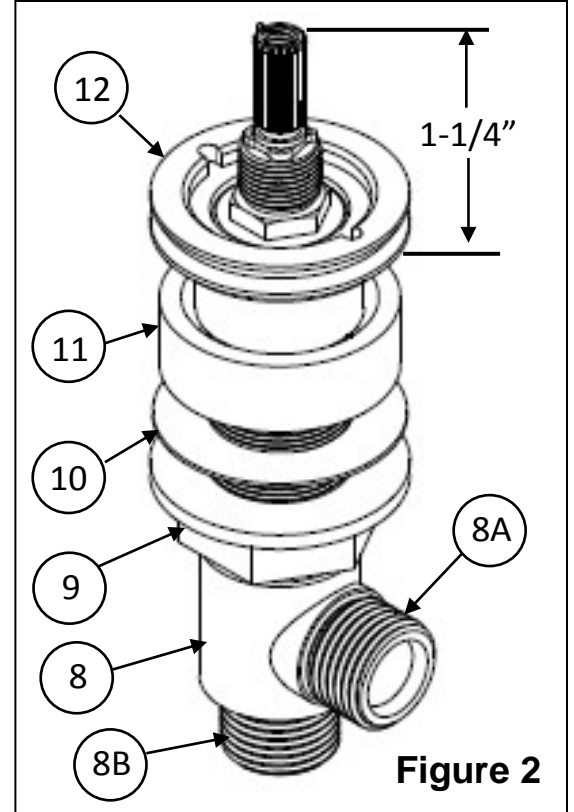
## Recommended Installation by a Professional Plumbing Contractor

Note: The use of petroleum base plumbers putty on our products will nullify the warranty. We recommend the use of clear silicone sealing materials. Recommended deck hole Ø 1-3/8”.

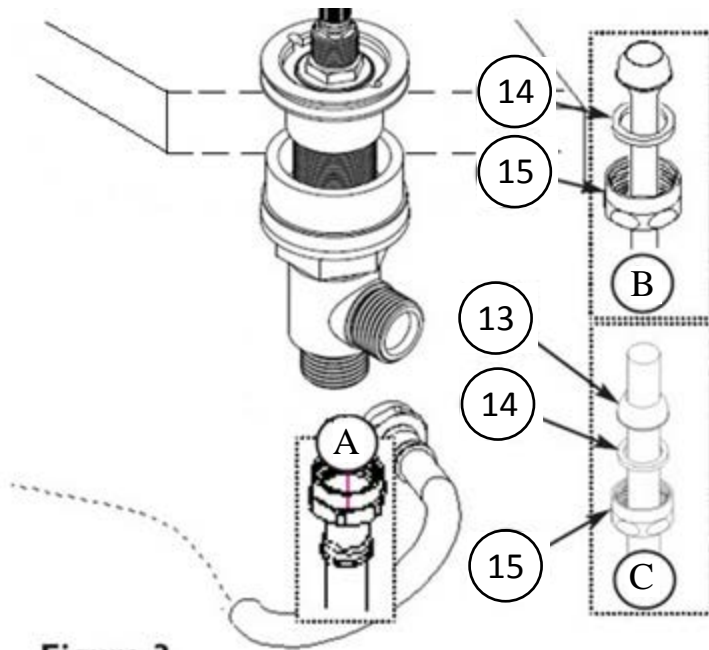
1. Insert SHANK (2) through base WASHER (3) and sink hole. From underside of sink mount the CRESENTS (4) and mounting NUT(5) onto the SHANK (2). Align the SPOUT (1) and secure into place by tightening mounting NUT (5). **See Figure 1.**
2. Place the plastic flange NUT (9), fiber WASHER (10), and SPACER (11) onto valve BODY (8). Insert valve BODY (8) through sink hole from underside of sink. Thread the MOUNTING NUT (12) onto the upper position of the valve BODY (8). Valve BODY (8) should extend 1-1/4” above mounting surface. Secure into place by tightening lower flange NUT (9) to 20 ft. lbs. **See Figure 2.**
3. Connect coupling NUT (6) to SHANK (2) and HOSE FITTING OUTLET (7) to OUTLET (8A) of each valve BODY (8). Hand tighten and secure each connection with a wrench ¼ turn. Connect water supply to INLET (8B) of valve BODIES (8) with one of the three following types of risers. **See Figure 3:**  
NOTE: SUPPLY RISERS ARE NOT INCLUDED – SOLD SEPERATELY
  - A. ½” IPS flexible supply line.
  - B. 3/8” or ½” O.D. bullnose riser, place friction WASHER (14) and coupling NUT (15) onto bullnose riser.
  - C. ½” O.D. copper riser, place coupling NUT (15), friction WASHER (14), and rubber NOSECONE (13) onto end of copper riser.
4. Use adjustable wrench to tighten connections. Do not over tighten and take care not to kink copper supply when bending. Use a tube bender and cutter to properly adjust copper supply.
5. With the valve STEM (16) in the closed position, place HANDLE (17) over valve STEM (16). Secure handle assembly into place by first engaging the valve STEM (16), then position and hold the handle LEVER (17A) while tightening the set SCREW (18). **See Figure 4.**
6. Remove drain PLUG (25) from FLANGE (19). Place FLANGE (19) through sink drain opening. Use plumbing putty to seal between the FLANGE (19) and top side of sink. From bottom side of sink, place cone shaped rubber WASHER (20) onto FLANGE (19) and slide up against sink bottom.  
Note: Cone portion of washer to face upward. Next slide on flat WASHER (21) and loosely secure with flange NUT (22). Place white WASHER (23) into drain BODY (24) and tighten to FLANGE (19). Position the side opening of drain BODY (24) towards the back side of the sink, tighten the flange NUT (22).
7. Place drain PLUG (25) in the orientation as shown in **Figure 5**, into FLANGE (19). Secure ROD (26) to drain KNOB (27) and STRAP (28), approximately 1” from end of ROD (26), with SCREW (29). Insert ball ROD (30) into the side opening of drain BODY (24), secure with ball rod NUT (31). Adjust the rise of the plunger and CLIP (32) into place. Adjust ball ROD (30) and pop-up ROD (26) so drain will open and close properly.
8. With handles in the OFF position, turn on water supplies and check all connections for leaks.
9. Operate both handles to flush water lines thoroughly.



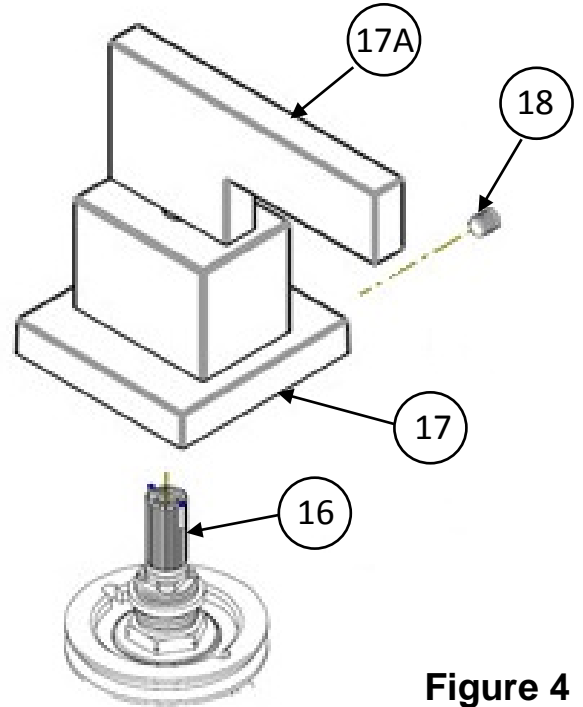
**Figure 1**



**Figure 2**



**Figure 3**



**Figure 4**

