

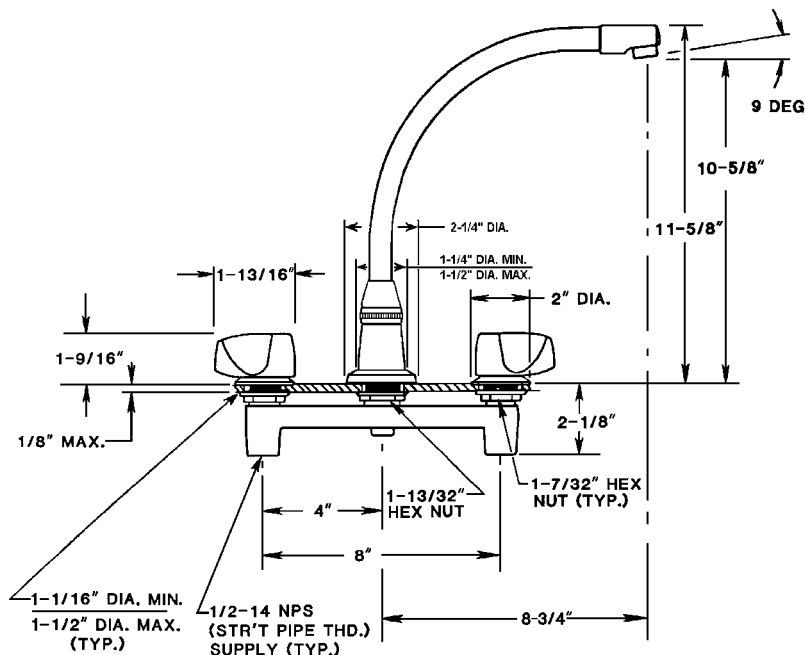


## FAUCET GROUP

# JWF-200

## CONCEALED LEDGEMOUNT

SUBMITTAL DATA



### OPTIONS HANDLES

- 4" Wrist Blades "W4"
- 6" Wrist Blades "W6"
- Canopy Type "C" (not ADA)
- Acrylic "P" (not ADA)

### AERATOR

- Duo Stream Swivel "B"
- Rose Spray "J-RS"

### VANDAL RESISTANT

- Aerator "VR-A"
- Handles "VR-H"



### TECHNICAL DATA CONSTRUCTION:

- Concealed ledgemount on 8 inch centers
- Cast brass body
- High rise swing spout with 10-5/8" clearance
- Replaceable seats
- Brass quarter turn stem units
- Chrome plated die cast teardrop handles
- Equipped with water saving aerator
- Conforms to ANSI standard 112.18.1
- Certified to NSF/ANSI 61

### FINISH

- Polished chrome plate

### FLOW RATE

- 2.2 GPM flow restricting aerator

### A.D.A. COMPLIANCE

- Yes

### VARIANTS

- JWF-200-R70° - Restricted swing high rise spout
- JWF-201 = JWF-200 w/ hose & spray

JUST MFG. COMPANY CONTINUES TO MAKE QUALITY AND FUNCTIONALITY A MARK OF THE JUST PRODUCT LINE. TO DO SO REQUIRES THAT WE RESERVE THE RIGHT TO CHANGE PRODUCT INFORMATION WITHOUT NOTICE. DIMENSIONS MAY VARY AND ARE SUBJECT TO CHANGE WITHOUT NOTICE. NO RESPONSIBILITY IS ASSUMED FOR USE OF SUPERCEDED OR VOIDED DATA. FOR THE MOST CURRENT AND ACCURATE INFORMATION REGARDING THE COMPLETE LINE OF JUST SINKS, FAUCETS AND DRAINS, CLICK ON THE **SPEC LINE DRAWINGS** LINK ON OUR WEB SITE AT [www.justmfg.com](http://www.justmfg.com)

### JUST MANUFACTURING COMPANY

9233 KING STREET . FRANKLIN PARK . ILLINOIS . 60131-2111

PH: 847-678-5150 . FAX: 847-678-6817

E-MAIL: [custserv@justmfg.com](mailto:custserv@justmfg.com) . [www.justmfg.com](http://www.justmfg.com)

Job Name \_\_\_\_\_

Customer \_\_\_\_\_

Architect/Engineer \_\_\_\_\_

APPROVED FOR MANUFACTURING

MODEL NO. \_\_\_\_\_ QTY. \_\_\_\_\_

COMPANY \_\_\_\_\_

TITLE \_\_\_\_\_ DATE \_\_\_\_\_

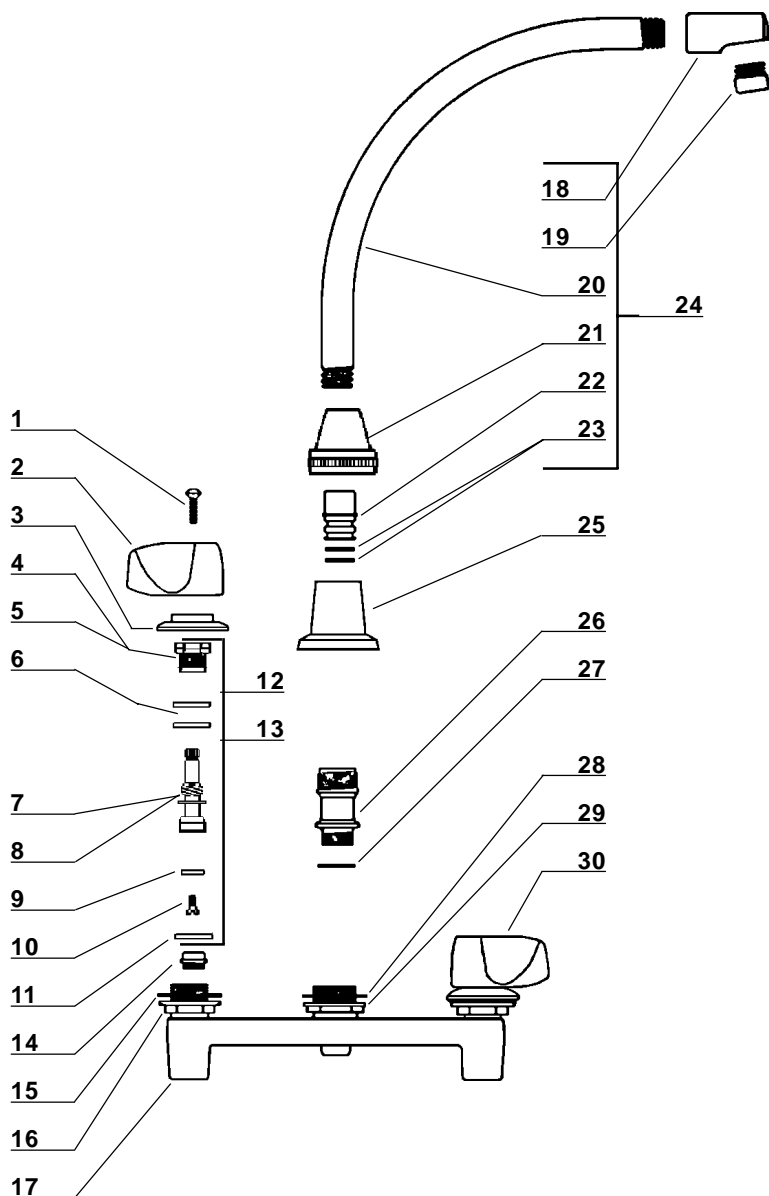
SIGNATURE \_\_\_\_\_

REVISED-5/2004



**FAUCET GROUP**

**CONCEALED LEDGEMOUNT**



Item No.	Part No.	Description
1	107-H	Handle Screw
2	519-L	Teardrop Handle
3	PF-524-J	Escutcheon
4	454-EWC	Bonnet ( Cold Side)
5	454-EWH	Bonnet ( Hot Side)
6	1038-453	O-Ring
7	454-FL	Stem ( Left Side )
8	454-FR	Stem ( Right Side )
9	901-WN	Seat Washer
10	104	Seat Washer Screw
11	1028-Y	Gasket
12	SU-454-EL	Stem & Bonnet Assembly (Left)
13	SU-454-ER	Stem & Bonnet Assembly (Right)
14	263-C	Replaceable Seat
15	491-U	Corner Gasket
16	53-AS	Locknut
17	1959-J	Body
18	PF-1550-J	Adapter
19	30-L	Aerator
20	PF-357-JHR	Waterfall Spout
21	PF-782-JES	Spout Nut
22	PF-741-DO	Adaptor
23	1038-K	"O" Rings
24	SU-357-WSA	Waterfall Spout Assembly
25	1012N	Escutcheon
26	2985-J	Centerpiece
27	402-J	Washer
28	491-S	Gasket
29	53-BS	Locknut
30	519-R	Teardrop Handle

JUST MFG. COMPANY CONTINUES TO MAKE QUALITY AND FUNCTIONALITY A MARK OF THE JUST PRODUCT LINE. TO DO SO REQUIRES THAT WE RESERVE THE RIGHT TO CHANGE PRODUCT INFORMATION WITHOUT NOTICE. DIMENSIONS MAY VARY AND ARE SUBJET TO CHANGE WITHOUT NOTICE. NO RESPONSIBILITY IS ASSUMED FOR USE OF SUPERCEDED OR VOIDED DATA. FOR THE MOST CURRENT AND ACCURATE INFORMATION REGARDING THE COMPLETE LINE OF JUST SINKS, FAUCETS AND DRAINS, CLICK ON THE **SPEC LINE DRAWINGS** LINK ON OUR WEB SITE AT [www.justmfg.com](http://www.justmfg.com)

**JUST MANUFACTURING COMPANY**

9233 KING STREET . FRANKLIN PARK, ILLINOIS . 60131-2111

PH: 847-678-5150 . FAX: 847-678-6817

E-MAIL: [custserv@justmfg.com](mailto:custserv@justmfg.com) . [www.justmfg.com](http://www.justmfg.com)