

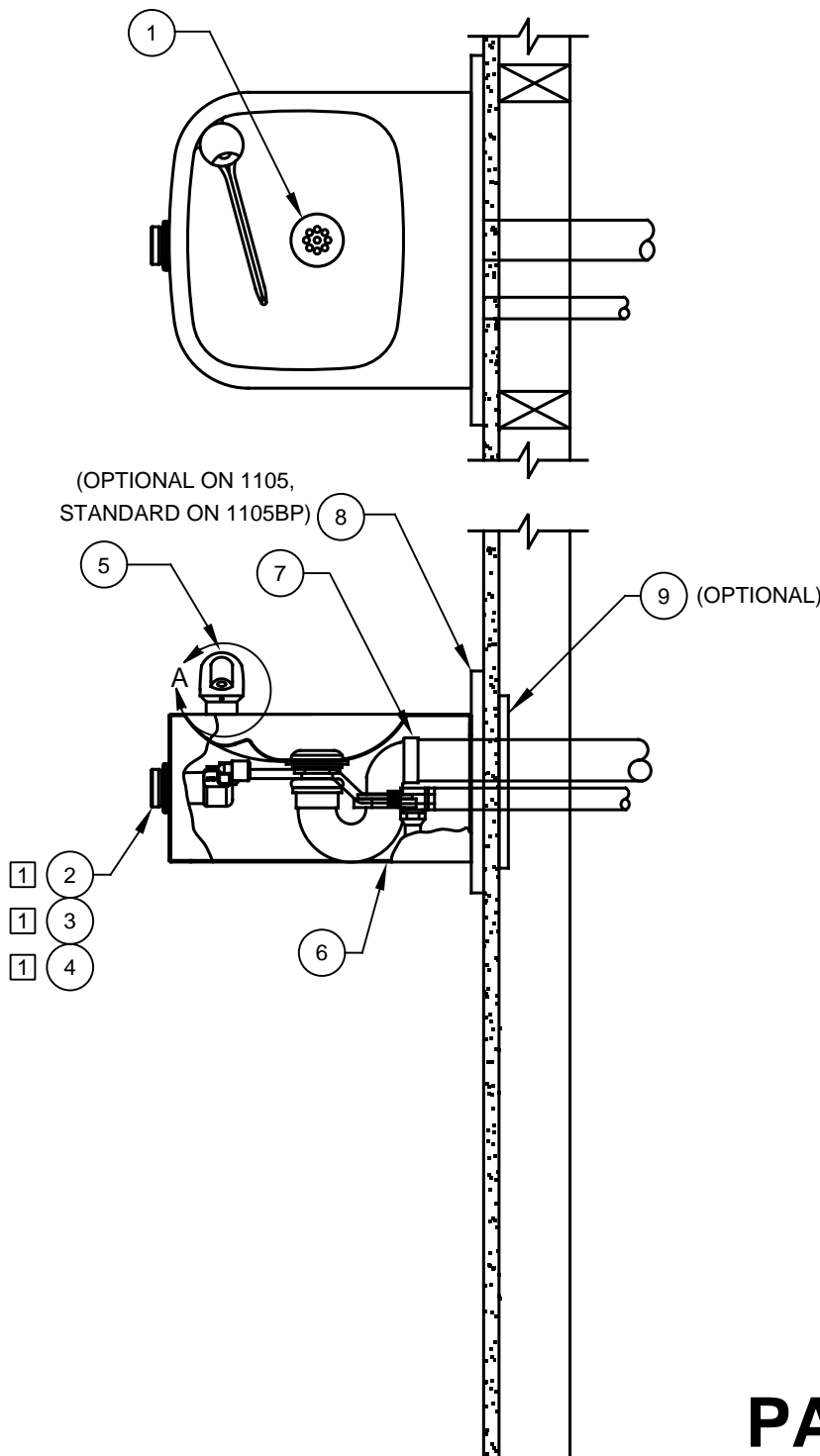
NOTES:

- 1 5874PBF (ITEM 2) INCLUDES VRK5874 CARTRIDGE ASSEMBLY (ITEM 3) AND PBA6 FLANGED PUSH BUTTON (ITEM 4).
- 2 ENSURE TUBE IS DISCONNECTED FROM PUSH BUTTON VALVE BODY PRIOR TO REMOVAL. APPLY ONE DROP OF LOCTITE 222MS TO NOZZLE THREADS PRIOR TO FASTENING BACK ONTO BUBBLER HEAD. RE-ATTACH TUBE TO VALVE. *

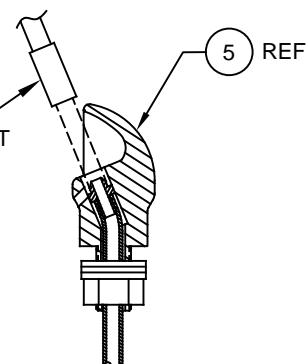
ITEM	DESCRIPTION	1105	1105BP
1	STRAINER, WASTE ASSY	6462	6462
2	BUTTON, PUSH, FLANGED, PCP W/ VALVE	5874PBF	5874PBF
3	VALVE REPAIR KIT	VRK5874	VRK5874
4	PUSH BUTTON ASSY	PBA6	PBA6
5	BUBBLER HEAD ASSY, PCP	5703M	5703M
6	PLATE, BOTTOM	PBM1105	PBM1105
7	TRAP	0005982900	0005982900
8	BACK PANEL	BP3 **	BP3
9	PLATE, MOUNTING	6700	6700

* DENOTES OPTIONAL PART.

** DENOTES OPTIONAL PART FOR ONE MODEL ONLY.



- 2 REMOVE INSERT WITH 5/16 HEX SOCKET (NOT SUPPLIED)



DETAIL A
ROTATED 90° INTO VIEW

PARTS BREAKDOWN



Haws®

1455 KLEPPE LANE
SPARKS, NEVADA 89431
(775) 359-4712 FAX (775) 359-7424
E-MAIL: HAWS@HAWS.CO.COM
WEBSITE: WWW.HAWS.CO.COM

ECN NO.	REVISED PER	BY
DRAWN	DATE	CHKD
APPROVED	DATE	WVC
FV	07/06/17	

MODEL(S)

1105/1105BP

PART NUMBER
0002076524
REVISION
17

WHEN ORDERING PARTS PLEASE SPECIFY MODEL NUMBER.

SCALE: NA DRAWING TYPE: PARTS BREAKDOWN

SIZE: A SHEET 1 OF 1