



## UNDERMOUNT GROUP

### SPECIFICATION

Seamless die-drawn construction of type 304, 18-8 stainless steel. Interior and top surfaces polished to a non-porous Hand-Blended Just Finish with highlighted bowl rim. Fully coated underside insulates for sound, and absorbs condensation. Conforms to ASME/ANSI A112.19.3M. Furnished with undermount clips less fasteners. Drain punch #35 centered for Just J-35 unless otherwise specified.

MODEL NO.	A	B	C	D	E
USX-1616-A	16	16	14	14	10-1/2
USX-1618-A	16	18	14	16	10-1/2
USX-1620-A	16	20	14	18	10-1/2
USX-1818-A	18	18	16	16	10-1/2
USX-1821-A	18	21	16	19	10-1/2
USX-1824-A	18	24	16	22	10-1/2
USX-1830-A	18	30	16	28	10-1/2
USXD-1618-A	16	18	14	16	12
USXD-1818-A	18	18	16	16	12
USXD-1821-A	18	21	16	19	12
USXD-1824-A	18	24	16	22	12
USXD-1830-A	18	30	16	28	12

Job Name \_\_\_\_\_

Customer \_\_\_\_\_

Architect/Engineer \_\_\_\_\_

APPROVED FOR MANUFACTURING

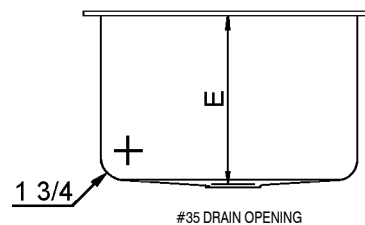
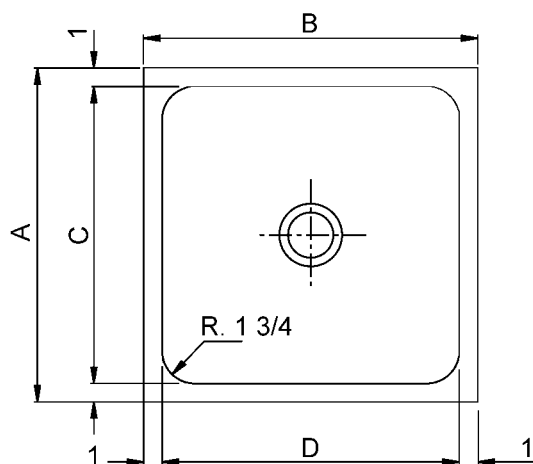
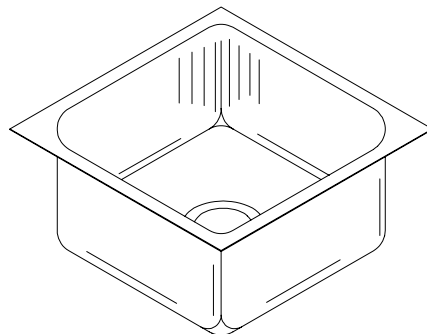
MODEL NO. \_\_\_\_\_ QTY. \_\_\_\_\_

COMPANY \_\_\_\_\_

TITLE \_\_\_\_\_ DATE \_\_\_\_\_

SIGNATURE \_\_\_\_\_

## USX / USXD SERIES - A - 18 GA.



SUBMITTAL DATA

FUNCTIONAL DESIGN, QUALITY, AND SPECIFICATIONS LISTED DESCRIBE THE JUST STANDARD OF QUALITY. WHEN MAKING COMPARISONS WITH OTHER OFFERINGS, INSIST ON THE JUST QUALITY OF CONSTRUCTION. FOR ADDITIONAL INFORMATION REGARDING THE COMPLETE LINE OF JUST SINKS, FAUCETS AND DRAINS, VISIT OUR WEB SITE AT [www.justmfg.com](http://www.justmfg.com)

### JUST MANUFACTURING COMPANY

9233 KING STREET . FRANKLIN PARK . ILLINOIS . 60131-2111

PH: 847-678-5150 . FAX: 847-678-6817

E-MAIL: [custserv@justmfg.com](mailto:custserv@justmfg.com) . [www.justmfg.com](http://www.justmfg.com)