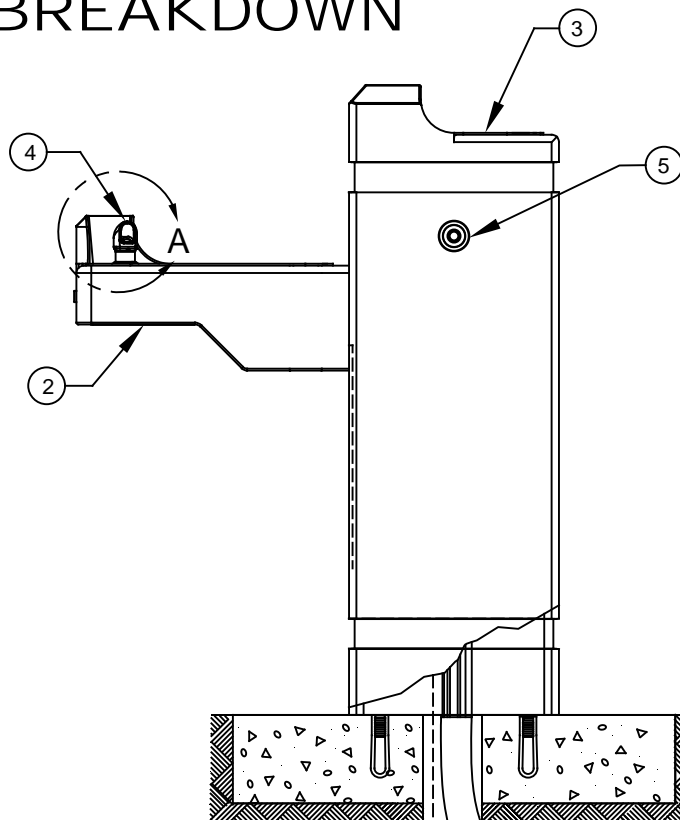


PARTS BREAKDOWN

ITEM	DESCRIPTION	PART NO.
1	VALVE, DUAL, FREEZE RESISTANT	6518.2FR
2	BOTTOM PLATE	PBM1047
3	STRAINER ASSY	6466
4	BUBBLER HEAD	5703M
5	PUSH BTN ASS'Y	5881PBA

** REQUIRED - SOLD SEPARATELY




1
REMOVE INSERT
WITH 5/16 HEX SOCKET
(NOT SUPPLIED)

VALVE BOX
(NOT SUPPLIED)

DETAIL A
ROTATED 90° INTO VIEW
DETAIL OF ITEM 3

NOTE:

- 1 ENSURE TUBE IS DISCONNECTED FROM "PUSH-IN" TYPE CONNECTOR ON PRESSURE REGULATOR PRIOR TO REMOVAL. APPLY A DROP OF LOCTITE 222MS ON NOZZLE THREADS PRIOR TO REASSEMBLING BACK ONTO BUBBLER HEAD. REATTACH TUBE TO "PUSH-IN" TYPE CONNECTOR ENSURING IT IS FULLY BOTTOMED OUT.

 Haws®		1455 KLEPPE LANE SPARKS, NEVADA 89431 (775) 359-4712 FAX (775) 359-7424 E-MAIL: HAWS@HAWS.CO.COM WEBSITE: WWW.HAWS.CO.COM	
		ECN NO. REVISED PER BY ECN: 5527 FV	MODEL(S) 3150FR
DRAWN D. OLLOM	DATE 11/25/95	CHKD DP	REVISION 21
APPROVED FV	DATE 04/02/20	SCALE: 1:6 DRAWING TYPE: PARTS BREAKDOWN	SIZE: A SHEET 1 OF 1

WHEN ORDERING PARTS PLEASE SPECIFY MODEL NUMBER.