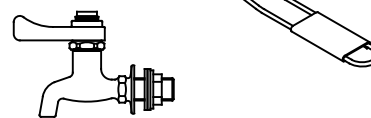


PARTS BREAKDOWN

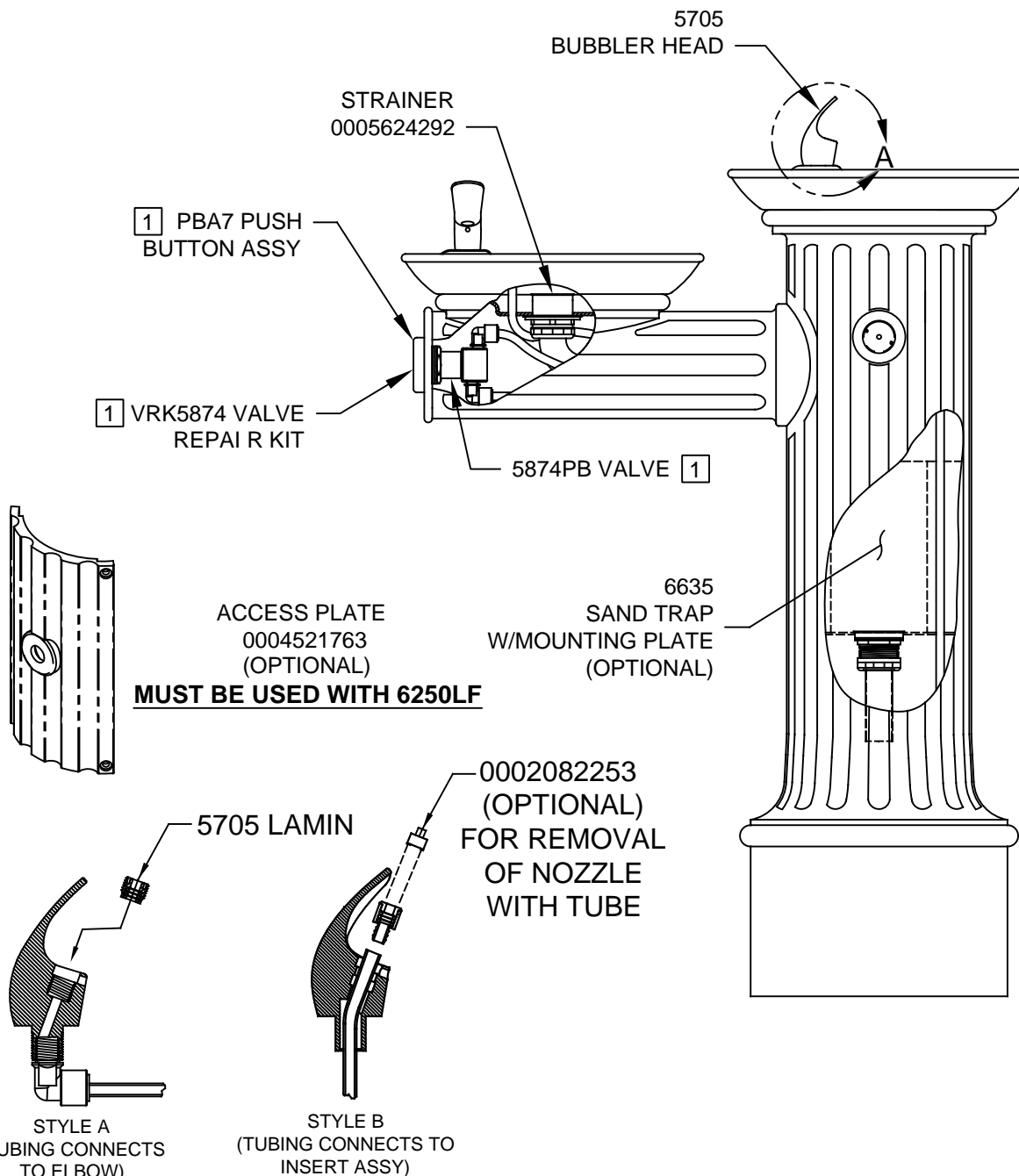
NOTES:

- 1 5874PB INCLUDES VRK5874 CARTRIDGE ASSEMBLY AND PBA7 RECESSED PUSH BUTTON.
- 2 ENSURE TUBE IS DISCONNECTED FROM PUSH BUTTON VALVE BODY PRIOR TO REMOVAL. APPLY ONE DROP OF LOCTITE 222MS TO NOZZLE THREADS PRIOR TO FASTENING BACK ONTO BUBBLER HEAD. RE-ATTACH TUBE TO VALVE.
3. IMPORTANT: IF HOSE BIB IS USED IT MUST BE USED WITH SAND TRAP 6611. CANNOT OFFER HOSE BIBS AS OPTION WITH SAND TRAP 6635. IF HOSE BIB IS PURCHASED, ACCESS PLATE, 0004521783, MUST BE USED.

SPANNER WRENCH
0006983506



**MODEL 6250LF BIB FAUCET
(OPTIONAL)**



**FOUNTAIN COULD HAVE EITHER STYLE
DETAIL A
ROTATED 90° INTO VIEW**

WHEN ORDERING PARTS PLEASE SPECIFY MODEL NUMBER.

				1455 KLEPPE LANE SPARKS, NEVADA 89431 (775) 359-4712 FAX (775) 359-7424 E-MAIL: HAWS@HAWS.CO.COM WEBSITE: WWW.HAWS.CO.COM			
ECN NO.	REVISED PER	BY	MODEL(S)	PART NUMBER			
	ECN: 5189	JP		0002074001			
DRAWN	DATE	CHKD		REVISION			
P.M.	05-03-00	VWC		16			
APPROVED	DATE			SCALE: 1:4 DRAWING TYPE: PARTS BREAKDOWN SIZE: A SHEET 1 OF 1			
FV	07/07/17						