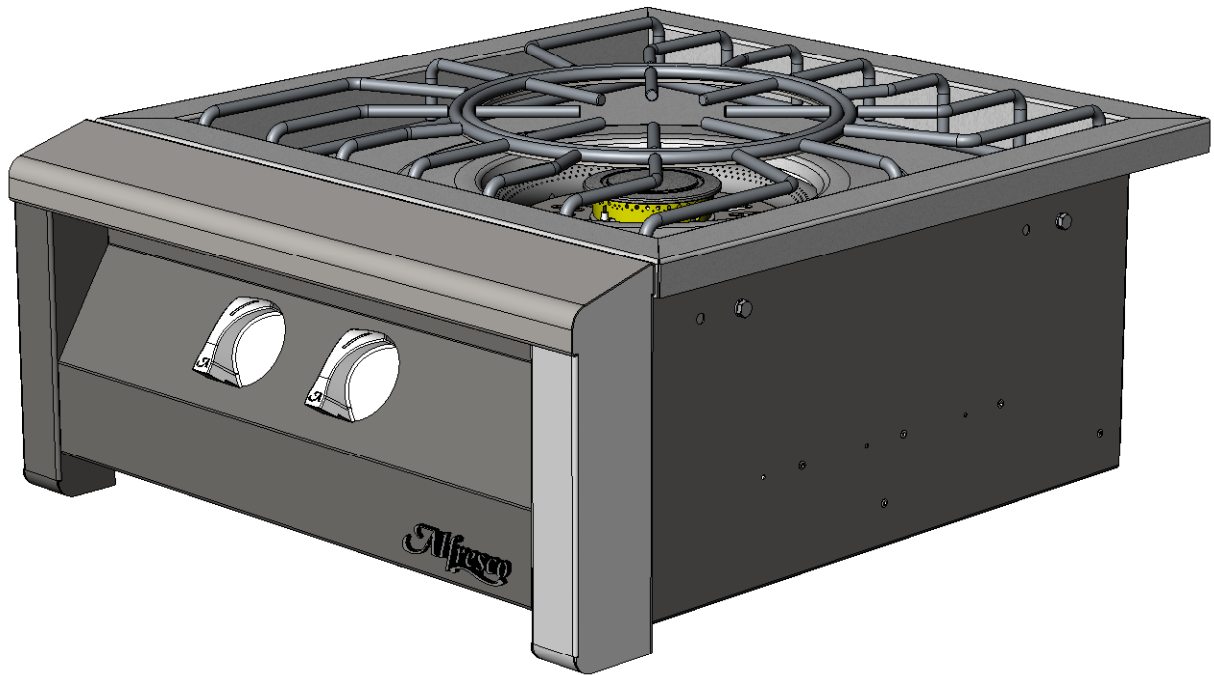



Alfresco™

Open Air Culinary Systems



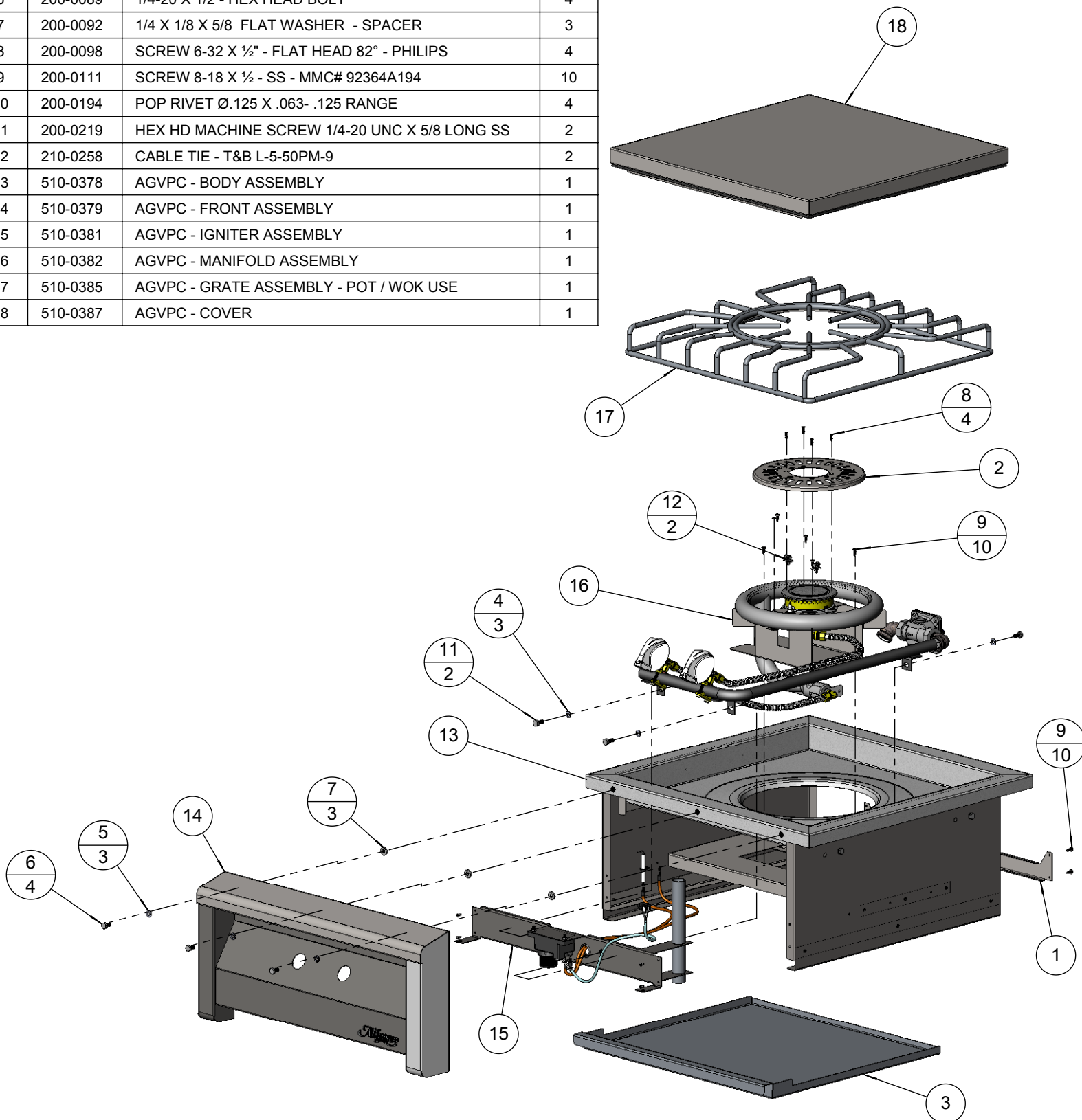
AGVPC

VERSAPOWER™ COOKING SYSTEM

| | | | |
|---|--|--|--------------------------------------|
|  SUPERIOR EQUIPMENT SOLUTIONS 7039 EAST SLAUSON AVENUE COMMERCE, CA. 90040 | THE INFORMATION CONTAINED IN THIS DRAWING IS THE SOLE PROPERTY OF SUPERIOR EQUIPMENT SOLUTIONS INC. ANY REPRODUCTION IN PART OR AS A WHOLE WITHOUT WRITTEN PERMISSION FROM SUPERIOR EQUIPMENT SOLUTIONS, INC. IS PROHIBITED. | PROJECT TITLE: AGVPC | DRAWING NO.: 500-0063A |
| | DRAWN BY: ADRIAN CRISCI CREATED: 7/3/2008 8:34:07 AM | DRAWING TITLE: AGVPC - VERSA-POWER™ COOKER | |
| | | | |

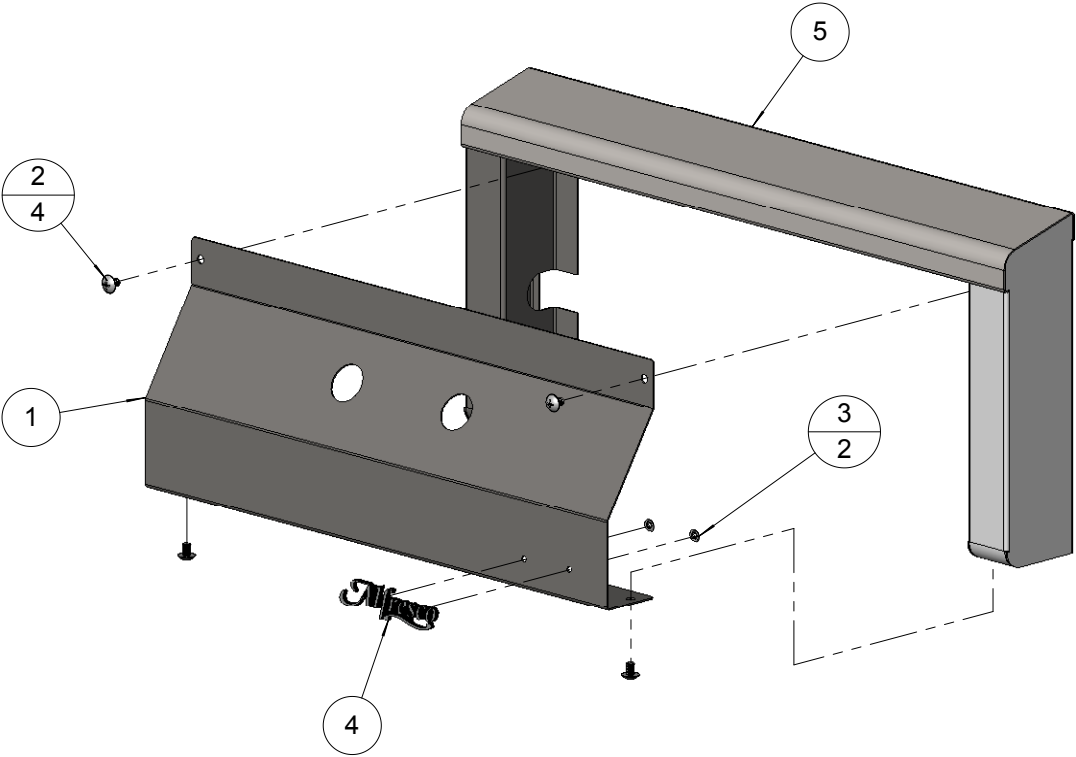
BILL OF MATERIAL

| NO. | PART NUMBER | DESCRIPTION | QTY |
|-----|-------------|---|-----|
| 1 | 100-1475 | AGVPC BACK BODY BRACKET | 1 |
| 2 | 100-1478 | AGVPC TOP DECK BURNER CAP | 1 |
| 3 | 100-1482 | AGVPC GREASE TRAY | 1 |
| 4 | 200-0087 | WASHER - 1/4" SPRING LOCK- REGULAR - SS | 3 |
| 5 | 200-0087 | 1/4" LOCK WASHER | 3 |
| 6 | 200-0089 | 1/4-20 X 1/2 - HEX HEAD BOLT | 4 |
| 7 | 200-0092 | 1/4 X 1/8 X 5/8 FLAT WASHER - SPACER | 3 |
| 8 | 200-0098 | SCREW 6-32 X 1/2" - FLAT HEAD 82° - PHILIPS | 4 |
| 9 | 200-0111 | SCREW 8-18 X 1/2 - SS - MMC# 92364A194 | 10 |
| 10 | 200-0194 | POP RIVET Ø.125 X .063- .125 RANGE | 4 |
| 11 | 200-0219 | HEX HD MACHINE SCREW 1/4-20 UNC X 5/8 LONG SS | 2 |
| 12 | 210-0258 | CABLE TIE - T&B L-5-50PM-9 | 2 |
| 13 | 510-0378 | AGVPC - BODY ASSEMBLY | 1 |
| 14 | 510-0379 | AGVPC - FRONT ASSEMBLY | 1 |
| 15 | 510-0381 | AGVPC - IGNITER ASSEMBLY | 1 |
| 16 | 510-0382 | AGVPC - MANIFOLD ASSEMBLY | 1 |
| 17 | 510-0385 | AGVPC - GRATE ASSEMBLY - POT / WOK USE | 1 |
| 18 | 510-0387 | AGVPC - COVER | 1 |



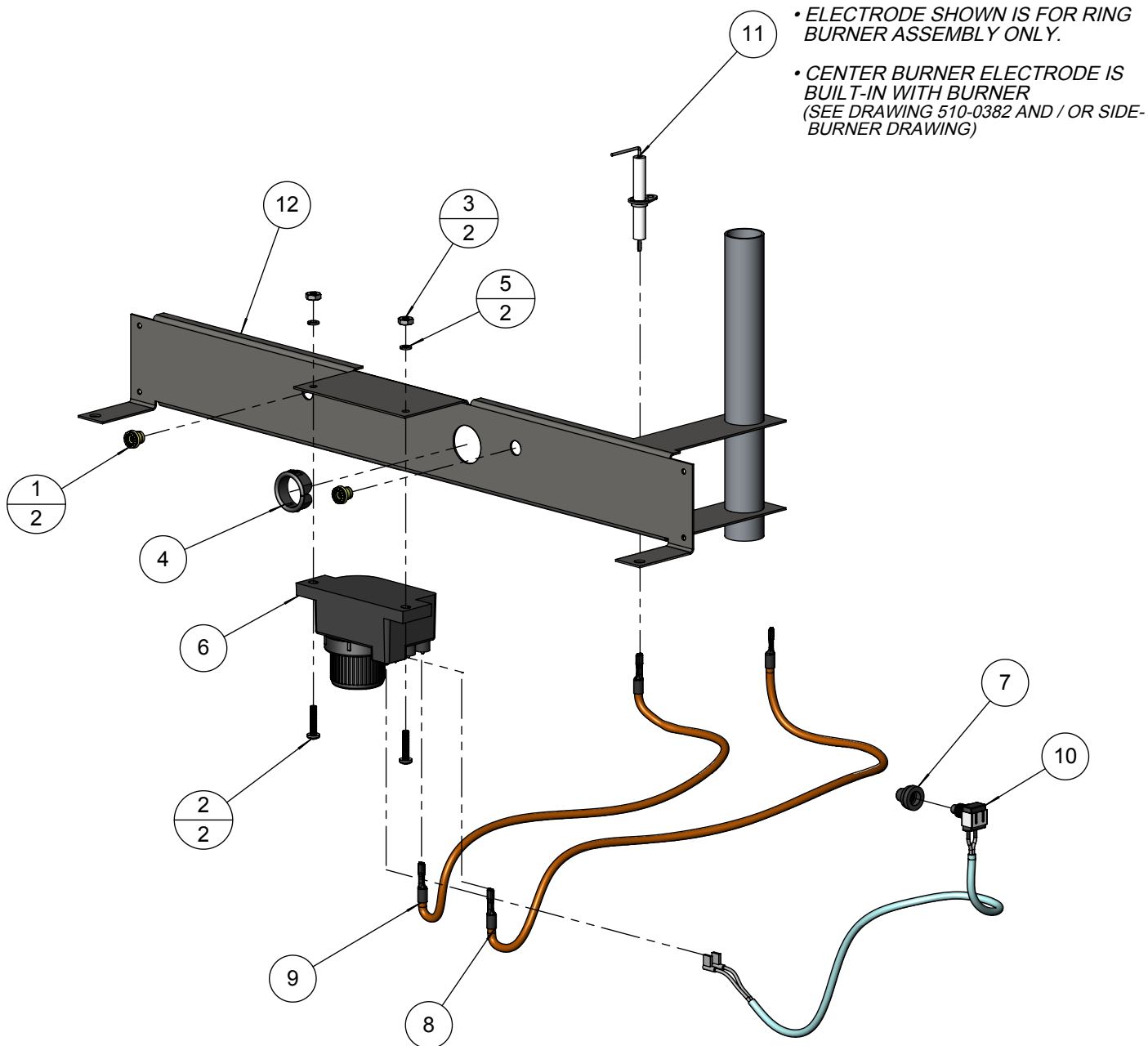
BILL OF MATERIAL

| NO. | PART NUMBER | DESCRIPTION | QTY. |
|-----|-------------|---|------|
| 1 | 100-1472 | AGVPC FRONT PANEL | 1 |
| 2 | 200-0086 | 1/4-20 X 3/8 - TRUSS HEAD - PHILIPS SCREW | 4 |
| 3 | 200-0093 | WASHER - PUSH LOCK 1/8" ID X 3/8" OD (FOR LOGO) | 2 |
| 4 | 290-0031 | LOGO - ALFRESCO | 1 |
| 5 | 510-0380 | AGVPC - FRONT ASSEMBLY- WELDED PARTS | 1 |



BILL OF MATERIAL

| NO. | PART NUMBER | DESCRIPTION | QTY. |
|-----|-------------|--|------|
| 1 | 200-0071 | RIVNUT 1/4-20 OPEN END | 2 |
| 2 | 200-0079 | 8-32 X 3/4 - PAN HEAD - PHILIPS SCREW | 2 |
| 3 | 200-0080 | 8-32 - DOUBLE CHAMFER - HEX NUT | 2 |
| 4 | 200-0081 | BUSHING HEYCO OCB-1000 - PART # 2878 | 1 |
| 5 | 200-0200 | WASHER - # 8 - LOCK SPRING - SS | 2 |
| 6 | 210-0195 | IGNITER MODULE - 2 POINTS (WITH CAP) | 1 |
| 7 | 210-0198 | SWITCH - WEATHER BOOT & CAP | 1 |
| 8 | 210-0216 | AGVPC IGNITION WIRE (TO THE CENTER BURNER) | 1 |
| 9 | 210-0216 | AGVPC IGNITION WIRE (TO THE RING BURNER) | 1 |
| 10 | 210-0340 | AGVPC IGNITION SWITCH - OFF [ON] MOMENTARY | 1 |
| 11 | 210-0498 | ELECTRODE "L" SHAPED - AGVPC RING BURNER | 1 |
| 12 | 510-0398 | AGVPC - IGNITER ASSEMBLY ► WELDED PARTS | 1 |



NOTE: ITEM 12 (ASSEMBLY 510-0398) IS SHOWN FOR ILLUSTRATION AND GENERAL ASSEMBLY PURPOSES ONLY. THIS ASSEMBLY IS ACTUALLY PART OF THE MAIN BODY ASSEMBLY 510-0378 SHOWN ON DRAWING 500-0063B

| NO. | PART NUMBER | DESCRIPTION | QTY. |
|-----|-------------|---|------|
| 1 | 100-0941 | AGVPC - BURNER GAS LINE - 3/8" X 24" -SS | 2 |
| 2 | 100-1067 | SMOKER & SZ™ ORIFICE BRACKET | 1 |
| 3 | 200-0274 | ELBOW 90°- CAST IRON - 1/2" FPT x 1/2" MPT | 2 |
| 4 | 220-0280 | REGULATOR GAS - MAXITROL RV48CL440002 | 1 |
| 5 | 220-0293 | ELBOW 1/4" FPT x 3/8" COMP | 1 |
| 6 | 220-0298 | MANIFOLD - SIDE BURNER - DUAL VALVE | 1 |
| 7 | 290-0030 | KNOB BBQ - ALFRESCO "A" LETTER | 2 |
| 8 | 290-0042 | GAS VALVE - SIDE BURNER - WITH INTERNAL ORIFICE | 2 |
| 9 | 510-0383 | AGVPC - PERIMETER BURNER ASSEMBLY | 1 |
| 10 | SEE NOTE | AGVPC - CENTER BURNER ASSEMBLY | 1 |
| 11 | SEE NOTE | AGVPC PERIMETER BURNER NOZZLE ORIFICE | 1 |

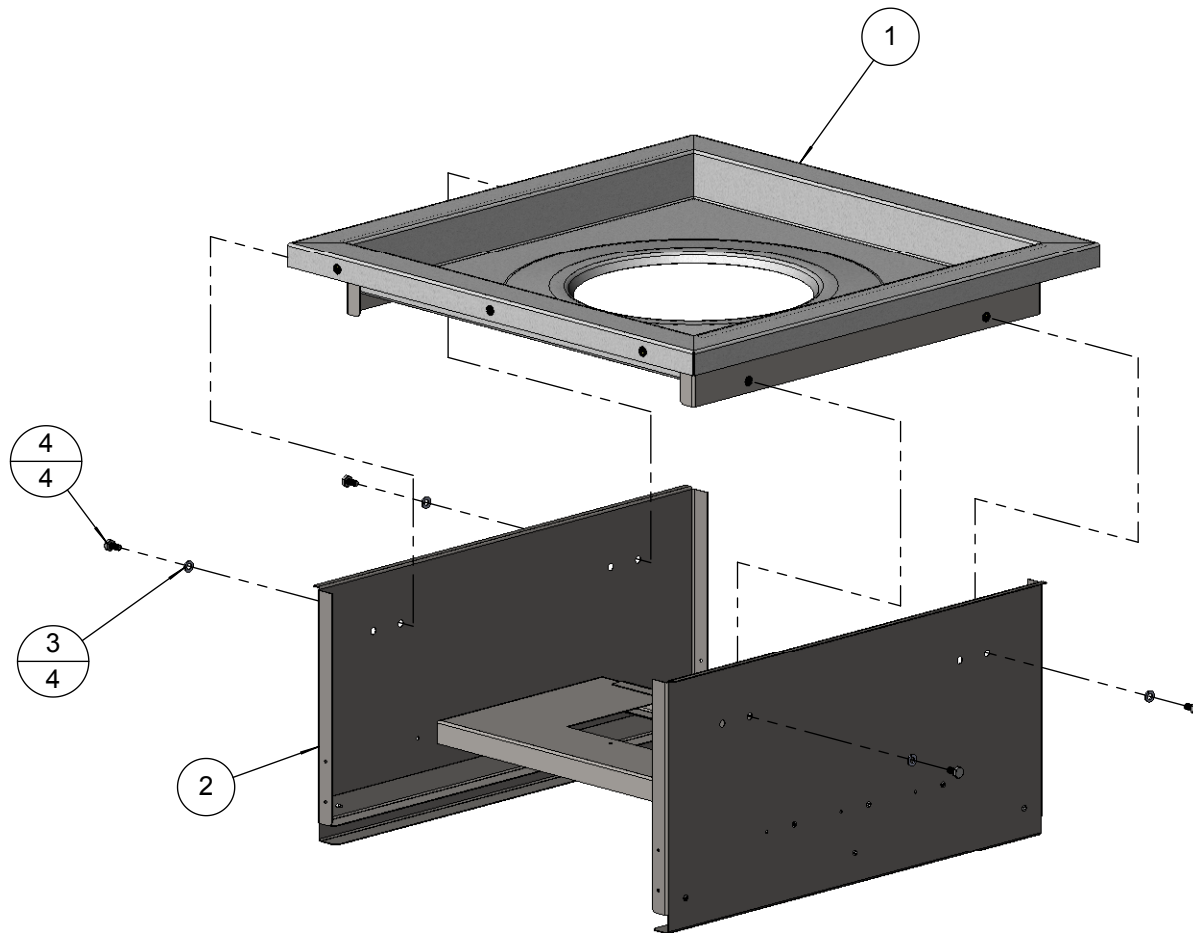
| ITEM N° | NG | LP |
|---------|----------|----------|
| | PART N° | PART N° |
| 10 | 290-0070 | 290-0071 |
| 11 | 220-0370 | 220-0290 |



SHEET 1 OF 1

BILL OF MATERIAL

| NO. | PART NUMBER | DESCRIPTION | QTY. |
|-----|-------------|---|------|
| 1 | 510-0448 | AGVPC - TOP BODY SUBASSEMBLY | 1 |
| 2 | 510-0449 | AGVPC - BOTTOM BODY SUBASSEMBLY | 1 |
| 3 | 200-0087 | WASHER - 1/4" SPRING LOCK- REGULAR - SS | 4 |
| 4 | 200-0089 | 1/4-20 X 1/2 - HEX HEAD BOLT | 4 |



NOTE: AGVPC UNITS BUILT AFTER 07/2009 HAVE BODIES BUILT WITH TWO ASSEMBLIES, TOP (510-0448), ITEM 1 AND BOTTOM (510-0449), ITEM 2, MAKING THE TOP OR BOTTOM ASSEMBLIES REPLACEABLE BY THEMSELVES.

FOR REPLACEMENT, VERIFY IF THE AGVPC UNIT'S BODY HAS SIDE MOUNTED BOLTS (ITEM 4) TO ORDER TOP OR BOTTOM ASSEMBLIES AS NEEDED.
IF THE UNIT ***DOES NOT*** HAVE SIDE BOLTS, THEN THE ENTIRE ASSEMBLY 510-0378 MUST BE ORDERED FOR PROPER REPLACEMENT.

NOTE:

SIDE BURNER ASSEMBLIES ARE USED IN AGBQ AND ALX2 BARBEQUES, AGVPC UNIT (VERSAPOWER™) COOKING SYSTEMS AS WELL AS INDIVIDUAL UNITS (AGSB-2) BUT CAN ALSO BE ORDERED AS A WHOLE UNIT (KIT) FOR NATURAL GAS (NG) OR LIQUID PROPANE (LP).

COMPLETE KITS NUMBERS:

NATURAL GAS (NG) = 290-0070

LIQUID PROPANE (LP) = 290-0071

CAPS, ORIFICES AND ELECTRODES CAN BE INDIVIDUALLY REPLACED IF REQUIRED - SEE NUMBERS BELOW.

