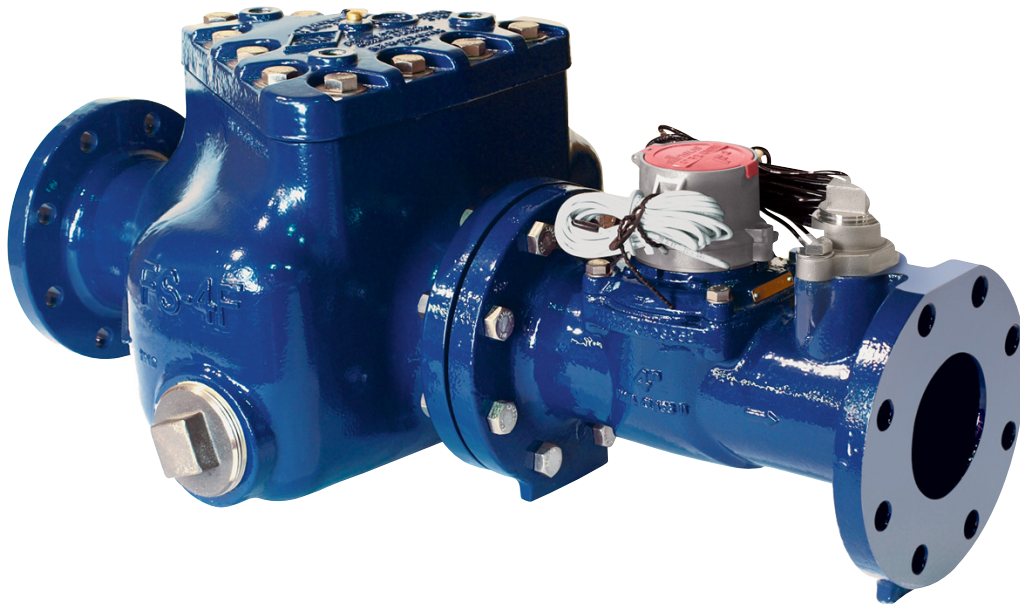
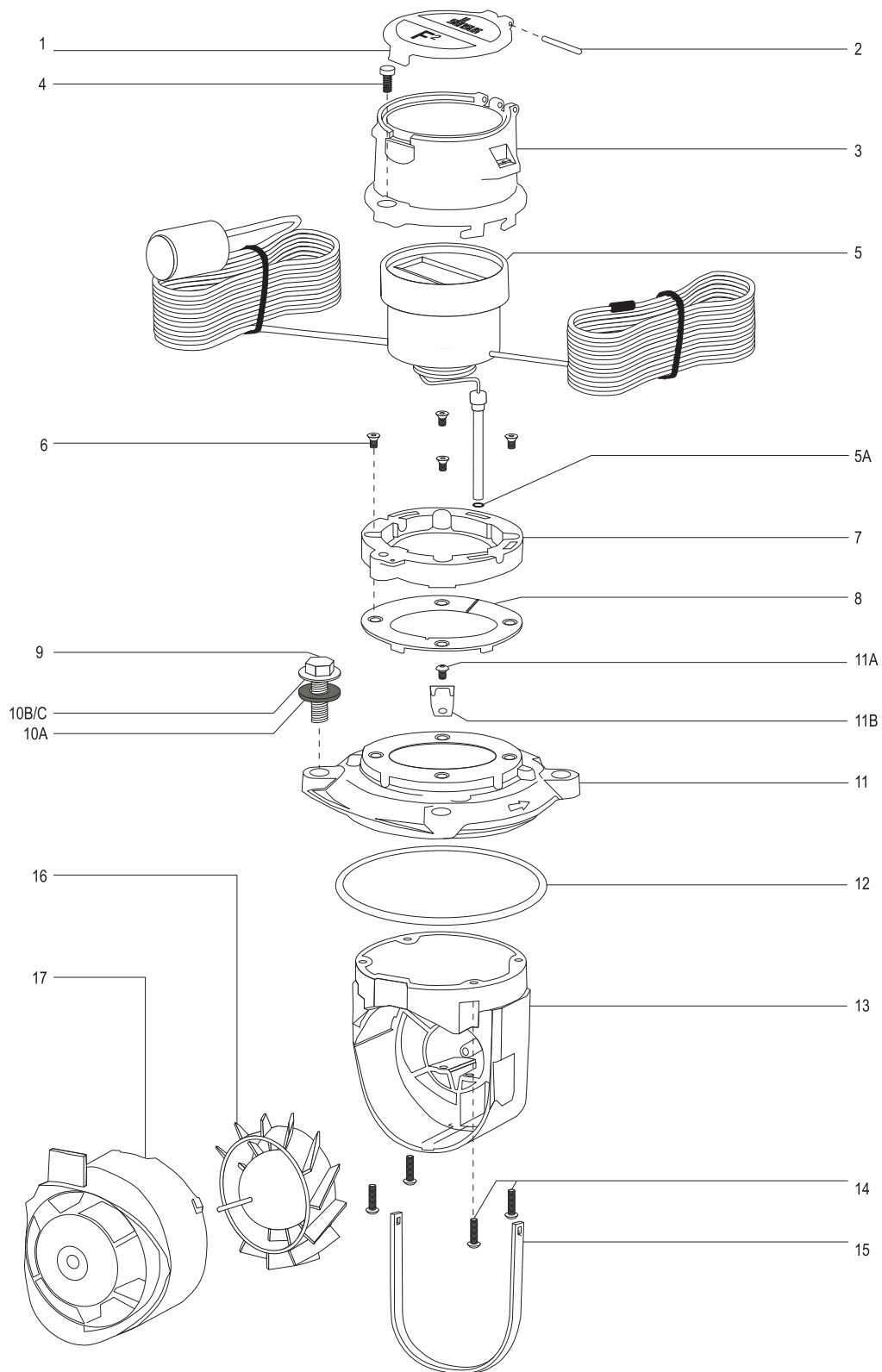
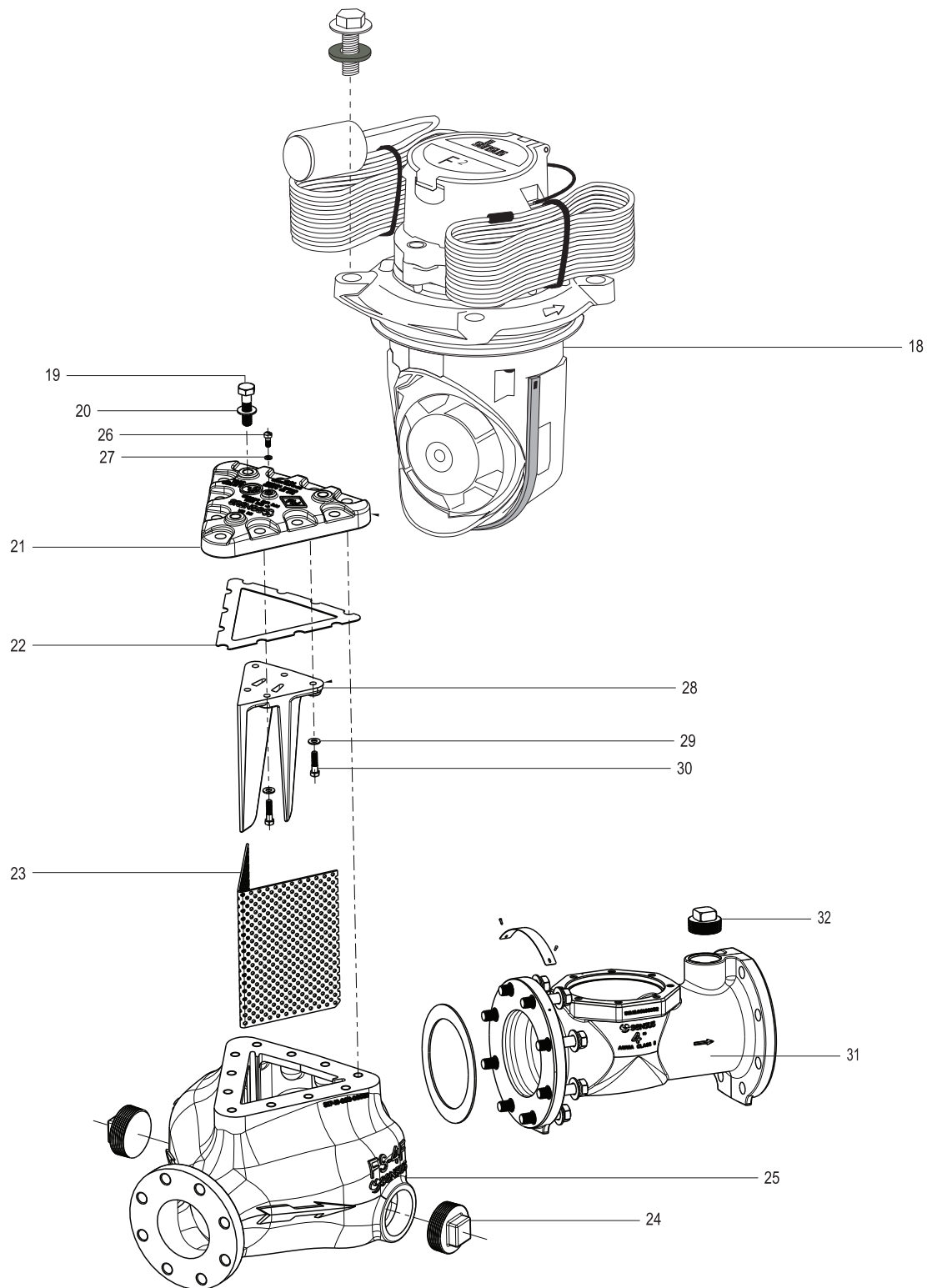
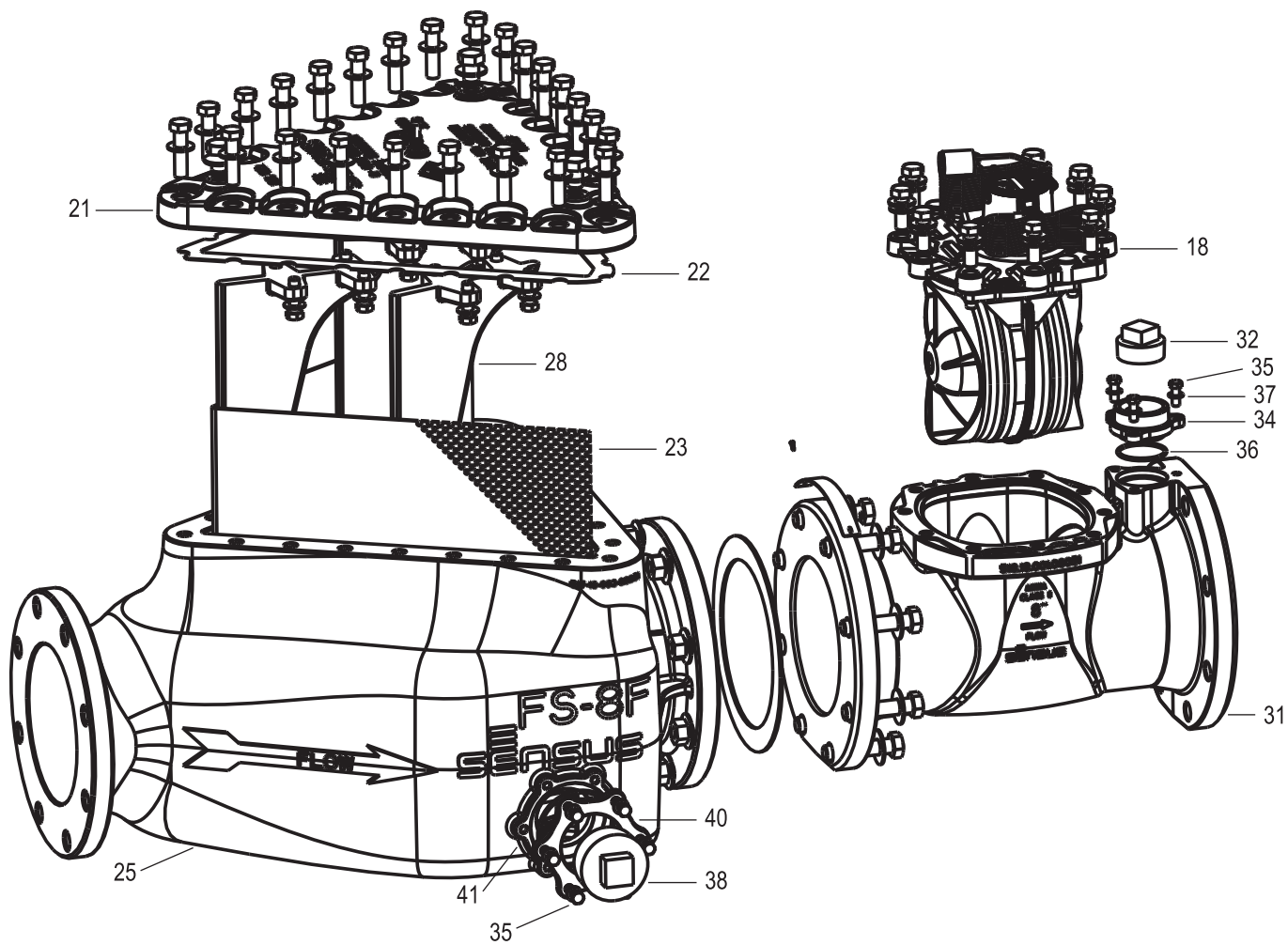


OMNI F²: 4", 6", 8" and 10"



OMNI F²: 4", 6", 8" and 10"

OMNI F²: 4" and 6"

OMNI F²: 8" and 10"

OMNI F²: 4" and 6"

ILL. No.	Name of Part
1	F ² Bonnet Lid
2	Hinge Pin
3	Bonnet
4	Bonnet Seal Screw
5	Register
5A	Register Pick-Up Probe O-Ring
6	Locking Ring Screw
7	Locking Ring
8	Fixing Ring
9	Chamber Cover Bolt
10B/C	Chamber Cover Bolt Washer
10/A	Chamber Cover Washer — Black Nylon
11	Chamber Cover
11A	Screw, Spring Hold Down
11B	Spring
12	Chamber Cover O-Ring or Gasket
13	Measuring Insert
14	Measuring Chamber Screw
15	Chamber Seal Gasket (not used on 10")
16	F ² Rotor
17	F ² Balance Plate
18	Measuring Chamber
19	Strainer Cover Cap Screw
20	Strainer Cover Bolt Washer
21	Strainer Cover
22	Strainer Cover Gasket
23	Strainer Screen
24	Drain Port
25	F ² Strainer Body
26	Vent Screw
27	Vent Washer
28	Strainer Screen Support
29	Washer
30	Screw
31	F ² Maincase
32	Test Plug
33	Test Port Cap (not shown)
34	Test Port Adapter

ILL. No.	Name of Part
35	Test Port and Drain Port Cap Screws
36	Test Port O-Ring
37	Test Port and Drain Port Washer
38	Drain Port Plug
39	Drain Port Cap (not shown)
40	Drain Port Adapter
41	Drain Port O-Ring

© All products purchased and services performed are subject to Sensus' terms of sale, available at either; <http://na.sensus.com/TC/TermsConditions.pdf> or 1-800-METER-IT. Sensus reserves the right to modify these terms and conditions in its own discretion without notice to the customer.

This document is for informational purposes only, and SENSUS MAKES NO EXPRESS WARRANTIES IN THIS DOCUMENT. FURTHERMORE, THERE ARE NO IMPLIED WARRANTIES, INCLUDING WITHOUT LIMITATION, WARRANTIES AS TO FITNESS FOR A PARTICULAR PURPOSE AND MERCHANTABILITY. ANY USE OF THE PRODUCTS THAT IS NOT SPECIFICALLY PERMITTED HEREIN IS PROHIBITED.