



STYLIST GROUP

SPECIFICATION

Seamless die-drawn construction of type 304, 18-8 stainless steel. Interior and top surfaces polished to a non-porous Hand-Blended Just Finish with high-lighted bowl rim. Fully coated underside insulates for sound, and reduces condensation. Straight-sided compartment with $1\frac{3}{4}$ " radius corners provides greater capacity. Self-rimming top mount Grip-Rim Plus with 300 series stainless steel mounting channels. Conforms to ASME/ANSI A112.19.3M. Drain punch #35 centered for Just J-35 unless otherwise specified.

TYPE 316 STAINLESS STEEL (check if applicable)

To be specified :

■ Faucet hole punching:

- ☐ (1) Hole Centered
- ☐ (2) Holes on 4" centers
- ☐ (3) Holes on 4" centers (illustrated)

□ Alternate Punching:

Faucet Model: _____
Punching required: _____

MODEL NO.	A	B	C	D	E	F	CUTOUT*
SLX-1617-A-GR	16	17	10	14	4-1/2	10	15-1/4 x 16-1/4
SLX-1815-A-GR	18	15	12	12	4-1/2	9	17-1/4 x 14-1/4
SLX-1921-A-GR	19	21	14	18	3-1/2	10-1/2	18-1/4 x 20-1/4
SLX-2017-A-GR	20	17	14	14	4-1/2	10-1/2	19-1/4 x 16-1/4
SLX-2019-A-GR	20	19	14	16	4-1/2	10-1/2	19-1/4 x 18-1/4

* Cutout dimensions shown (Front-to-Back) x (Left-to-Right) - corners may be square or up to 1/2" radius.

JUST MFG. COMPANY CONTINUES TO MAKE QUALITY AND FUNCTIONALITY A MARK OF THE JUST PRODUCT LINE. TO DO SO REQUIRES THAT WE RESERVE THE RIGHT TO CHANGE PRODUCT INFORMATION WITHOUT NOTICE. FOR THE MOST CURRENT AND ACCURATE INFORMATION REGARDING THE COMPLETE LINE OF **JUST** SINKS, FAUCETS AND DRAINS, CLICK ON THE **SPEC LINE DRAWINGS** LINK ON OUR WEB SITE AT www.justmfg.com

Job Name _____
Customer _____
Architect/Engineer _____

APPROVED FOR MANUFACTURING

MODEL NO. _____ QTY. _____
COMPANY _____
TITLE _____ DATE _____
SIGNATURE _____

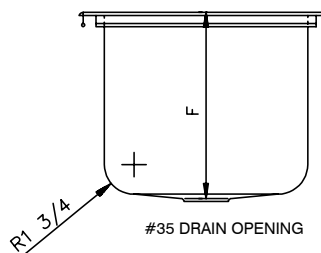
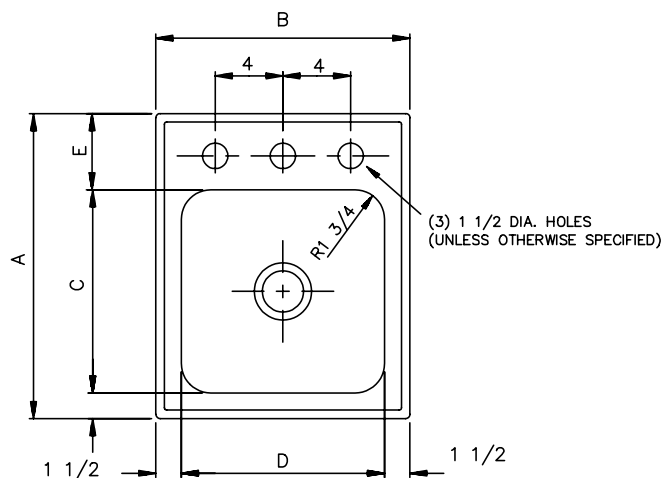
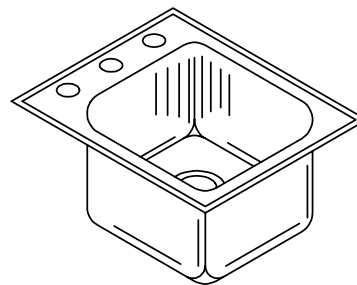
JUST MANUFACTURING COMPANY

9233 KING STREET . FRANKLIN PARK . ILLINOIS . 60131-2111

PH: 847-678-5150 . FAX: 847-678-6817 . E-MAIL: custserv@justmfg.com . www.justmfg.com

SLX - SERIES - A - 18 GA.

**SPACE SAVER - EXTRA DEEP
LEDGE TYPE - SINGLE BOWL**



SUBMITTAL

DATA

REVISED-5/2004