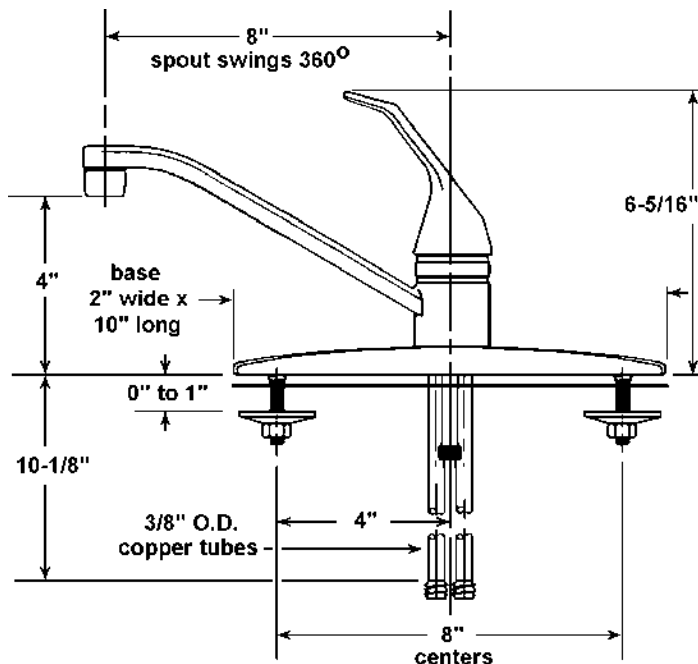




FAUCET GROUP

J-900

DECKMOUNT SINK FAUCET



TECHNICAL DATA CONSTRUCTION:

Single lever deck mounted kitchen sink faucet
8" brass swing spout
Brass body
Chrome plated die cast lever handle
Replaceable washerless valve cartridge
1/2" I.P.S. connections
Equipped with water saving aerator
Certified by IAPMO R&T to:
NSF/ANSI 61-Annex G
Lead-Plumbing Law

OPTIONS

AERATOR

Duo Stream Swivel "B"

VANDAL RESISTANT

Aerator "VR-A"

FINISH

Polished chrome

FLOW RATE

1.5 GPM

A.D.A. COMPLIANT

Yes

VARIANTS

J-901 = J-900 w/ Spray

Job Name _____
Customer _____
Architect/Engineer _____

APPROVED FOR MANUFACTURING

MODEL NO. _____ QTY. _____

COMPANY _____

TITLE _____ DATE _____

SIGNATURE _____

JUST MFG. COMPANY CONTINUES TO MAKE QUALITY AND FUNCTIONALITY A MARK OF THE JUST PRODUCT LINE. TO DO SO REQUIRES THAT WE RESERVE THE RIGHT TO CHANGE PRODUCT INFORMATION WITHOUT NOTICE. FOR THE MOST CURRENT AND ACCURATE INFORMATION REGARDING THE COMPLETE LINE OF JUST SINKS, FAUCETS AND DRAINS, CLICK ON THE **SPEC LINE DRAWINGS** LINK ON OUR WEB SITE AT www.justmfg.com

JUST MANUFACTURING COMPANY

9233 KING STREET . FRANKLIN PARK . ILLINOIS . 60131-2111

PH: 847-678-5150

FAX: 847-678-6817

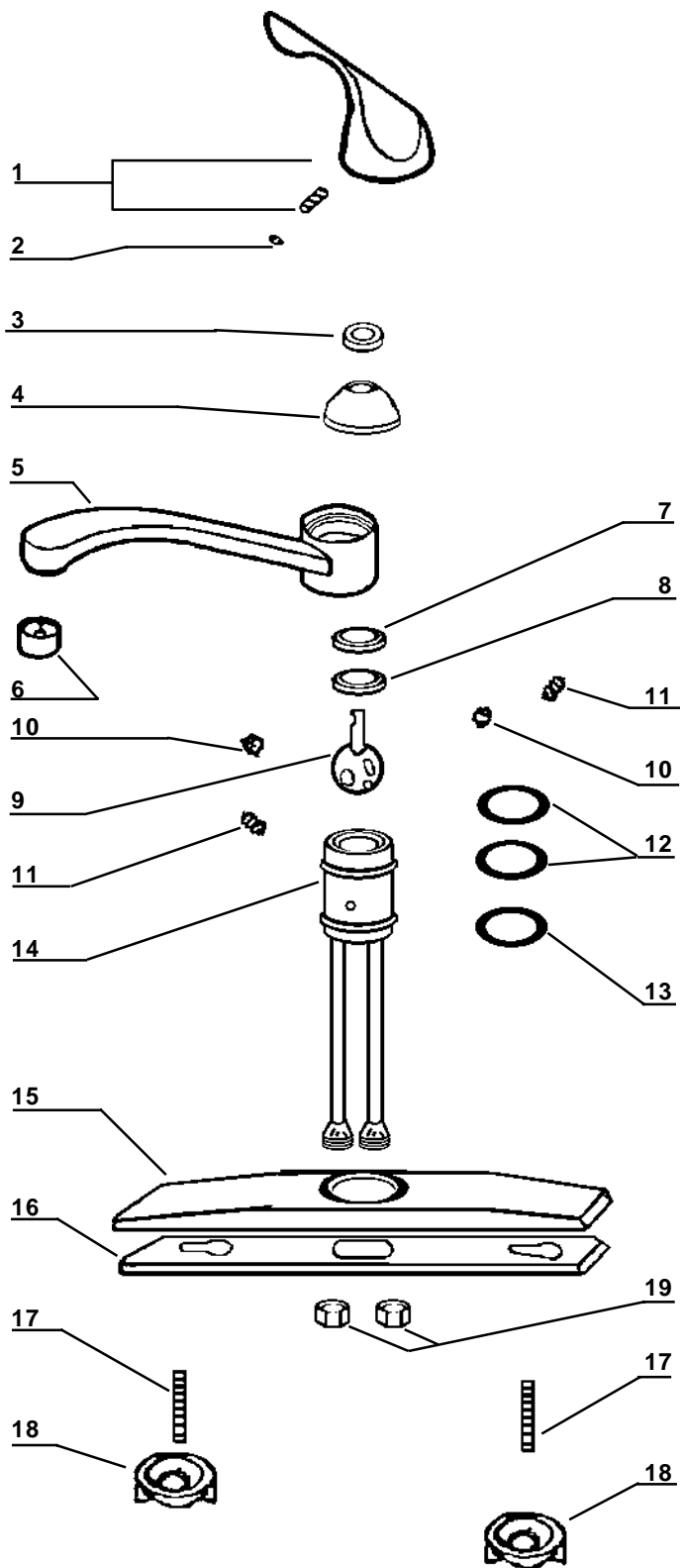
E-MAIL: custserv@justmfg.com

www.justmfg.com

REVISED-5/2004

SUBMITTAL DATA

J-900



FAUCET GROUP

DECKMOUNT SINK FAUCET



Item No.	Part No.	Description
1	15C-812-01	Lever handle assembly - Chrome
2	10-822-02	Hot/Cold Index
3	01-812-03	Bonnet Ring
4	15C-812-04	Bonnet
5	O3C-812-05	Spout
6	01C-407-099	Aerator assembly
7	20-812-06	Bonnet Cap
8	30-812-07	Cartridge gasket
9	10-812-08	Cartridge
10	30-425-16	Port seal ring
11	10-425-17	Port spring
12	30-812-16	O-Ring
13	20-812-17	Poly gasket
14	- -	Core(not available)
15	20-735-16	Deck cover
16	20-735-17	Deck base
17	- -	Core screws (not available)
18	20-812-13	Mounting hardware parts bag (2 sets per bag)
19	01-408-26B	Nuts (2 required)

Rev.-5/2004

JUST MFG. COMPANY CONTINUES TO MAKE QUALITY AND FUNCTIONALITY A MARK OF THE JUST PRODUCT LINE. TO DO SO REQUIRES THAT WE RESERVE THE RIGHT TO CHANGE PRODUCT INFORMATION WITHOUT NOTICE. FOR THE MOST CURRENT AND ACCURATE INFORMATION REGARDING THE COMPLETE LINE OF JUST SINKS, FAUCETS AND DRAINS, CLICK ON THE **SPEC LINE DRAWINGS** LINK ON OUR WEB SITE AT www.justmfg.com

JUST MANUFACTURING COMPANY

9233 KING STREET . FRANKLIN PARK . ILLINOIS . 60131-2111

PH: 847-678-5150 . FAX: 847-678-6817

E-MAIL: custserv@justmfg.com . www.justmfg.com