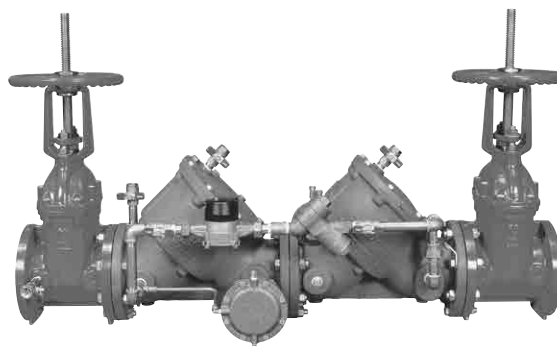


Series 826YD

Reduced Pressure Detector Assemblies

Size: 2½" – 10" (65 – 250mm)



826YD

Features

- The DuraCheck, features all stainless steel check assemblies for corrosion resistance, reduced fouling and longer valve life.
- DuraCast, ductile iron body for superior strength, corrosion resistance and lighter weight. By-pass line has water meter in series with an approved reduced pressure assembly.
- Low Head Loss
- Approved by the Foundation for Cross-Connection Control and Hydraulic Research at the University of Southern California.
- End Detail is Flanged

The FEBCO Series 826YD Reduced Pressure Detector Assemblies designed to protect drinking water supplies from dangerous cross-connections in accordance with national plumbing codes and water authority requirements for non-potable service applications specifically for use with Automatic fire sprinkler systems containing toxic substances.

Installation

The Reduced Pressure Detector Assembly should be installed horizontally with a suggested minimum clearance of 12" (300mm) between the assembly and the floor or grade. They must be installed where discharge from the relief valve will not be objectionable and can be positively drained away. They should be installed where easily accessible for testing and maintenance and must be protected from freezing. Thermal water expansion and/or water hammer downstream of the backflow preventer can cause excessive pressure. Excessive pressure situations should be eliminated to avoid possible damage to the system and assembly.

Operation

In a nonflow condition, check valves on the by-pass and mainline units are closed with pressure between the checks, called the zone, being maintained at least 5psi (35 kPa) lower than the inlet pressure and the relief valve is maintained closed. If the differential between the zone and the upstream pressure drops to 2psi (14kPa), the differential relief valve will open, maintaining proper zone differential. The by-pass reduced pressure backflow preventer will operate identically to the mainline assembly.

The by-pass opens to detect initial flow and the mainline opens for all other flows.

Models

- Less Gates
- Left hand by-pass
- Meter CFM/GPM

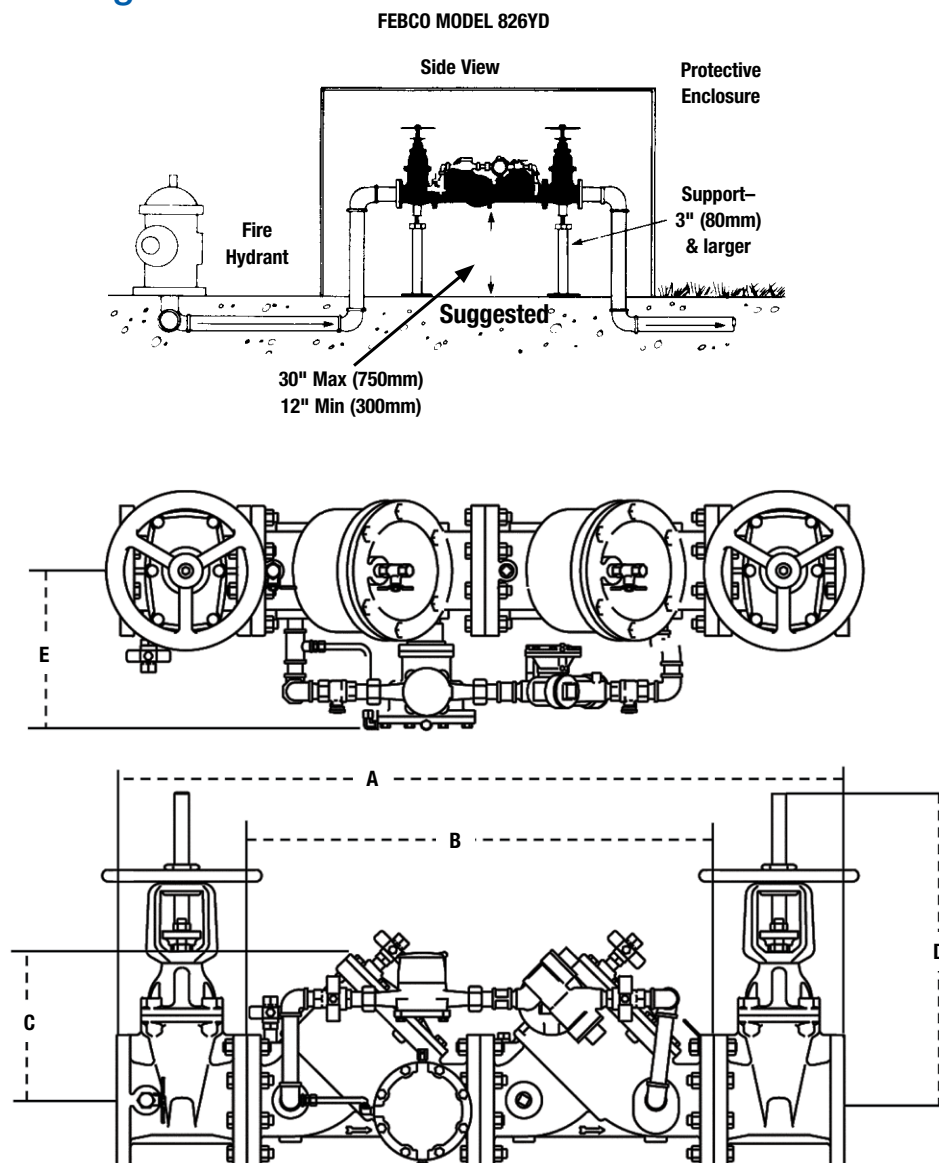
Approvals

- Approved by the Foundation for Cross-Connection Control and Hydraulic Research at the University of Southern California.†



† Valves must be supplied with resilient seated shutoff valves for USC and FM approvals to be in effect. UL and FM Listings only applicable with approved OS&Y gates.

Dimensions — Weights



Series 826YD

SIZE (DN)		DIMENSIONS										WEIGHT			
		A		B		C		D		E		gates		less gates	
in.	mm	in.	mm	in.	mm	in.	mm	in.	mm	in.	mm	lbs.	kgs.	lbs.	kgs.
2½	65	37¼	946	22⅞	562	7½	191	16⅞	416	10¼	260	243	534.6	134	294.8
3	80	41¼	1061	25⅞	651	8½	216	22¼	565	10½	267	298	655.6	154	338.8
4	100	50⅞	1281	32⅞	822	11	279	23¼	591	11	279	469	1031.8	194	426.8
6	150	59¼	1518	38⅞	981	14	356	30¼	765	12	305	752	1654.4	397	873.4
8	200	69⅞	1757	46⅞	1172	18	457	37¼	959	13	330	1207	2655.4	537	1181.4
10	250	84¼	2140	58⅞	1476	22	559	48	1219	14	356	1617	3557.4	957	2105.4

Dimensions shown are nominal.

NOTICE

Inquire with governing authorities for local installation requirements.