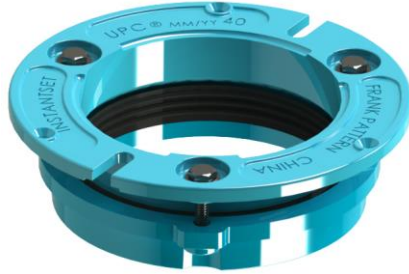


**CLOSET FLANGES: 30 30TC, 40, 40TC, 44, 46, AND OS40**

TAG \_\_\_\_\_



**Specification**

For industrial toilet installations.  
Designed to secure toilet to floor.

**Design Features**

- Cast Iron Top Ring and base ring are coated for corrosion resistance
- “Instant-Set” drain pipe attachment. No additional hardware required
- Stainless Steel Fasteners
- Models with test cap eliminate the need for additional drain pipe sealing caps for inspection
- Suitable for built-up hot mop roof systems and single ply roof systems.

**Agency Listings**

- Compliant to PS-97 standards listed in IAPMO File: 793
- Compliant to Uniform Plumbing Code (UPC®)
- Compliant to International Plumbing Code (IPC®)



**Installation**

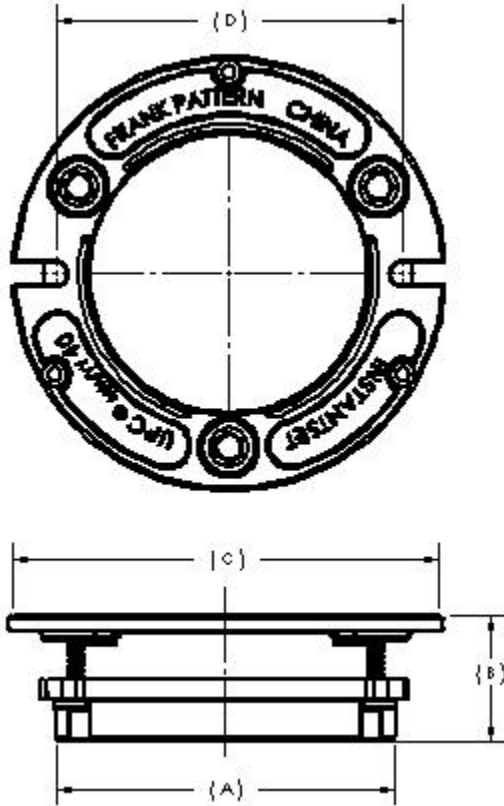
- Position drain assembly in place with drain pipe connected prior to pouring concrete.
- Position Frank Pattern closet flange assembly over drain pipe and secure to floor with 3 appropriate size flat head screws.
- Instant Set closet rings clamp on outside of drain pipe.
- Evenly tighten 3 bolts until secure drain is secure at .20” lbs. max.
- Install toilet per manufactures instructions.
- After leak testing drain system, cut-out exposed rubber seal using utility knife. Models with test cap only

Product Submittal	
Job Name:	
Date:	
Part Number	Quantity
Architect:	
Contractor:	

**CLOSET FLANGES: 30 30TC, 40, 40TC, 44, 46, AND OS40**

TAG \_\_\_\_\_

**Product Drawings**



**Details**

PART NUMBER	DESCRIPTION	NOMINAL DRAIN PIPE SIZE	DRAIN CONNECTION	DIMENSIONS (INCHES)			
				A	B	C	D
30	CLOSET RING, 3 X 2	3"	INSTANT SET	4-5/8	2-1/4	6-7/8	5-3/4
30TC	CLOSET RING, W/TEST CAP, 3 X 2	3"	INSTANT SET	4-5/8	2-1/5	6-7/9	5-3/5
40	CLOSET RING, 4 X 2	4"	INSTANT SET	5-1/2	2-1/16	6-15/16	5-5/8
40TC	CLOSET RING W/TEST CAP, 4 X 2	4"	INSTANT SET	5-1/2	1-7/8	7-1/16	5-5/8
44	CLOSET RING, DEEP, 4 X 4	4"	INSTANT SET	5-1/2	3-7/16	7	5-1/2
46	CLOSET RING, DEEP, 4 X 6	4"	INSTANT SET	5-1/2	4-13/16	7	5-1/2
*OS40	CLOSET RING, 3/4 OFFSET, 4 X 2	4"	INSTANT SET	5-1/2	2-1/8	7-11/16	5-3/4

**Replacement Parts**

PART NUMBER	DESCRIPTION	QTY
300-022-3	3" SEAL GASKET	1
300-022-3TC	3" SEAL GASKET WITH TEST	1
300-022-4	4" SEAL GASKET	1
300-022-4TC	4" SEAL GASKET WITH TEST	1
ICR-008	1/4"-20 STAINLESS STEEL BOLTS	3
WR-ICR	STAINLESS STEEL FLAT WASHER	3