

## PF3200 Series

# Two Piece Toilet Vitreous China



### Product Features

- Two-piece vitreous china, 12" RI
- Vacuum assisted (1.6gpf/6.0Lpf)
- Box rim with booster jets
- 2-1/8" glazed trapway
- Close coupled tank with cover
- 10" x 12" water surface
- Fluidmaster 400A ballcock
- Seat and supply not included
- Elongated bowl
- Sanitary bar for easy cleaning
- Chrome trip lever



PF3201 / PF3612

### Technical Information

Fixture:	
Configuration	two-piece toilet
Water per flush	1.6 gpf/6.0 lpf
Spud size	N/A
Passageway	2 1/8" glazed
Water area	10" X 12"
Water depth from rim	
Seat post hole centers	5 1/2"

### Included Components

- chrome trip lever

### Codes and Standards

- IAPMO/UPC
- ASME A112.19.2
- CSA B45.0
- CSA B45.1

### Specified Model

Model	Model Description	Color Finishes		
PF3200	Bowl only round front	<input type="radio"/> White	<input type="radio"/> Biscuit	<input type="radio"/> Bone
PF3201	Bowl only elongated	<input type="radio"/> White	<input type="radio"/> Biscuit	<input type="radio"/> Bone
PF3203	Bowl only ADA	<input type="radio"/> White	<input type="radio"/> Biscuit	<input type="radio"/> Bone
PF3612	Tank only 12" RI	<input type="radio"/> White	<input type="radio"/> Biscuit	<input type="radio"/> Bone



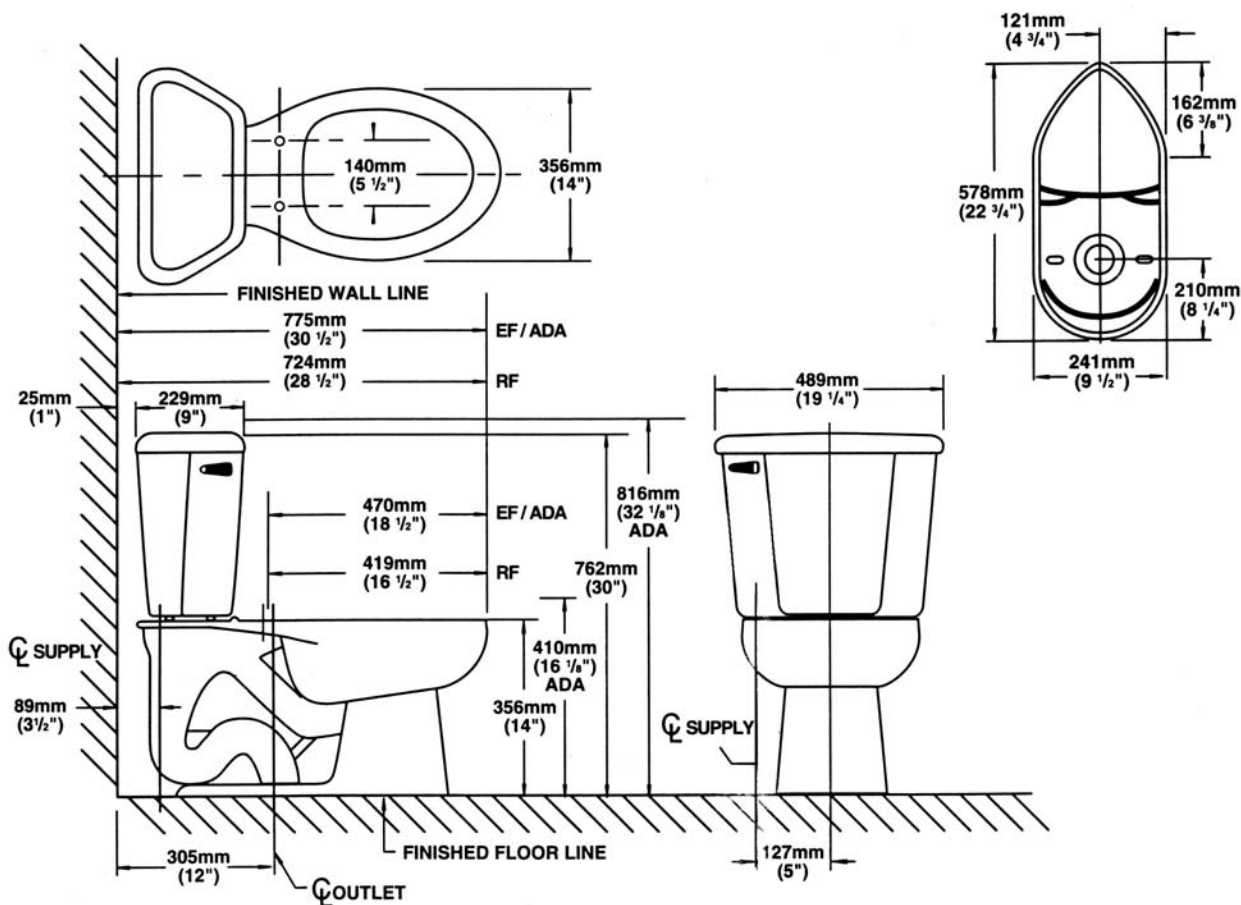
## PF3200 Series

# Two Piece Toilet Vitreous China



### Product Specification:

The combination toilet shall be made of vitreous china. Toilet shall be vacuum assisted 1.6 gpf (6.0 lpf). Toilet shall have 2 1/8" glazed trapway. Toilet shall include polished chrome trip lever. Toilet shall be ADA compliant with 16-1/8" high bowl (PF3203).



### Warranty and Codes:

This product comes complete with installation, operating, care and maintenance instructions. All PROFLO fixtures carry a 1-year limited warranty. This product meets or exceeds ASME/ANSI A112.19.2M. In an effort to continually improve our products, we will make design changes from time to time. We reserve the right to ship newly designed product to fill any order unless we agree in writing to do otherwise.

