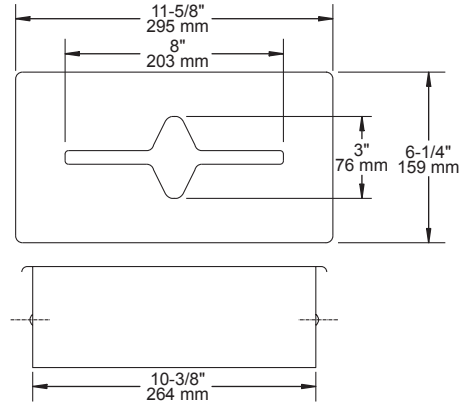
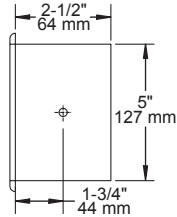
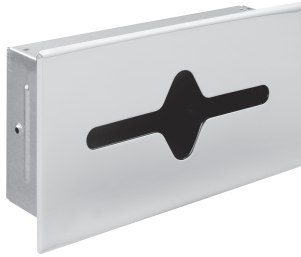


Recessed Fixtures

RECESSED TISSUE CABINET - 925



MATERIALS:

Recessed Box - 24 Gauge, Galvanized Steel
Snap Insert - 26 Gauge, Electro Galvanized Steel
Cover - 24 Gauge

INSTALLATION:

Vanity top or apron must be cut with a suitable opening to allow tissue withdrawal.
Install recessed box under vanity or behind apron with 4 - #8 x 3/4" round head zinc plated steel screws provided. Spring loaded door with knob at bottom of unit allows easy loading and unloading of tissue boxes.

SPECIFICATION:

Recessed tissue cabinet shall be model _____
(fill in model number) by Liberty Hardware Manufacturing Corporation.

FranklinBrass®
A Liberty Hardware Brand

Liberty Hardware Manufacturing Corporation • 140 Business Park Drive • Winston-Salem, NC 27107 • 800.542.3789 • www.libertyhardware.com

©2009 LHMC, A Masco Company