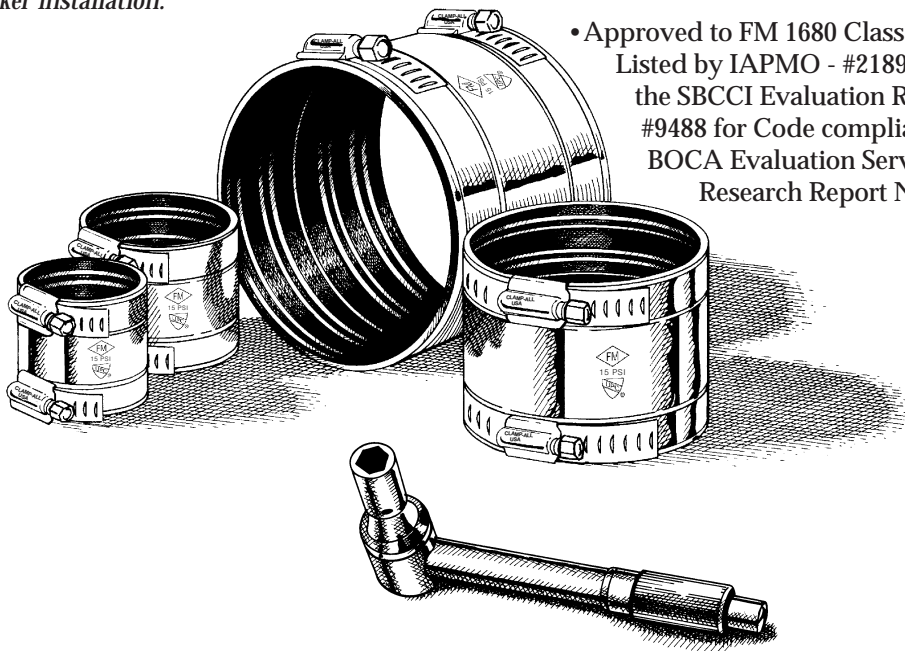


HI-TORQTM 125 Coupling

... the surest way to high reliability coupling installations

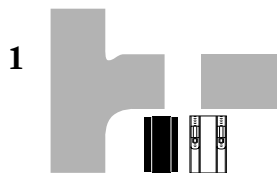
The HI-TORQ 125 coupling from Clamp-All[®] provides maximum strength for all hubless DWV systems in high risk environments — schools, hospitals, museums or wherever a 15 psi rating is required. Installation is quick, secure, and trouble-free.

- HI-TORQ 125 couplings are effective for joining all high-risk DWV piping systems, above or below grade, up to 15 psi (105 kPa) working pressure.
- HI-TORQ 125's unique *flexible rigidity*TM provides maximum strength to maintain alignment and hydrostatic integrity even at high thrusts or blockage pressure on mismatched pipes and fittings.
- HI-TORQ 125's high strength worm drive clamps take a full 125 in•lbs (14N•m) of torque, without stripping, to provide the most secure installation.
- HI-TORQ 125 couplings have just *two clamps* for sizes through 4" (100 mm), *four clamps* on sizes 5" (125 mm) to 10" (250 mm) and *six clamps* on sizes 12" (300mm) & 15" (375mm) — *for quicker installation.*
- HI-TORQ 125 provides maximum performance and reliability:
 - Shields are 24 gauge 304 18-8 chromium nickel stainless steel for exceptional corrosion resistance.
 - Durable one-piece molded Neoprene gasket features two sets of sealing beads on size 1 1/2" through 10" and three sets of sealing beads for 12" & 15" sizes on each side of the sealing sleeve, and a unique interlocking design which centers the sleeve within the housing for easy installation and added stability.
 - Slotted shield design compensates for mismatched pipe/fitting diameters and maintains alignment.
 - Worm drive screws are 305 stainless steel for high corrosion resistance.
 - Approved to FM 1680 Class I, 15 PSI; Listed by IAPMO - #2189; Refer to the SBCCI Evaluation Report #9488 for Code compliance; See BOCA Evaluation Services, Inc. Research Report No #9420.

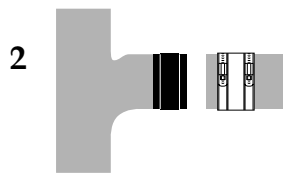


Clamp-All

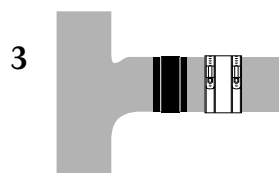
Quick & Easy Installation



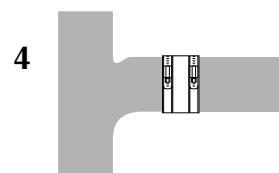
1 The cut ends of the pipe should be smooth and square.



2 Place neoprene gasket on end of pipe or fitting until it is firmly seated against the center stop.



3 Place stainless steel housing with clamps on end of other pipe and slip the pipe into the gasket until it is also firmly seated against the center stop.

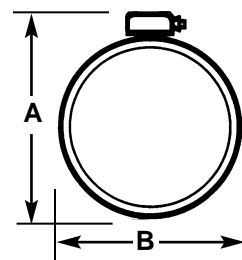


4 Slide the housing into position directly over the gasket. Using preset torque wrench, alternately tighten clamps to 125 in•lbs (14N•m) of torque. Recheck torque on all clamps before proceeding to next installation to assure an even and proper torque.

Note: Horizontal runs of pipe 5" diameter and larger must be braced at changes of direction and sway braced as necessary to prevent horizontal movement and maintain alignment.

HI-TORQ 125 Engineering & Ordering Information

Pipe Size in. (mm)	HI-TORQ 125 Part Numbers	Installed Dimension		Depth to Center Stop in. (mm)	Width of Coupling in. (mm)
		A in. (mm)	B in. (mm)		
1.5" (38)	□ 10015	2.75" (70)	2.25" (57)	1.44" (37)	3" (75)
2" (50)	□ 10020	3.25" (83)	2.75" (70)	1.44" (37)	3" (75)
3" (75)	□ 10030	4.25" (108)	3.75" (95)	1.44" (37)	3" (75)
4" (100)	□ 10040	5.25" (133)	4.75" (121)	1.44" (37)	3" (75)
5" (125)	□ 10050	6.25" (159)	5.75" (146)	1.94" (49)	4" (100)
6" (150)	□ 10060	7.25" (184)	6.75" (171)	1.94" (49)	4" (100)
8" (200)	□ 10080	9.25" (235)	8.75" (222)	1.94" (49)	4" (100)
10" (250)	□ 10100	11.50" (292)	11.00" (279)	1.94" (49)	4" (100)
12" (300)	□ 10120	13.50" (338)	13.00" (325)	2.76" (69)	5.62" (141)
15" (375)	□ 10150	16.75" (419)	17.25" (431)	2.76" (69)	5.62" (141)



High Performance Coupling Specification

Hubless cast iron soil pipe and fittings shall be joined using HI-TORQ 125 couplings, manufactured by Clamp-All Products, for all storm and sanitary systems, mains, branches and vents above and below grade.

Couplings shall be constructed of type 304 stainless steel with 305 stainless steel worm drive screws. The gasket material shall be neoprene and conform to ASTM C-564. The coupling assembly shall be torqued to specified requirements.

Clamp-All couplings meet or exceed the following performance standards:
FM 1680 Class I and ASTM C-1277.



For information, technical support or to order . . . call or write:

Clamp-All Products
2430 East Walton Blvd., Auburn Hills, MI 48326-1956
Telephone: 800-762-7255 • FAX: 248-373-3068 • www.ClampAll.com