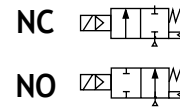




Pilot Operated
General Service Solenoid Valves
 Brass or Stainless Steel Bodies
 3/8" to 2 1/2" NPT



2/2
 SERIES
8210

Features

- Wide range of pressure ratings, sizes, and resilient materials provide long service life and low internal leakage.
- High Flow Valves for liquid, corrosive, and air/inert gas service.
- Industrial applications include:
 - Car wash
 - Laundry equipment
 - Air compressors
 - Industrial water control
 - Pumps

Construction

| Valve Parts in Contact with Fluids | | |
|------------------------------------|----------------------|---------------------|
| Body | Brass | 304 Stainless Steel |
| Seals and Discs | NBR or PTFE | |
| Disc-Holder | PA | |
| Core Tube | 305 Stainless Steel | |
| Core and Plugnut | 430F Stainless Steel | |
| Springs | 302 Stainless Steel | |
| Shading Coil | Copper | Silver |

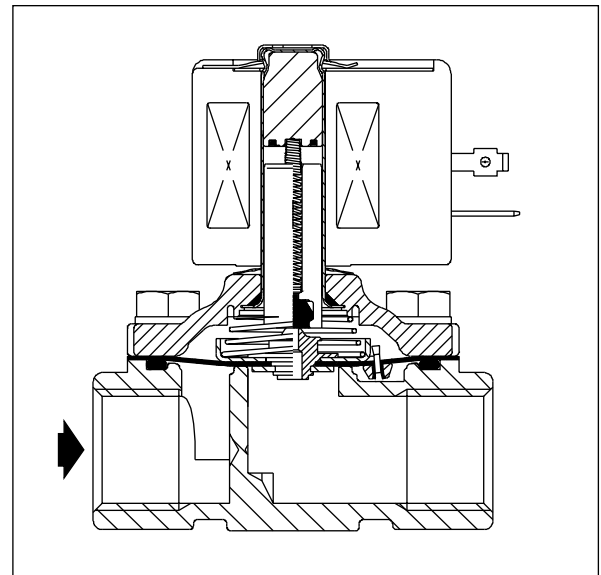
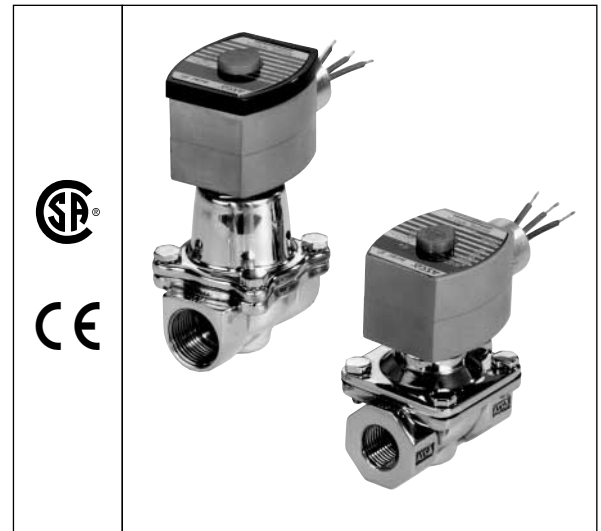
Electrical

| Standard Coil and Class of Insulation | Watt Rating and Power Consumption | | | | Spare Coil Part Number | | | |
|---------------------------------------|-----------------------------------|-------|------------|-----------|------------------------|--------|----------------|--------|
| | DC Watts | AC | | | General Purpose | | Explosionproof | |
| | | Watts | VA Holding | VA Inrush | AC | DC | AC | DC |
| F | - | 6.1 | 16 | 40 | 238210 | - | 238214 | - |
| F | 11.6 | 10.1 | 25 | 70 | 238610 | 238710 | 238614 | 238714 |
| F | 16.8 | 16.1 | 35 | 180 | 272610 | 97617 | 272614 | 97617 |
| F | - | 17.1 | 40 | 93 | 238610 | - | 238614 | - |
| F | - | 20 | 43 | 240 | 99257 | - | 99257 | - |
| F | - | 20.1 | 48 | 240 | 272610 | - | 272614 | - |
| H | 30.6 | - | - | - | - | 74073 | - | 74073 |
| F | 40.6 | - | - | - | - | 238910 | - | 238914 |

Standard Voltages: 24, 120, 240, 480 volts AC, 60 Hz (or 110, 220 volts AC, 50 Hz). 6, 12, 24, 120, 240 volts DC. Must be specified when ordering. Other voltages available when required.

Solenoid Enclosures

Standard: Red-Hat II - Watertight, Types 1, 2, 3, 3S, 4, and 4X; Red-Hat - Type I.
Optional: Red-Hat II - Explosionproof and Watertight, Types 3, 3S, 4, 4X, 6, 6P, 7, and 9; Red-Hat - Explosionproof and Watertight, Types 3, 4, 4X, 7, and 9.
 (To order, add prefix "EF" to catalog number, except Catalog Numbers 8210B57, 8210B58, and 8210B59. Valves not available with Explosionproof enclosures.)
 See *Optional Features Section* for other available options.



Nominal Ambient Temperature Ranges:

- Red-Hat II/
- Red-Hat AC: 32°F to 125°F (0°C to 52°C)
- Red-Hat II DC: 32°F to 104°F (0°C to 40°C)
- Red-Hat DC: 32°F to 77°F (0°C to 25°C)
 (104°F/40°C occasionally)

Refer to *Engineering Section* for details.

Approvals:

CSA certified. Red-Hat II meets applicable CE directives.
 Refer to *Engineering Section* for details.

Specifications (English units)

| Pipe Size (ins.) | Orifice Size (ins.) | Cv Flow Factor | Operating Pressure Differential (psi) | | | | | | | Max. Fluid Temp. °F | | Brass Body | | | Stainless Steel Body | | | Watt Rating/Class of Coil Insulation ⑦ | |
|--|---------------------|----------------|---------------------------------------|---------------|-------|---------------------|---------------|-------|---------------------|---------------------|-----|----------------|--------------------|--------------|----------------------|--------------------|--------------|--|--------|
| | | | Min. | Max. AC | | | Max. DC | | | AC | DC | Catalog Number | Constr. Ref. No. ④ | UL ⑤ Listing | Catalog Number | Constr. Ref. No. ④ | UL ⑤ Listing | AC | DC |
| | | | | Air-Inert Gas | Water | Light Oil @ 300 SSU | Air-Inert Gas | Water | Light Oil @ 300 SSU | | | | | | | | | | |
| NORMALLY CLOSED (Closed when de-energized), NBR or PTFE ② Seating | | | | | | | | | | | | | | | | | | | |
| 3/8 | 3/8 | 1.5 | ① | 150 | 125 | - | 40 | 40 | - | 180 | 150 | 8210G73 ③ | 1P | ● | 8210G36 ③ | 1P | ● | 6.1/F | 11.6/F |
| 3/8 | 5/8 | 3 | 0 | 150 | 150 | - | 40 | 40 | - | 180 | 150 | 8210G93 | 5D | ○ | - | - | - | 10.1/F | 11.6/F |
| 3/8 | 5/8 | 3 | 5 | 200 | 150 | 135 | 125 | 100 | 100 | 180 | 150 | 8210G1 | 6D | ○ | - | - | - | 6.1/F | 11.6/F |
| 3/8 | 5/8 | 3 | 5 | 300 | 300 | 300 | - | - | - | 175 | - | 8210G6 | 5D | ○ | - | - | - | 17.1/F | - |
| 1/2 | 7/16 | 2.2 | ① | 150 | 125 | - | 40 | 40 | - | 180 | 150 | 8210G15 ③ | 2P | ● | 8210G37 ③ | 2P | ● | 6.1/F | 11.6/F |
| 1/2 | 5/8 | 4 | 0 | 150 | 150 | - | 40 | 40 | - | 180 | 150 | 8210G94 | 5D | ○ | - | - | - | 10.1/F | 11.6/F |
| 1/2 | 5/8 | 4 | 0 | 150 | 150 | 125 | 40 | 40 | - | 175 | 150 | - | - | - | 8210G87 | 7D | ● | 17.1/F | 11.6/F |
| 1/2 | 5/8 | 4 | 5 | 200 | 150 | 135 | 125 | 100 | 100 | 180 | 150 | 8210G2 | 6D | ○ | - | - | - | 6.1/F | 11.6/F |
| 1/2 | 5/8 | 4 | 5 | 300 | 300 | 300 | - | - | - | 175 | - | 8210G7 | 5D | ○ | - | - | - | 17.1/F | - |
| 1/2 | 5/8 | 4 | 5 | 300 | 300 | - | 300 | 300 | - | 180 | 125 | 8210G227 | 5D | ○ | - | - | - | 17.1/F | 40.6/H |
| 3/4 | 5/8 | 4.5 | 0 | 150 | 150 | 125 | 40 | 40 | - | 175 | 150 | - | - | - | 8210G88 | 7D | ● | 17.1/F | 11.6/F |
| 3/4 | 3/4 | 5 | 5 | 125 | 125 | 125 | 100 | 90 | 75 | 180 | 150 | 8210G9 | 9D | ○ | - | - | - | 6.1/F | 11.6/F |
| 3/4 | 3/4 | 5 | 0 | 150 | 150 | - | 40 | 40 | - | 180 | 150 | 8210G95 | 8D | ○ | - | - | - | 10.1/F | 11.6/F |
| 3/4 | 3/4 | 6.5 | 5 | 250 | 150 | 100 | 125 | 125 | 125 | 180 | 150 | 8210G3 | 11D | ○ | - | - | - | 6.1/F | 11.6/F |
| 3/4 | 3/4 | 6 | 0 | - | - | - | 200 | 180 | 180 | - | 77 | 8210B26 ② ‡ | 10P | - | - | - | - | - | 30.6/H |
| 3/4 | 3/4 | 6 | 0 | 350 | 300 | 200 | - | - | - | 200 | - | 8210G26 ② ‡ | 40P | ● | - | - | - | 16.1F | - |
| 1 | 1 | 13 | 0 | - | - | - | 100 | 100 | 80 | - | 77 | 8210B54 ‡ | 31D | - | 8210D89 | 15D | - | - | 30.6/H |
| 1 | 1 | 13 | 0 | 150 | 125 | 125 | - | - | - | 180 | - | 8210G54 | 41D | ● | 8210G89 | 45D | ● | 16.1/F | - |
| 1 | 1 | 13 | 5 | 150 | 150 | 100 | 125 | 125 | 125 | 180 | 150 | 8210G4 | 12D | ○ | - | - | - | 6.1/F | 11.6/F |
| 1 | 1 | 13.5 | 0 | 300 | 225 | 115 | - | - | - | 200 | - | 8210G27 ‡ | 42P | ● | - | - | - | 20.1/F | - |
| 1 | 1 | 13.5 | 10 | 300 | 300 | 300 | - | - | - | 175 | - | 8210G78 | 3P | - | - | - | - | 17.1/F | - |
| 1 1/4 | 1 1/8 | 15 | 0 | - | - | - | 100 | 100 | 80 | - | 77 | 8210B55 ‡ | 32D | - | - | - | - | - | 30.6/H |
| 1 1/4 | 1 1/8 | 15 | 0 | 150 | 125 | 125 | - | - | - | 180 | - | 8210G55 | 43D | ● | - | - | - | 16.1/F | - |
| 1 1/4 | 1 1/8 | 15 | 5 | 150 | 150 | 100 | 125 | 125 | 125 | 180 | 150 | 8210G8 | 16D | ○ | - | - | - | 6.1/F | 11.6/F |
| 1 1/2 | 1 1/4 | 22.5 | 0 | - | - | - | 100 | 100 | 80 | - | 77 | 8210B56 ‡ | 33D | - | - | - | - | - | 30.6/H |
| 1 1/2 | 1 1/4 | 22.5 | 0 | 150 | 125 | 125 | - | - | - | 180 | - | 8210G56 ‡ | 44D | ● | - | - | - | 16.1/F | - |
| 1 1/2 | 1 1/4 | 22.5 | 5 | 150 | 150 | 100 | 125 | 125 | 125 | 180 | 150 | 8210G22 | 18D | ● | - | - | - | 6.1/F | 11.6/F |
| 2 | 1 3/4 | 43 | 5 | 150 | 125 | 90 | 50 | 50 | 50 | 180 | 150 | 8210G100 | 20P | ● | - | - | - | 6.1/F | 11.6/F |
| 2 1/2 | 1 3/4 | 45 | 5 | 150 | 125 | 90 | 50 | 50 | 50 | 180 | 150 | 8210G101 | 21P | ● | - | - | - | 6.1/F | 11.6/F |
| NORMALLY OPEN (Open when de-energized), NBR Seating (PA Disc-Holder, except as noted) | | | | | | | | | | | | | | | | | | | |
| 3/8 | 5/8 | 3 | 0 | 150 | 150 | 125 | 125 | 125 | 80 | 180 | 150 | 8210G33 | 23D | ● | - | - | - | 10.1/F | 11.6/F |
| 3/8 | 5/8 | 3 | 5 | 250 | 200 | 200 | 250 | 200 | 200 | 180 | 180 | 8210G11 ⑧ ⑨ | 39D | ● | - | - | - | 10.1/F | 11.6/F |
| 1/2 | 5/8 | 4 | 0 | 150 | 150 | 125 | 125 | 125 | 80 | 180 | 150 | 8210G34 | 23D | ● | - | - | - | 10.1/F | 11.6/F |
| 1/2 | 5/8 | 3 | 0 | 150 | 150 | 100 | 125 | 125 | 80 | 180 | 150 | - | - | - | 8210G30 | 37D | ● | 10.1/F | 11.6/F |
| 1/2 | 5/8 | 4 | 5 | 250 | 200 | 200 | 250 | 200 | 200 | 180 | 180 | 8210G12 ⑧ ⑨ | 39D | ● | - | - | - | 10.1/F | 11.6/F |
| 3/4 | 3/4 | 5.5 | 0 | 150 | 150 | 125 | 125 | 125 | 80 | 180 | 150 | 8210G35 | 25D | ● | - | - | - | 10.1/F | 11.6/F |
| 3/4 | 5/8 | 3 | 0 | 150 | 150 | 100 | 125 | 125 | 80 | 180 | 150 | - | - | - | 8210G38 | 38D | ● | 10.1/F | 11.6/F |
| 3/4 | 3/4 | 6.5 | 5 | - | - | - | 250 | 200 | 200 | - | 180 | 8210C13 | 24D | ● | - | - | - | - | 16.8/F |
| 3/4 | 3/4 | 6.5 | 5 | 250 | 200 | 200 | - | - | - | 180 | - | 8210G13 | 46D | ● | - | - | - | 16.1/F | - |
| 1 | 1 | 13 | 0 | 125 | 125 | 125 | - | - | - | 180 | - | 8210B57 ⑥ ⑩ | 34D | ● | - | - | - | 20/F | - |
| 1 | 1 | 13 | 5 | - | - | - | 125 | 125 | 125 | - | 180 | 8210D14 | 26D | ● | - | - | - | - | 16.8/F |
| 1 | 1 | 13 | 5 | 150 | 150 | 125 | - | - | - | 180 | - | 8210G14 | 47D | ● | - | - | - | 16.1/F | - |
| 1 1/4 | 1 1/8 | 15 | 0 | 125 | 125 | 125 | - | - | - | 180 | - | 8210B58 ⑥ ⑩ | 35D | ● | - | - | - | 20/F | - |
| 1 1/4 | 1 1/8 | 15 | 5 | - | - | - | 125 | 125 | 125 | - | 180 | 8210D18 | 28D | ● | - | - | - | - | 16.8/F |
| 1 1/4 | 1 1/8 | 15 | 5 | 150 | 150 | 125 | - | - | - | 180 | - | 8210G18 | 48D | ● | - | - | - | 16.1/F | - |
| 1 1/2 | 1 1/4 | 22.5 | 0 | 125 | 125 | 125 | - | - | - | 180 | - | 8210B59 ⑥ ⑩ | 36D | ● | - | - | - | 20/F | - |
| 1 1/2 | 1 1/4 | 22.5 | 5 | - | - | - | 125 | 125 | 125 | - | 180 | 8210D32 | 29D | ● | - | - | - | - | 16.8/F |
| 1 1/2 | 1 1/4 | 22.5 | 5 | 150 | 150 | 125 | - | - | - | 180 | - | 8210G32 | 49D | ● | - | - | - | 16.1/F | - |
| 2 | 1 3/4 | 43 | 5 | - | - | - | 125 | 125 | 125 | - | 150 | 8210I03 | 30P | ● | - | - | - | - | 16.8/F |
| 2 | 1 3/4 | 43 | 5 | 125 | 125 | 125 | - | - | - | 180 | - | 8210G103 | 50P | ● | - | - | - | 16.1/F | - |
| 2 1/2 | 1 3/4 | 45 | 5 | - | - | - | 125 | 125 | 125 | - | 150 | 8210I04 | 27P | ● | - | - | - | - | 16.8/F |
| 2 1/2 | 1 3/4 | 45 | 5 | 125 | 125 | 125 | - | - | - | 180 | - | 8210G104 | 51P | ● | - | - | - | 16.1/F | - |

Notes: ① 5 psi on Air; 1 psi on Water.
 ② Valve provided with PTFE main disc.
 ③ Valve includes Ultem (G.E. trademark) piston.
 ④ Letter "D" denotes diaphragm construction; "P" denotes piston construction.
 ⑤ ○ Safety Shutoff Valve; ● General Purpose Valve.
 Refer to Engineering Section (Approvals) for details.
 ⑥ Valves not available with Explosionproof enclosures.
 ⑦ On 50 hertz service, the watt rating for the 6.1/F solenoid is 8.1 watts.
 ⑧ AC construction also has PA seating.
 ⑨ No disc-holder.
 ⑩ Stainless Steel disc-holder.
 ‡ Must have solenoid mounted vertical and upright.

Specifications (Metric units)

| Pipe Size (ins.) | Orifice Size (mm) | Kv Flow Factor (m3/h) | Operating Pressure Differential (bar) | | | | | | | | | Max. Fluid Temp. °C | | Brass Body | | | Stainless Steel Body | | | Watt Rating/ Class of Coil Insulation ⑦ | |
|--|-------------------|-----------------------|---------------------------------------|---------------|-------|---------------------|---------------|---------|---------------------|----|----|---------------------|-----|----------------|--------------------|--------------|----------------------|--------------------|--------------|---|----|
| | | | Max. AC | | | | | Max. DC | | | | AC | DC | Catalog Number | Constr. Ref. No. ④ | UL ⑤ Listing | Catalog Number | Constr. Ref. No. ④ | UL ⑤ Listing | AC | DC |
| | | | Min. | Air-Inert Gas | Water | Light Oil @ 300 SSU | Air-Inert Gas | Water | Light Oil @ 300 SSU | | | | | | | | | | | | |
| NORMALLY CLOSED (Closed when de-energized), NBR or PTFE ② Seating | | | | | | | | | | | | | | | | | | | | | |
| 3/8 | 10 | 1.29 | ① | 10 | 9 | - | 3 | 3 | - | 81 | 65 | 8210G73 ③ | 1P | ● | 8210G36 ③ | 1P | ● | 6.1/F | 11.6/F | | |
| 3/8 | 16 | 2.57 | 0 | 10 | 10 | - | 3 | 3 | - | 81 | 65 | 8210G93 | 5D | ○ | - | - | - | 10.1/F | 11.6/F | | |
| 3/8 | 16 | 2.57 | 0.3 | 14 | 10 | 9 | 9 | 7 | 7 | 81 | 65 | 8210G1 | 6D | ○ | - | - | - | 6.1/F | 11.6/F | | |
| 3/8 | 16 | 2.57 | 0.3 | 21 | 21 | 21 | - | - | - | 79 | - | 8210G6 | 5D | ○ | - | - | - | 17.1/F | - | | |
| 1/2 | 11 | 1.89 | ① | 10 | 9 | - | 3 | 3 | - | 81 | 65 | 8210G15 ③ | 2P | ● | 8210G37 ③ | 2P | ● | 6.1/F | 11.6/F | | |
| 1/2 | 16 | 3.43 | 0 | 10 | 10 | - | 3 | 3 | - | 81 | 65 | 8210G94 | 5D | ○ | - | - | - | 10.1/F | 11.6/F | | |
| 1/2 | 16 | 3.43 | 0 | 10 | 10 | 9 | 3 | 3 | - | 79 | 65 | - | - | - | 8210G87 | 7D | ● | 17.1/F | 11.6/F | | |
| 1/2 | 16 | 3.43 | 0.3 | 14 | 10 | 9 | 9 | 7 | 7 | 81 | 65 | 8210G2 | 6D | ○ | - | - | - | 6.1/F | 11.6/F | | |
| 1/2 | 16 | 3.43 | 0.3 | 21 | 21 | 21 | - | - | - | 79 | - | 8210G7 | 5D | ○ | - | - | - | 17.1/F | - | | |
| 1/2 | 16 | 3.43 | 0.3 | 21 | 21 | - | 21 | 21 | - | 81 | 52 | 8210G227 | 5D | ○ | - | - | - | 17.1/F | 40.6F | | |
| 3/4 | 16 | 3.86 | 0 | 10 | 10 | 9 | 3 | 3 | - | 79 | 65 | - | - | - | 8210G88 | 7D | ● | 17.1/F | 11.6/F | | |
| 3/4 | 19 | 4.29 | 0.3 | 9 | 9 | 9 | 7 | 6 | 5 | 81 | 65 | 8210G9 | 9D | ○ | - | - | - | 6.1/F | 11.6/F | | |
| 3/4 | 19 | 4.29 | 0 | 10 | 10 | - | 3 | 3 | - | 81 | 65 | 8210G95 | 8D | ○ | - | - | - | 10.1/F | 11.6/F | | |
| 3/4 | 19 | 5.57 | 0.3 | 17 | 10 | 7 | 9 | 9 | 9 | 81 | 65 | 8210G3 | 11D | ○ | - | - | - | 6.1/F | 11.6/F | | |
| 3/4 | 19 | 5.14 | 0 | - | - | - | 14 | 12 | - | 25 | - | 8210B26 ② ‡ | 10P | - | - | - | - | - | 30.6/H | | |
| 3/4 | 19 | 5.14 | 0 | 24 | 21 | 14 | - | - | - | 92 | - | 8210G26 ② ‡ | 40P | ● | - | - | - | - | 16.1F | | |
| 1 | 25 | 11.14 | 0 | - | - | - | 7 | 7 | 6 | - | 25 | 8210B54 ‡ | 31D | - | 8210D89 | 15D | - | - | 30.6/H | | |
| 1 | 25 | 11.14 | 0 | 10 | 9 | 9 | - | - | - | 81 | - | 8210G54 | 41D | ● | 8210G89 | 45D | ● | 16.1/F | - | | |
| 1 | 25 | 11.14 | 0.3 | 10 | 10 | 7 | 9 | 9 | 9 | 81 | 65 | 8210G4 | 12D | ○ | - | - | - | 6.1/F | 11.6/F | | |
| 1 | 25 | 11.57 | 0 | 21 | 16 | 8 | - | - | - | 92 | - | 8210G27 ‡ | 42P | ● | - | - | - | 20.1/F | - | | |
| 1 | 25 | 11.57 | 0.7 | 21 | 21 | 21 | - | - | - | 79 | - | 8210G78 | 3P | - | - | - | - | 17.1/F | - | | |
| 1 1/4 | 29 | 12.86 | 0 | - | - | - | 7 | 7 | 6 | - | 25 | 8210B55 ‡ | 32D | - | - | - | - | - | 30.6/H | | |
| 1 1/4 | 29 | 12.86 | 0 | 10 | 9 | 9 | - | - | - | 81 | - | 8210G55 | 43D | ● | - | - | - | - | 16.1/F | | |
| 1 1/4 | 29 | 12.86 | 0.3 | 10 | 10 | 7 | 9 | 9 | 9 | 81 | 65 | 8210G8 | 16D | ○ | - | - | - | - | 6.1/F | | |
| 1 1/2 | 32 | 19.29 | 0 | - | - | - | 7 | 7 | 6 | - | 25 | 8210B56 ‡ | 33D | - | - | - | - | - | 30.6/H | | |
| 1 1/2 | 32 | 19.29 | 0 | 10 | 9 | 9 | - | - | - | 81 | - | 8210G56 ‡ | 44D | ● | - | - | - | - | 16.1/F | | |
| 1 1/2 | 32 | 19.29 | 0.3 | 10 | 10 | 7 | 9 | 9 | 9 | 81 | 65 | 8210G22 | 18D | ● | - | - | - | - | 6.1/F | | |
| 2 | 44 | 36.86 | 0.3 | 10 | 9 | 6 | 3 | 3 | 3 | 81 | 65 | 8210G100 | 20P | ● | - | - | - | - | 6.1/F | | |
| 2 1/2 | 44 | 38.57 | 0.3 | 10 | 9 | 6 | 3 | 3 | 3 | 81 | 65 | 8210G101 | 21P | ● | - | - | - | - | 6.1/F | | |
| NORMALLY OPEN (Open when de-energized), NBR Seating (PA Disc-Holder, except as noted) | | | | | | | | | | | | | | | | | | | | | |
| 3/8 | 16 | 2.57 | 0.0 | 10 | 10 | 9 | 9 | 9 | 6 | 81 | 65 | 8210G33 | 23D | ● | - | - | - | - | 10.1/F | | |
| 3/8 | 16 | 2.57 | 0.3 | 17 | 14 | 14 | 17 | 14 | 14 | 81 | 81 | 8210G11 ⑧ ⑨ | 39D | ● | - | - | - | - | 10.1/F | | |
| 1/2 | 16 | 3.43 | 0 | 10 | 10 | 9 | 9 | 9 | 6 | 81 | 65 | 8210G34 | 23D | ● | - | - | - | - | 10.1/F | | |
| 1/2 | 16 | 2.57 | 0 | 10 | 10 | 7 | 9 | 9 | 6 | 81 | 65 | - | - | - | 8210G30 | 37D | ● | 10.1/F | 11.6/F | | |
| 1/2 | 16 | 3.43 | 0.3 | 17 | 14 | 14 | 17 | 14 | 14 | 81 | 81 | 8210G12 ⑧ ⑨ | 39D | ● | - | - | - | - | 10.1/F | | |
| 3/4 | 19 | 4.71 | 0 | 10 | 10 | 9 | 9 | 9 | 6 | 81 | 65 | 8210G35 | 25D | ● | - | - | - | - | 10.1/F | | |
| 3/4 | 16 | 2.57 | 0 | 10 | 10 | 7 | 9 | 9 | 6 | 81 | 65 | - | - | - | 8210G38 | 38D | ● | 10.1/F | 11.6/F | | |
| 3/4 | 19 | 5.57 | 0.3 | - | - | - | 17 | 14 | 14 | - | 81 | 8210C13 | 24D | ● | - | - | - | - | 16.8/F | | |
| 3/4 | 19 | 5.57 | 0.3 | 17 | 14 | 14 | - | - | - | 81 | - | 8210G13 | 46D | ● | - | - | - | - | 16.1/F | | |
| 1 | 25 | 11.14 | 0 | 9 | 9 | 9 | - | - | - | 81 | - | 8210B57 ⑥ ⑩ | 34D | ● | - | - | - | - | 20/F | | |
| 1 | 25 | 11.14 | 0.3 | - | - | - | 9 | 9 | 9 | - | 81 | 8210D14 | 26D | ● | - | - | - | - | 16.8/F | | |
| 1 | 25 | 11.14 | 0.3 | 10 | 10 | 9 | - | - | - | 81 | - | 8210G14 | 47D | ● | - | - | - | - | 16.1/F | | |
| 1 1/4 | 29 | 12.86 | 0 | 9 | 9 | 9 | - | - | - | 81 | - | 8210B58 ⑥ ⑩ | 35D | ● | - | - | - | - | 20/F | | |
| 1 1/4 | 29 | 12.86 | 0.3 | - | - | - | 9 | 9 | 9 | - | 81 | 8210D18 | 28D | ● | - | - | - | - | 16.8/F | | |
| 1 1/4 | 29 | 12.86 | 0.3 | 10 | 10 | 9 | - | - | - | 81 | - | 8210G18 | 48D | ● | - | - | - | - | 16.1/F | | |
| 1 1/2 | 32 | 19.29 | 0 | 9 | 9 | 9 | - | - | - | 81 | - | 8210B59 ⑥ ⑩ | 36D | ● | - | - | - | - | 20/F | | |
| 1 1/2 | 32 | 19.29 | 0.3 | - | - | - | 9 | 9 | 9 | - | 81 | 8210D32 | 29D | ● | - | - | - | - | 16.8/F | | |
| 1 1/2 | 32 | 19.29 | 0.3 | 10 | 10 | 9 | - | - | - | 81 | - | 8210G32 | 49D | ● | - | - | - | - | 16.1/F | | |
| 2 | 44 | 36.86 | 0.3 | - | - | - | 9 | 9 | 9 | - | 65 | 8210I03 | 30P | ● | - | - | - | - | 16.8/F | | |
| 2 | 44 | 36.86 | 0.3 | 9 | 9 | 9 | - | - | - | 81 | - | 8210G103 | 50P | ● | - | - | - | - | 16.1/F | | |
| 2 1/2 | 44 | 38.57 | 0.3 | - | - | - | 9 | 9 | 9 | - | 65 | 8210I04 | 27P | ● | - | - | - | - | 16.8/F | | |
| 2 1/2 | 44 | 38.57 | 0.3 | 9 | 9 | 9 | - | - | - | 81 | - | 8210G104 | 51P | ● | - | - | - | - | 16.1/F | | |

Notes: ① 0.3 bar on Air; 0.0 bar on Water.
 ② Valve provided with PTFE main disc.
 ③ Valve includes Ultem (G.E. trademark) piston.
 ④ Letter "D" denotes diaphragm construction; "P" denotes piston construction.
 ⑤ ○ Safety Shutoff Valve; ● General Purpose Valve.
 Refer to Engineering Section (Approvals) for details.

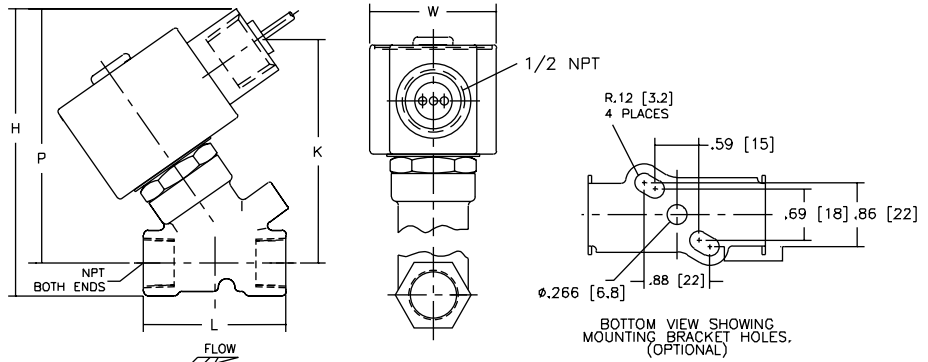
⑥ Valves not available with Explosionproof enclosures.
 ⑦ On 50 hertz service, the watt rating for the 6.1/F solenoid is 8.1 watts.
 ⑧ AC construction also has PA seating.
 ⑨ No disc-holder.
 ⑩ Stainless Steel disc-holder.
 ‡ Must have solenoid mounted vertical and upright.

Dimensions: inches (mm)

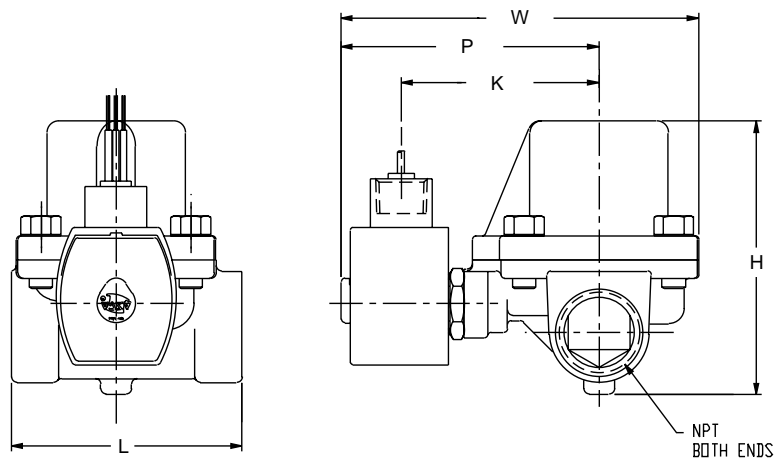
| Constr. Ref. No. | | H | K | L | P | W |
|------------------|------|------|------|------|------|------|
| 1* | ins. | 3.85 | 3.00 | 1.91 | 3.41 | 1.69 |
| | mm | 98 | 76 | 49 | 87 | 43 |
| 2* | ins. | 4.17 | 3.25 | 2.28 | 3.63 | 1.69 |
| | mm | 106 | 83 | 58 | 92 | 43 |
| 3 | ins. | 4.44 | 3.22 | 3.75 | 4.19 | 5.81 |
| | mm | 113 | 82 | 95 | 106 | 147 |
| 5 | ins. | 3.84 | 2.31 | 2.75 | 3.28 | 2.28 |
| | mm | 98 | 59 | 70 | 83 | 58 |
| 6* | ins. | 3.38 | 1.94 | 2.75 | 2.80 | 2.28 |
| | mm | 86 | 49 | 70 | 71 | 58 |
| 7 | ins. | 4.19 | 2.50 | 2.81 | 3.47 | 2.39 |
| | mm | 106 | 64 | 71 | 88 | 61 |
| 8 | ins. | 4.13 | 2.47 | 2.81 | 3.44 | 2.29 |
| | mm | 105 | 63 | 71 | 87 | 58 |
| 9* | ins. | 3.66 | 2.10 | 2.81 | 2.96 | 2.28 |
| | mm | 93 | 53 | 71 | 75 | 58 |
| 10* ^① | ins. | 5.25 | X | 2.81 | 4.59 | 2.31 |
| | mm | 133 | X | 71 | 117 | 59 |
| 11* | ins. | 4.16 | 2.66 | 3.84 | 3.52 | 2.75 |
| | mm | 106 | 68 | 98 | 89 | 70 |
| 12 | ins. | 5.64 | 3.15 | 3.75 | 4.01 | 3.36 |
| | mm | 143 | 80 | 95 | 102 | 85 |
| 15* | ins. | 5.34 | X | 3.75 | 4.47 | 3.84 |
| | mm | 136 | X | 95 | 114 | 98 |
| 16 | ins. | 5.64 | 3.15 | 3.66 | 4.01 | 3.56 |
| | mm | 143 | 80 | 93 | 102 | 90 |
| 18 | ins. | 6.11 | 3.30 | 4.38 | 4.16 | 3.92 |
| | mm | 155 | 84 | 111 | 106 | 100 |
| 20* | ins. | 7.33 | 3.71 | 5.06 | 4.57 | 4.87 |
| | mm | 186 | 94 | 129 | 116 | 124 |
| 21* | ins. | 7.33 | 3.71 | 5.50 | 4.57 | 4.87 |
| | mm | 186 | 94 | 140 | 116 | 124 |
| 23 | ins. | 4.35 | 2.65 | 2.75 | 3.79 | 2.28 |
| | mm | 110 | 67 | 70 | 96 | 58 |
| 24 | ins. | 5.06 | X | 3.78 | 4.44 | 2.75 |
| | mm | 129 | X | 96 | 113 | 70 |
| 25 | ins. | 4.64 | 2.81 | 2.81 | 3.94 | 2.28 |
| | mm | 118 | 71 | 71 | 100 | 58 |
| 26 | ins. | 6.53 | X | 3.75 | 4.91 | 3.19 |
| | mm | 166 | X | 95 | 125 | 81 |
| 27 | ins. | 8.22 | X | 5.50 | 5.47 | 4.87 |
| | mm | 209 | X | 140 | 139 | 124 |
| 28 | ins. | 6.53 | X | 3.66 | 4.91 | 3.19 |
| | mm | 166 | X | 93 | 125 | 81 |
| 29 | ins. | 7.03 | X | 4.38 | 5.06 | 4.40 |
| | mm | 179 | X | 111 | 129 | 112 |

① Valves must be mounted with solenoid vertical and upright.
* DC dimensions slightly larger.

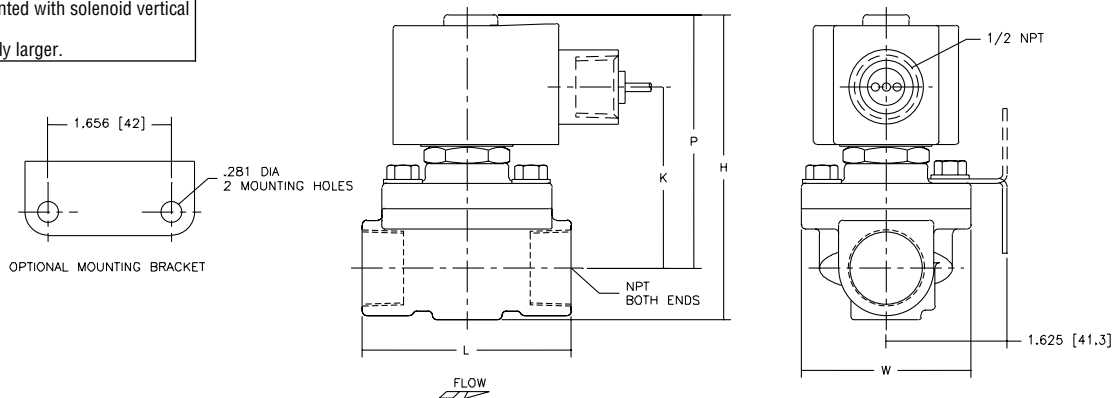
Constr. Refs. 1, 2



Constr. Ref. 3



Constr. Refs. 5-9, 11, 20, 21, 23, 25, 37, 38

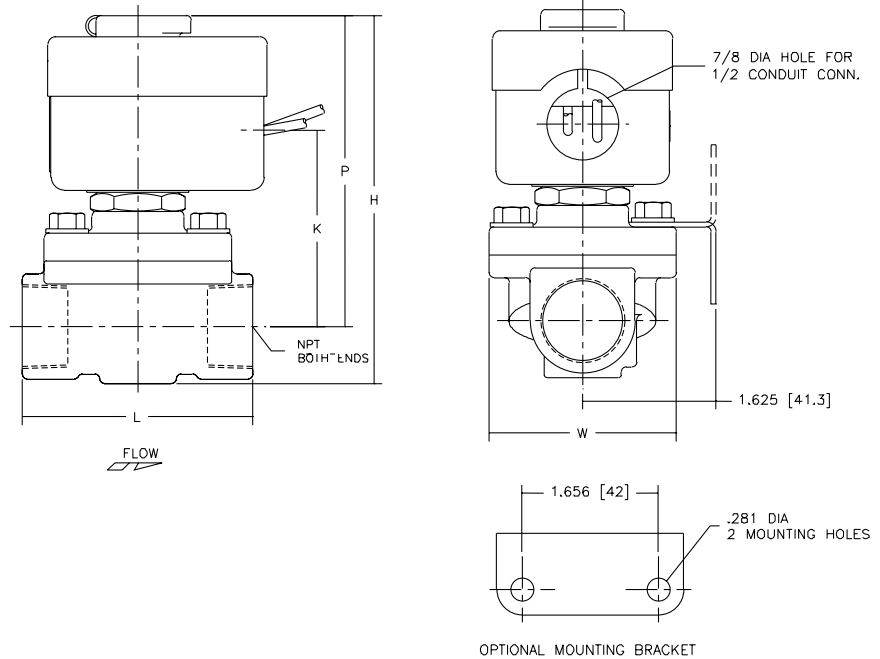


Dimensions: inches (mm)

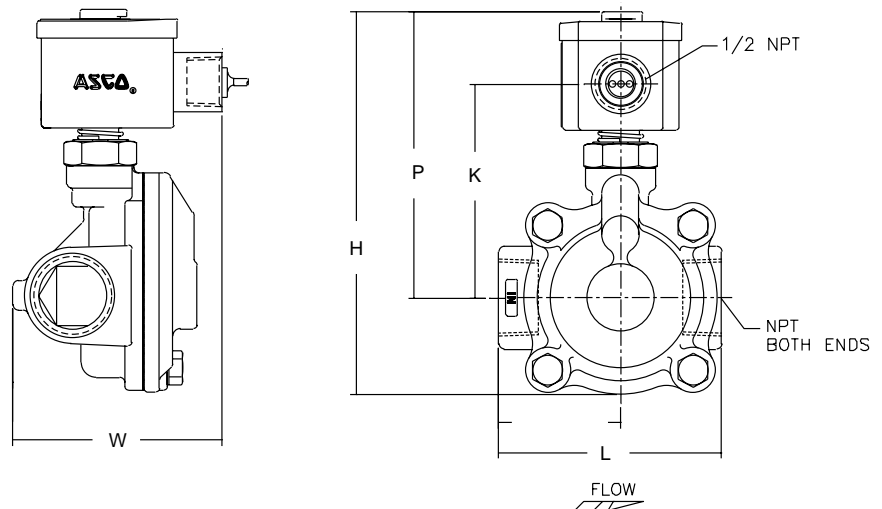
| Constr. Ref. No. | | H | K | L | P | W |
|------------------|------|------|------|------|------|------|
| 30 | ins. | 8.22 | X | 5.06 | 5.47 | 4.87 |
| | mm | 209 | X | 129 | 139 | 124 |
| 31 | ins. | 5.25 | X | 3.75 | 4.44 | 3.25 |
| | mm | 133 | X | 95 | 113 | 83 |
| 32 | ins. | 5.69 | X | 3.66 | 4.69 | 3.25 |
| | mm | 145 | X | 93 | 119 | 83 |
| 33 | ins. | 6.06 | X | 4.38 | 4.94 | 3.91 |
| | mm | 154 | X | 111 | 125 | 99 |
| 34 | ins. | 6.91 | X | 3.75 | 6.09 | 3.25 |
| | mm | 176 | X | 95 | 155 | 83 |
| 35 | ins. | 7.34 | X | 3.66 | 6.34 | 3.25 |
| | mm | 186 | X | 93 | 161 | 83 |
| 36 | ins. | 7.66 | X | 4.38 | 6.56 | 3.91 |
| | mm | 195 | X | 111 | 167 | 99 |
| 37 | ins. | 4.61 | 2.75 | 2.81 | 3.89 | 2.39 |
| | mm | 117 | 70 | 71 | 99 | 61 |
| 38 | ins. | 4.61 | 2.75 | 2.81 | 3.89 | 2.39 |
| | mm | 117 | 70 | 71 | 99 | 61 |
| 39 | ins. | 5.42 | 2.31 | 2.75 | 4.86 | 3.80 |
| | mm | 138 | 59 | 70 | 123 | 97 |
| 40 | ins. | 5.20 | 3.29 | 2.81 | 4.50 | 2.28 |
| | mm | 132 | 83 | 71 | 114 | 58 |
| 41 | ins. | 5.13 | 3.10 | 3.75 | 4.32 | 3.25 |
| | mm | 130 | 79 | 95 | 110 | 83 |
| 42 | ins. | 6.43 | 4.40 | 3.93 | 5.62 | 3.25 |
| | mm | 163 | 112 | 100 | 143 | 83 |
| 43 | ins. | 5.57 | 3.35 | 3.66 | 4.57 | 3.25 |
| | mm | 142 | 85 | 93 | 116 | 83 |
| 44 | ins. | 5.90 | 3.57 | 4.38 | 4.79 | 3.91 |
| | mm | 150 | 91 | 111 | 122 | 99 |
| 45 | ins. | 5.26 | 3.17 | 3.75 | 4.38 | 3.84 |
| | mm | 134 | 81 | 95 | 111 | 98 |
| 46 | ins. | 4.95 | 3.10 | 3.84 | 4.31 | 2.75 |
| | mm | 126 | 79 | 98 | 110 | 70 |
| 47 | ins. | 6.43 | 3.59 | 3.75 | 4.81 | 3.52 |
| | mm | 163 | 91 | 95 | 122 | 90 |
| 48 | ins. | 6.43 | 3.59 | 3.66 | 4.81 | 3.73 |
| | mm | 163 | 91 | 93 | 122 | 95 |
| 49 | ins. | 6.91 | 3.75 | 4.38 | 4.96 | 4.40 |
| | mm | 176 | 95 | 111 | 126 | 112 |
| 50 | ins. | 8.13 | 4.15 | 5.06 | 5.37 | 4.87 |
| | mm | 207 | 105 | 129 | 136 | 124 |
| 51 | ins. | 8.13 | 4.15 | 5.50 | 5.37 | 5.18 |
| | mm | 207 | 105 | 140 | 136 | 132 |

IMPORTANT: Valves may be mounted in any position, except as noted in specifications table.

Constr. Refs. 10, 15, 24, 26-36



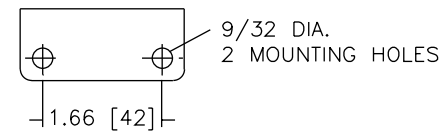
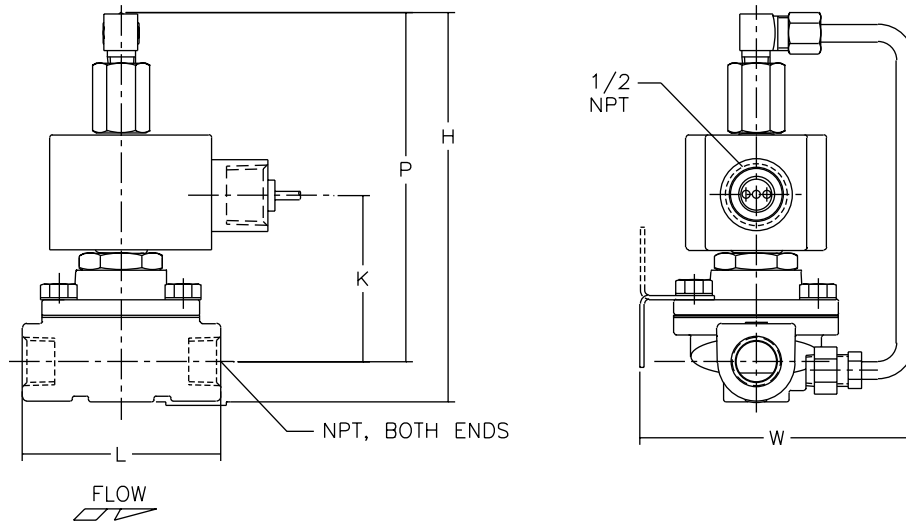
Constr. Refs. 12, 16, 18



Note: Valve must be mounted with solenoid vertical and upright.

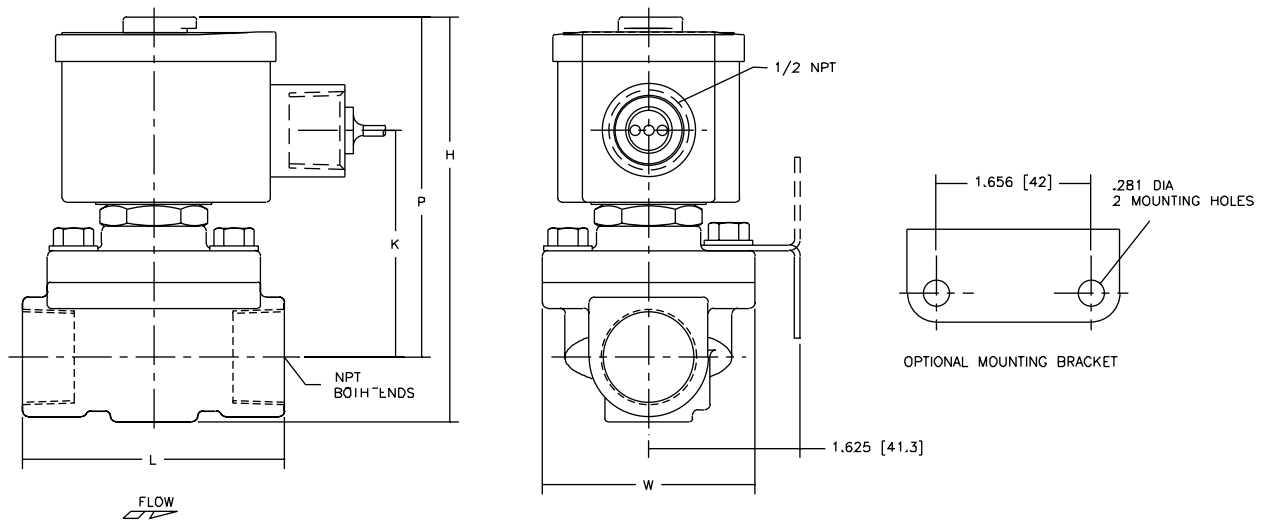
Dimensions: inches (mm)

Constr. Refs. 39



SHOWING MOUNTING
BRACKET ONLY

Constr. Refs. 40-51



OPTIONAL MOUNTING BRACKET