

# TECHNICAL DATA



Franklin Brass MFG. CO.  
A MASCO COMPANY  
P.O. Box 4887  
Carson, CA 90749-4887  
(310) 885-3200 • (800) 421-3375  
FAX-(310)885-3277  
www.franklinbrass.com

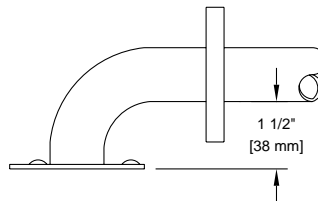
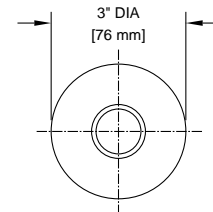
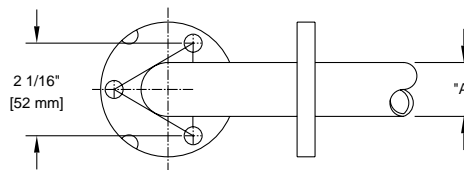
5600, 5700, 5800

## GRAB BARS (CONCEALED MOUNTING)

Specify Model Required

(See reverse side for lengths and configurations available)

- ☐ Model 5600 - 1 1/2" O.D. satin stainless steel tubing; satin stainless steel flanges
- ☐ Model 5700 - 1 1/4" O.D. satin stainless steel tubing; satin stainless steel flanges
- ☐ Model 5800 - 1" O.D. satin stainless steel tubing; satin stainless steel flanges



MODEL #	DIM "A"
5600	1 1/2" O.D.
5700	1 1/4" O.D.
5800	1" O.D.

**MATERIALS:** 5600 (1 1/2" O.D.), 5700 (1 1/4" O.D.), and 5800 (1" O.D.) tubing is of .049 (18 gauge) type 304 stainless steel with #4 satin finish. Wall flanges are of .075 (14 gauge) type 304 stainless steel. Snap lock cover flanges are of .035 (20 gauge) stainless steel with #4 satin finish. Wall flanges are heliarc welded to tubing.

**OPTIONS:** Add suffix 'PS' to catalog number for peened surface.  
Add suffix 'BS' to catalog number for bright surface.  
Add suffix 'PSBS' to catalog number for peened/bright surface.  
Add suffix 'PB' to catalog number for polished solid brass with clear epoxy powder coat. Available in 5700 series. Tubing is 1 1/4" .045 wall thickness. Cover flange is 20 gauge. Wall flange is 14 gauge x 3" diameter.  
Add suffix 'W' to catalog number for polyester powder coated white finish. Available in 5700 and 5600 series.

**INSTALLATION:** Install grab bar with 3- #10 x 2" panhead stainless steel screws provided for each end wall flange and 2- #10 x 2" panhead stainless steel screws provided for each center wall flange. Slide cover flanges over wall flanges and press firmly to complete installation.

Wood blocking is preferable behind all wall surfaces. If wood blocking is not available, the following optional fasteners and suggested:

Tile/Masonry - Plastic or lead anchors  
Plaster/Drywall - Toggle bolts

Note: 5600, 5700 and 5800 series grab bars are engineered to meet 1000 lb. pull (500 lb. pull for 5700PB series) when properly installed. 5600 and 5700 series meet ADA, ANSI, HUD and Federal Specifications.

**SPECIFICATION:** Surface mounted grab bar shall be model \_\_\_\_\_ (fill in model number)  
by Franklin Brass Mfg. Co., Los Angeles, Ca.

CONTINUED ON REVERSE SIDE