

# BB-SC 100 & S02

# 1" - 2-1/2"

Approved by: NYC Board of Stds. & Appeals,  
Cal. #996-81-SM (175psi)  
720-83-SA (350 & 500 psi)

**BRONZE BUTTERFLY VALVE**  
**ONE-PIECE, FULL-PORT**  
**175 PSI**  
**THREADED ENDS**



## DIMENSIONS

Valve Size					
DIM	1"	1-1/4"	1-1/2"	2"	2-1/2"
A	2.13	2.63	2.88	3.25	4.13
B <sup>1</sup>	3.16	3.31	3.41	3.63	3.82
C	1.56	1.94	2.19	2.75	3.19
D	1.72	2.11	2.38	3.07	3.50
J <sup>2</sup>	4.16	4.16	4.51	4.76	4.66
K	.66	.73	.73	.79	1.18
L	.83	.90	.10	1.41	1.29
M-40 <sup>3</sup>	1.10	1.38	1.61	2.07	2.47
M-80 <sup>4</sup>	.96	1.28	1.50	1.94	2.32
N-40 <sup>5</sup>	2.25	2.00	2.50	2.25	10.00
W <sup>6</sup>	1.13	1.25	1.41	1.69	1.75

ALL DIMENSIONS-INCHES

<sup>1</sup> Pertains to BB-SC100 only.

<sup>2</sup> Pertains to BB-SCS02 only.

<sup>3</sup> M-40 ARE DIMENSIONS USING SCHEDULE 40 PIPE

<sup>4</sup> M-80 ARE DIMENSIONS USING SCHEDULE 80 PIPE

<sup>5</sup> N-40 IS FLOW RESISTANCE EXPRESSED IN EQUIVALENT LENGTH OF SCHEDULE 40 PIPE

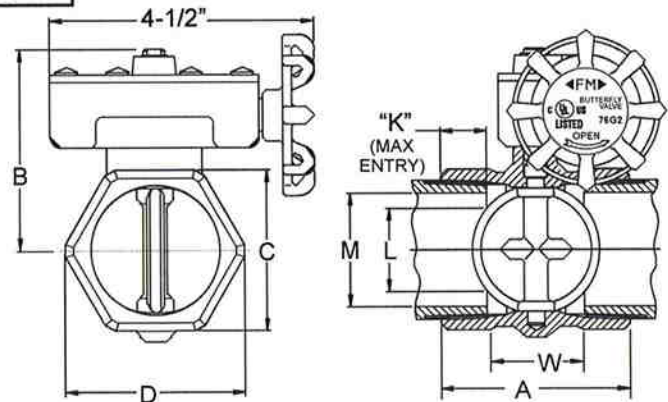
<sup>6</sup> W IS THE WRENCH MAKE-UP LENGTH

## FEATURES

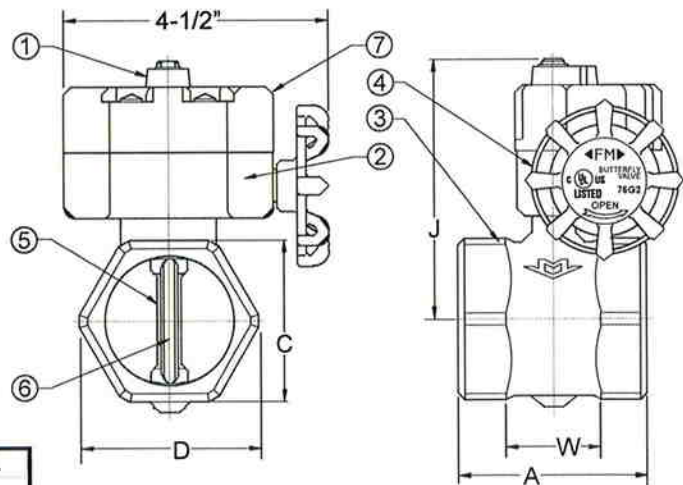
- Slow opening and closing
- Quarter turn operation
- Water Hammer elimination
- Optional internal tamper switch (Indoor/Outdoor use).
  - Signals disc movement
  - Factory or Field installation
  - 10 Amp / 115 VAC-60 Hz
  - 0.5 Amp / 28 VDC
- Grooved Ends Available in Sizes 2" and 2-1/2"

## MATERIALS LIST

ITEM	PART	MATERIALS	ASTM SPEC.
1	Indicator	Iron	F0008P
2	Housing	Bronze	ASTM 584 UNS C8440
3	Body		
4	Handle	Brass	ASTM B176 UNS C85800
5	Disk	Stainless Steel	ASTM A276, Type 304
6	Disk Seal	EPDM	
7	Switch Housing (BB-SCS02)	Aluminum	



**BB-SC100**  
**Sizes 1", 1-1/4", 1-1/2", 2", 2-1/2"**



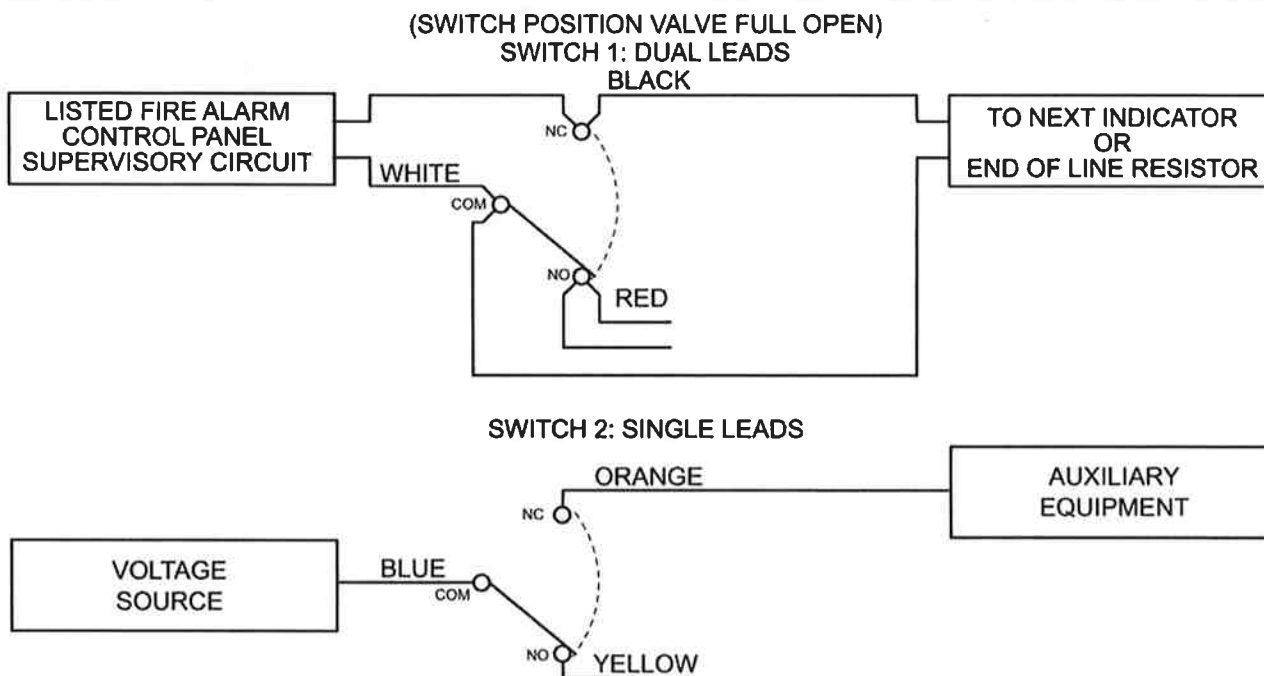
**BB-SCS02**  
**(Includes Switch)**

The information presented on this sheet is correct at the time of publication. Milwaukee Valve reserves the right to change design, and/or material specifications without notice. For the most current information access [www.milwaukeevalve.com](http://www.milwaukeevalve.com)

MILWAUKEE VALVE



## WIRING DIAGRAM



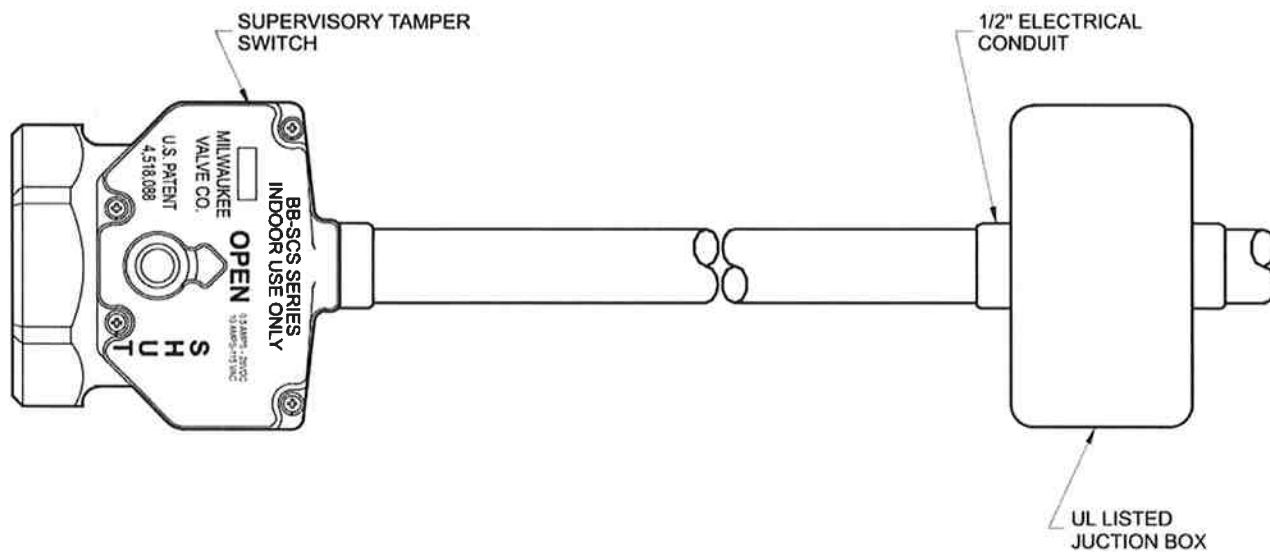
Green Lead provided is ground for switch housing

Switch Rating: 10AMP/ 115 VAC

.5 AMP/28 VDC

Cap unused leads with wire nuts and tuck inside junction box (not provided)

NOTE: Valves incorporating supervisory tamper switches are for **indoor use only**.



**Milwaukee Valve Company**  
2375 South Burrell Street  
Milwaukee, Wisconsin 53207-1592  
Telephone 414/744-5240  
FAX 414/744-5840

