

SPECIFICATION SUBMITTAL

ACCOR™ TECHNOLOGY, INC.

1800 112th Avenue NE Suite 210W
Bellevue, WA 98004

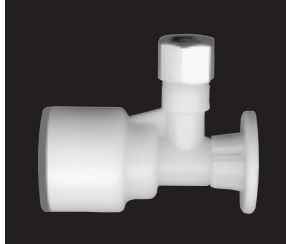
1-800-447-5848

Project _____

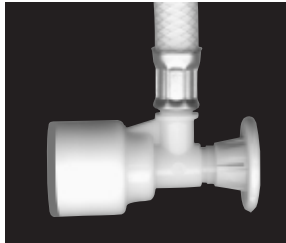
Architect/Engineer _____

Builder/Developer _____

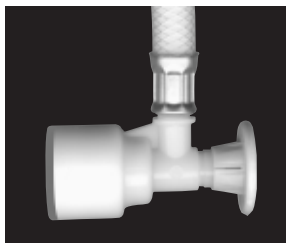
Plumbing Contractor _____



P05-X



P05-LP-X



P05-CP-X

FlowTite™ Angle Stop Valves and Valve/Riser System

for copper, CPVC and PEX pipe

Model Number	Description (All 'X' model valves have gray inlet)
--------------	--

- | | |
|-----------------------------------|---|
| <input type="checkbox"/> P053,2-X | PushON™ Valve 1/2" nom. X 3/8" or 1/4" compression outlet. |
| <input type="checkbox"/> P05-LP-X | PushON Valve with factory applied flexible White High Performance™ connector for faucets and dishwashers. |
| <input type="checkbox"/> P05-CP-X | PushON Valve with factory applied flexible White High Performance connector for toilets. |
| <input type="checkbox"/> P05-IP-X | PushON Valve with factory applied flexible White High Performance connector for ice makers. |

Design Criteria

- | | |
|---|--|
| • Engineered for leak-free performance. | • Eliminates field crimps, tools, copper stub outs, solder and glue. |
| • Superior design margin of safety. | • Valve exceeds 1000 psi hydrostatic test limits on copper and CPVC and 800 psi on PEX pipe. |
| • Long term owner protection. | • Written 10 year labor and material warranty. |
| • Long term field performance. | • FlowTite technology has over 10 years of in place performance on thousands of projects throughout the U.S. |
| • Reduced maintenance costs. | • Valves and one piece units are removable. |
| • Clean white look with stainless steel crimps. | • Non-corrosive no rust look to fit any interior. |
| • NSF 61/9 Listed and labeled. | • Certified lead free and health safe. |

Codes/Standards

Listings:

- NSF 61/9 Listed
- IAPMO Listed File 2657 (UPC)
- BOCA/ESI report 97-54 (IPC)
- SBCCI report 9452B (SPC, IPC)
- Warnock Hersey - CAN
- Other City, County and State approvals

Manufactured in accordance with:

- ANSI/ NSF 61/9 Certified
- ANSI/ ASME A112.18.1M
- CAN/CSA B125
- ASTM F877 (PEX)
- ANSI/ ASME A112.18.6
- PS74-95

Warranty: 10 years including labor (see warranty certificate)