



A KOHLER COMPANY

ENSEMBLE™

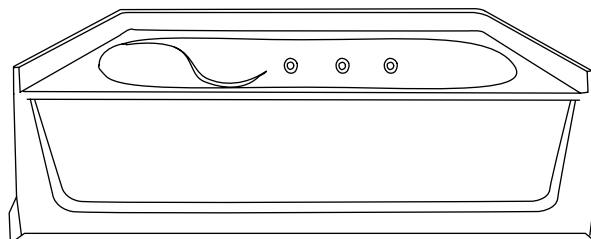
Features

- Compression molded from Sterling's exclusive solid Vikrell® material
- Integral apron with removable access panel
- Durable high gloss finish
- Lightly pebbled bottom surface for sure footing
- 1.25 hp pump with air switch and grounding-type plug-in cord
- 6 Jets
- 10 year consumer/3 year commercial limited warranty, pump motor assembly has 1 year limited warranty
- 60" (152.4 cm) x 37-1/4" (94.6 cm) x 20" (50.8 cm) unit rough-in dimensions include flanges
- 60" (152.4 cm) x 36" (91.4 cm) x 19" (48.3 cm) complete unit finished dimensions include wainscot

36" (91.4 cm) BATH WHIRLPOOL

76101110

ALSO 76101120



Codes/Standards Applicable

Specified model meets or exceeds the following:

- ASME A112.19.7M
- IAPMO/UPC
- ASTM E162
- ASTM E662
- ANSI Z124.1.2
- Underwriters Laboratories (UL)
- HUD, UM Bulletin 73A

Colors/Finishes

- 0: White
- Other: Refer to Price Book for additional colors/finishes

Specified Model

| Model | Description | Colors/Finishes | |
|----------|---|----------------------------|-------------------------------------|
| 76101110 | 36" (91.4 cm) bath whirlpool, left drain | <input type="checkbox"/> 0 | <input type="checkbox"/> Other_____ |
| 76101120 | 36" (91.4 cm) bath whirlpool, right drain | <input type="checkbox"/> 0 | <input type="checkbox"/> Other_____ |

SterlingPlumbing.com

Visit us online for fixture color choices, detailed product information, color photos, installation instructions, care guides, and warranties. Sterling offers additional lines of plumbing products to complement the Sterling product you've chosen. Sign up for the Sterling monthly e-newsletter which showcases our latest product innovations. You may also call our Sterling Plumbing Answer Center from within the USA at 1-888-STERLING in addition to consulting with your local dealer. Sterling. Strong. Professional. Design.

ENSEMBLE™

Technical Information

| Fixture*: | basin area | top area |
|---|--------------------------------|--------------------------------|
| Bathing well | 40" (101.6 cm) x 21" (53.3 cm) | 52" (132.1 cm) x 29" (73.7 cm) |
| To overflow | water depth | capacity |
| | 11" (27.9 cm) | 40 gal (151.4 L) |
| * Approximate measurements for comparison only. | | |

| Pump: | Hp | V | Hz | A |
|---------|------|-----|----|---|
| 1-speed | 1.25 | 120 | 60 | 7 |

Required Electrical Service

| | |
|---|--------------------|
| Dedicated circuit required, protected with Class A Ground-Fault Circuit-Interrupter (GFCI): | |
| Pump | 120 V, 15 A, 60 Hz |

Installation Notes

Install this product according to the installation guide.

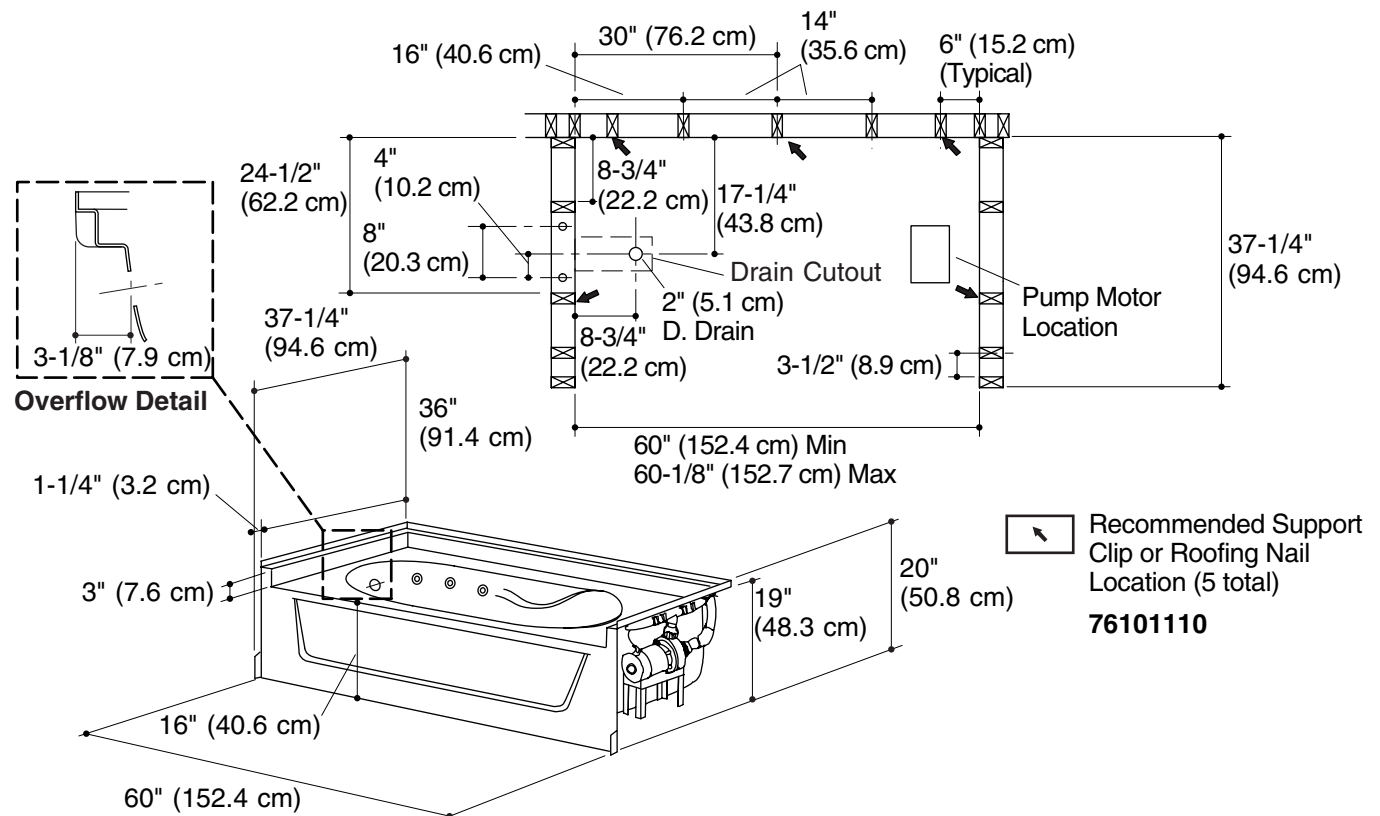
Pump is supplied with a grounding type plug-in cord. Locate the outlet behind the whirlpool, and within 24" (61 cm) of the pump.

Do not disassemble the pump or piping as this could void the warranty.

Size the drain cutout to fit the drain assembly that will be used.

Stud positioning is critical.

Studs should be positioned roughly as shown for support clip or roofing nail installation.



Product Diagram