



## ProFlex® 6040

5' Whirlpool Bath

K-1146-CN



### Features

- End drain.
- Integral lumbar support and armrests for comfort.
- 60" (1524 mm) x 40" (1016 mm) x 17-5/8" (448 mm)

### Material

- Acrylic

### Hydrotherapy

- Single-speed whirlpool offers six fully adjustable hydro-massage jets for water flow and direction.
- Pump with air switch for whirlpool.
- Multiple pump location options give you more choices for installation and access.

### Installation

- Drop-in

### Recommended Accessories

K- 1491 Bath/Whirlpool Pillow  
K- 1601 Bath/Whirlpool Footstop  
K- 9696 Whirlpool 6-Jet Trim Kit  
K- 11677 Bath Drain  
K- 24916 Wireless Music Kit



### Codes/Standards




ASME A112.19.7/CSA B45.10  
CSA B45.5/IAPMO Z124  
UL 1795  
Greenguard UL 2818 - Gold  
CARB P2

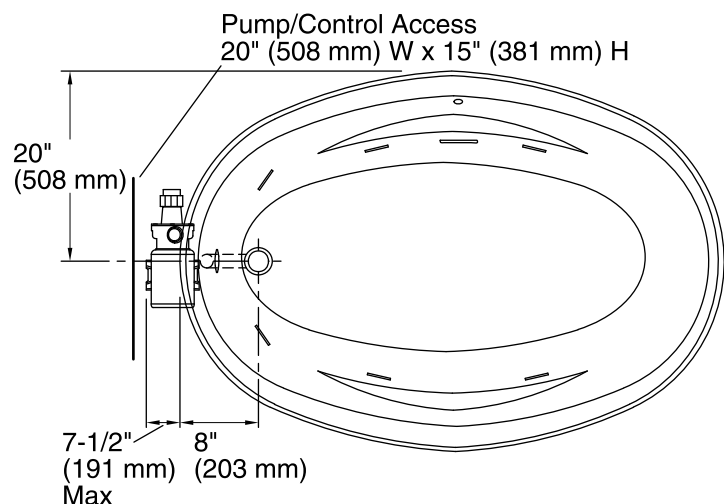
### KOHLER® One-Year Limited Warranty

See website for detailed warranty information.

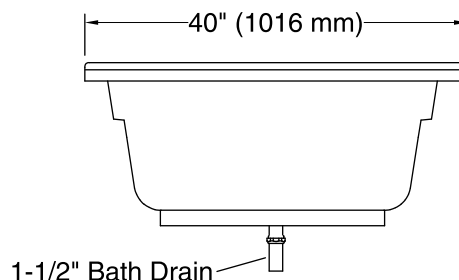
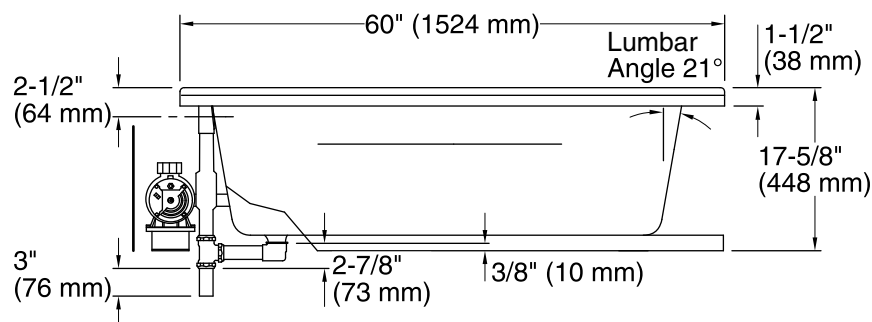
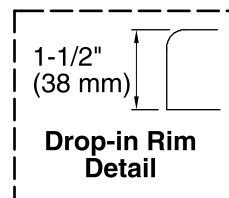
### Available Color/Finishes

*Color tiles intended for reference only.*

Color	Code	Description
	0	White
	96	Biscuit
	47	Almond



No change in measurements if connected with the drain illustrated. (K-11677)



### Required Electrical Service

One dedicated circuit required, protected with Class A Ground-Fault Circuit-Interrupter (GFCI) or Residual Current Device (RCD).

Pump: 120 V, 15 A, 60 Hz

### Technical Information

All product dimensions are nominal.

Installation: Drop-in

Drain location: End

Basin area, bottom: 46" x 19" (1168 mm x 483 mm)

Basin area, top: 55" x 29" (1397 mm x 737 mm)

Weight: 56 lbs (25.4 kg)

Minimum floor load: 32 lbs/ft² (156.2 kg/m²)

Water depth: 14" (356 mm)

Water capacity: 54 gal (204.4 L)

Template: Drop-in, 114859-7, required, included

Electrical component rating: Pump: 120 V, 7.5 A, 60 Hz

Pump speed: Single

Minimum flat for door: 0" (0 mm)

### Notes

Measure your actual product for rough-in details.

Install this product according to the installation instructions.

The hot water supply should be 70% of the capacity of the bath or greater. Installations will vary.

Provide one grounded electrical outlet within 24" (610 mm) of each component.