



# WaterCove® Wading Pool®

## Wading Pool® Above-counter Bathroom Sink

### K-2332

#### Features

- Vitreous china.
- Above-counter.
- Unique shallow basin.
- No faucet holes; requires wall- or counter-mount faucet.
- 18-5/8" (473 mm) x 16-3/16" (411 mm)

#### Required Accessories

K- 7127 Drain

or

K- 7129 Drain

#### Recommended Accessories

K- 9018 P-Trap

14407



ADA

#### Codes/Standards

ASME A112.19.2/CSA B45.1

ADA




ICC/ANSI A117.1

#### KOHLER® One-Year Limited Warranty

See website for detailed warranty information.

#### Available Color/Finishes

*Color tiles intended for reference only.*

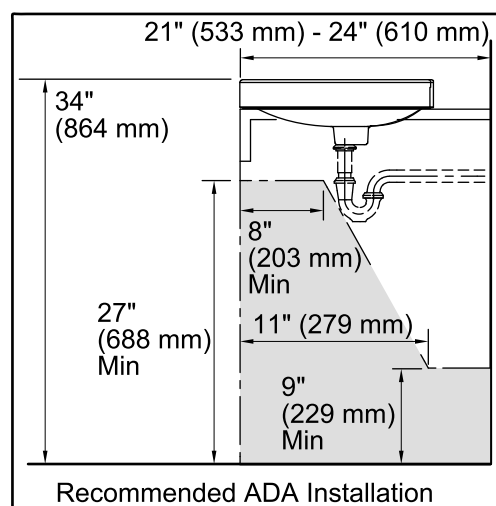
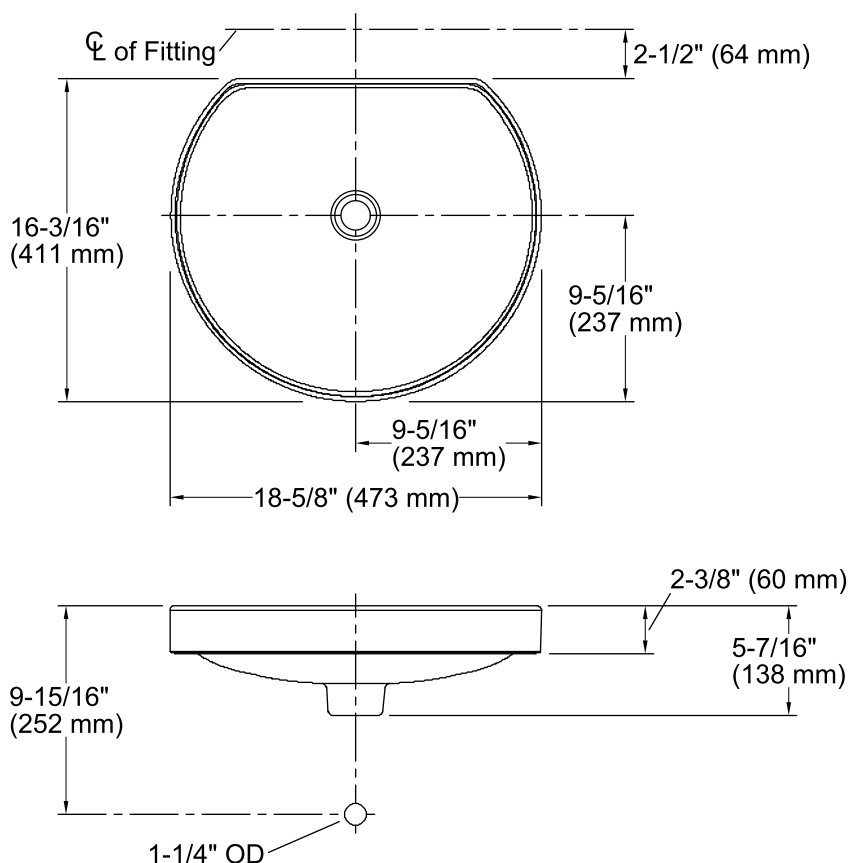
Color	Code	Description
	0	White
	96	Biscuit
	47	Almond



# WaterCove® Wading Pool®

## Wading Pool® Above-counter Bathroom Sink

### K-2332



### Technical Information

All product dimensions are nominal.

Bowl configuration: Single

Installation: Above-counter

Bowl area (Only) Length: 17-11/16" (449 mm)  
Width: 15-5/16" (389 mm)  
Water depth: 3-1/2" (89 mm)

Drain hole: 1-3/4" (44 mm)

Template: Above-counter, 1020955-7, required, included

### Notes

Install this product according to the installation guide.

Product does not have an overflow.

Choose a faucet that will provide adequate clearance and will direct the water stream to the center of the bathroom sink.

**IMPORTANT!** Product rests on a countertop. Consider height of product when planning the installation.

**NOTICE:** Countertop manufacturer or cutter must use the cut-out template provided with the product, or a current cut-out template provided by Kohler (call 1-800-4KOHLER). Kohler is not responsible for cutout errors when incorrect cut-out template is used.

ADA compliant when installed to the specific requirements of these regulations.