

### Features

- High-temperature limit stop allows you to preset a comfortable maximum temperature to eliminate scalding.
- Oil-Rubbed Bronze finish (2BZ) features a different spout design.
- Completes Devonshire design solution with KOHLER fixtures and accessories.
- THIS TRIM HAS BEEN REPLACED BY THE NEW K-TS395-4 TRIM. THE NEW TRIM IS IDENTICAL AND INCLUDES TRIM ADAPTER KITS FOR BOTH RITE-TEMP K-304/K-2971 HIFLOW AND THE NEW K-8304 SERIES VALVE.

### Material

- Premium material construction for durability and reliability.
- KOHLER finishes resist corrosion and tarnishing.

### Technology

- Rite-Temp® pressure-balancing technology maintains water temperature within +/-3 degrees Fahrenheit.

### Required Products/Accessories

K-304/K-P304 Series Rite-Temp® Valves

or

K-2971-KS 3/4" Pressure-balancing Valve

### Recommended Products/Accessories

K-23723 Faucet cleaner

### Optional Products/Accessories

88526 Thin Wall Trim Kit

K-373 Bath Spout Non-diverter with NPT Connection

K-373-S Bath Spout Non-diverter with Slip-fit Connection

K-389 Bath Spout Non-diverter with NPT Connection

K-389-S Bath Spout Diverter Slip-fit Connection

GP1030932 Deep Roughing-In Kit



### Codes/Standards


ASME A112.18.1/CSA B125.1

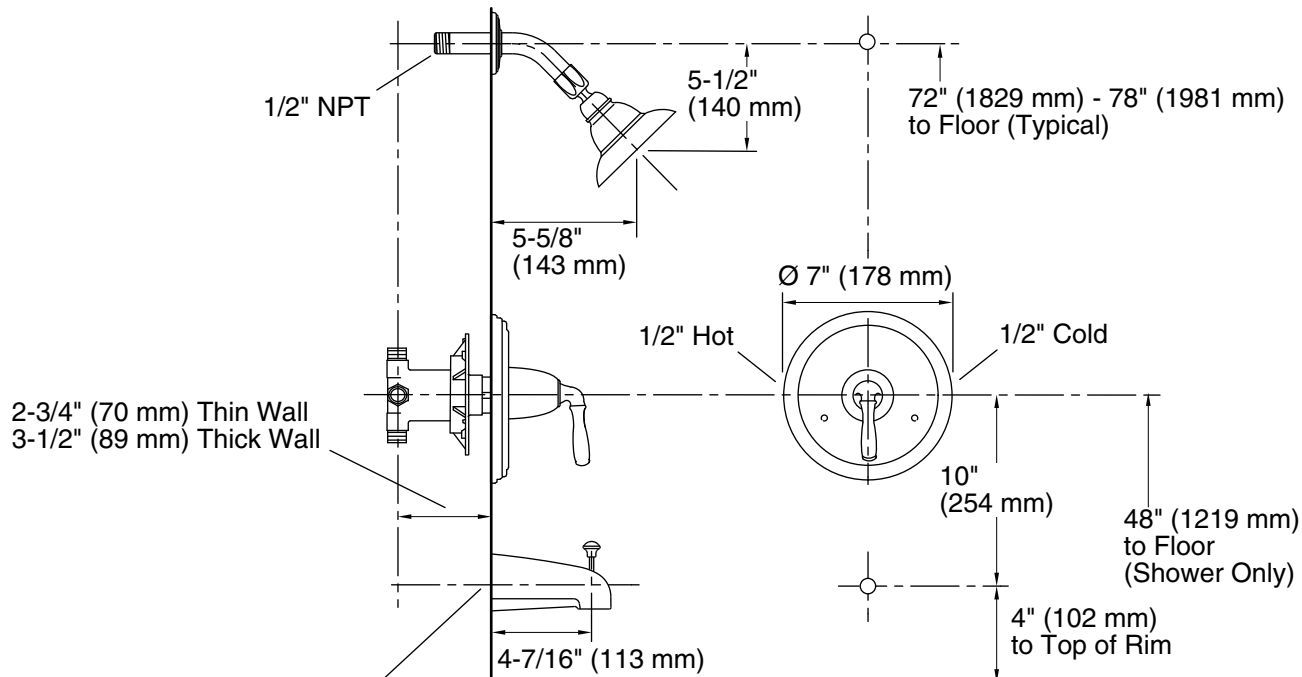
### KOHLER® Faucet Lifetime Limited Warranty

See website for detailed warranty information.

### Available Colors/Finishes

*Color tiles intended for reference only.*

Color	Code	Description
	CP	Polished Chrome
	PB	Vibrant® Polished Brass
	BV	Vibrant® Brushed Bronze
	BRZ	Oil-Rubbed Bronze



For slip-fit spout, 5/8" OD tube must extend 3-1/4" (83 mm) max beyond the finished wall.  
For 1/2" NPT spout, pipe must extend 3-5/8" (92 mm) beyond the finished wall.

Complete bath and shower faucet with Rite-Temp valve and slip-fit diverter spout shown.

### Technical Information

All product dimensions are nominal.

Drain included: No

### Notes

Install this product according to the installation guide.

Install the Rite-Temp valve according to the valve installation guide.

**NOTICE:** Risk of product damage. Long screws, for installing trim, can damage the K-2971-KS valve. Consult the trim installation guide to verify if the thin wall installation kit (88526) is needed.

Cap shower outlet if deck-mounted spout, diverter, or handshower is connected to the spout outlet.

Install straight pipe or tube drop of 7" (178 mm) to 18" (457 mm) with single elbow between valve and wall-mount spout.

Avoid cross-flow conditions. Do not install shut-off device on either valve outlet.